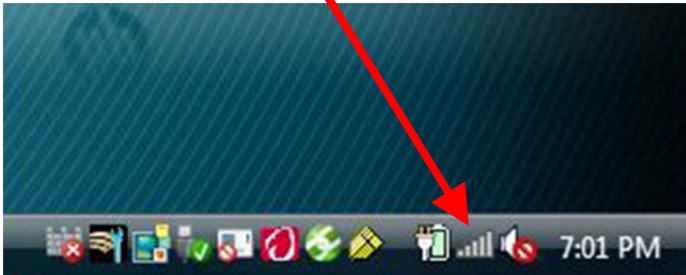


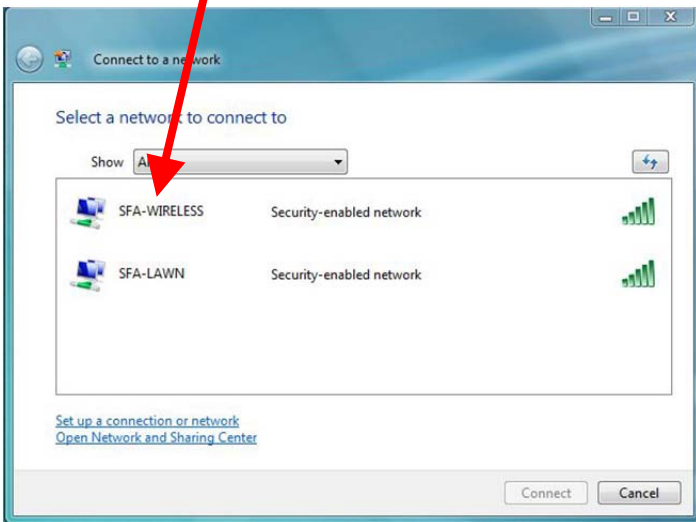
Connecting to the SFA Wireless with Windows Vista

Uses WPA2-PSK

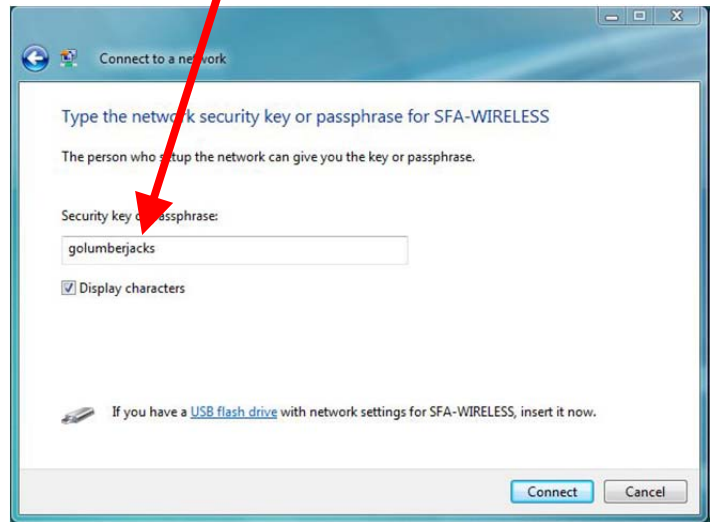
1. Click on the Wireless Icon in the lower-right corner of the screen and select, "Connect to network" or "Choose a wireless network".



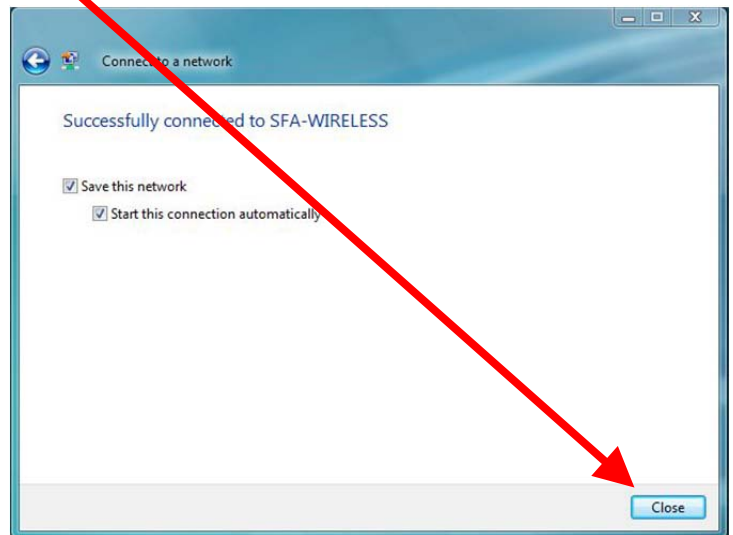
2. Select, "SFA-Wireless".



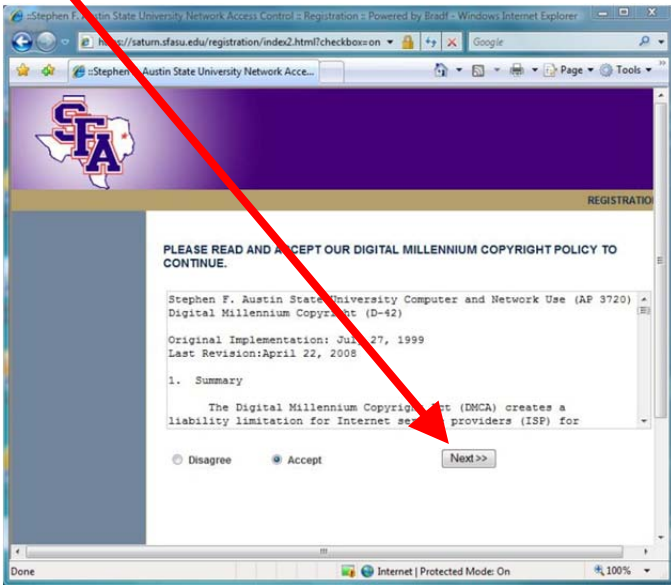
3. Enter the SFA-Wireless WEP Key, which is, "golumberjacks" (13 Characters, all lower-case, no spaces).



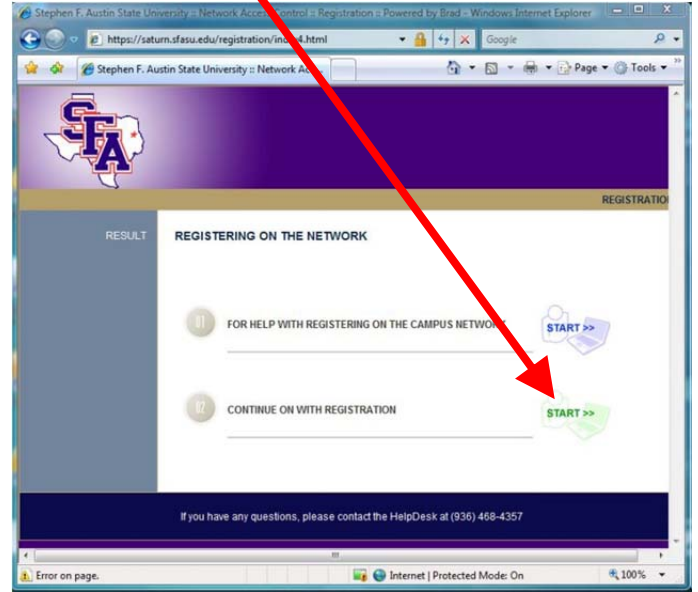
4. Once connected, check "Save this network" and "Start this connection automatically". Then click, "Close".



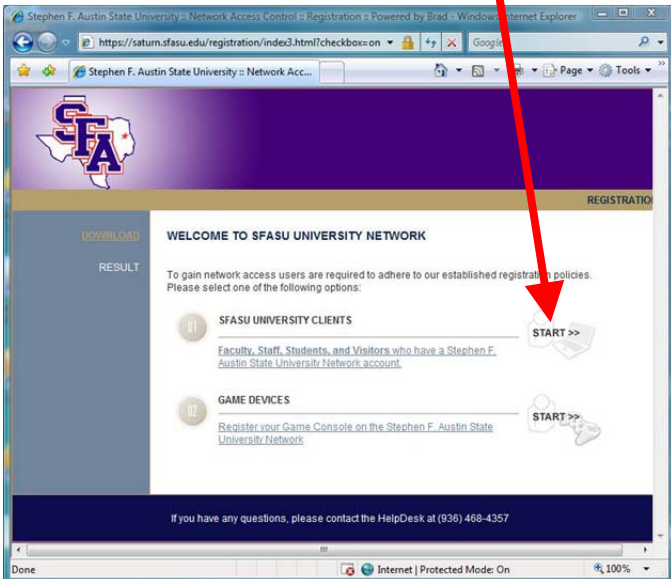
5. Open a Web Browser and you should automatically connect to the SFA Registration System. Accept the SFA Network Acceptable use policy, click, "Next" and then accept the Digital Millennium Copyright Policy and click, "Next".



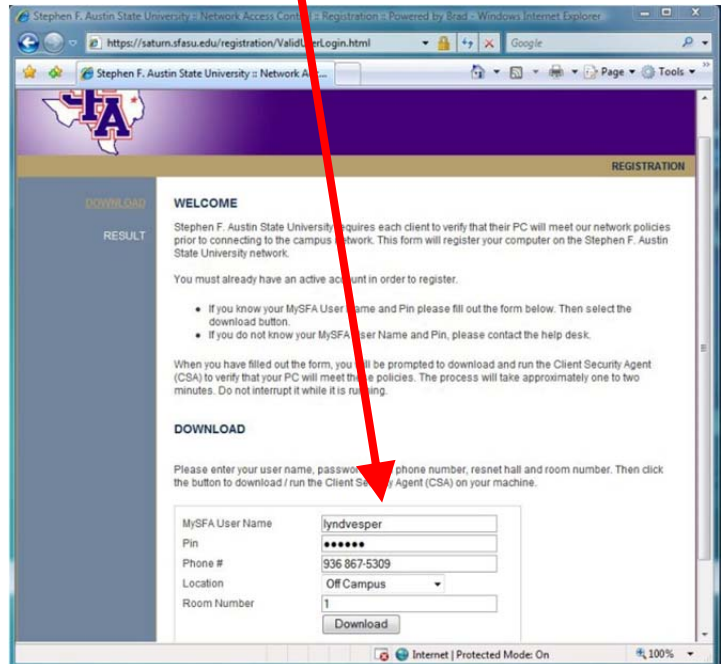
7. Click on, "START" next to, "Continue on with registration".



6. Click on, "START" next to, "SFASU University Clients".



8(a). Fill out Registration Information.



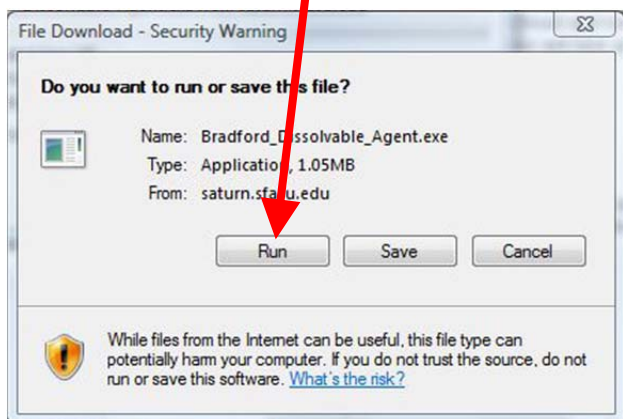
8(b). Use your MySFA Username and password to authenticate. For phone use any number that can be used to contact you. For location, select the on-campus building that you live or work in or select, "Off Campus". If you do not have a Room Number, just enter, "1".

If you are a guest of the university, you will need to get your username and password from your Event Sponsor. Once you have entered the information, click on the "Download" button.

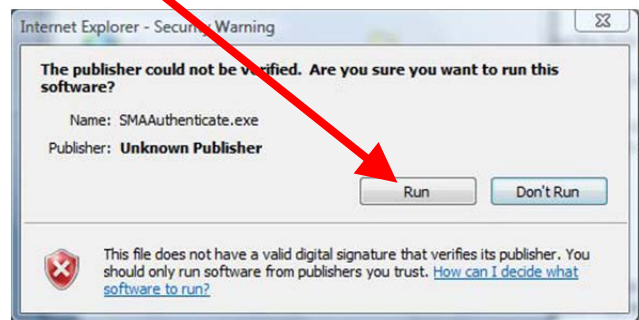
NOTE: You will now be asked to download and run a .exe file. Different web browsers will handle this file differently. This file will not make any changes to your system. It will simply report the MAC address of your system to the server.

MySFA User Name	<input type="text" value="lyndvesper"/>
Pin	<input type="password" value="•••••"/>
Phone #	<input type="text" value="936 867-5309"/>
Location	<input type="text" value="Off Campus"/>
Room Number	<input type="text" value="1"/>
	<input type="button" value="Download"/>

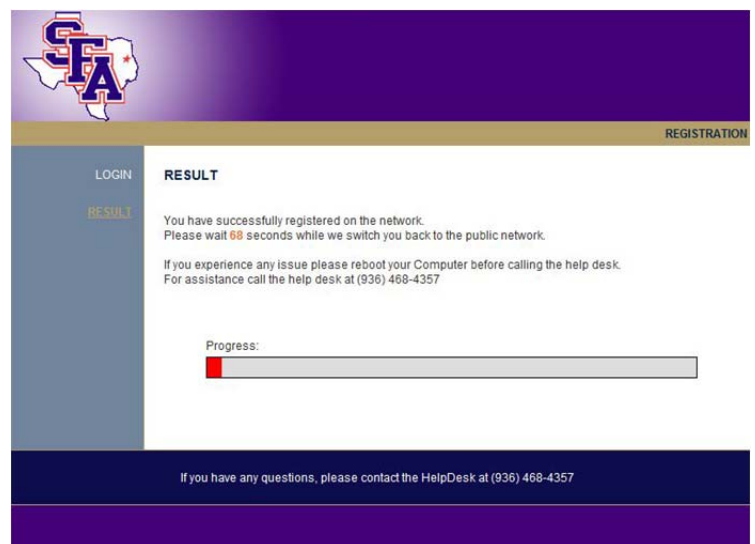
9. If asked, choose to run the file Bradford_Dissolvable_Agent.exe. (NOTE: You can also download and then run the file).



10. If warned that the publisher could not be verified, select, "Run".



11. The registration process takes just over one minute. Once complete, you will be connected to the internet.



12. When asked, it is recommended that you select, "Public Location".

Select a location for the 'SFA-WIRELESS 2' network

Windows will automatically apply the correct network settings for the location.



Home

Choose this for a home or similar location. Your computer is discoverable and you can see other computers and devices.



Work

Choose this for a workplace or similar location. Your computer is discoverable and you can see other computers and devices.



Public location

Choose this for airports, coffee shops, and other public places or if you are directly connected to the Internet. Discovery of other computers and devices is limited.