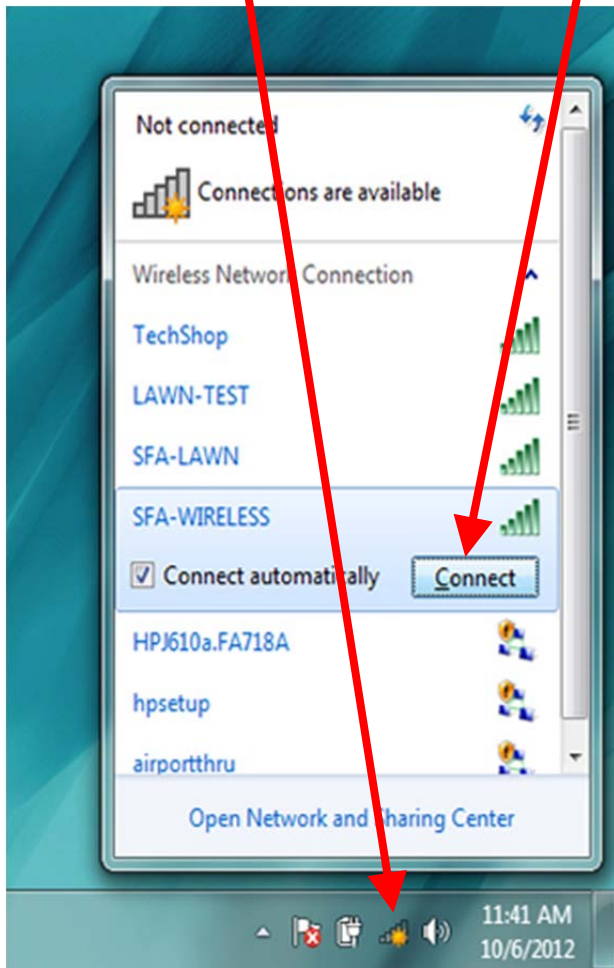


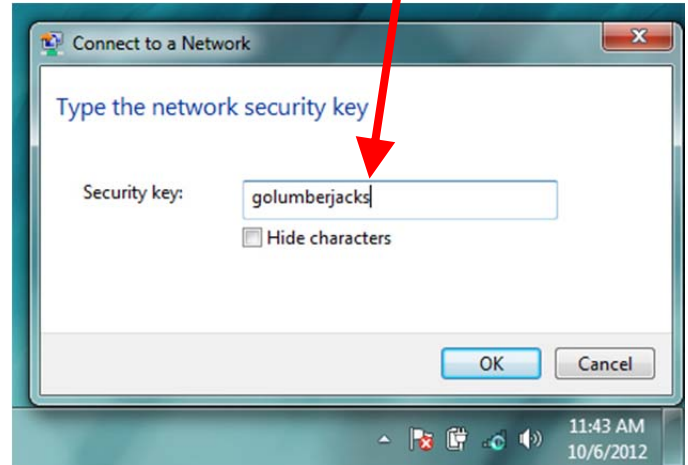
Connecting to the SFA Wireless with Windows 7

Uses WPA2-PSK

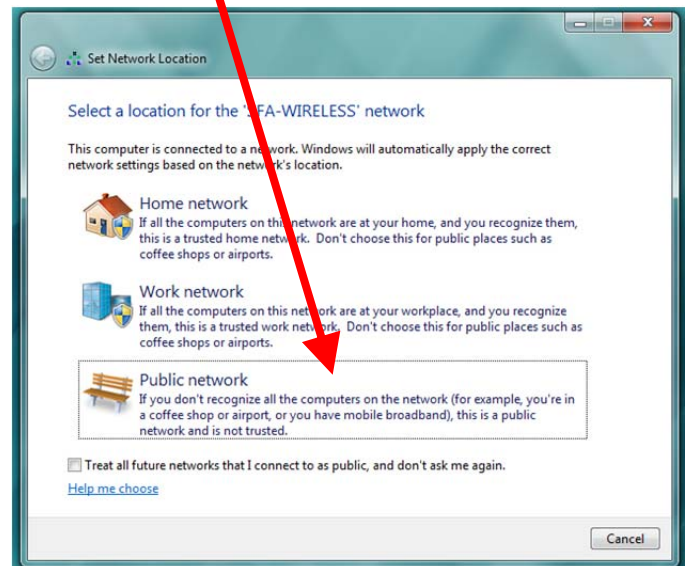
1. Click on the Wireless Icon in the lower-right corner of the screen and select the "SFA-WIRELESS" network from the list of available networks. Click the "Connect" button.



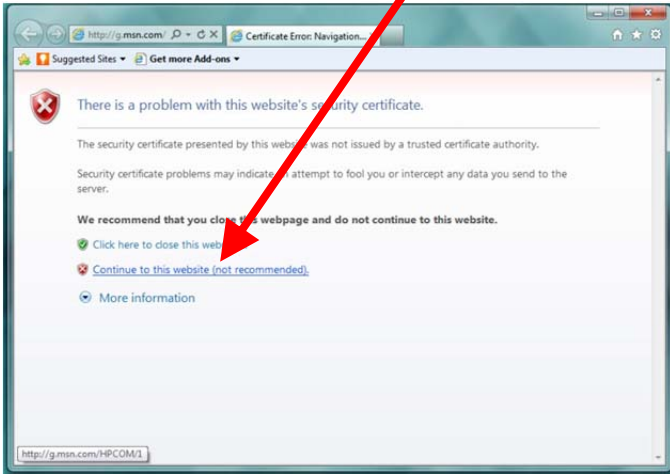
2. Enter the SFA-Wireless network security key, which is, "golumberjacks" (13 Characters, all lower-case, no spaces). Click "OK".



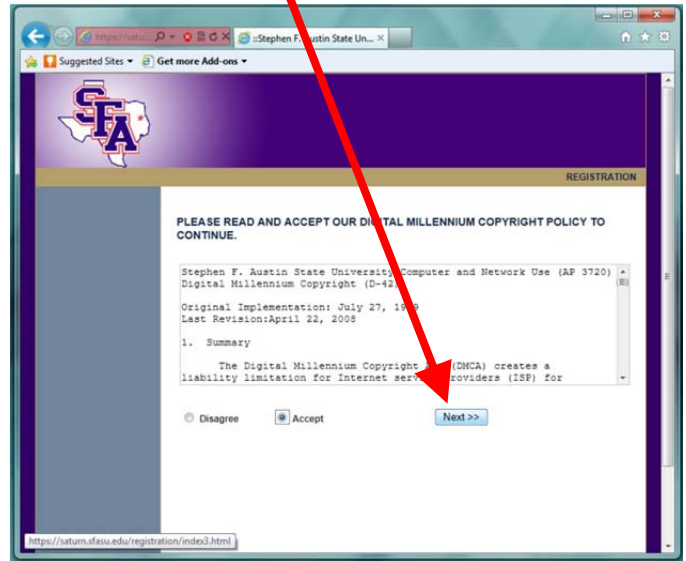
3. Windows may ask you to select a network location. Choose "Public Network".



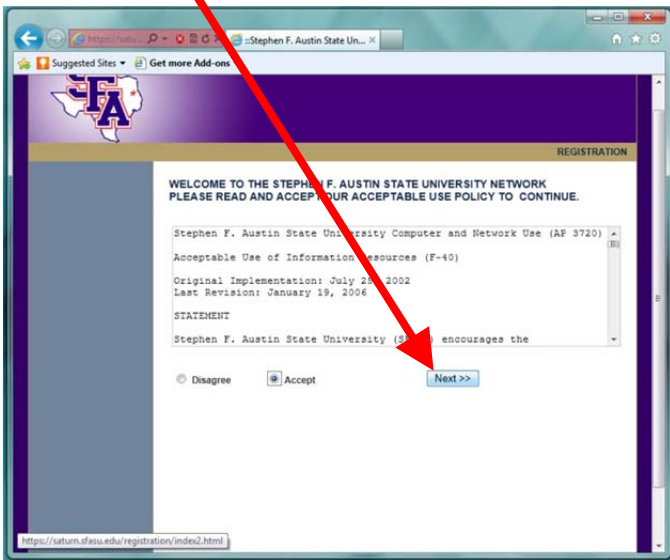
4. Open a Web Browser (In this document we used Internet Explorer 9) and you should automatically connect to the SFA Registration System. The browser may raise an alert at the SFA Security Certificate. Go ahead and accept the certificate.



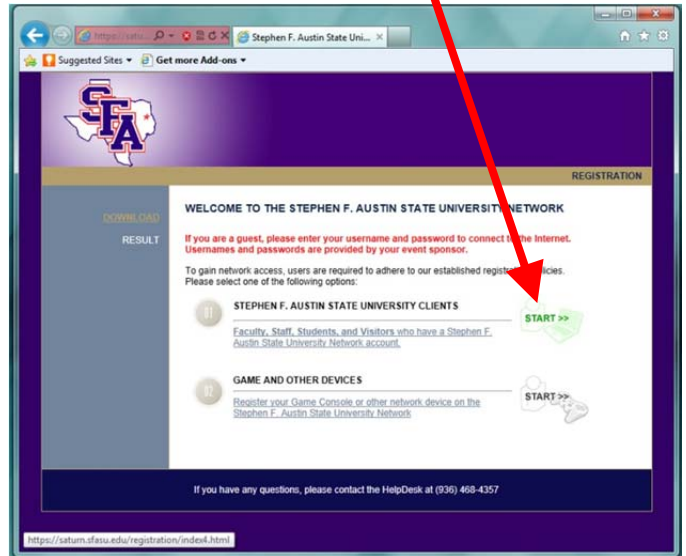
6. Accept the Digital Millennium Copyright Policy and click, "Next".



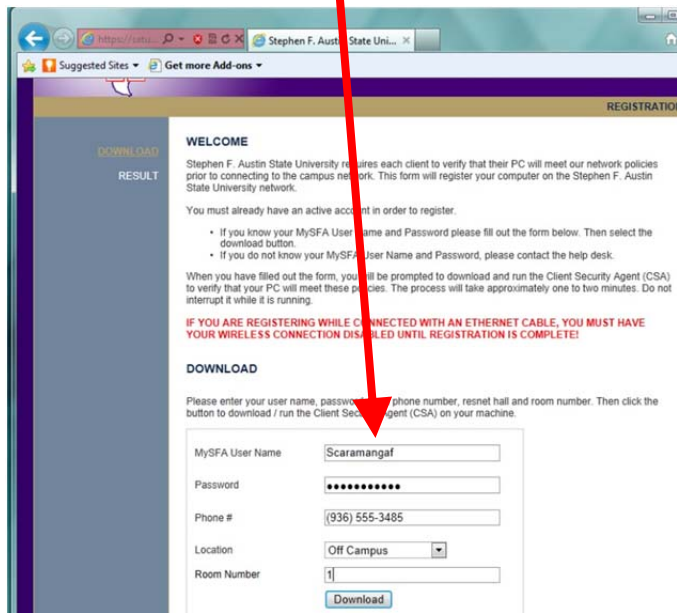
5. Accept the SFA Network Acceptable use policy, click, "Next".



7. Click on the "Start" icon to the right of, "Stephen F. Austin State University Clients".



8(a). Fill out your Registration Information (MySFA username and password).

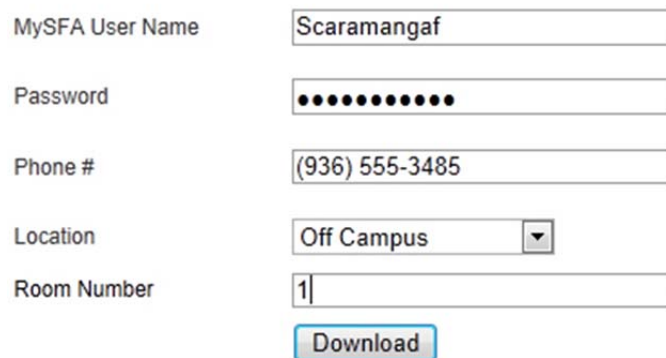


The screenshot shows a web browser window with the URL <https://my.sfasu.edu>. The page is titled "REGISTRATION" and has a "WELCOME" message. It contains a registration form with the following fields: MySFA User Name (Scaramangaf), Password (masked with dots), Phone # ((936) 555-3485), Location (Off Campus), and Room Number (1). A "Download" button is at the bottom of the form. A red arrow points to this button.

8(b). Use your MySFA Username and password to authenticate. For phone use any number that can be used to contact you. For location, select the on-campus building that you live or work in or select, "Off Campus". If you do not have a Room Number, just enter, "1".

If you are a guest of the university, you will need to get your username and password from your Event Sponsor. Once you have entered the information, click on the "Download" button.

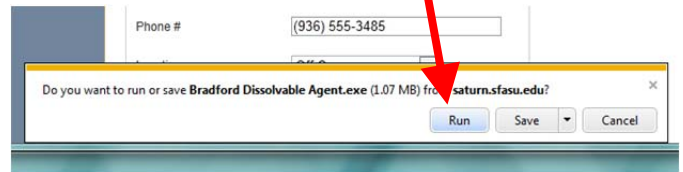
NOTE: You will now be asked to download and run a .exe file. Different web browsers will handle this file differently. This file will not make any changes to your system. It will simply report the MAC address of your system to the server.



A close-up of the registration form fields:

- MySFA User Name: Scaramangaf
- Password: Masked with dots
- Phone #: (936) 555-3485
- Location: Off Campus (dropdown menu)
- Room Number: 1
- Download button

9. If asked, choose to run the file Bradford_Dissolvable_Agent.exe. (NOTE: You can also download and then run the file).



10. Once the file has run, it will take approximately 70 seconds for you to be connected to the internet.

RESULT

You have successfully registered on the network.
Please wait 62 seconds while we switch you back to the public network.

If you experience any issue please reboot your Computer before calling the help desk.
For assistance call the help desk at (936) 468-4357

Progress:

