



Degrees Data

Table of Contents

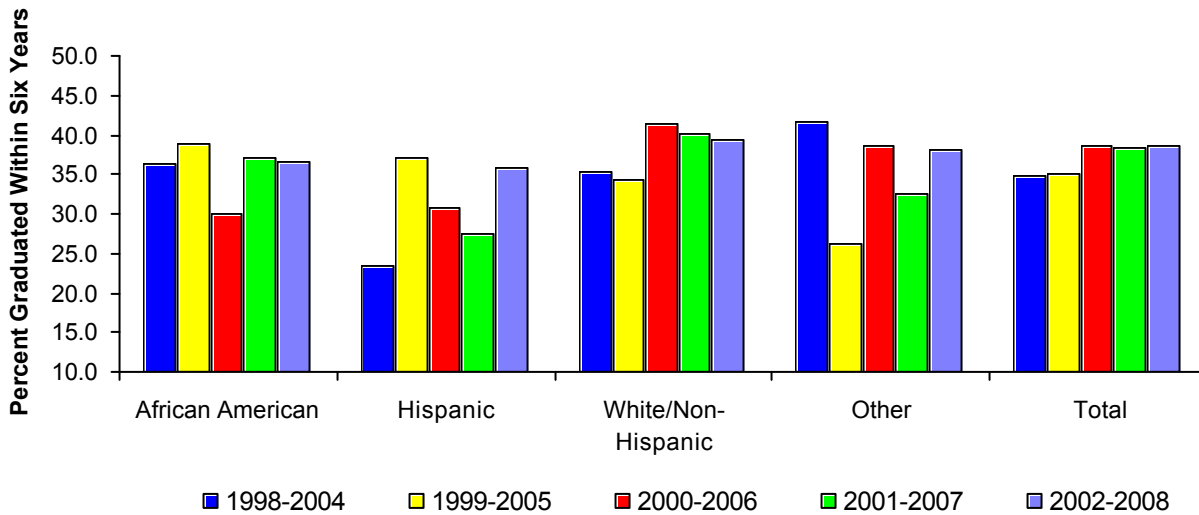
Six-Year Graduation Rates.....	68
Degrees Awarded by Ethnicity and Level.....	69
Top 10 Undergraduate Degrees Awarded.....	69
Degrees Awarded by College and Level.....	70
Degrees Awarded by College - Charts by Level.....	71
Total Degrees Awarded by Major.....	72
Bachelor Degrees Awarded by Major.....	77
Master Degrees Awarded by Major.....	82
Doctoral Degrees Awarded by Major.....	87
Undergraduate Degrees Awarded - Second Majors.....	88



Stephen F. Austin State University

Six-Year Graduation Rates First-time Full-time Freshmen 2004-2008

Ethnicity	Percent Graduating Within Six Years				
	1998-2004	1999-2005	2000-2006	2001-2007	2002-2008
Overall SFA Grad. Rate	34.7	35.1	38.6	38.4	38.5
African American	36.4	38.8	29.9	37.2	36.6
Hispanic	23.3	37.2	30.8	27.5	35.9
White/Non-Hispanic	35.2	34.3	41.4	40.1	39.3
Other	41.7	26.3	38.5	32.5	38.1



Notes: Other = American Indian, Asian/Pacific Islander and non-resident aliens
 Values are calculated and reported in accordance with LBB definitions and IPEDS (includes first-time freshmen from previous summer).



Degrees Awarded by Ethnicity and Level Academic Year 2008

Ethnicity	Bachelor's			Master's			Doctoral			Grand Total		
	M	F	Total	M	F	Total	M	F	Total	M	F	Total
SFA Total	676	1,136	1,812	134	311	445	4	13	17	814	1,460	2,274
African American	79	156	235	13	38	51	0	2	2	92	196	288
American Indian	5	3	8	0	3	3	0	0	0	5	6	11
Asian/Pacific Islander	7	11	18	1	3	4	0	0	0	8	14	22
Hispanic	52	96	148	7	13	20	0	0	0	59	109	168
White/Non-Hispanic	528	861	1,389	103	239	342	4	11	15	635	1,111	1,746
Foreign	5	9	14	10	15	25	0	0	0	15	24	39

Top 10 Undergraduate Degrees Awarded Headcount and Percentage Academic Year 2008

Degree	College	Headcount	Percent of College UG Degrees Awarded	Percent of Total UG Degrees Awarded
Interdisciplinary Studies - Elem. Ed.	Education	276	45.8	15.2
Kinesiology	Education	107	17.7	5.9
Nursing	Sciences / Mathematics	89	44.9	4.9
General Business	Business	76	24.8	4.2
Psychology	Liberal / Applied Arts	74	15.6	4.1
Biology	Sciences / Mathematics	72	36.4	4.0
Management	Business	65	21.2	3.6
Art	Fine Arts	58	39.5	3.2
Music	Fine Arts	52	35.4	2.9
Applied Arts & Sciences	Liberal / Applied Arts	51	10.7	2.8
Total For Top 10 Undergraduate Degrees		920		50.8

Note: Fiscal year includes December, May and August graduates.



Stephen F. Austin State University

Degrees Awarded by College and Level Headcount and Percentage of Total Academic Years 2004 - 2008

	2003-04	2004-05	2005-06	2006-07	2007-08		5-year Change	
	N	N	N	N	N	%	N	%
SFA Total	2,165	2,271	2,165	2,207	2,274	100.0	109	5.0
Bachelor	1,717	1,785	1,700	1,734	1,812	79.7	95	5.5
Master	437	474	449	457	445	19.6	8	1.8
Doctoral	11	12	16	16	17	0.7	6	54.5

Total by College

College	2003-04	2004-05	2005-06	2006-07	2007-08		5-year Change	
	N	N	N	N	N	%	N	%
Business	409	374	362	352	351	15.4	-58	-14.2
Education	724	798	783	852	812	35.7	88	12.2
Fine Arts	110	150	132	118	171	7.5	61	55.5
Forestry / Agriculture	127	144	107	114	120	5.3	-7	-5.5
Liberal / Applied Arts	563	578	526	568	582	25.6	19	3.4
Sciences / Mathematics	232	227	255	203	238	10.5	6	2.6

Bachelor's Degree by College

College	2003-04	2004-05	2005-06	2006-07	2007-08		5-year Change	
	N	N	N	N	N	%	N	%
Business	365	311	325	307	306	13.5	-59	-16.2
Education	478	559	583	598	603	26.5	125	26.2
Fine Arts	89	125	101	102	147	6.5	58	65.2
Forestry / Agriculture	99	117	71	76	83	3.6	-16	-16.2
Liberal / Applied Arts	498	491	444	480	475	20.9	-23	-4.6
Sciences / Mathematics	188	182	176	171	198	8.7	10	5.3

Master's Degree by College

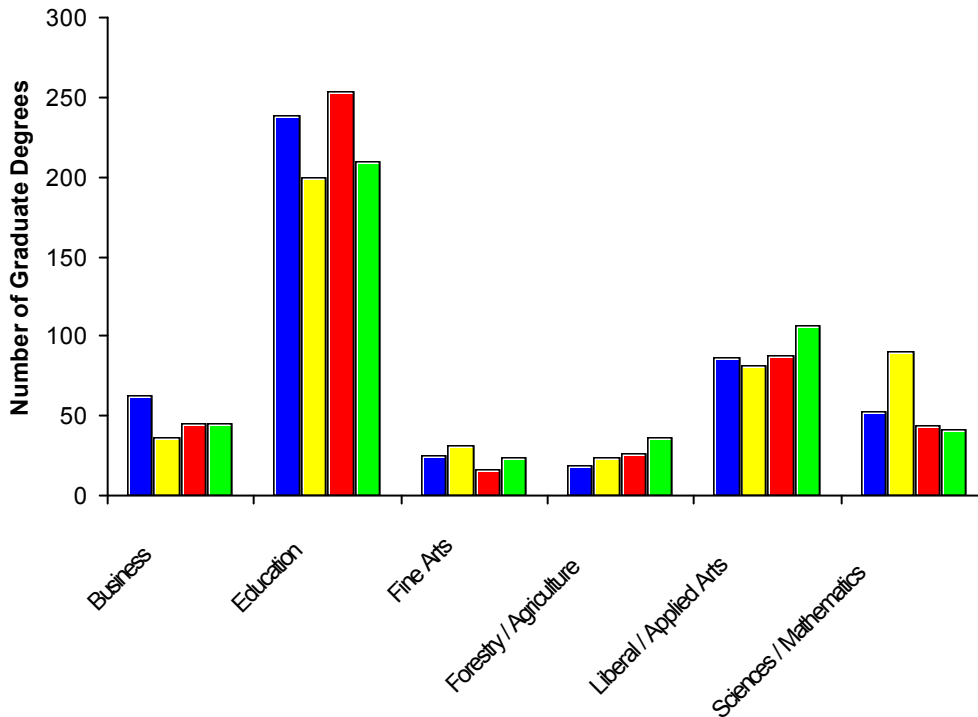
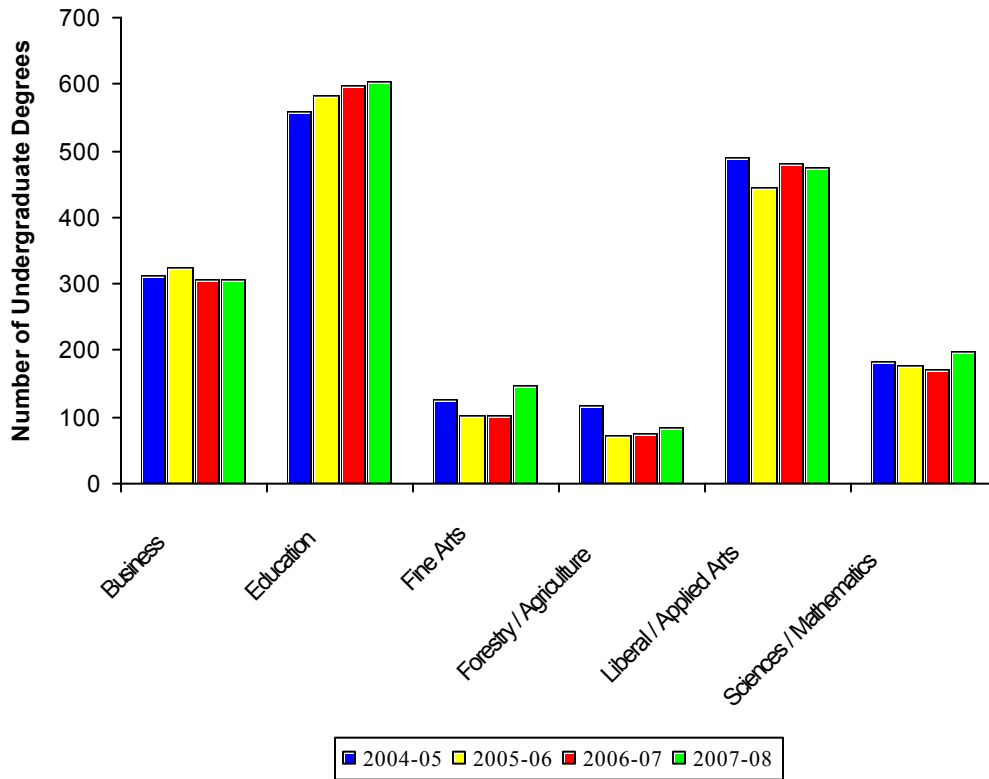
College	2003-04	2004-05	2005-06	2006-07	2007-08		5-year Change	
	N	N	N	N	N	%	N	%
Business	44	63	37	45	45	2.0	1	2.3
Education	235	229	187	238	193	8.5	-42	-17.9
Fine Arts	21	25	31	16	24	1.1	3	14.3
Forestry / Agriculture	28	25	33	38	36	1.6	8	28.6
Liberal / Applied Arts	65	87	82	88	107	4.7	42	64.6
Sciences / Mathematics	44	45	79	32	40	1.8	-4	-9.1

Doctoral Degrees by College

College	2003-04	2004-05	2005-06	2006-07	2007-08		5-year Change	
	N	N	N	N	N	%	N	%
Education	11	10	13	16	16	0.0	5	45.5
Forestry / Agriculture	0	2	3	0	1	0.0	1	-



Degrees Awarded by College - Charts by Level
Academic Years 2005 - 2008





Stephen F. Austin State University

Total Degrees Awarded by Major Academic Years 2004 - 2008

COLLEGE / Unit / Major	Academic Year					5-year Change	
	2003-04	2004-05	2005-06	2006-07	2007-08	N	%
SFA TOTALS	2,165	2,271	2,165	2,207	2,274	109	5.0
BUSINESS	409	374	362	352	351	-58	-14.2
Accounting	59	79	61	69	80	21	35.6
Accounting	29	29	21	29	30	1	3.4
Professional Accountancy	30	50	40	40	50	20	66.7
Computer Science	16	26	12	12	15	-1	-6.3
Computer Information Systems	5	7	2	7	2	-3	-60.0
Computer Science	11	19	10	5	13	2	18.2
Economics / Finance	44	37	34	38	43	-1	-2.3
Business Economics	6	3	1	1	7	1	16.7
Economics	1	1	1	2	3	2	100.0
Finance	37	33	32	35	33	-4	-10.8
General Business	124	99	105	98	87	-37	-29.8
General Business	122	97	104	98	87	-35	-28.7
Office Systems	2	2	1	0	0	-2	-100.0
Management / Marketing / Int. Bus.	166	133	150	135	126	-40	-24.1
International Business	25	15	15	18	13	-12	-48.0
Management	60	60	72	57	66	6	10.0
Marketing	81	58	63	60	47	-34	-42.0



Total Degrees Awarded by Major
Academic Years 2004 - 2008
(Continued)

COLLEGE / Unit / Major	Academic Year					5-year Change	
	2003-04	2004-05	2005-06	2006-07	2007-08	N	%
EDUCATION	724	798	783	852	812	88	12.2
<i>Elementary Education</i>	212	247	273	290	298	86	40.6
Early Childhood Education	1	4	2	1	6	5	500.0
Elementary Education	5	12	17	13	16	11	220.0
Interdisciplinary Studies	206	231	254	276	276	70	34.0
<i>Human Sciences</i>	104	157	132	153	134	30	28.8
Child Development / Family Living	21	28	26	32	19	-2	-9.5
Family / Consumer Sciences	10	19	16	22	18	8	80.0
Fashion Merchandising	21	23	20	28	26	5	23.8
Food / Nutrition / Dietetics	9	11	9	7	16	7	77.8
Hospitality Administration	25	54	20	32	38	13	52.0
Interior Design	18	22	41	25	12	-6	-33.3
Interior Merchandising	0	0	0	7	5	5	-
<i>Human Services</i>	104	114	105	118	94	-10	-9.6
Counseling - Community	6	10	12	6	8	2	33.3
Counseling - Rehabilitation	2	5	7	4	2	0	0.0
Counseling - School	8	15	3	11	5	-3	-37.5
Communication Disorders*	24	26	23	26	36	12	50.0
Deaf & Hard of Hearing**	12	2	8	14	6	-6	-50.0
Orientation / Mobility	3	5	6	4	3	0	0.0
Rehabilitation Services	10	6	4	7	6	-4	-40.0
School Psychology	1	0	1	1	2	1	100.0
Special Education	26	28	27	28	11	-15	-57.7
Speech Language Pathology	12	17	14	17	15	3	25.0
<i>Kinesiology / Health Science</i>	133	146	174	152	171	38	28.6
Athletic Training	0	0	4	9	8	8	-
Dance	3	5	5	3	6	3	100.0
Health Science	15	25	39	39	43	28	186.7
Kinesiology	108	108	116	92	114	6	5.6
Physical Education	7	8	10	9	0	-7	-100.0
<i>Secondary Education</i>	171	134	99	139	115	-56	-32.7
Educational Leadership	153	125	90	132	105	-48	-31.4
Secondary Education (General)	18	9	9	7	10	-8	-44.4

* Formerly Speech/Hearing Therapy, ** Formerly Hearing Impaired



Stephen F. Austin State University

Total Degrees Awarded by Major Academic Years 2004 - 2008 (Continued)

COLLEGE / Unit / Major	Academic Year					5-year Change	
	2003-04	2004-05	2005-06	2006-07	2007-08	N	%
FINE ARTS	110	150	132	118	171	61	55.5
<i>Art</i>	42	69	76	48	72	30	71.4
Art	42	67	74	44	70	28	66.7
Art History	0	2	2	4	2	2	-
<i>Music</i>	40	51	34	43	64	24	60.0
Music	31	37	22	35	55	24	77.4
Music Conducting	2	3	2	1	1	-1	-50.0
Music Education	1	1	1	2	3	2	200.0
Music Performance	6	10	9	5	5	-1	-16.7
Music - Piano Pedagogy	0	0	0	0	0	0	0.0
<i>Theatre</i>	28	30	22	27	35	7	25.0
FORESTRY / AGRICULTURE	127	144	107	114	120	-7	-5.5
<i>Agriculture</i>	69	78	53	55	48	-21	-30.4
Agribusiness	10	13	7	6	5	-5	-50.0
Agriculture Development	2	5	6	4	2	0	0.0
Agriculture Develop. Production	6	13	5	5	6	0	0.0
Agriculture Machinery	1	6	2	5	3	2	200.0
Agronomy	4	1	0	0	0	-4	-100.0
Animal Science	19	13	12	10	12	-7	-36.8
General Agriculture	11	16	10	15	8	-3	-27.3
Horticulture	12	7	5	4	5	-7	-58.3
Poultry Science	4	4	6	6	7	3	75.0
<i>Environmental Science</i>	30	19	21	16	17	-13	-43.3
<i>Forestry</i>	28	47	33	43	55	27	96.4
Forestry	13	21	15	11	12	-1	-7.7
Forest Management	3	8	3	4	6	3	100.0
Forestry Range Management	1	1	1	0	0	-1	100.0
Forest Recreation Management	2	3	1	2	3	1	50.0
Forest Wildlife Management	9	12	5	16	14	5	55.6
Resource Interpretation	0	1	7	8	19	19	-
Spatial Science	0	1	1	2	1	1	-



Total Degrees Awarded by Major
Academic Years 2004 - 2008
(Continued)

COLLEGE / Unit / Major	Academic Year					5-year Change	
	2003-04	2004-05	2005-06	2006-07	2007-08	N	%
LIBERAL / APPLIED ARTS	563	578	526	568	582	19	3.4
Humanities	3	10	6	0	0	-3	-100.0
Applied Arts / Sciences	66	64	64	68	61	-5	-7.6
Applied Arts / Sciences	55	60	58	58	51	-4	-7.3
Interdisciplinary Studies	11	4	6	10	10	-1	-9.1
Communication	157	163	125	137	114	-43	-27.4
Communication	12	16	10	11	10	-2	-16.7
General Communication	0	0	0	0	0	0	-
Journalism	59	67	49	67	41	-18	-30.5
Radio / TV	45	37	37	32	43	-2	-4.4
Speech Communication	41	43	29	27	20	-21	-51.2
Criminal Justice	48	49	54	65	54	6	12.5
Corrections	6	16	8	13	8	2	33.3
Law Enforcement	31	27	37	44	36	5	16.1
Legal Assistant	11	6	9	8	10	-1	-9.1
English / Philosophy	49	52	50	42	56	7	14.3
English	49	52	50	41	49	0	0.0
Creative Writing	0	0	0	1	5	5	-
Philosophy	0	0	0	0	2	2	-
History	33	22	28	38	37	4	12.1
Modern Languages	6	13	9	8	9	3	50.0
French	2	0	3	1	0	-2	-100.0
Spanish	4	13	6	7	9	5	125.0
Pol. Sci. / Geog. / Public Adm.	49	45	44	53	52	3	6.1
Geography	12	6	7	0	6	-6	-50.0
Liberal Studies	0	0	5	14	10	10	-
Political Science	30	27	22	26	26	-4	-13.3
Public Administration	7	12	10	13	10	3	42.9
Psychology	65	77	63	76	90	25	38.5
Social Work	66	63	69	65	93	27	40.9
Sociology	21	20	14	16	16	-5	-23.8
Gerontology	3	2	0	3	2	-1	-33.3
Sociology	18	18	14	13	14	-4	-22.2



Stephen F. Austin State University

Total Degrees Awarded by Major
Academic Years 2004 -2008
(Continued)

COLLEGE / Unit / Major	Academic Year					5-year Change	
	2003-04	2004-05	2005-06	2006-07	2007-08	N	%
SCIENCES / MATHEMATICS	232	227	255	203	238	6	2.6
Natural Science	1	0	0	0	1	0	0.0
Biology	103	86	74	66	80	-23	-22.3
Biotechnology	9	4	6	12	13	4	44.4
Chemistry	11	4	4	8	3	-8	-72.7
Biochemistry	0	0	0	0	1	1	-
Chemistry	11	4	4	8	2	-7	-78
Geology	7	13	12	11	15	8	114.3
Mathematics / Statistics	29	35	68	20	23	-6	-20.7
Mathematics	17	13	20	16	11	-6	-35.3
Mathematics Teaching	10	22	46	1	10	0	0.0
Statistics	2	0	2	3	2	0	0.0
Nursing	60	72	80	77	89	29	48.3
Physics / Astronomy	12	13	11	9	14	2	16.7
Physics	12	13	11	9	14	2	16.7



Bachelor Degrees Awarded by Major Academic Years 2004 - 2008

COLLEGE / Unit / Major	Academic Year					5-year Change	
	2003-04	2004-05	2005-06	2006-07	2007-08	N	%
SFA TOTALS	1,717	1,785	1,700	1,734	1,812	95	5.5
BUSINESS	365	311	325	307	306	-59	-16.2
Accounting	43	47	39	47	49	6	14.0
Accounting	28	22	19	27	24	-4	-14.3
Professional Accountancy	15	25	20	20	25	10	66.7
Computer Science	14	21	10	11	13	-1	-7.1
Computer Information Systems	5	7	2	7	2	-3	-60.0
Computer Science	9	14	8	4	11	2	22.2
Economics / Finance	44	37	34	38	43	-1	-2.3
Business Economics	6	3	1	1	7	1	16.7
Economics	1	1	1	2	3	2	200.0
Finance	37	33	32	35	33	-4	-10.8
General Business	102	73	93	78	76	-26	-25.5
General Business	100	71	92	78	76	-24	-24.0
Office Systems	2	2	1	0	0	-2	-100.0
Management / Marketing / Int. Bus.	162	133	149	133	125	-37	-22.8
International Business	25	15	15	18	13	-12	-48.0
Management	56	60	71	55	65	9	16.1
Marketing	81	58	63	60	47	-34	-42.0



Stephen F. Austin State University

Bachelor Degrees Awarded by Major Academic Years 2004 - 2008 (Continued)

COLLEGE / Unit / Major	Academic Year					5-year Change	
	2003-04	2004-05	2005-06	2006-07	2007-08	N	%
EDUCATION	478	559	583	598	603	125	26.2
<i>Elementary Education</i>	206	231	254	276	276	70	34.0
Interdisciplinary Studies	206	231	254	276	276	70	34.0
<i>Human Sciences</i>	97	151	128	137	120	23	23.7
Child Development / Family Living	21	28	26	32	19	-2	-9.5
Family / Consumer Sciences	3	13	12	6	4	1	33.3
Fashion Merchandising	21	23	20	28	26	5	23.8
Food / Nutrition / Dietetics	9	11	9	7	16	7	77.8
Hospitality Administration	25	54	20	32	38	13	52.0
Interior Design	18	22	41	25	12	-6	-33.3
Interior Merchandising	0	0	0	7	5	5	-
<i>Human Services</i>	49	39	41	51	51	2	4.1
Communication Disorders*	24	26	23	26	36	12	50.0
Deaf & Hard of Hearing**	12	2	8	14	6	-6	-50.0
Orientation / Mobility	3	5	6	4	3	0	0.0
Rehabilitation Services	10	6	4	7	6	-4	-40.0
<i>Kinesiology / Health Science</i>	126	138	160	134	156	30	23.8
Dance	3	5	5	3	6	3	100.0
Health Science	15	25	39	39	43	28	186.7
Kinesiology	108	108	116	92	107	-1	-0.9

* Formerly Speech/Hearing Therapy, ** Formerly Hearing Impaired



Bachelor Degrees Awarded by Major
Academic Years 2004 - 2008
(Continued)

COLLEGE / Unit / Major	Academic Year					5-year Change	
	2003-04	2004-05	2005-06	2006-07	2007-08	N	%
FINE ARTS	89	125	101	102	147	58	65.2
<i>Art</i>	33	55	52	40	60	27	81.8
Art	33	53	50	36	58	25	75.8
Art History	0	2	2	4	2	2	-
<i>Music</i>	30	40	27	35	52	22	73.3
Music	30	36	22	35	52	22	73.3
Music Performance	0	4	5	0	0	0	-
Music - Piano Pedagogy	0	0	0	0	0	0	-
<i>Theatre</i>	26	30	22	27	35	9	34.6
FORESTRY / AGRICULTURE	99	117	71	76	83	-16	-16.2
<i>Agriculture</i>	63	69	46	43	45	-18	-28.6
Agribusiness	10	13	7	6	5	-5	-50.0
Agriculture Development	2	5	6	4	2	0	0.0
Agriculture Develop. Production	6	13	5	5	6	13	216.7
Agriculture Machinery	1	6	2	5	3	2	200.0
Agronomy	4	1	0	0	0	-4	-100.0
Animal Science	19	13	12	10	12	-7	-36.8
General Agriculture	5	7	3	3	5	0	0.0
Horticulture	12	7	5	4	5	-7	-58.3
Poultry Science	4	4	6	6	7	3	75.0
<i>Environmental Science</i>	16	11	9	4	11	-5	-31.3
<i>Forestry</i>	20	37	16	29	27	7	35.0
Forestry	5	13	6	7	4	-1	-20.0
Forest Management	3	8	3	4	6	3	100.0
Forest Range Management	1	1	1	0	0	-1	-100.0
Forest Recreation Management	2	3	1	2	3	1	50.0
Forest Wildlife Management	9	12	5	16	14	5	55.6



Stephen F. Austin State University

Bachelor Degrees Awarded by Major Academic Years 2004 - 2008 (Continued)

COLLEGE / Unit / Major	Academic Year					5-year Change	
	2003-04	2004-05	2005-06	2006-07	2007-08	N	%
LIBERAL / APPLIED ARTS	498	491	444	480	475	-23	-4.6
Humanities	3	10	6	0	0	-3	-100.0
Applied Arts / Sciences	55	60	58	58	51	-4	-7.3
Applied Arts / Sciences	55	60	58	58	51	-4	-7.3
Communication	145	147	115	126	104	-41	-28.3
General Communication	0	0	0	0	0	0	-
Journalism	59	67	49	67	41	-18	-30.5
Radio / TV	45	37	37	32	43	-2	-4.4
Communication Studies***	41	43	29	27	20	-21	-51.2
Criminal Justice	48	49	54	65	54	6	12.5
Corrections	6	16	8	13	8	2	33.3
Law Enforcement	31	27	37	44	36	5	16.1
Legal Assistant	11	6	9	8	10	-1	-9.1
English / Philosophy	45	43	37	33	49	4	8.9
English	45	43	37	32	42	-3	-6.7
Creative Writing	0	0	0	1	5	5	-
Philosophy	0	0	0	0	2	2	-
History	31	19	23	35	30	-1	-3.2
Modern Languages	6	13	9	8	9	3	50.0
French	2	0	3	1	0	-2	-100.0
Spanish	4	13	6	7	9	5	125.0
Pol. Sci. / Geog. / Public Adm.	47	39	39	46	45	-2	-4.3
Geography	12	6	7	0	6	-6	-50.0
Liberal Studies	0	0	5	14	10	10	-
Political Science	30	27	22	26	26	-4	-13.3
Public Administration	5	6	5	6	3	-2	-40.0
Psychology	60	60	55	57	74	14	23.3
Social Work	37	31	34	36	43	6	16.2
Sociology	21	20	14	16	16	-5	-23.8
Gerontology	3	2	0	3	2	-1	-33.3
Sociology	18	18	14	13	14	-4	-22.2

***Formerly Speech Communications



Bachelor Degrees Awarded by Major
Academic Years 2004 - 2008
(Continued)

COLLEGE / Unit / Major	Academic Year					5-year Change	
	2003-04	2004-05	2005-06	2006-07	2007-08	N	%
SCIENCES / MATHEMATICS	188	182	176	171	198	10	5.3
<i>Biology</i>	90	77	65	58	72	-18	-20.0
<i>Chemistry</i>	9	4	3	8	3	-6	-66.7
Biochemistry	0	0	0	0	1	1	-
Chemistry	9	4	3	8	2	-7	-77.8
<i>Geology</i>	7	9	3	9	14	7	100.0
<i>Mathematics / Statistics</i>	12	10	15	12	8	-4	-33.3
Mathematics	12	10	15	12	8	-4	-33.3
<i>Nursing</i>	60	72	80	77	89	29	48.3
<i>Physics / Astronomy</i>	10	10	10	7	12	2	20.0
Physics	10	10	10	7	12	2	20.0



Stephen F. Austin State University

Master Degrees Awarded by Major Academic Years 2004 - 2008

COLLEGE / Unit / Major	Academic Year					5-year Change	
	2003-04	2004-05	2005-06	2006-07	2007-08	N	%
SFA TOTALS	437	474	449	457	445	8	1.8
BUSINESS	44	63	37	45	45	1	2.3
Accounting	16	32	22	22	31	15	93.8
Accounting	1	7	2	2	6	5	500.0
Professional Accountancy	15	25	20	20	25	10	66.7
Computer Science	2	5	2	1	2	0	0.0
Computer Science	2	5	2	1	2	0	0.0
General Business	22	26	12	20	11	-11	-50.0
General Business	22	26	12	20	11	-11	-50.0
Management / Marketing / Int. Bus.	4	0	1	2	1	-3	-75.0
Management	4	0	1	2	1	-3	-75.0



Master Degrees Awarded by Major
Academic Years 2004 - 2008
(Continued)

COLLEGE / Unit / Major	Academic Year					5-year Change	
	2003-04	2004-05	2005-06	2006-07	2007-08	N	%
EDUCATION	235	229	187	238	193	-42	-17.9
<i>Elementary Education</i>	6	16	19	14	22	16	266.7
Early Childhood Education	1	4	2	1	6	5	500.0
Elementary Education	5	12	17	13	16	11	220.0
<i>Human Sciences</i>	7	6	4	16	14	7	100.0
Family / Consumer Sciences	7	6	4	16	14	7	100.0
<i>Human Services</i>	55	75	64	67	43	-12	-21.8
Counseling - Community	6	10	12	6	8	2	33.3
Counseling - Rehabilitation	2	5	7	4	2	0	0.0
Counseling - School	8	15	3	11	5	-3	-37.5
School Psychology	1	0	1	1	2	1	100.0
Special Education	26	28	27	28	11	-15	-57.7
Speech Language Pathology	12	17	14	17	15	3	25.0
<i>Kinesiology / Health Science</i>	7	8	14	18	15	8	114.3
Athletic Training	0	0	4	9	8	8	-
Kinesiology	7	8	10	9	7	0	0.0
<i>Secondary Education</i>	160	124	86	123	99	-61	-38.1
Educational Leadership	142	115	77	116	89	-53	-37.3
Secondary Education (General)	18	9	9	7	10	-8	-44.4



Stephen F. Austin State University

Master Degrees Awarded by Major
Academic Years 2004 - 2008
(Continued)

COLLEGE / Unit / Major	Academic Year					5-year Change	
	2003-04	2004-05	2005-06	2006-07	2007-08	N	%
FINE ARTS	21	25	31	16	24	3	14.3
Art	9	14	24	8	12	3	33.3
Art	9	14	24	8	12	3	33.3
Music	10	11	7	8	12	2	20.0
Music	1	1		0	3	2	200.0
Music Conducting	2	3	2	1	1	-1	-50.0
Music Education	1	1	1	2	3	2	200.0
Music Performance	6	6	4	5	5	-1	-16.7
Theatre	2	0	0	0	0	-2	-100.0
FORESTRY / AGRICULTURE	28	25	33	38	36	8	28.6
Agriculture	6	9	7	12	3	-3	-50.0
General Agriculture	6	9	7	12	3	-3	-50.0
Environmental Science	14	8	12	12	6	-8	-57.1
Forestry	8	8	14	14	27	19	237.5
Forestry	8	6	6	4	7	-1	-12.5
Resource Interpretation	0	1	7	8	19	19	100.0
Spatial Science	0	1	1	2	1	1	100.0



Master Degrees Awarded by Major
Academic Years 2004- 2008
(Continued)

COLLEGE / Unit / Major	Academic Year					5-year Change	
	2003-04	2004-05	2005-06	2006-07	2007-08	N	%
LIBERAL / APPLIED ARTS	65	87	82	88	107	42	64.6
<i>Applied Arts / Sciences</i>	11	4	6	10	10	-1	-9.1
Interdisciplinary Studies	11	4	6	10	10	-1	-9.1
<i>Communication</i>	12	16	10	11	10	-2	-16.7
Communication	12	16	10	11	10	-2	-16.7
<i>English / Philosophy</i>	4	9	13	9	7	3	75.0
English	4	9	13	9	7	3	75.0
<i>History</i>	2	3	5	3	7	5	250.0
<i>Pol. Sci. / Geog. / Public Adm.</i>	2	6	5	7	7	5	250.0
Public Administration	2	6	5	7	7	5	250.0
<i>Psychology</i>	5	17	8	19	16	11	220.0
<i>Social Work</i>	29	32	35	29	50	21	72.4



Stephen F. Austin State University

Master Degrees Awarded by Major
Academic Years 2004 - 2008
(Continued)

COLLEGE / Unit / Major	Academic Year					5-year Change	
	2003-04	2004-05	2005-06	2006-07	2007-08	N	%
SCIENCES / MATHEMATICS	44	45	79	32	40	-4	-9.1
Natural Science	1	0	0	0	1	0	0.0
Biology	13	9	9	8	8	-5	-38.5
Biotechnology	9	4	6	12	13	4	44.4
Chemistry	2	0	1	0	0	-2	-100.0
Geology	0	4	9	2	1	1	-
Mathematics / Statistics	17	25	53	8	15	-2	-11.8
Mathematics	5	3	5	4	3	-2	-40.0
Mathematics Teaching	10	22	46	1	10	0	0.0
Statistics	2	0	2	3	2	0	0.0
Physics / Astronomy	2	3	1	2	2	0	0.0
Physics	2	3	1	2	2	0	0.0



Doctoral Degrees Awarded by Major
Academic Years 2004 - 2008

COLLEGE / <i>Unit</i> / Major	Academic Year					5-year Change	
	2003-04	2004-05	2005-06	2006-07	2007-08	N	%
SFA TOTALS	11	12	16	16	17	6	54.5
EDUCATION	11	10	13	16	16	5	45.5
<i>Secondary Education</i>	11	10	13	16	16	5	45.5
Educational Leadership	11	10	13	16	16	5	45.5
FORESTRY / AGRICULTURE	0	2	3	0	1	1	-
Forestry	0	2	3	0	1	1	-



Stephen F. Austin State University

Undergraduate Degrees Awarded - Second Majors
 By College and Unit of Second Major
 Academic Years 2004 - 2008

COLLEGE / Unit / 2nd Major	Academic Year					5-year Change	
	2003-04	2004-05	2005-06	2006-07	2007-08	N	%
SFA TOTALS	186	210	183	166	172	-14	-7.5
BUSINESS	6	10	3	0	2	-4	-66.7
<i>Accounting</i>	0	0	0	1	1	1	-
<i>Computer Science</i>	0	0	0	0	0	0	-
Computer Information Systems	0	0	0	0	0	0	-
<i>Economics / Finance</i>	0	7	0	0	0	0	-
Finance	0	3	0	0	0	0	-
Economics	0	4	0	0	0	0	-
<i>General Business</i>	1	0	0	0	0	-1	-100.0
Office Systems	1	0	0	0	0	-1	-100.0
<i>Management / Marketing / Int. Bus.</i>	5	3	3	0	1	-4	-80.0
International Business	0	0	0	0	1	1	-
Management	2	1	2	0	0	-2	-100.0
Marketing	3	2	1	0	0	-3	-



Undergraduate Degrees Awarded - Second Majors
By College and Unit of Second Major
Academic Years 2004 - 2008
(Continued)

COLLEGE / Unit / 2nd Major	Academic Year					5-year Change	
	2003-04	2004-05	2005-06	2006-07	2007-08	N	%
EDUCATION	5	8	4	7	7	2	40.0
<i>Human Sciences</i>	4	6	3	5	5	1	25.0
Child Development / Family Living	0	0	2	2	2	2	-
Hospitality Administration	0	2	1	1	1	1	-
Family / Consumer Sciences	1	0	0	0	0	-1	-100.0
Fashion Merchandising	2	4	0	2	2	0	0.0
Interior Design	1	0	0	0	0	-1	-100.0
<i>Human Services</i>	0	0	0	0	0	0	-
Special Education	0	0	0	0	0	0	-
<i>Kinesiology / Health Science</i>	1	2	1	2	2	1	100.0
Dance	0	0	1	0	0	0	-
Health Science	1	1	0	2	2	1	100.0
Kinesiology	0	1	0	0	0	0	-
FINE ARTS	4	12	9	10	10	6	150.0
<i>Art</i>	4	12	9	10	10	6	150.0
Art	4	11	8	8	8	4	100.0
Art History	0	1	1	2	2	2	-
<i>Theatre</i>	0	0	0	0	0	0	-
FORESTRY / AGRICULTURE	1	0	0	0	0	-1	-100.0
<i>Forestry</i>	1	0	0	0	0	-1	-100.0
Environmental Science	0	0	0	0	0	0	-
Forestry	1	0	0	0	0	-1	-100.0
<i>Agriculture</i>	0	0	0	0	0	0	-
Agribusiness	0	0	0	0	0	0	-
Poultry Science	0	0	0	0	0	0	-



Stephen F. Austin State University

Undergraduate Degrees Awarded - Second Majors
 By College and Unit of Second Major
 Academic Years 2004 - 2008
 (Continued)

COLLEGE / Unit / 2nd Major	Academic Year					5-year Change	
	2003-04	2004-05	2005-06	2006-07	2007-08	N	%
LIBERAL ARTS	169	178	164	147	151	-18	-10.7
International Studies	4	6	2	4	4	0	0.0
Applied Arts / Sciences	60	58	58	51	51	-9	-15.0
Applied Arts / Sciences	60	58	58	51	51	-9	-15.0
Communication	8	11	9	9	9	1	12.5
General Communication	0	1	0	0	0	0	-
Communication Studies	0	0	2	2	2	2	-
Journalism	4	6	5	5	5	1	25.0
Radio / TV	1	1	2	2	2	1	100.0
Speech Communication	3	3	0	0	0	-3	-100.0
Criminal Justice	4	8	7	7	7	3	75.0
Criminal Justice	4	8	7	7	7	3	75.0
English / Philosophy	11	12	19	9	14	3	27.3
English	11	12	19	9	9	-2	-18.2
Philosophy	0	0	0	0	5	5	-
History	21	16	12	14	14	-7	-33.3
Modern Languages	13	19	13	13	13	0	0.0
French	0	4	3	1	1	1	-
Spanish	13	15	10	12	12	-1	-7.7
Pol. Sci. / Geog. / Public Adm.	10	9	12	6	6	-4	-40.0
Geography	3	3	1	2	2	-1	-33.3
Political Science	6	6	9	3	3	-3	-50.0
Public Administration	1	0	2	1	1	0	0.0
Psychology	16	14	20	17	17	1	6.3
Sociology	22	25	11	16	16	-6	-27.3
Gerontology	0	0	0	0	0	0	-
Sociology	22	25	11	16	16	-6	-27.3



Undergraduate Degrees Awarded - Second Majors
 By College and Unit of Second Major
 Academic Years 2004 - 2008
 (Continued)

COLLEGE / Unit / 2nd Major	Academic Year					5-year Change	
	2003-04	2004-05	2005-06	2006-07	2007-08	N	%
SCIENCES / MATHEMATICS	1	2	3	2	2	1	100.0
<i>Biology</i>	0	0	0	0	0	0	-
<i>Chemistry</i>	0	0	1	1	1	1	-
Biochemistry	0	0	1	1	1	1	-
<i>Geology</i>	0	0	0	0	0	0	-
<i>Mathematics / Statistics</i>	1	2	2	1	1	0	0.0
Mathematics	1	2	2	1	1	0	0.0



This page is intentionally blank.