



Headcount Data

Table of Contents

Enrollment by Classification and Gender 2

Enrollment by Full-time, Part-time and FTE 2

Enrollment by Semester and Gender 2

Enrollment by Classification and Course Load 3

Enrollment by Classification and Course Load Chart 3

Enrollment by Classification 4

Enrollment by Level Charts 5

Enrollment by Ethnicity and Classification 6

Top 15 Undergraduate Majors 7

Total Enrollment by Level and College 8

Total Enrollment by Major 9

Undergraduate Enrollment by Minor 25

Enrollment by Age 30

Enrollment by Residence 30

Enrollment by Texas County 31

Enrollment by East Texas County 32

One-Year Retention Rates 33

First-time Freshmen by Semester and Gender 34

First-time Freshmen Average ACT/SAT Scores 34

First-time Full-time Freshmen by Ethnicity 35

First-time Transfer Students by Ethnicity 35

First-time Undergraduate Transfer Students by Classification 36

Top 20 New Transfer Feeder Institutions 37

Average Class Size 38



Stephen F. Austin State University

Enrollment by Full-time, Part-time and FTE Fall Semesters 2004-2008

Total	Fall Semester					5-year Change	
	2004	2005	2006	2007	2008	N	%
SFA Headcount	11,287	11,435	11,756	11,607	11,990	703	6.2
Full-time Headcount	8,879	9,142	9,439	9,441	9,690	811	9.1
Part-time Headcount	2,408	2,293	2,317	2,166	2,300	-108	-4.5
Full-time Equivalent (FTE)	9,432	9,664	9,940	9,880	10,101	669	7.1

Enrollment by Classification and Gender Full-time and Part-time Fall 2008

Classification	Full-Time			Part-Time			Total		Grand Total
	M	F	Total	M	F	Total	M	F	
SFA Total	3,873	5,817	9,690	842	1,458	2,300	4,715	7,275	11,990
Freshmen	1,367	2,019	3,386	99	136	235	1,466	2,155	3,621
Sophomores	812	1,030	1,842	96	114	210	908	1,144	2,052
Juniors	693	1,175	1,868	91	156	247	784	1,331	2,115
Seniors	758	1,195	1,953	257	406	663	1,015	1,601	2,616
Total Undergraduates	3,630	5,419	9,049	543	812	1,355	4,173	6,231	10,404
Post-baccalaureates	5	29	34	11	17	28	16	46	62
Post-graduates	13	16	29	51	170	221	64	186	250
Master's students	211	339	550	223	441	664	434	780	1,214
Doctoral students	14	14	28	14	18	32	28	32	60
Total Graduates	243	398	641	299	646	945	542	1,044	1,586

Enrollment by Semester and Gender Academic Years 2004 - 2008

Semester	2004-05			2005-2006			2006-2007			2007-2008			2008-2009		
	M	F	Total	M	F	Total	M	F	Total	M	F	Total	M	F	Total
Fall	4,469	6,818	11,287	4,509	6,926	11,435	4,649	7,107	11,756	4,596	7,011	11,607	4,715	7,275	11,990
Spring	4,217	6,347	10,564	4,237	6,391	10,628	4,283	6,539	10,822	4,221	6,427	10,648			
Summer*	3,594	5,499	9,093	2,202	3,295	5,497	2,083	3,209	5,292	2,151	3,355	5,506			

* Combined totals for Summer I and II, unduplicated headcount.

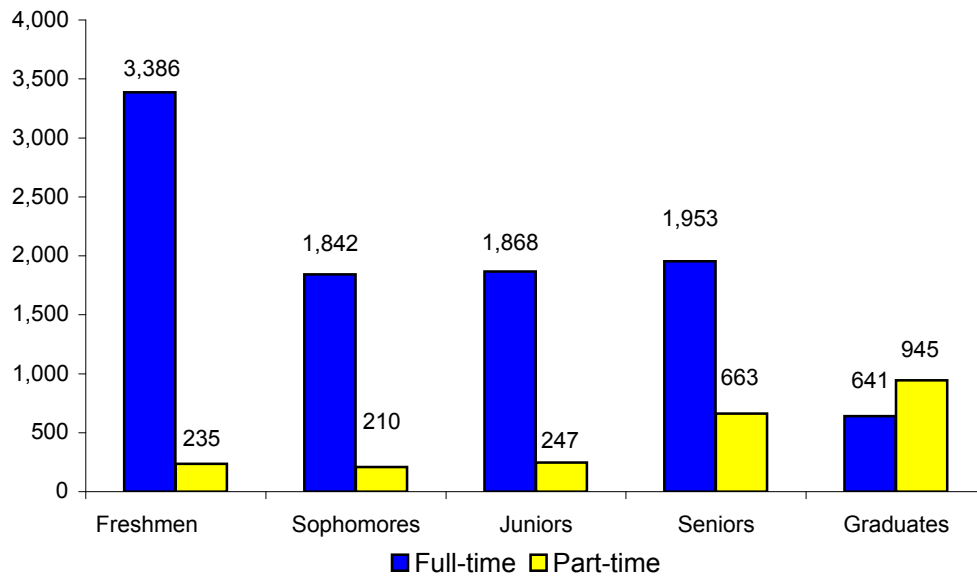


Enrollment by Classification and Course Load Fall Semesters 2004 - 2008

Classification	2004		2005		2006		2007		2008	
	FT	PT	FT	PT	FT	PT	FT	PT	FT	PT
SFA Total	8,879	2,408	9,142	2,293	9,439	2,317	9,441	2,166	9,690	2,300
Freshmen	2,585	262	2,761	267	3,160	264	3,177	219	3,386	235
Sophomores	1,739	239	1,738	251	1,631	231	1,784	204	1,842	210
Juniors	2,092	258	2,198	271	2,162	265	1,974	281	1,868	247
Seniors	1,790	603	1,793	527	1,865	580	1,900	567	1,953	663
Graduates	673	1,046	652	977	621	977	606	895	641	945

FT = Full-time; PT = Part-time

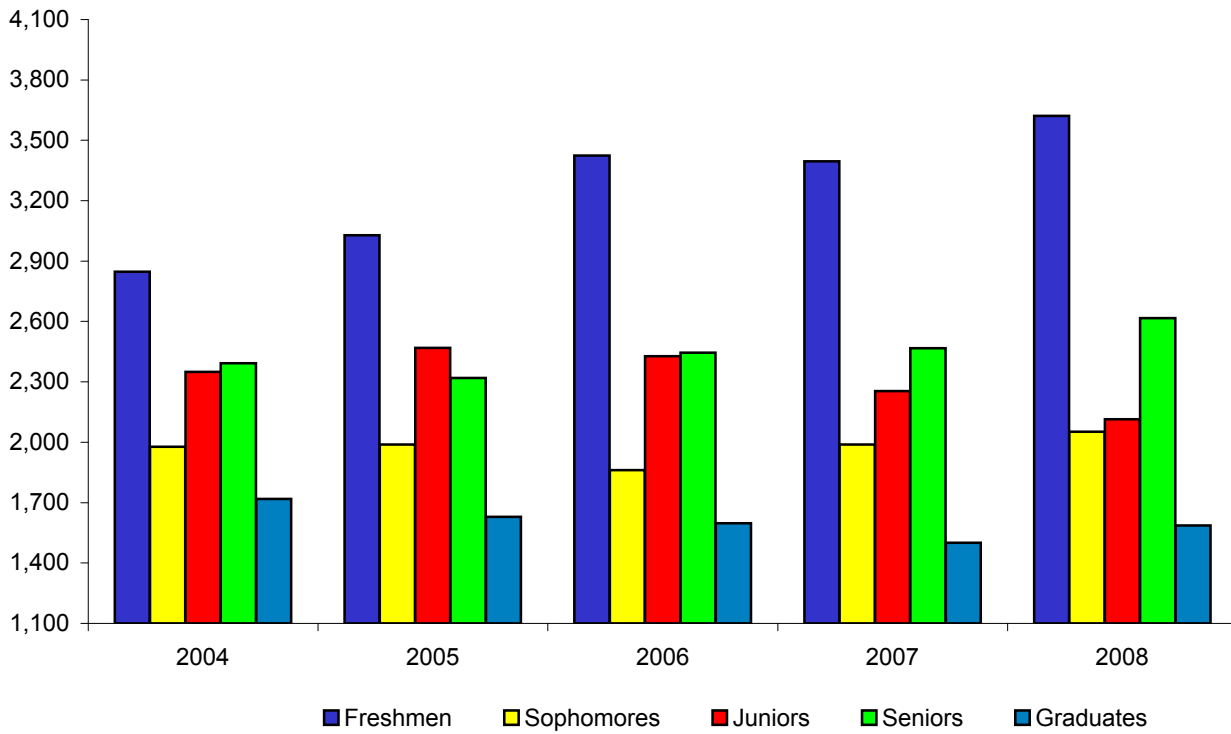
Enrollment by Classification and Course Load Chart Fall 2008





Stephen F. Austin State University

Enrollment by Classification
Fall Semesters 2004 - 2008

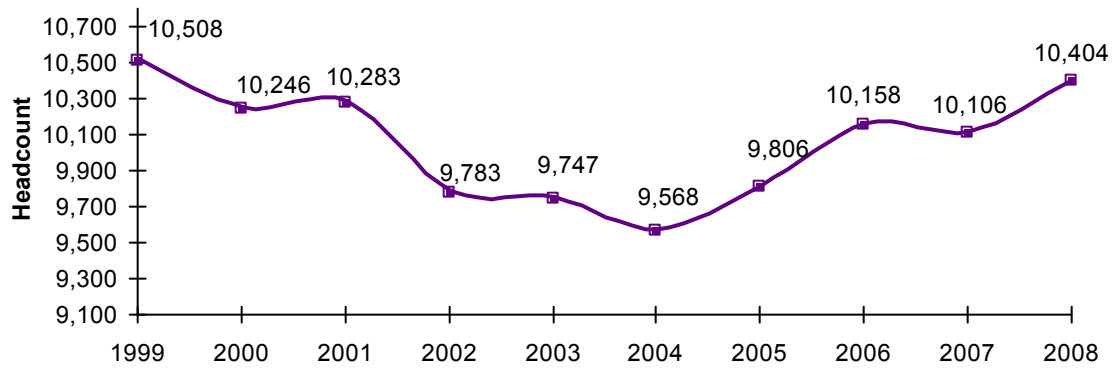


Classification	2004	2005	2006	2007	2008
SFA Total	11,287	11,435	11,756	11,607	11,990
Freshmen	2,847	3,028	3,424	3,396	3,621
Sophomores	1,978	1,989	1,862	1,988	2,052
Juniors	2,350	2,469	2,427	2,255	2,115
Seniors	2,393	2,320	2,445	2,467	2,616
Graduates	1,719	1,629	1,598	1,501	1,586

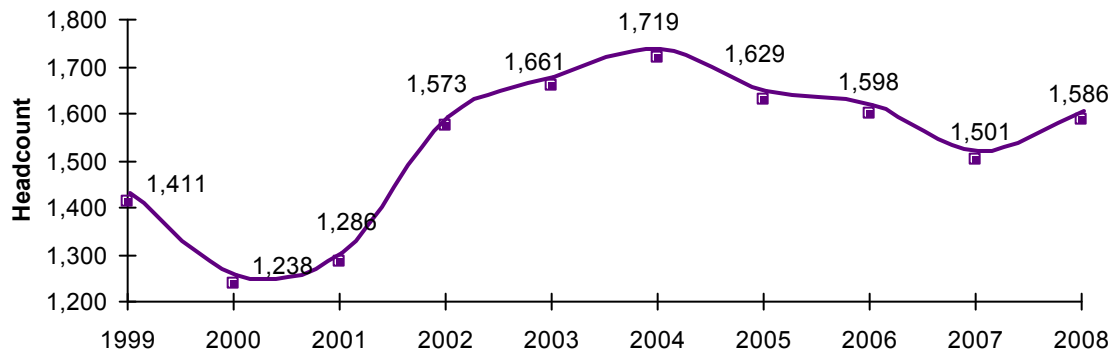


Enrollment by Level Charts Fall Semesters 1999 - 2008

Undergraduate Enrollment



Graduate Enrollment





Stephen F. Austin State University

Enrollment by Ethnicity and Classification Headcount and Percentage Fall Semesters 2004 - 2008

Year/Ethnicity	Freshmen	Sophomores	Juniors	Seniors	Graduates	Total	Percent
2004							
African American	486	373	354	320	178	1,711	15.2
American Indian	32	13	21	11	8	85	0.8
Asian/Pacific Islander	39	20	27	19	16	121	1.1
Hispanic	246	139	165	156	71	777	6.9
White/Non-Hispanic	2,012	1,423	1,764	1,876	1,401	8,476	75.1
Foreign	21	6	14	10	45	96	0.9
Unknown	11	4	5	1	0	21	0.2
TOTAL	2,847	1,978	2,350	2,393	1,719	11,287	
2005							
African American	579	301	426	350	151	1,807	15.8
American Indian	36	13	20	20	8	97	0.8
Asian/Pacific Islander	40	18	23	27	19	127	1.1
Hispanic	289	142	182	155	67	835	7.3
White/Non-Hispanic	2,039	1,498	1,805	1,751	1,322	8,415	73.6
Foreign	35	9	9	13	59	125	1.1
Unknown	10	8	4	4	3	29	0.3
TOTAL	3,028	1,989	2,469	2,320	1,629	11,435	
2006							
African American	735	303	350	405	158	1,951	16.6
American Indian	28	21	12	21	11	93	0.8
Asian/Pacific Islander	34	24	24	25	15	122	1.0
Hispanic	337	163	171	202	77	950	8.1
White/Non-Hispanic	2,233	1,337	1,844	1,782	1,252	8,448	71.9
Foreign	35	9	16	5	82	147	1.3
Unknown	22	5	10	5	3	45	0.4
TOTAL	3,424	1,862	2,427	2,445	1,598	11,756	
2007							
African American	873	341	326	346	165	2,051	17.7
American Indian	17	22	14	19	10	82	0.7
Asian/Pacific Islander	42	29	27	26	13	137	1.2
Hispanic	349	156	185	202	85	977	8.4
White/Non-Hispanic	2,061	1,410	1,682	1,847	1,152	8,152	70.2
Foreign	38	19	12	20	70	159	1.4
Unknown	16	11	9	7	6	49	0.4
TOTAL	3,396	1,988	2,255	2,467	1,501	11,607	
2008							
African American	1,051	453	345	375	203	2,427	20.2
American Indian	23	8	16	20	12	79	0.7
Asian/Pacific Islander	48	23	25	37	14	147	1.2
Hispanic	386	191	182	209	93	1,061	8.8
White/Non-Hispanic	2,031	1,354	1,514	1,944	1,181	8,024	66.9
Foreign	54	14	16	21	75	180	1.5
Unknown	28	9	17	10	8	72	0.6
TOTAL	3,621	2,052	2,115	2,616	1,586	11,990	

Note: Percentages may not total 100.0 due to rounding.



Top 15 Undergraduate Majors
 Fall 2008
 (Sorted by Percent of Total UG Enrollment)

Major	College	Headcount	Percent of College UG Enrollment	Percent of Total UG Enrollment
Interdisciplinary Studies	Education	1,056	39.5	10.1
Nursing	Sciences and Mathematics	855	49.6	8.2
Kinesiology	Education	608	22.7	5.8
General Business	Business	394	20.8	3.8
Psychology	Liberal and Applied Arts	385	14.2	3.7
Music	Fine Arts	322	43.0	3.1
Biology	Sciences and Mathematics	316	18.3	3.0
Marketing	Business	290	15.3	2.8
Law Enforcement	Liberal and Applied Arts	224	8.3	2.2
Management	Business	223	11.7	2.1
Art	Fine Arts	219	29.2	2.1
History	Liberal and Applied Arts	209	7.7	2.0
Radio and Television	Liberal and Applied Arts	200	7.4	1.9
Theatre	Fine Arts	180	24.0	1.7
English	Liberal and Applied Arts	172	6.3	1.7
Top 15 Majors	Total	5,653		55.9



Stephen F. Austin State University

Total Enrollment by Level and College Headcount and Percentage Fall Semesters 2004 - 2008

Total by Level

	2004	2005	2006	2007	2008		5-year Change	
	N	N	N	N	N	%	N	%
SFA Total	11,287	11,435	11,756	11,607	11,990		703	6.2
Undergraduate	9,568	9,806	10,158	10,106	10,404		836	8.7
Graduate-Master & Post Bac.	1,668	1,580	1,538	1,437	1,526		-142	-8.5
Graduate-Doctoral	51	49	60	64	60		9	17.6

Total by College

College	2004	2005	2006	2007	2008		5-year Change	
	N	N	N	N	N	%	N	%
Business	1,785	1,866	1,880	1,931	2,015		230	12.9
Education	3,280	3,382	3,429	3,360	3,524		244	7.4
Fine Arts	773	763	792	758	820		47	6.1
Forestry / Agriculture	587	593	642	648	661		74	12.6
Liberal and Applied Arts	3,074	2,985	3,094	2,973	3,107		33	1.1
Sciences / Mathematics	1,788	1,846	1,919	1,937	1,863		75	4.2

Undergraduate by College

College	2004	2005	2006	2007	2008		5-year Change	
	N	N	N	N	N	%	N	%
Business	1,661	1,755	1,774	1,834	1,898		237	14.3
Education	2,397	2,523	2,561	2,521	2,674		277	11.6
Fine Arts	709	697	730	704	749		40	5.6
Forestry / Agriculture	468	476	521	533	528		60	12.8
Liberal and Applied Arts	2,793	2,734	2,865	2,743	2,831		38	1.4
Sciences / Mathematics	1,540	1,621	1,707	1,771	1,724		184	11.9

Graduate-Master and Post-baccalaureate by College

College	2004	2005	2006	2007	2008		5-year Change	
	N	N	N	N	N	%	N	%
Business	124	111	106	97	117		-7	-5.6
Education	847	821	822	795	808		-39	-4.6
Fine Arts	64	66	62	54	71		7	10.9
Forestry / Agriculture	104	106	107	95	115		11	10.6
Liberal and Applied Arts	281	251	229	230	276		-5	-1.8
Sciences / Mathematics	248	225	212	166	139		-109	-44.0

Graduate-Doctoral by College

College	2004	2005	2006	2007	2008		5-year Change	
	N	N	N	N	N	%	N	%
Education	36	38	46	44	42		6	16.7
Forestry / Agriculture	15	11	14	20	18		3	20.0



Total Enrollment by Major
Fall Semesters 2004 - 2008

COLLEGE / Unit / Major	Fall Semester					5-year Change	
	2004	2005	2006	2007	2008	N	%
SFA Total	11,287	11,435	11,756	11,607	11,990	703	6.2
BUSINESS	1,785	1,866	1,880	1,931	2,015	230	12.9
Accounting	206	314	312	351	391	185	89.8
Accounting	85	86	60	115	170	85	100.0
Pre-Accounting	0	59	97	77	31	31	-
Professional Accountancy	121	169	155	159	190	69	57.0
Computer Science	181	160	139	175	166	-15	-8.3
Computer Information Systems	26	34	49	52	57	31	119.2
Computer Science	118	95	85	121	95	-23	-19.5
Information Technology	0	0	0	0	13	13	-
Pre-Computer Information Systems	37	31	5	2	1	-36	-97.3
Economics / Finance	109	167	204	208	230	121	111.0
Business Economics	8	8	8	17	39	31	387.5
Economics	9	10	13	11	12	3	33.3
Finance	92	89	95	109	157	65	70.7
Pre-Business Economics	0	36	50	36	8	8	-
Pre-Finance	0	24	38	35	14	14	-
General Business	277	410	429	448	442	165	59.6
General Business	272	317	283	350	430	158	58.1
Office Systems	5	3	1	0	0	-5	-100.0
Pre-General Business	0	90	145	98	12	12	-
Management / Marketing / Int. Business	388	555	620	625	659	271	69.8
International Business	55	62	59	70	84	29	52.7
Management	168	191	188	208	240	72	42.9
Marketing	165	166	158	189	291	126	76.4
Pre-International Business	0	21	37	27	11	11	-
Pre-Management	0	61	71	46	10	10	-
Pre-Marketing	0	54	107	85	23	23	-
Pre-Business	620	255	171	110	67	-553	-89.2
Transient Student	0	0	0	0	1	1	-
Undecided BUSINESS	4	5	5	14	59	55	1375.0

Note: Variations in enrollments by department are partially due to reporting changes for pre-business majors.



Stephen F. Austin State University

Total Enrollment by Major
Fall Semesters 2004 - 2008
(Continued)

COLLEGE / Unit / Major	Fall Semester					5-year Change	
	2004	2005	2006	2007	2008	N	%
EDUCATION	3,280	3,382	3,429	3,360	3,524	244	7.4
<i>Elementary Education</i>	1,262	1,286	1,266	1,225	1,228	-34	-2.7
Early Childhood Education	8	4	5	8	8	0	0.0
Elementary Education	163	147	152	150	163	0	0.0
Interdisciplinary Studies	1,091	1,135	1,109	1,067	1,057	-34	-3.1
<i>Human Sciences</i>	503	529	580	511	624	121	24.1
Child Development / Family Living	71	67	75	68	112	41	57.7
Family / Consumer Sciences	49	53	67	42	71	22	44.9
Fashion Merchandising	87	103	112	100	100	13	14.9
Food / Nutrition / Dietetics	47	53	61	47	63	16	34.0
Hospitality Administration	127	113	142	143	165	38	29.9
Interior Design	122	140	117	100	100	-22	-18.0
Interior Merchandising	0	0	6	11	13	13	-
<i>Human Services</i>	421	430	422	426	462	41	9.7
Communication Disorders*	104	106	107	110	137	33	31.7
Counseling	41	26	2	2	0	-41	-100.0
Counseling - Community	7	11	20	25	28	21	300.0
Counseling - Rehabilitation	12	0	7	9	10	-2	-16.7
Counseling - School	17	12	29	32	39	22	129.4
Deaf & Hard of Hearing**	48	64	94	84	70	22	45.8
Orientation / Mobility	15	11	11	13	13	-2	-13.3
Rehabilitation Services	23	37	19	21	23	0	0.0
School Psychology	5	8	10	10	10	5	100.0
Special Education	117	122	83	79	91	-26	-22.2
Speech Pathology	32	33	40	41	41	9	28.1
<i>Kinesiology / Health Science</i>	638	687	695	757	803	165	25.9
Athletic Training	0	14	14	15	15	15	-
Dance	25	25	33	32	40	15	60.0
Health Science	84	115	109	116	102	18	21.4
Kinesiology	529	533	539	594	646	117	22.1
<i>Secondary Education</i>	406	387	374	362	350	-56	-13.8
Educational Admin. And Supervision	0	0	10	0	0	0	-
Educational Leadership	234	215	224	258	252	18	7.7
School Supervision	43	23	2	0	0	-43	-100.0
Secondary Education (General)	129	149	138	104	98	-31	-24.0
Transient Student	0	0	0	0	1	1	-
Undecided EDUCATION	50	63	92	79	56	6	12.0

*Formerly named Speech/Hearing Therapy, **Formerly named Hearing Impaired



Total Enrollment by Major
Fall Semesters 2004 - 2008
(Continued)

COLLEGE / Unit / Major	Fall Semester					5-year Change	
	2004	2005	2006	2007	2008	N	%
FINE ARTS	773	763	792	758	820	47	6.1
<i>Art</i>	301	275	271	253	265	-36	-12.0
Art	295	266	253	236	247	-48	-16.3
Art History	6	9	18	17	18	12	200.0
<i>Music</i>	279	302	336	325	363	84	30.1
Music	210	212	307	298	325	115	54.8
Music Conducting	4	3	4	4	7	3	75.0
Music Education	5	11	11	10	15	10	200.0
Music Performance	57	76	14	13	16	-41	-71.9
Music - Piano Pedagogy	3	0	0	0	0	-3	-100.0
<i>Theatre</i>	176	172	176	171	180	4	2.3
Undecided FINE ARTS	17	14	9	9	12	-5	-29.4
FORESTRY / AGRICULTURE	621	627	674	680	661	40	6.4
<i>Agriculture</i>	250	251	264	287	277	27	10.8
Agriculture Business	39	31	34	36	35	-4	-10.3
Agriculture Development	28	29	24	17	17	-11	-39.3
Agriculture Development Production	0	0	14	22	20	20	-
Agriculture Machinery	14	10	14	11	9	-5	-35.7
Agronomy	1	1	3	2	2	1	100.0
Animal Science	54	71	74	92	93	39	72.2
General Agriculture	54	43	34	36	37	-17	-31.5
General Agriculture (Pre-Vet.)	27	23	20	12	22	-5	-18.5
Horticulture	20	23	24	36	28	8	40.0
Poultry Science	13	20	23	23	14	1	7.7
<i>Environmental Science</i>	88	83	92	92	98	10	11.4
<i>Forestry</i>	278	290	315	298	277	-1	-0.4
Forest Management	22	21	28	21	26	4	18.2
Forest Range Management	3	3	1	1	1	-2	-66.7
Forest Recreation Management	12	11	17	13	12	0	0.0
Forest Wildlife Management	89	103	127	117	107	18	20.2
Forestry	152	143	88	92	90	-62	-40.8
Resource Interpretation	0	9	49	50	37	37	-
Spatial Science	0	0	5	4	4	4	-
Transient Student	0	0	0	1	0	0	-
Undecided FORESTRY / AGRICULTURE	5	3	3	2	9	4	80.0



Stephen F. Austin State University

Total Enrollment by Major
Fall Semesters 2004 - 2008
(Continued)

COLLEGE / Unit / Major	Fall Semester					5-year Change	
	2004	2005	2006	2007	2008	N	%
LIBERAL / APPLIED ARTS	3,074	2,985	3,094	2,973	3,107	33	1.1
Applied Arts / Sciences	146	130	168	124	103	-43	-29.5
Applied Arts & Sciences	146	130	149	122	100	-46	-31.5
Career / Self Improvement	0	0	19	2	3	3	-
Communication	600	544	554	492	492	-108	-18.0
Communication	0	0	0	0	23	23	-
Communication Studies	175	135	86	88	101	-74	-42.3
General Communication	35	35	28	24	0	-35	-100.0
Journalism	210	195	211	165	168	-42	-20.0
Radio / TV / Film	180	179	229	215	200	20	11.1
English / Philosophy	203	201	207	209	230	27	13.3
American English Language Institute	0	0	0	0	1	1	-
Creative Writing	0	0	9	22	29	29	-
English	203	201	194	180	192	-11	-5.4
Philosophy	0	0	4	7	8	8	-
Government	492	491	497	476	517	25	5.1
Corrections	28	36	36	24	27	-1	-3.6
Criminal Justice	136	75	84	73	0	-136	-100.0
Law Enforcement	91	146	152	140	224	133	146.2
Legal Assistant	28	38	33	32	42	14	50.0
Political Science	173	163	160	161	157	-16	-9.2
Public Administration	36	33	32	46	67	31	86.1
History	191	202	210	216	233	42	22.0
Modern Language	49	40	43	47	46	-3	-6.1
French	6	5	6	11	12	6	100.0
Spanish	43	35	37	36	34	-9	-20.9
Psychology	390	365	401	413	396	6	1.5
Social Work	203	246	237	248	283	80	39.4
Pre-Social Work	81	124	100	82	82	1	1.2
Social Work	122	122	137	166	201	79	64.8
Sociology	83	71	86	87	107	24	28.9
Geography	20	19	12	18	16	-4	-20.0
Gerontology	5	3	5	3	5	0	0.0
Sociology	58	49	69	66	86	28	48.3
Concurrent / Not Designated	99	102	106	96	98	-1	-1.0
Humanities	28	17	0	0	0	-28	-100.0
Interdisciplinary Studies	43	35	35	29	26	-17	-39.5
Liberal Studies	3	15	28	33	33	30	1000.0
Provisional Admission	1	0	0	0	1	0	0.0
Transient Students	0	1	3	4	1	1	-
Undecided LIBERAL / APPLIED ARTS	543	525	519	499	541	-2	-0.4



Total Enrollment by Major
Fall Semesters 2004 - 2008
(Continued)

COLLEGE / Unit / Major	Fall Semester					5-year Change	
	2004	2005	2006	2007	2008	N	%
SCIENCES / MATHEMATICS	1,754	1,812	1,887	1,905	1,863	109	6.2
<i>Biology</i>	232	269	272	358	330	98	42.2
<i>Biotechnology</i>	24	34	50	37	36	12	50.0
<i>Chemistry</i>	27	34	50	78	91	64	237.0
Chemistry	27	34	44	55	46	19	70.4
Biochemistry	0	0	6	23	45	45	-
<i>Geology</i>	63	57	66	75	89	26	41.3
<i>Mathematics / Statistics</i>	169	147	135	129	128	-41	-24.3
Mathematics	86	94	101	101	116	30	34.9
Statistics	3	4	6	6	10	7	233.3
Mathematics Teaching	80	49	28	22	2	-78	-97.5
<i>Natural Science</i>	1	0	1	0	1	0	0.0
<i>Nursing</i>	703	747	782	852	887	184	26.2
<i>Physics / Astronomy</i>	65	64	71	85	75	10	15.4
Physics	65	64	71	85	75	10	15.4
<i>Preprofessional</i>	458	441	437	251	195	-263	-57.4
Pre-Dental Hygiene	6	6	6	4	0	-6	-100.0
Pre-Dentistry	31	28	38	24	15	-16	-51.6
Pre-Engineering	69	62	44	52	49	-20	-29.0
Pre-Health Info. Management	0	1	1	0	0	0	-
Pre-Medical Technology	4	12	5	0	0	-4	-100.0
Pre-Medicine	172	155	160	94	64	-108	-62.8
Pre-Occupational Therapy	6	8	10	2	2	-4	-66.7
Pre-Optometry	8	7	8	1	1	-7	-87.5
Pre-Pharmacy	65	61	66	24	28	-37	-56.9
Pre-Physical Therapy	51	64	59	38	30	-21	-41.2
Pre-Physician's Assistant	21	18	18	5	2	-19	-90.5
Pre-Professional Biology	2	4	3	1	1	-1	-50.0
Pre-Veterinary Medicine	15	12	13	5	3	-12	-80.0
Undecided Preprofessional	8	3	6	1	0	-8	-100.0
Provisional Admission	0	0	0	1	0	0	-
Transient Students	0	0	0	1	0	0	-
Undecided SCIENCES / MATHEMATICS	12	19	23	38	31	19	158.3



Stephen F. Austin State University

Undergraduate Enrollment by Major Fall Semesters 2004 - 2008

COLLEGE / Unit / Major	Fall Semester					5-year Change	
	2004	2005	2006	2007	2008	N	%
SFA Total	9,403	9,657	9,980	9,964	10,284	881	9.4
BUSINESS	1,661	1,755	1,774	1,834	1,898	237	14.3
Accounting	155	271	273	308	340	185	119.4
Accounting	74	74	55	106	159	85	114.9
Pre-Accounting	0	59	97	77	31	31	-
Professional Accountancy	81	138	121	125	150	69	85.2
Computer Science	171	156	131	165	158	-13	-7.6
Computer Information Systems	26	33	49	52	57	31	119.2
Computer Science	108	92	77	111	87	-21	-19.4
Pre-Computer Information Systems	37	31	5	2	1	-36	-97.3
Information Technology	0	0	0	0	13	13	-
Economics / Finance	108	165	204	208	229	121	112.0
Business Economics	8	8	8	17	39	31	387.5
Economics	9	10	13	11	12	3	33.3
Finance	91	89	95	109	156	65	71.4
Pre-Business Economics	0	35	50	36	8	8	-
Pre-Finance	0	23	38	35	14	14	-
General Business	224	357	384	417	406	182	81.3
General Business	219	264	239	319	394	175	79.9
Office Systems	5	3	1	0	0	-5	-100.0
Pre-General Business	0	90	144	98	12	12	-
Management / Marketing. / Int. Business	383	551	611	612	641	258	67.4
International Business	55	62	59	70	84	29	52.7
Management	163	187	179	195	223	60	36.8
Marketing	165	166	158	189	290	125	75.8
Pre-International Business	0	21	37	27	11	11	-
Pre-Management	0	61	71	46	10	10	-
Pre-Marketing	0	54	107	85	23	23	-
Pre-Business	619	255	171	110	67	-552	-89.2
Transient Student	0	0	0	0	1	1	-
Undecided BUSINESS	1	0	0	14	56	55	5500.0

Note: Variations in enrollments by department are partially due to reporting changes for pre-business majors.



Undergraduate Enrollment by Major
Fall Semesters 2004 - 2008
(Continued)

COLLEGE / Unit / Major	Fall Semester					5-year Change	
	2004	2005	2006	2007	2008	N	%
EDUCATION	2,397	2,523	2,561	2,521	2,674	277	11.6
<i>Elementary Education</i>	1,090	1,133	1,107	1,065	1,056	-34	-3.1
Interdisciplinary Studies	1,090	1,133	1,107	1,065	1,056	-34	-3.1
<i>Human Sciences</i>	477	500	539	484	581	104	21.8
Child Development / Family Living	70	67	75	68	111	41	58.6
Family / Consumer Sciences	29	31	30	17	32	3	10.3
Fashion Merchandising	87	102	112	100	100	13	14.9
Food / Nutrition / Dietetics	44	52	60	47	63	19	43.2
Hospitality Administration	127	112	140	142	164	37	29.1
Interior Design	120	136	116	99	98	-22	-18.3
Interior Merchandising	0	0	6	11	13	13	-
<i>Human Services</i>	187	204	227	226	243	56	29.9
Communication Disorders*	102	103	105	110	137	35	34.3
Deaf & Hard of Hearing**	48	64	92	82	70	22	45.8
Orientation / Mobility	15	11	11	13	13	-2	-13.3
Rehabilitation Services	22	26	19	21	23	1	4.5
<i>Kinesiology / Health Science</i>	608	652	650	706	750	142	23.4
Dance	25	25	33	32	40	15	60.0
Health Science	84	115	109	116	102	18	21.4
Kinesiology	499	512	508	558	608	109	21.8
Transient Student	0	0	0	0	1	1	-
Undecided EDUCATION	35	34	38	40	43	8	22.9

*Formerly named Speech/Hearing Therapy, **Formerly named Hearing Impaired



Stephen F. Austin State University

Undergraduate Enrollment by Major Fall Semesters 2004 - 2008 (Continued)

COLLEGE / Unit / Major	Fall Semester					5-year Change	
	2004	2005	2006	2007	2008	N	%
FINE ARTS	709	697	730	704	749	40	5.6
Art	261	240	242	230	237	-24	-9.2
Art	255	231	224	213	219	-36	-14.1
Art History	6	9	18	17	18	12	200.0
Music	256	274	305	296	322	66	25.8
Music	209	210	305	296	322	113	54.1
Music Performance	44	64	0	0	0	-44	-100.0
Music - Piano Pedagogy	3	0	0	0	0	-3	-100.0
Theatre	175	171	176	171	180	5	2.9
Undecided FINE ARTS	17	12	7	7	10	-7	-41.2
FORESTRY / AGRICULTURE	468	476	521	533	528	60	12.8
Agriculture	224	229	246	272	261	37	16.5
Agriculture Business	39	31	34	36	35	-4	-10.3
Agriculture Development	28	29	24	17	17	-11	-39.3
Agriculture Development Production	0	0	14	22	20	20	-
Agriculture Machinery	14	10	14	11	9	-5	-35.7
Agronomy	1	1	3	2	2	1	100.0
Animal Science	54	71	74	92	93	39	72.2
Horticulture	20	23	24	36	28	8	40.0
General Agriculture	28	21	17	22	21	-7	-25.0
General Agriculture (Pre-Vet.)	27	23	20	12	22	-5	-18.5
Poultry Science	13	20	22	22	14	1	7.7
Environmental Science	54	49	60	60	67	13	24.1
Forestry	188	196	214	199	192	4	2.1
Forestry	63	59	41	47	46	-17	-27.0
Forest Management	22	21	28	21	26	4	18.2
Forest Recreation Management	12	11	17	13	12	0	0.0
Forest Range Management	3	3	1	1	1	-2	-66.7
Forest Wildlife Management	88	102	127	117	107	19	21.6
Transient Student	0	0	0	1	0	0	-
Undecided FORESTRY / AGRICULTURE	2	2	1	1	8	6	300.0



Undergraduate Enrollment by Major
Fall Semesters 2004 - 2008
(Continued)

COLLEGE / Unit / Major	Fall Semester					5-year Change	
	2004	2005	2006	2007	2008	N	%
LIBERAL / APPLIED ARTS	2,628	2,585	2,687	2,601	2,711	83	3.2
Applied Arts / Sciences	145	130	166	124	103	-42	-29.0
Applied Arts & Sciences	145	130	149	122	100	-45	-31.0
Career / Self Improvement	0	0	17	2	3	3	-
Communication	565	509	526	467	469	-96	-17.0
Communication	0	0	0	0	0	0	-
Communication Studies	175	135	86	88	101	-74	-42.3
Journalism	210	195	211	165	168	-42	-20.0
Radio / TV / Film	180	179	229	214	200	20	11.1
English / Philosophy	178	176	184	188	208	30	16.9
American English Language Institute	0	0	0	0	1	1	-
Creative Writing	0	0	9	22	28	28	-
English	178	176	171	159	172	-6	-3.4
Philosophy	0	0	4	7	8	8	-
Government	471	471	474	447	469	-2	-0.4
Corrections	28	36	36	24	27	-1	-3.6
Criminal Justice	136	75	84	73	0	-136	-100.0
Law Enforcement	91	146	152	140	224	133	146.2
Legal Assistant	28	38	33	32	42	14	50.0
Political Science	173	163	159	161	157	-16	-9.2
Public Administration	15	13	10	17	19	4	26.7
History	172	183	188	196	209	37	21.5
Modern Language	45	40	43	47	46	1	2.2
French	6	5	6	11	12	6	100.0
Spanish	39	35	37	36	34	-5	-12.8
Psychology	337	325	357	390	385	48	14.2
Social Work	143	175	189	174	193	50	35.0
Pre-Social Work	79	120	98	82	82	3	3.8
Social Work	64	55	91	92	111	47	73.4
Sociology	63	52	74	69	90	27	42.9
Geography	20	19	12	18	16	-4	-20.0
Gerontology	5	3	5	3	4	-1	-20.0
Sociology	58	49	69	66	86	28	48.3
Concurrent / Not Designated	99	102	106	96	98	-1	-1.0
Humanities	28	17	0	0	0	-28	-100.0
Interdisciplinary Studies	2	0	0	0	0	-2	-100.0
Liberal Studies	3	15	28	33	33	30	1000.0
Provisional Admission	1	0	0	0	1	0	0.0
Transient Student	0	1	3	4	1	1	-
Undecided LIBERAL / APPLIED ARTS	521	519	515	490	509	-12	-2.3



Stephen F. Austin State University

Undergraduate Enrollment by Major Fall Semesters 2004 - 2008 (Continued)

COLLEGE / Unit / Major	Fall Semester					5-year Change	
	2004	2005	2006	2007	2008	N	%
SCIENCES / MATHEMATICS	1,540	1,621	1,707	1,771	1,724	184	11.9
Biology	200	241	248	341	316	116	58.0
Chemistry	22	32	50	75	83	61	277.3
Chemistry	22	32	44	52	38	16	12.8
Biochemistry	0	0	6	23	45	45	-
Geology	45	42	57	66	72	27	60.0
Mathematics / Statistics	73	81	83	91	106	33	45.2
Mathematics	73	81	83	91	106	33	45.2
Nursing	680	719	753	832	855	175	25.7
Physics / Astronomy	59	58	66	79	70	11	18.6
Physics	59	58	66	79	70	11	18.6
Preprofessional	449	437	434	250	193	-256	-57.0
Pre-Professional Biology	2	4	3	1	1	-1	-50.0
Pre-Dentistry	30	27	38	24	15	-15	-50.0
Pre-Dental Hygiene	6	6	6	4	0	-6	-100.0
Pre-Engineering	69	62	44	52	48	-21	-30.4
Pre-Health Info. Management	0	1	1	0	0	0	100
Pre-Medical Technology	4	12	5	0	0	-4	100
Pre-Medicine	170	154	159	94	64	-106	-62.4
Pre-Occupational Therapy	6	8	10	2	2	-4	-66.7
Pre-Optometry	8	7	8	1	1	-7	-87.5
Pre-Physician's Assistant	21	18	18	5	2	-19	-90.5
Pre-Pharmacy	64	60	65	23	28	-36	-56.3
Pre-Physical Therapy	49	63	59	38	29	-20	-40.8
Pre-Veterinary Medicine	15	12	12	5	3	-12	-80.0
Undecided Preprofessional	5	3	6	1	0	-5	-100.0
Provisional Admission	0	0	0	1	0	0	-
Transient Student	0	0	0	1	0	0	-
Undecided SCIENCES / MATHEMATICS	12	11	16	35	29	17	141.7



Graduate-Master and Post-baccalaureate Enrollment by Major Fall Semesters 2004 - 2008

COLLEGE / Unit / Major	Fall Semester					5-year Change	
	2004	2005	2006	2007	2008	N	%
SFA Total	1,668	1,580	1,538	1,437	1,526	-142	-8.5
BUSINESS	124	111	106	97	117	-7	-5.6
Accounting	51	43	39	43	51	0	0.0
Accounting	11	12	5	9	11	0	0.0
Professional Accountancy	40	31	34	34	40	0	0.0
Computer Science	10	4	8	10	8	-2	-20.0
Computer Information Systems	0	1	0	0	0	0	-
Computer Science	10	3	8	10	8	-2	-20.0
Economics / Finance	1	2	0	0	1	0	0.0
Finance	1	0	0	0	1	0	0.0
Pre-Business Economics	0	1	0	0	0	0	-
Pre-Finance	0	1	0	0	0	0	-
General Business	53	53	45	31	36	-17	-32.1
General Business	53	53	44	31	36	-17	-32.1
Pre-General Business	0	0	1	0	0	0	-
Management / Marketing. / Int. Business	5	4	9	13	18	13	260.0
Management	5	4	9	13	17	12	240.0
Marketing	0	0	0	0	1	1	-
Pre-Business	1	0	0	0	0	-1	-100.0
Undecided BUSINESS	3	5	5	0	3	0	0.0



Stephen F. Austin State University

Graduate-Master and Post-baccalaureate Enrollment by Major Fall Semesters 2004 - 2008 (Continued)

COLLEGE / Unit /Major	Fall Semester					5-year Change	
	2004	2005	2006	2007	2008	N	%
EDUCATION	847	821	822	795	808	-39	-4.6
<i>Elementary Education</i>	172	153	159	160	172	0	0.0
Early Childhood Education	8	4	5	8	8	0	0.0
Elementary Education	163	147	152	150	163	0	0.0
Interdisciplinary Studies	1	2	2	2	1	0	0.0
Reading Education	0	0	0	0	0	0	-
<i>Human Sciences</i>	26	29	41	27	43	17	65.4
Child Development / Family Living	1	0	0	0	1	0	0.0
Family / Consumer Sciences	20	22	37	25	39	19	95.0
Fashion Merchandising	0	1	0	0	0	0	-
Food / Nutrition / Dietetics	3	1	1	0	0	-3	-100.0
Hospitality Administration	0	1	2	1	1	1	-
Interior Design	2	4	1	1	2	0	0.0
<i>Human Services</i>	234	226	195	200	219	-15	-6.4
Communication Disorders*	2	3	2	0	0	2	100.0
Counseling	41	26	2	2	0	-41	-100.0
Counseling - Community	7	11	20	25	28	21	300.0
Counseling - Rehabilitation	12	0	7	9	10	-2	-16.7
Counseling - School	17	12	29	32	39	22	129.4
Deaf & Hard of Hearing**	0	0	2	2	0	0	-
Rehabilitation Services	1	11	0	0	0	-1	-100.0
School Psychology	5	8	10	10	10	5	100.0
Special Education	117	122	83	79	91	-26	-22.2
Speech Pathology	32	33	40	41	41	9	28.1
<i>Kinesiology / Health Science</i>	30	35	45	51	53	23	76.7
Athletic Training	0	14	14	15	15	15	-
Health Science	0	0	0	0	0	0	-
Kinesiology	30	21	31	36	38	8	26.7
<i>Secondary Education</i>	370	349	328	318	308	-62	-16.8
Educational Leadership	198	177	188	214	210	12	6.1
School Supervision	43	23	2	0	0	-43	-100.0
Secondary Education (General)	129	149	138	104	98	-31	-24.0
Undecided EDUCATION	15	29	54	39	13	-2	-13.3

*Formerly named Speech/Hearing Therapy, **Formerly named Hearing Impaired



Graduate-Master and Post-baccalaureate Enrollment by Major
Fall Semesters 2004 - 2008
(Continued)

COLLEGE / Unit / Major	Fall Semester					5-year Change	
	2004	2005	2006	2007	2008	N	%
FINE ARTS	64	66	62	54	71	7	10.9
<i>Art</i>	40	35	29	23	28	-12	-30.0
Art	40	35	29	23	28	-12	-30.0
<i>Music</i>	23	28	31	29	41	18	78.3
Music	1	2	2	2	3	2	200.0
Music Conducting	4	3	4	4	7	3	75.0
Music Education	5	11	11	10	15	10	200.0
Music Performance	13	12	14	13	16	3	23.1
<i>Theatre</i>	1	1	0	0	0	-1	-100.0
<i>Undecided FINE ARTS</i>	0	2	2	2	2	2	-
FORESTRY / AGRICULTURE	138	140	139	127	115	-23	-16.7
<i>Agriculture</i>	26	22	18	15	16	-10	-38.5
General Agriculture	26	22	17	14	16	-10	-38.5
Poultry Science	0	0	1	1	0	0	-
<i>Environmental Science</i>	34	34	32	32	31	-3	-8.8
<i>Forestry</i>	75	83	87	79	67	-8	-10.7
Forestry	74	73	33	25	26	-48	-64.9
Forest Wildlife Management	1	1	0	0	0	-1	-100.0
Resource Interpretation	0	9	49	50	37	37	-
Spatial Science	0	0	5	4	4	4	-
<i>Undecided FORESTRY / AGRICULTURE</i>	3	1	2	1	1	-2	-66.7



Stephen F. Austin State University

Graduate-Master and Post-baccalaureate Enrollment by Major Fall Semesters 2004 - 2008 (Continued)

COLLEGE / Unit / Major	Fall Semester					5-year Change	
	2004	2005	2006	2007	2008	N	%
LIBERAL / APPLIED ARTS	281	251	229	230	276	-5	-1.8
Applied Arts / Sciences	1	0	2	0	0	-1	-100.0
Applied Arts & Sciences	1	0	0	0	0	-1	-100.0
Career / Self Improvement	0	0	2	0	0	0	-
Communication	35	35	28	25	23	-12	-34.3
Communication	0	0	0	0	23	23	-
General Communication	35	35	28	24	0	-35	-100.0
Radio / TV / Film	0	0	0	1	0	0	-
English / Philosophy	25	25	23	21	21	-4	-16.0
English	25	25	23	21	20	-5	-20.0
Creative Writing	0	0	0	0	1	1	-
Government	21	20	23	29	48	27	128.6
Political Science	0	0	1	0	0	0	-
Public Administration	21	20	22	29	48	27	128.6
History	19	19	22	20	24	5	26.3
Modern Language	4	0	0	0	0	-4	-100.0
Spanish	4	0	0	0	0	-4	-100.0
Psychology	53	40	44	23	11	-42	-79.2
Social Work	60	71	48	74	90	30	50.0
Pre-Social Work	2	4	2	0	0	-2	-100.0
Social Work	58	67	46	74	90	32	55.2
Sociology	0	0	0	0	1	1	-
Geography	0	0	0	0	0	0	-
Gerontology	0	0	0	0	1	1	-
Sociology	0	0	0	0	0	0	-
Interdisciplinary Studies	41	35	35	29	26	-15	-36.6
Undecided LIBERAL / APPLIED ARTS	22	6	4	9	32	10	45.5



Graduate-Master and Post-baccalaureate Enrollment by Major
Fall Semesters 2004 - 2008
(Continued)

COLLEGE / Unit / Major	Fall Semester					5-year Change	
	2004	2005	2006	2007	2008	N	%
SCIENCES / MATHEMATICS	214	191	180	134	139	-75	-35.0
<i>Biology</i>	32	28	24	17	14	-18	-56.3
<i>Biotechnology</i>	24	34	50	37	36	12	50.0
<i>Chemistry</i>	5	2	0	3	8	3	60.0
<i>Geology</i>	18	15	9	9	17	-1	-5.6
Mathematics / Statistics	96	66	52	38	22	-74	-77.1
Mathematics	13	13	18	10	10	-3	-23.1
Statistics	3	4	6	6	10	7	233.3
Mathematics Teaching	80	49	28	22	2	-78	-97.5
<i>Natural Science</i>	1	0	1	0	1	0	0.0
<i>Nursing</i>	23	28	29	20	32	9	39.1
Physics / Astronomy	6	6	5	6	5	-1	-16.7
Physics	6	6	5	6	5	-1	-16.7
Preprofessional	9	4	3	1	2	-7	-77.8
Pre-Dentistry	1	1	0	0	0	-1	-
Pre-Engineering	0	0	0	0	1	1	-
Pre-Medicine	2	1	1	0	0	-2	-100.0
Pre-Pharmacy	1	1	1	1	0	-1	-100.0
Pre-Physical Therapy	2	1	0	0	1	-1	-50.0
Pre-Veterinary Medicine	0	0	1	0	0	0	-
Undecided Preprofessional	3	0	0	0	0	-3	-100.0
Undecided SCIENCES / MATHEMATICS	0	8	7	3	2	2	-



Stephen F. Austin State University

Graduate-Doctoral Enrollment by Major Fall Semesters 2004 - 2008

COLLEGE / Unit / Major	Fall Semester					5-year Change	
	2004	2005	2006	2007	2008	N	%
SFA Total	51	49	60	64	60	9	17.6
EDUCATION	36	38	46	44	42	6	16.7
<i>Secondary Education</i>	36	38	46	44	42	6	16.7
Educational Admin. and Super.	0	0	10	0	0	0	-
Educational Leadership	36	38	36	44	42	6	16.7
FORESTRY / AGRICULTURE	15	11	14	20	18	3	20.0
<i>Forestry</i>	15	11	14	20	18	3	20.0



Undergraduate Enrollment by Minor Fall Semesters 2004 - 2008

COLLEGE / Unit / Minor	Fall Semester					5-year Change	
	2004	2005	2006	2007	2008	N	%
SFA Total	1,488	1,985	2,302	2,402	2,390	902	60.6
BUSINESS	427	454	474	496	523	96	22.5
<i>Accounting</i>	5	28	21	10	13	8	160.0
<i>Computer Science</i>	15	16	16	24	33	18	120.0
Computer Information Systems	6	4	5	1	3	-3	-50.0
Computer Information Technology	0	0	1	10	19	19	-
Computer Science	9	12	10	13	11	2	22.2
<i>Economics / Finance</i>	9	18	20	27	28	19	211.1
Business Economics	1	0	1	3	1	0	0.0
Economics	3	8	7	9	13	10	333.3
Finance	5	10	12	15	14	9	180.0
<i>General Business</i>	288	272	263	276	273	-15	-5.2
Administrative Law	7	3	1	7	7	0	0.0
Business Communication	11	20	15	14	13	2	18.2
General Business	264	243	246	254	253	-11	-4.2
Office Systems	4	2	0	0	0	-4	-100.0
Petroleum Land Management	2	4	1	1	0	-2	-100.0
<i>Management / Marketing / Int. Business</i>	91	115	152	159	176	85	93.4
Electronic Business	9	6	4	5	0	-9	-100.0
Entrepreneurship	0	0	8	8	8	8	-
International Business	6	4	5	4	15	9	150.0
Management	30	47	53	51	49	19	63.3
Marketing	46	58	74	68	75	29	63.0
Sports Marketing	0	0	8	23	29	29	-
Pre-Business	18	5	2	0	0	-18	-100.0
Pre-Computer Information Systems	1	0	0	0	0	-1	-100.0



Stephen F. Austin State University

Undergraduate Enrollment by Minor Fall Semesters 2004 - 2008 (Continued)

COLLEGE / Unit / Minor	Fall Semester					5-year Change	
	2004	2005	2006	2007	2008	N	%
EDUCATION	219	307	376	415	465	246	112.3
<i>Elementary Education</i>	11	15	17	20	35	24	218.2
Early Childhood Education	10	14	15	19	34	24	240.0
Elementary Education	0	0	1	0	0	0	-
Reading Education	1	1	1	1	1	0	0.0
<i>Human Sciences</i>	59	101	130	143	140	81	137.3
Child Development / Family Living	14	17	30	25	28	14	100.0
Combination Sciences	0	0	0	21	14	14	-
Family / Consumer Sciences	4	6	13	4	14	10	250.0
Family Development	0	0	1	0	1	1	-
Fashion Merchandising	10	15	17	17	14	4	40.0
Food / Nutrition / Dietetics	12	38	44	58	53	41	341.7
Hospitality Administration	14	18	16	11	9	-5	-35.7
Interior Design	5	7	7	6	5	0	0.0
Interior Merchandising	0	0	2	1	2	2	-
<i>Human Services</i>	68	107	120	133	138	70	102.9
Addiction Studies	0	1	2	4	5	5	-
Communication Disorders*	3	2	6	4	3	0	0.0
Deaf & Hard of Hearing**	5	8	9	10	18	13	260.0
Early Intervention	11	16	24	31	21	10	-
Educational Interpreting	8	19	21	30	25	17	212.5
Orientation / Mobility	0	2	2	1	5	5	-
Rehabilitation Services	4	15	15	16	18	14	350.0
School Psychology	1	0	0	0	0	-1	-100.0
Special Education	36	42	41	37	43	7	19.4
Speech Pathology	0	2	0	0	0	0	-
<i>Kinesiology / Health Science</i>	81	84	108	119	125	44	54.3
Athletic Training	0	8	27	31	34	34	-
Dance	21	22	18	21	24	3	14.3
Health Science	5	7	11	13	25	20	400.0
Kinesiology	55	47	52	54	42	-13	-23.6
<i>Secondary Education</i>	0	0	1	0	27	27	-

* Formerly Speech/Hearing Therapy, ** Formerly Hearing Impaired



Undergraduate Enrollment by Minor
 Fall Semesters 2004 - 2008
 (Continued)

COLLEGE / Unit / Minor	Fall Semester					5-year Change	
	2004	2005	2006	2007	2008	N	%
FINE ARTS	87	122	153	156	143	56	64.4
<i>Art</i>	41	53	85	70	72	31	75.6
Art	39	52	84	69	72	33	84.6
Art History	1	0	1	1	0	-1	-100.0
Drawing	1	1	0	0	0	-1	-100.0
<i>Music</i>	26	42	45	62	50	24	92.3
Music	22	39	42	61	49	27	122.7
Music - Composition	1	0	0	0	0	-1	-100.0
Music Education	0	0	0	0	0	0	-
Music Performance	2	2	2	1	1	-1	-50.0
Music - Piano Pedagogy	1	1	1	0	0	-1	-100.0
Music - Voice	0	0	0	0	0	0	-
<i>Theatre</i>	20	27	23	24	21	1	5.0
FORESTRY / AGRICULTURE	25	46	50	54	49	24	96.0
<i>Agriculture</i>	13	26	29	26	19	6	46.2
Agribusiness	1	4	4	7	5	4	400.0
Agriculture Development	0	1	1	3	2	2	-
Agriculture Machinery	1	2	3	0	1	0	0.0
Agronomy	2	2	2	1	0	-2	-100.0
Animal Science	2	5	6	12	6	4	200.0
General Agriculture	4	2	2	0	0	-4	-100.0
Horticulture	2	9	4	3	3	1	50.0
International Agriculture	1	0	0	0	0	-1	-100.0
Poultry Science	0	1	4	0	0	0	-
Spatial Science	0	0	3	0	2	2	-
<i>Forestry</i>	12	20	21	28	30	18	150.0
Environmental Science	3	4	6	5	5	2	66.7
Forest Management	2	1	0	0	0	-2	-100.0
Forest Recreation Management	1	1	3	0	0	-1	-100.0
Forest Wildlife Management	4	5	5	9	8	4	100.0
Forestry	2	9	7	13	12	10	500.0
Geospatial Sciences	0	0	0	1	5	5	-



Stephen F. Austin State University

Undergraduate Enrollment by Minor Fall Semesters 2004 - 2008 (Continued)

COLLEGE / Unit / Minor	Fall Semester					5-year Change	
	2004	2005	2006	2007	2008	N	%
LIBERAL / APPLIED ARTS	542	757	833	831	771	229	42.3
<i>Applied Arts and Sciences</i>	0	2	6	4	2	2	-
Applied Arts and Sciences	0	0	0	0	1		-
Leadership	0	2	6	4	1	1	-
<i>Communication</i>	67	97	116	102	88	21	31.3
Communication	11	14	12	8	5	-6	-54.5
Communication Studies	0	0	23	29	30	30	-
General Communication	3	9	14	1	3	0	0.0
Journalism	16	34	35	40	28	12	75.0
Mass Communication	0	0	1	0	0	0	-
Radio / TV / Film	26	26	28	23	21	-5	-19.2
Speech Communication	11	14	3	1	1	-10	-90.9
<i>English / Philosophy</i>	82	106	120	143	127	45	54.9
African-American Literary Studies	0	0	2	9	2	2	-
Children's Literature	0	0	0	0	1	1	-
Classical Literary Studies	0	0	1	2	5	5	-
Creative Writing	0	4	21	24	34	34	-
English	46	47	47	33	29	-17	-37.0
Film Studies	0	0	7	24	17	17	-
Literature	0	0	3	11	11	11	-
Philosophy	8	17	15	16	10	2	25.0
Religious Studies	0	0	0	0	2	2	-
Writing	28	38	24	24	16	-12	-42.9
<i>Government</i>	63	90	90	81	86	23	36.5
Corrections	0	0	1	0	0	0	-
Criminal Justice	26	37	40	41	34	8	30.8
Law Enforcement	2	6	5	7	6	4	200.0
Legal Assistant	3	1	0	1	4	1	33.3
Political Science	25	40	41	27	30	5	20.0
Public Administration	7	6	3	5	12	5	71.4
<i>History</i>	48	75	71	76	79	31	64.6
<i>Military Science</i>	19	18	24	29	34	15	78.9
<i>Modern Language</i>	52	75	66	59	57	5	9.6
French	9	8	9	8	7	-2	-22.2
Spanish	43	67	57	51	50	7	16.3
<i>Psychology</i>	117	182	195	193	160	43	36.8
<i>Social Work</i>	1	0	0	1	0	-1	-100.0



Enrollment by Undergraduate Minor
Fall Semesters 2004 - 2008
(Continued)

COLLEGE / Unit / Minor	Fall Semester					5-year Change	
	2004	2005	2006	2007	2008	N	%
LIBERAL / APPLIED ARTS (continued)							
Sociology	77	99	115	110	103	26	33.8
Anthropology	3	10	10	13	17	14	466.7
Gender Studies	12	4	5	4	6	-6	-50.0
Geography	11	13	15	11	14	3	27.3
Geography with Urban Studies	0	0	1	1	0	0	-
Gerontology	0	3	1	1	3	3	-
Sociology	51	69	83	80	63	12	23.5
American Studies	1	3	4	3	6	5	500.0
Humanities	0	0	0	0	0	0	-
Interdisciplinary Studies	2	3	4	1	1	-1	-50.0
International Studies	11	5	10	17	12	1	9.1
Latin American Studies	2	0	12	11	14	12	600.0
Undecided	0	2	0	1	2	2	-
SCIENCES / MATHEMATICS	188	299	416	450	439	251	133.5
Biology	89	102	206	217	202	113	127.0
Biology	89	102	206	215	202	113	127.0
Biochemistry	0	0	0	2	0	0	-
Chemistry	14	25	34	35	28	14	100.0
Geology	11	22	22	21	13	2	18.2
Mathematics / Statistics	37	56	54	67	68	31	83.8
Applied Statistics	1	2	0	3	2	1	100.0
Mathematics	33	52	49	58	60	27	81.8
Statistics	3	2	5	6	6	3	100.0
Nursing	3	0	0	0	1	-2	-66.7
Physics / Astronomy	5	14	20	22	26	21	420.0
Astronomy	2	7	10	9	10	8	400.0
Engineering	0	1	2	5	5	5	-
Physics	3	5	5	6	9	6	200.0
Pre-Engineering	0	1	3	2	2	2	-
Combined Sciences	7	11	15	12	58	51	728.6
Combined Sciences / Mathematics	21	68	63	57	26	5	23.8
Pre-Medicine	0	0	1	10	6	6	-
Pre-Occupational Therapy	0	0	0	5	4	4	-
Pre-Pharmacy	0	0	0	0	2	2	-
Pre-Physical Therapy	1	1	0	4	4	3	300.0
Pre-Veterinary Medicine	0	0	1	0	1	1	-



Stephen F. Austin State University

Enrollment by Age
Headcount and Percentage
Fall Semesters 2004 - 2008

Age Group	2004		2005		2006		2007		2008	
	N	%	N	%	N	%	N	%	N	%
18 and under	1,638	14.5	1,874	16.4	2,174	18.5	2,156	18.6	2,337	19.5
19 - 21	4,533	40.2	4,543	39.7	4,575	38.9	4,732	40.8	5,063	42.2
22 - 24	2,487	22.0	2,511	22.0	2,462	20.9	2,337	20.1	2,223	18.5
25 - 30	1,248	11.1	1,138	10.0	1,186	10.1	1,131	9.7	1,122	9.4
31 & Up	1,381	12.2	1,369	12.0	1,359	11.6	1,251	10.8	1,245	10.4
Total	11,287		11,435		11,756		11,607		11,990	

Enrollment by Residence
Headcount and Percentage
Fall Semesters 2004 - 2008

Residence	2004		2005		2006		2007		2008	
	N	%	N	%	N	%	N	%	N	%
Texas	10,895	96.5	11,010	96.3	11,315	96.2	11,203	96.5	11,538	96.2
Out of State	297	2.6	307	2.7	295	2.5	247	2.1	270	2.3
Foreign	95	0.8	116	1.0	139	1.2	156	1.3	174	1.5
No Tuition	0	-	2	-	7	0.1	1	0.0	8	0.1
Total	11,287		11,433		11,756		11,607		11,990	



Enrollment by Texas County
2008 Top 20 Texas Counties Only
Sorted by 2008 Column
Fall Semesters 2004 - 2008

County	Headcount					% of Total from Top 20 Counties
	2004	2005	2006	2007	2008	
SFA Total*	11,287	11,435	11,756	11,607	11,990	
1. Harris	1,762	1,736	1,746	1,772	1,886	21.4
2. Nacogdoches	1,522	1,649	1,701	1,501	1,467	16.7
3. Dallas	701	725	758	859	992	11.3
4. Angelina	786	800	809	784	814	9.2
5. Tarrant	468	524	534	546	585	6.6
6. Fort Bend	299	318	372	403	375	4.3
7. Collin	227	243	303	308	353	4.0
8. Denton	200	205	200	226	257	2.9
9. Gregg	245	254	247	255	250	2.8
10. Montgomery	189	189	217	225	249	2.8
11. Smith	257	233	221	234	238	2.7
12. Shelby	243	234	240	224	212	2.4
13. Brazoria	135	132	134	151	169	1.9
14. Galveston	151	141	152	156	169	1.9
15. Rusk	179	171	173	147	167	1.9
16. Travis	174	165	169	157	145	1.6
18. Harrison	114	117	131	120	122	1.4
17. Williamson	121	118	119	129	122	1.4
19. Cherokee	152	142	129	125	119	1.4
20. Polk	122	115	103	107	114	1.3

Fall 2008 Total for Top 20 Texas Counties 8,805
Percent of SFA Total Enrollment 73.4%

Note: In fall 2007, SFA students came from 44 states outside Texas (292 students) and 53 foreign countries (196 students).

* Includes all students enrolled, regardless of residence.



Stephen F. Austin State University

Enrollment by East Texas County
 Sorted by 2008 Headcount
 Fall Semesters 2004 - 2008

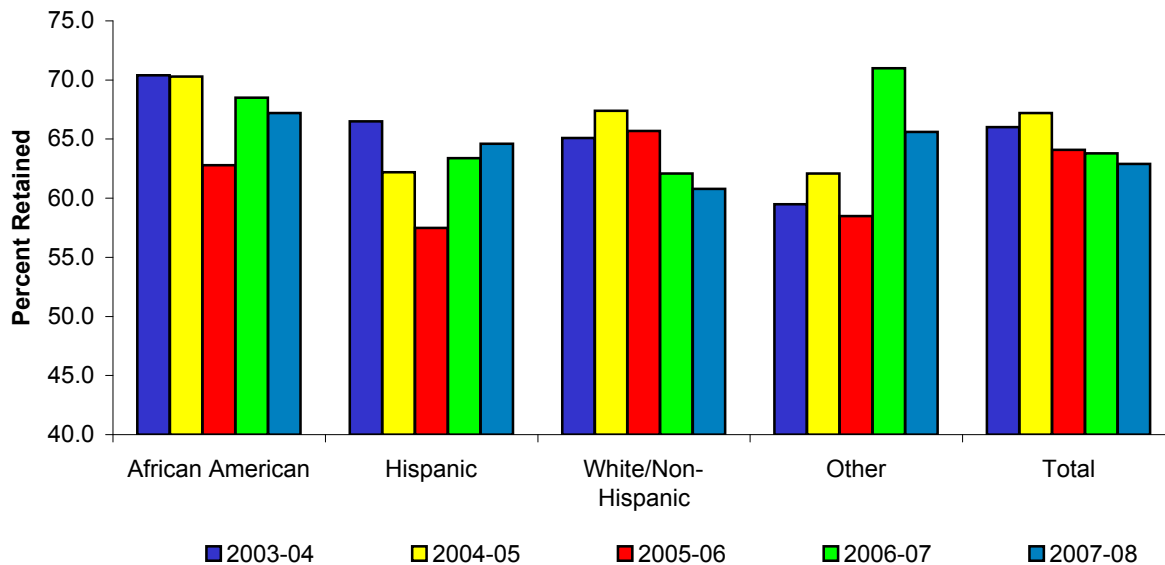
County	Headcount				
	2004	2005	2006	2007	2008
SFA Total	11,287	11,435	11,756	11,607	11,990
Nacogdoches	1,522	1,649	1,701	1,501	1,467
Angelina	786	800	809	784	814
Gregg	245	254	247	255	250
Smith	257	233	221	234	238
Shelby	243	234	240	224	212
Rusk	179	171	173	147	167
Harrison	114	117	131	120	122
Cherokee	152	142	129	125	119
Henderson	90	101	94	101	106
Panola	113	101	90	89	93
Anderson	63	52	60	71	91
Sabine	56	70	60	63	82
San Augustine	84	71	69	75	66
Upshur	66	54	55	62	55
Van Zandt	41	62	66	56	48
Wood	42	47	57	51	33
Rains	2	1	2	2	3
Total for East Texas Counties	4,055	4,159	4,204	3,960	3,966
Percent of SFA Total Enrollment	35.9%	36.4%	35.8%	34.1%	33.1%

Note: Counties listed are in Region 7 ('Immediate East Texas Area').



One-Year Retention Rates
 First-time Full-time Freshmen
 Percent Returning After One Year
 Fall Semesters of Entry 2003 - 2007

Ethnicity	2003-04	2004-05	2005-06	2006-07	2007-08
SFA Total	66.0	67.2	64.1	63.8	62.9
African American	70.4	70.3	62.8	68.5	67.2
Hispanic	66.5	62.2	57.5	63.4	64.6
White/Non-Hispanic	65.1	67.4	65.7	62.1	60.8
Other	59.5	62.1	58.5	71.0	65.6



Notes: Other = American Indian, Asian/Pacific Islander and non-resident aliens
 Values are calculated and reported in accordance with LBB and IPEDS definitions. (Includes first-time



Stephen F. Austin State University

First-time Freshmen by Semester and Gender Academic Years 2004 - 2008

Semester	2004-05			2005-06			2006-07			2007-08			2008-09		
	M	F	Total	M	F	Total	M	F	Total	M	F	Total	M	F	Total
SFA Fiscal Year	666	1,086	1,872	794	1,201	2,150	893	1,448	2,471	890	1,362	2,481	877	1,477	2,354
Fall	632	1,052	1,684	757	1,164	1,921	845	1,401	2,246	858	1,324	2,182	877	1,477	2,354
Spring	34	34	68	37	37	74	48	47	95	32	38	70			
Summer*			120			155			130			229			

* Unduplicated headcount for Summer I and II are shown. Separate values for men and women are unavailable.

First-time Freshmen Average ACT/SAT Scores SFA - Texas - National Norms Fall Semesters 1999 - 2008

Test Type	Group	1999	2000	2001	2002	2003	2004	2005	2006	2007	2008
ACT Total	SFA	20.6	20.4	20.2	20.2	20.6	20.9	20.6	20.5	20.5	20.5
	Texas	20.3	20.3	20.3	20.1	20.1	20.2	20.2	20.3	20.5	20.7
	National	21.0	21.0	21.0	20.8	20.8	20.9	20.9	21.1	21.2	21.1
SAT Total	SFA	981	982	969	971	1,000	999	1,005	992	990	982
	Texas	993	993	992	991	993	992	995	997	999	993
	National	1,016	1,019	1,020	1,020	1,026	1,026	1,028	1,021	1,017	1,017



First-time Full-time Freshmen by Ethnicity
Headcount and Percentage
Fall Semesters 2004 - 2008

Ethnicity	2004		2005		2006		2007		2008	
	N	%	N	%	N	%	N	%	N	%
SFA Total	1,666		1,897		2,200		2,163		2,310	
African American	256	15.4	346	18.2	456	20.7	525	24.3	647	28.0
American Indian	21	1.3	23	1.2	6	0.3	9	0.4	14	0.6
Asian/Pacific Islander	28	1.7	23	1.2	27	1.2	30	1.4	30	1.3
Hispanic	142	8.5	185	9.8	229	10.4	222	10.3	256	11.1
White/Non-Hispanic	1,213	72.8	1,306	68.8	1,455	66.1	1,355	62.6	1,333	57.7
Foreign	0	0.0	7	0.4	11	0.5	15	0.7	14	0.6
Unknown	6	0.4	7	0.4	16	0.7	7	0.3	16	0.7

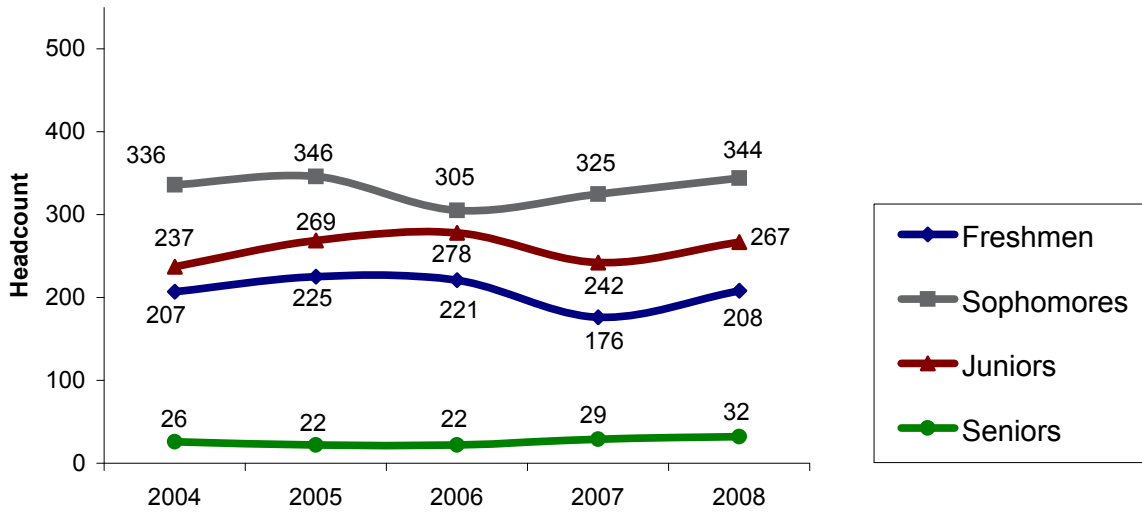
First-time Transfer Students by Ethnicity
Headcount and Percentage
Fall Semesters 2004 - 2008

Ethnicity	2004		2005		2006		2007		2008	
	N	%	N	%	N	%	N	%	N	%
SFA Total	813		869		837		777		860	
African American	89	10.9	111	12.8	115	13.7	107	13.8	145	16.9
American Indian	7	0.9	9	1.0	10	1.2	8	1.0	2	0.2
Asian/Pacific Islander	16	2.0	2	0.2	6	0.7	7	0.9	7	0.8
Hispanic	55	6.8	72	8.3	70	8.4	60	7.7	76	8.8
White/Non-Hispanic	620	76.3	651	74.9	603	72.0	563	72.5	597	69.4
Foreign	22	2.7	22	2.5	29	3.5	27	3.5	25	2.9
Unknown	4	0.2	2	0.1	4	0.2	5	0.6	8	0.9



Stephen F. Austin State University

First-time Undergraduate Transfer Students by Classification
Fall Semesters 2004 - 2008



First-time Undergraduate Transfer Students by Classification
Academic Years 2004 - 2008

Classification	2004-05			2005-06			2006-07			2007-08			2008
	Fall	Spring	Sum.*	Fall	Spring	Sum.*	Fall	Spring	Sum.*	Fall	Spring	Sum.*	Fall
SFA Total	806	328	236	862	350	181	826	332	160	772	320	187	851
Freshmen	207	93	99	225	94	72	221	90	58	176	82	80	208
Sophomores	336	137	63	346	146	53	305	126	45	325	120	39	344
Juniors	237	87	56	269	95	45	278	107	39	242	107	56	267
Seniors	26	11	18	22	15	11	22	9	18	29	11	12	32

* Combined totals for Summer I and II



Top 20 New Transfer Feeder Institutions
 Based on Fall 2008 Enrollments
 First-time Transfer and Returning Transfer Students
 Fall Semesters 2006 - 2008

Transfer Institution	2006			2007			2008		
	New	Return	Total	New	Return	Total	New	Return	Total
SFA Total In-state Transfers	690	113	803	643	112	755	734	116	850
Angelina College	129	39	168	125	39	164	126	37	163
Lone Star College	54	6	60	50	5	55	54	5	59
Tyler Junior College	48	2	50	47	6	53	52	5	57
Kilgore College	39	4	43	31	5	36	44	6	50
Panola Junior College	41	4	45	38	11	49	41	8	49
Dallas Co. Community College District	23	8	31	25	6	31	33	6	39
Blinn College	24	2	26	22	0	22	28	2	30
Collin County Community College	10	2	12	14	4	18	23	2	25
Tarrant County College District	22	1	23	13	5	18	22	2	24
Trinity Valley Community College	22	1	23	25	1	26	22	2	24
San Jacinto College - Central	13	3	16	14	1	15	20	2	22
Austin Community College	5	0	5	8	0	8	10	7	17
Houston Community College	15	5	20	9	4	13	10	3	13
Lon Morris College	9	1	10	10	0	10	11	2	13
Northeast Texas Community College	14	0	14	12	0	12	13	0	13
Hill College	4	1	5	6	1	7	12	0	12
Navarro College	18	0	18	22	0	22	12	0	12
Alvin Community College	1	0	1	6	0	6	9	2	11
Texas A&M University	7	1	8	3	0	3	9	2	11
Wharton County Junior College	9	1	10	8	1	9	12	0	12

Fall 2008 Total for Top Transfer Institutions
Percent of Total In-state Transfers

656
 77.2%



Stephen F. Austin State University

Average Class Size by Department Fall 2008

Special Notes Related to Average Class Size

- Lecture classes include lecture and seminar course types; lab classes include courses with 'L' naming
- Cross-listed courses are counted one time at the total enrollment value for all courses under the cross-listing (undergraduate and graduate cross-listings are counted as undergraduate on this report).
- Modern language labs, military science labs and SFA 101 classes are excluded.

COLLEGE/Unit	Lower Division		Upper Division		Graduate	
	Lecture	Lab	Lecture	Lab	Lecture	Lab
SFA Average Class Size: 27.5						
Average Class Size by Level	35.7	25.1	24.0	16.6	13.2	7.5
BUSINESS	39.5	-	28.0	-	18.9	-
Accounting	33.1	-	35.4	-	21.3	-
Computer Science	50.9	-	12.0	-	4.5	-
Economics / Finance	41.1	-	26.6	-	23.7	-
General Business	32.3	-	32.0	-	27.0	-
Management / Marketing / Int. Bus.	-	-	28.4	-	18.3	-
EDUCATION	31.2	43.6	26.3	17.5	13.6	7.5
Elementary Education	21.4	-	21.8	-	15.4	-
Human Sciences	47.2	43.6	36.8	13.3	8.2	-
Human Services	24.6	-	25.6	-	13.7	-
Kinesiology / Health Sciences	26.4	-	32.4	16.7	12.4	7.5
Secondary Education	-	-	22.9	21.0	13.9	-
FINE ARTS	39.3	17.2	22.8	27.0	10.8	-
Art	63.1	-	19.9	-	-	-
Music	38.3	-	23.1	-	10.8	-
Theatre	32.5	17.2	26.0	27.0	-	-
FORESTRY / AGRICULTURE	27.0	14.8	17.5	16.5	8.9	13.0
Agriculture	23.8	14.7	18.1	17.1	13.0	-
Environmental Science	36.5	14.8	14.3	14.0	6.4	-
Forestry	28.9	14.8	17.5	16.7	9.6	13.0
LIBERAL / APPLIED ARTS	34.3	21.0	24.4	18.8	15.6	-
Applied Arts / Sciences	17.0	-	-	-	-	-
Communication	31.0	21.0	22.8	19.5	10.3	-
Criminal Justice	25.9	-	29.0	-	-	-
English / Philosophy	24.8	-	23.1	-	11.6	-
History	51.9	-	21.6	-	11.0	-
Military Science	7.0	-	7.8	-	-	-
Modern Languages	19.0	-	18.2	-	-	-
Pol. Sci. / Geog. / Public Adm.	49.4	-	28.9	-	15.4	-
Psychology	78.4	-	32.7	18.0	4.8	-
Social Work	26.8	-	18.2	-	20.6	-
Sociology	48.5	-	30.9	-	24.0	-
SCIENCES / MATHEMATICS	41.6	27.8	17.5	14.0	6.5	5.4
Biology	64.1	36.2	23.4	15.8	-	3.3
Biotechnology	-	-	-	-	5.6	8.5
Chemistry	42.9	21.6	23.2	10.5	4.0	-
Geology	45.6	24.1	18.6	17.0	9.5	-
Mathematics / Statistics	34.2	-	15.9	-	7.7	-
Nursing	-	-	15.4	-	-	-
Physics	50.8	26.0	8.0	9.0	3.0	-