



Headcount Data

Table of Contents

Enrollment by Full-time, Part-time and FTE 2

Enrollment by Classification and Gender 2

Enrollment by Semester and Gender 2

Enrollment by Classification and Course Load 3

Enrollment by Classification and Course Load Chart 3

Enrollment by Classification Chart 4

Enrollment by Classification 4

Enrollment by Level Charts 5

Enrollment by Ethnicity and Classification 6

Top 15 Undergraduate Majors 7

Total Enrollment by Level and College 8

Total Enrollment by Major 9

Undergraduate Enrollment by Major 14

Graduate-Master and Post-baccalaureate Enrollment by Major 19

Graduate-Doctoral Enrollment by Major 24

Undergraduate Enrollment by Minor 25

Enrollment by Age 30

Enrollment by Residence 30

Enrollment by Texas County 31

Enrollment by East Texas County 32

One-Year Retention Rates 33

One-Year Retention Rates Chart 33

First-time Freshmen by Semester and Gender 34

First-time Freshmen Average ACT/SAT Scores 34

First-time Full-time Freshmen by Ethnicity 35

First-time Transfer Students by Ethnicity 35

First-time Undergraduate Transfer Students by Classification Chart 36

First-time Undergraduate Transfer Students by Classification 36

Top 20 New Transfer Feeder Institutions 37

Average Class Size by Department 38



Stephen F. Austin State University

Enrollment by Full-time, Part-time and FTE Fall Semesters 2006 -2010

Total	Fall Semester					5-year Change	
	2006	2007	2008	2009	2010	N	%
SFA Headcount	11,756	11,607	11,990	12,845	12,954	1,198	10.2
Full-time Headcount	9,439	9,441	9,690	10,307	10,193	754	8.0
Part-time Headcount	2,317	2,166	2,300	2,538	2,761	444	19.2
Full-time Equivalent (FTE)	9,940	9,880	10,101	10,706	10,593	653	6.6

Enrollment by Classification and Gender Full-time and Part-time Fall 2010

Classification	Full-Time			Part-Time			Total		Grand Total
	M	F	Total	M	F	Total	M	F	
SFA Total	3,889	6,304	10,193	1,033	1,728	2,761	4,922	8,032	12,954
Freshmen	1,284	2,079	3,363	175	237	412	1,459	2,316	3,775
Sophomores	804	1,217	2,021	102	152	254	906	1,369	2,275
Juniors	778	1,275	2,053	90	192	282	868	1,467	2,335
Seniors	781	1,337	2,118	291	475	766	1,072	1,812	2,884
Total Undergraduates	3,647	5,908	9,555	658	1,056	1,714	4,305	6,964	11,269
Post-baccalaureates	36	35	71	50	95	145	86	130	216
Master's students	190	334	524	309	556	865	499	890	1,389
Doctoral students	16	27	43	16	21	37	32	48	80
Total Graduates	242	396	638	375	672	1,047	617	1,068	1,685

Enrollment by Semester and Gender Academic Years 2006 - 2010

Semester	2005-2006			2006-2007			2007-2008			2008-2009			2009-2010		
	M	F	Total	M	F	Total	M	F	Total	M	F	Total	M	F	Total
Fall	4,509	6,926	11,435	4,649	7,107	11,756	4,596	7,011	11,607	4,715	7,275	11,990	4,923	7,922	12,845
Spring	4,237	6,391	10,628	4,283	6,539	10,822	4,221	6,427	10,648	4,405	6,821	11,226	4,639	7,390	12,029
Summer*	2,202	3,295	5,497	2,083	3,209	5,292	2,151	3,355	5,506	2,213	3,491	5,704	2,299	3,561	5,860

* Combined totals for Summer I and II, unduplicated headcount.

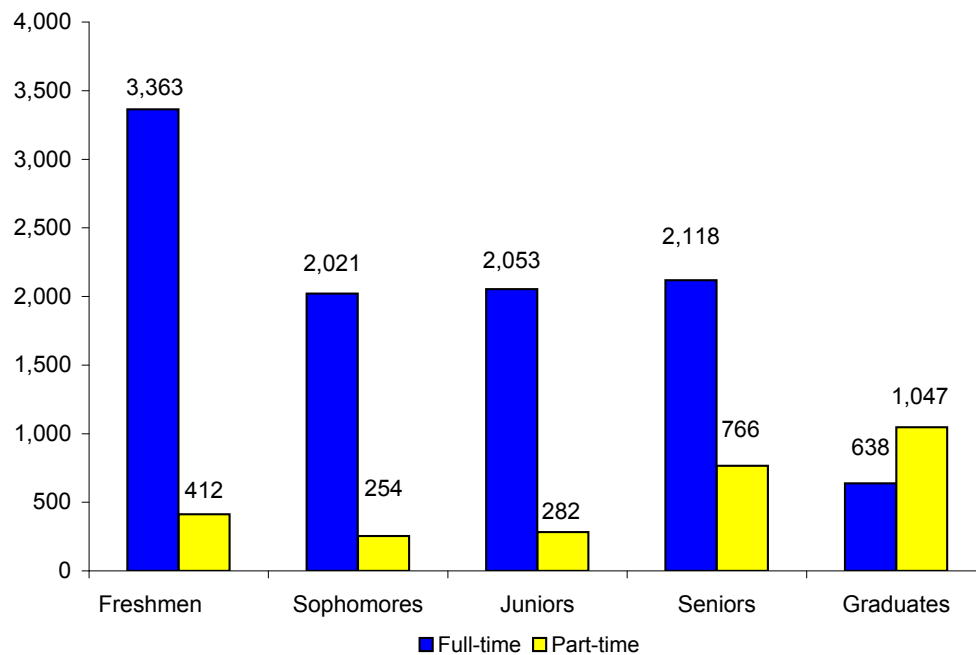


Enrollment by Classification and Course Load Fall Semesters 2006 - 2010

Classification	2006		2007		2008		2009		2010	
	FT	PT	FT	PT	FT	PT	FT	PT	FT	PT
SFA Total	9,439	2,317	9,441	2,166	9,690	2,300	10,307	2,538	10,193	2,761
Freshmen	3,160	264	3,177	219	3,386	235	3,562	362	3,363	412
Sophomores	1,631	231	1,784	204	1,842	210	1,953	202	2,021	254
Juniors	2,162	265	1,974	281	1,868	247	2,011	264	2,053	282
Seniors	1,865	580	1,900	567	1,953	663	2,137	653	2,118	766
Graduates	621	977	606	895	641	945	644	1,057	638	1,047

FT = Full-time; PT = Part-time

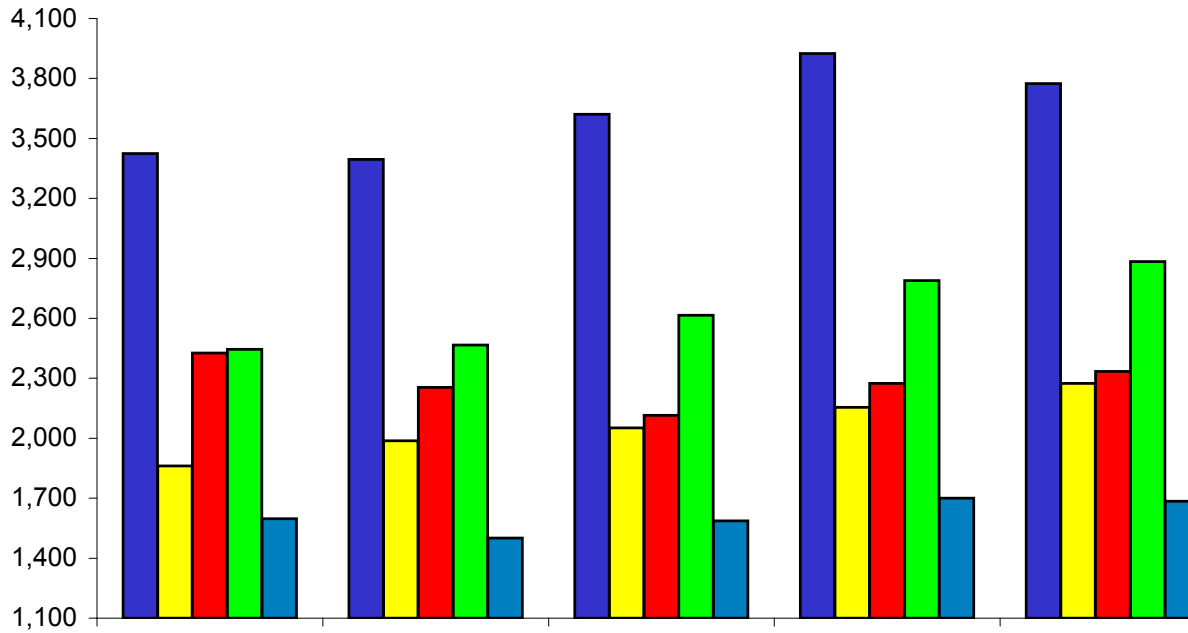
Enrollment by Classification and Course Load Chart Fall Semesters 2006- 2010





Stephen F. Austin State University

Enrollment by Classification Chart
Fall Semesters 2006 - 2010

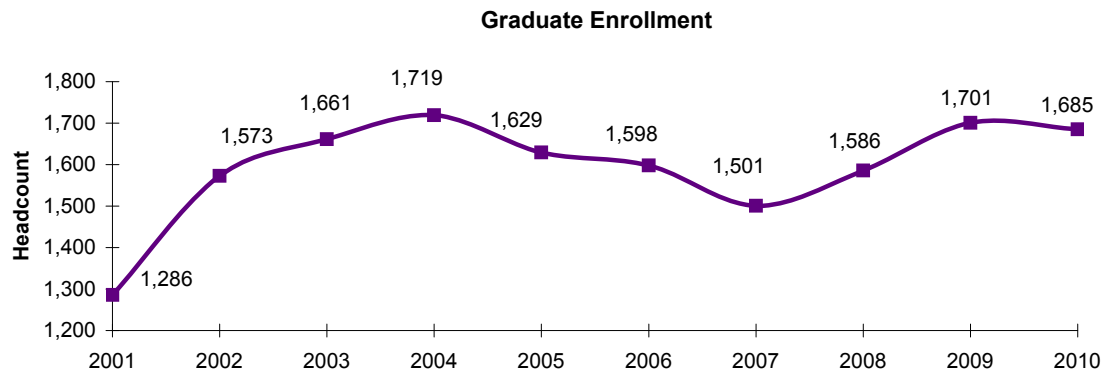
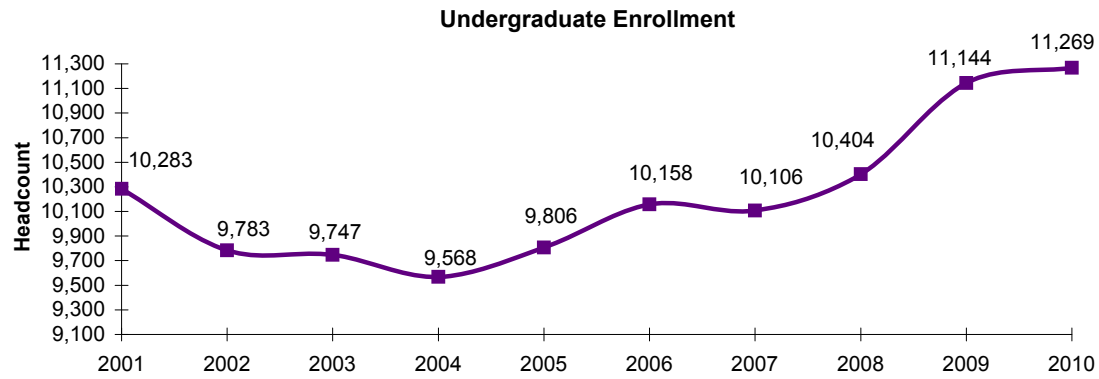


Enrollment by Classification
Fall Semesters 2006- 2010

Classification	2006	2007	2008	2009	2010
SFA Total	11,756	11,607	11,990	12,845	12,954
Freshmen	3,424	3,396	3,621	3,925	3,775
Sophomores	1,862	1,988	2,052	2,155	2,275
Juniors	2,427	2,255	2,115	2,275	2,335
Seniors	2,445	2,467	2,616	2,789	2,884
Graduates	1,598	1,501	1,586	1,701	1,685



Enrollment by Level Charts Fall Semesters 2001 - 2010





Stephen F. Austin State University

Enrollment by Ethnicity and Classification Headcount and Percentage Fall Semesters 2006 - 2010

Year/Ethnicity	Freshmen	Sophomores	Juniors	Seniors	Graduates	Total	Percent
2006							
African American	735	303	350	405	158	1,951	16.6
American Indian	28	21	12	21	11	93	0.8
Asian/Pacific Islander	34	24	24	25	15	122	1.0
Hispanic	337	163	171	202	77	950	8.1
White/Non-Hispanic	2,233	1,337	1,844	1,782	1,252	8,448	71.9
Foreign	35	9	16	5	82	147	1.3
Unknown	22	5	10	5	3	45	0.4
TOTAL	3,424	1,862	2,427	2,445	1,598	11,756	
2007							
African American	873	341	326	346	165	2,051	17.7
American Indian	17	22	14	19	10	82	0.7
Asian/Pacific Islander	42	29	27	26	13	137	1.2
Hispanic	349	156	185	202	85	977	8.4
White/Non-Hispanic	2,061	1,410	1,682	1,847	1,152	8,152	70.2
Foreign	38	19	12	20	70	159	1.4
Unknown	16	11	9	7	6	49	0.4
TOTAL	3,396	1,988	2,255	2,467	1,501	11,607	
2008							
African American	1,051	453	345	375	203	2,427	20.2
American Indian	23	8	16	20	12	79	0.7
Asian/Pacific Islander	48	23	25	37	14	147	1.2
Hispanic	386	191	182	209	93	1,061	8.8
White/Non-Hispanic	2,031	1,354	1,514	1,944	1,181	8,024	66.9
Foreign	54	14	16	21	75	180	1.5
Unknown	28	9	17	10	8	72	0.6
TOTAL	3,621	2,052	2,115	2,616	1,586	11,990	
2009							
African American	1,217	508	437	431	237	2,830	22.0
American Indian	28	7	16	18	15	84	0.7
Asian/Pacific Islander	49	26	20	33	22	150	1.2
Hispanic	411	266	222	241	80	1,220	9.5
White/Non-Hispanic	2,123	1,311	1,551	2,024	1,280	8,289	64.5
Foreign	45	24	18	23	61	171	1.3
Unknown	51	13	11	20	6	101	0.8
TOTAL	3,924	2,155	2,275	2,790	1,701	12,845	
2010							
Hispanic Ethnicity	382	213	244	272	87	1,198	9.2
Non-Hispanic Ethnicity, Single Race Reported							
American Indian	23	14	11	16	20	84	0.6
Asian	30	23	27	23	23	126	1.0
Black or African American	1,148	593	459	507	223	2,930	22.6
Native Hawaiian/ Pac. Islander	1	0	0	0	0	1	0.0
White	1,926	1,355	1,520	2,017	1,254	8,072	62.3
Two or More Races Reported	57	5	2	1	3	68	0.5
Unknown, Race Not Reported	175	52	46	20	19	312	2.4
International, All Races & Ethnicities	33	20	26	28	56	163	1.3
TOTAL	3,775	2,275	2,335	2,884	1,685	12,954	100.0

Note: Percentages may not total 100.0 due to rounding.

New federally-mandated race and ethnicity reporting began in Fall 2010. Due to the new reporting guidelines, race and ethnicity data assumptions are inappropriate.



Top 15 Undergraduate Majors
 Fall 2010
 (Sorted by Percent of Total UG Enrollment)

Major	College	Headcount	Percent of College UG Enrollment	Percent of Total UG Enrollment
Interdisciplinary Studies	Education	1,344	41.6	11.9
Nursing	Sciences & Mathematics	1,082	54.5	9.6
Kinesiology	Education	740	22.9	6.6
Psychology	Liberal & Applied Arts	438	14.7	3.9
General Business	Business	362	20.2	3.2
Biology	Sciences & Mathematics	333	16.8	3.0
Music	Fine Arts	333	43.0	3.0
Marketing	Business	282	15.7	2.5
Law Enforcement	Liberal & Applied Arts	270	9.1	2.4
Art	Fine Arts	257	33.2	2.3
Management	Business	234	13.0	2.1
Child Development & Fam. Living	Education	192	5.9	1.7
History	Liberal & Applied Arts	192	6.5	1.7
English	Liberal & Applied Arts	186	6.3	1.7
Hospitality Administration	Education	172	5.3	1.5
Top 15 Majors	Total	6,417		56.9



Stephen F. Austin State University

Total Enrollment by Level and College Headcount and Percentage Fall Semesters 2006- 2010

Total by Level

	2006	2007	2008	2009	2010		5-year Change	
	N	N	N	N	N	%	N	%
SFA Total	11,756	11,607	11,990	12,845	12,954		1,198	10.2
Undergraduate	10,158	10,106	10,404	11,144	11,269	87.0	1,111	10.9
Graduate-Master & Post Bac.	1,538	1,437	1,526	1,639	1,605	12.4	67	4.4
Graduate-Doctoral	60	64	60	62	80	0.6	20	33.3

Total by College

College	2006	2007	2008	2009	2010		5-year Change	
	N	N	N	N	N	%	N	%
Business	1,880	1,931	2,015	2,006	1,923	14.8	43	2.3
Education	3,429	3,360	3,524	3,933	4,013	31.0	584	17.0
Fine Arts	792	758	820	852	868	6.7	76	9.6
Forestry / Agriculture	642	648	661	669	667	5.1	25	3.9
Liberal and Applied Arts	3,094	2,973	3,107	3,298	3,301	25.5	207	6.7
Sciences / Mathematics	1,919	1,937	1,863	2,087	2,182	16.8	263	13.7

Undergraduate by College

College	2006	2007	2008	2009	2010		5-year Change	
	N	N	N	N	N	%	N	%
Business	1,774	1,834	1,898	1,873	1,796	13.9	22	1.2
Education	2,561	2,521	2,674	3,046	3,228	24.9	667	26.0
Fine Arts	730	704	749	783	774	6.0	44	6.0
Forestry / Agriculture	521	533	528	523	515	4.0	-6	-1.2
Liberal and Applied Arts	2,865	2,743	2,831	2,993	2,972	22.9	107	3.7
Sciences / Mathematics	1,707	1,771	1,724	1,926	1,984	15.3	277	16.2

Graduate-Master and Post-baccalaureate by College

College	2006	2007	2008	2009	2010		5-year Change	
	N	N	N	N	N	%	N	%
Business	106	97	117	133	127	1.0	21	19.8
Education	822	795	808	839	720	5.6	-102	-12.4
Fine Arts	62	54	71	69	94	0.7	32	51.6
Forestry / Agriculture	107	95	115	132	137	1.1	30	28.0
Liberal and Applied Arts	229	230	276	305	329	2.5	100	43.7
Sciences / Mathematics	212	166	139	161	198	1.5	-14	-6.6

Graduate-Doctoral by College

College	2006	2007	2008	2009	2010		5-year Change	
	N	N	N	N	N	%	N	%
Education	46	44	42	48	65	0.5	19	41.3
Forestry / Agriculture	14	20	18	14	15	0.1	1	7.1



Total Enrollment by Major
Fall Semesters 2006- 2010

COLLEGE / Unit / Major	Fall Semester					5-year Change	
	2006	2007	2008	2009	2010	N	%
SFA Total	11,756	11,607	11,990	12,845	12,954	1,198	10.2
BUSINESS	1,880	1,931	2,015	2,006	1,923	43	2.3
Accounting	312	351	391	405	377	65	20.8
Accounting	60	115	170	184	188	128	213.3
Pre-Accounting	97	77	31	2	0	-97	-100.0
Professional Accountancy	155	159	190	219	189	34	21.9
Computer Science	139	175	166	193	199	60	43.2
Computer Information Systems	49	52	57	59	52	3	6.1
Computer Science	85	121	95	106	96	11	12.9
Information Technology	0	0	13	28	51	51	-
Pre-Computer Information Systems	5	2	1	0	0	-5	-100.0
Economics / Finance	204	208	230	197	222	18	8.8
Business Economics	8	17	39	47	58	50	625.0
Economics	13	11	12	14	14	1	7.7
Finance	95	109	157	134	150	55	57.9
Pre-Business Economics	50	36	8	0	0	-50	-100.0
Pre-Finance	38	35	14	2	0	-38	-100.0
General Business	429	448	442	403	398	-31	-7.2
General Business	283	350	430	402	398	115	40.6
Office Systems	1	0	0	0	0	-1	-100.0
Pre-General Business	145	98	12	1	0	-145	-100.0
Management / Marketing. / Int. Business	620	625	659	663	633	13	2.1
International Business	59	70	84	83	96	37	62.7
Management	188	208	240	243	254	66	35.1
Marketing	158	189	291	325	283	125	79.1
Pre-International Business	37	27	11	3	0	-37	-100.0
Pre-Management	71	46	10	2	0	-71	-100.0
Pre-Marketing	107	85	23	7	0	-107	-100.0
Pre-Business	171	110	67	4	0	-171	-100.0
Transient Student	0	0	1	0	0	0	-
Undecided BUSINESS	5	14	59	141	94	89	1780.0

Note: Variations in enrollments by department are partially due to reporting changes for pre-business majors.



Stephen F. Austin State University

Total Enrollment by Major
Fall Semesters 2006- 2010
(Continued)

COLLEGE / Unit / Major	Fall Semester					5-year Change	
	2006	2007	2008	2009	2010	N	%
EDUCATION	3,429	3,360	3,524	3,933	4,013	584	17.0
<i>Elementary Education</i>	1,266	1,225	1,228	1,403	1,463	197	15.6
Early Childhood Education	5	8	8	17	13	8	160.0
Elementary Education	152	150	163	140	105	-47	-30.9
Interdisciplinary Studies	1,109	1,067	1,057	1,246	1,345	236	21.3
<i>Human Sciences</i>	580	511	624	751	785	205	35.3
Child Development / Family Living	75	68	112	179	192	117	156.0
Family / Consumer Sciences	67	42	71	37	64	-3	-4.5
Fashion Merchandising	112	100	100	100	103	-9	-8.0
Food / Nutrition / Dietetics	61	47	63	78	80	19	31.1
Hospitality Administration	142	143	165	180	172	30	21.1
Human Sciences	0	0	0	58	67	67	-
Interior Design	117	100	100	111	99	-18	-15.4
Interior Merchandising	6	11	13	8	8	2	33.3
<i>Human Services</i>	422	426	462	503	490	68	16.1
Communication Disorders	107	110	137	147	145	38	35.5
Counseling	2	2	0	0	0	-2	-100.0
Counseling - Community	20	25	28	21	20	0	0.0
Counseling - Rehabilitation	7	9	10	6	9	2	28.6
Counseling - School	29	32	39	46	41	12	41.4
Deaf & Hard of Hearing	94	84	70	67	76	-18	-19.1
Orientation / Mobility	11	13	13	13	10	-1	-9.1
Rehabilitation Services	19	21	23	27	29	10	52.6
School Psychology	10	10	10	17	29	19	190.0
Special Education	83	79	91	123	95	12	14.5
Speech Language Pathology	40	41	41	36	36	-4	-10.0
<i>Kinesiology / Health Science</i>	695	757	803	856	932	237	34.1
Athletic Training	14	15	15	15	19	5	35.7
Dance	33	32	40	43	44	11	33.3
Health Science	109	116	102	91	91	-18	-16.5
Kinesiology	539	594	646	707	778	239	44.3
<i>Secondary Education</i>	374	362	350	343	264	-110	-29.4
Educational Admin. And Supervision	10	0	0	0	0	-10	-100.0
Educational Leadership	224	258	252	243	180	-44	-19.6
School Supervision	2	0	0	0	0	-2	-100.0
Secondary Education (General)	138	104	98	100	84	-54	-39.1
Transient Student	0	0	1	0	1	1	-
Undecided EDUCATION	92	79	56	77	78	-14	-15.2



Total Enrollment by Major
Fall Semesters 2006- 2010
(Continued)

COLLEGE / Unit / Major	Fall Semester					5-year Change	
	2006	2007	2008	2009	2010	N	%
FINE ARTS	792	758	820	852	868	76	9.6
Art	271	253	265	279	300	29	10.7
Art	253	236	247	267	283	30	11.9
Art Education	0	0	0	0	6	6	-
Art History	18	17	18	12	11	-7	-38.9
Music	336	325	363	372	393	57	17.0
Music	307	298	325	336	345	38	12.4
Music Conducting	4	4	7	5	11	7	175.0
Music Education	11	10	15	18	21	10	90.9
Music Performance	14	13	16	13	16	2	14.3
Theatre	176	171	180	193	164	-12	-6.8
Undecided FINE ARTS	9	9	12	8	11	2	22.2
FORESTRY / AGRICULTURE	674	680	661	669	667	-7	-1.0
Agriculture	264	287	277	265	248	-16	-6.1
Agriculture Business	34	36	35	33	33	-1	-2.9
Agriculture Development	24	17	17	15	8	-16	-66.7
Agriculture Development Production	14	22	20	18	22	8	57.1
Agriculture Machinery	14	11	9	13	19	5	35.7
Agronomy	3	2	2	4	0	-3	-100.0
Animal Science	74	92	93	95	98	24	32.4
General Agriculture	34	36	37	39	29	-5	-14.7
General Agriculture (Pre-Vet.)	20	12	22	12	0	-20	-100.0
Horticulture	24	36	28	23	21	-3	-12.5
Poultry Science	23	23	14	13	18	-5	-21.7
Environmental Science	92	92	98	98	102	10	10.9
Forestry	315	298	277	298	299	-16	-5.1
Forest Management	28	21	26	18	17	-11	-39.3
Forest Range Management	1	1	1	0	0	-1	-100.0
Forest Recreation Management	17	13	12	15	18	1	5.9
Forest Wildlife Management	127	117	107	122	126	-1	-0.8
Forestry	88	92	90	85	82	-6	-6.8
Resource Interpretation	49	50	37	43	36	-13	-26.5
Spatial Science	5	4	4	15	20	15	300.0
Transient Student	0	1	0	1	1	1	-
Undecided FORESTRY / AGRICULTURE	3	2	9	7	17	14	466.7



Stephen F. Austin State University

Total Enrollment by Major
Fall Semesters 2006- 2010
(Continued)

COLLEGE / Unit / Major	Fall Semester					5-year Change	
	2006	2007	2008	2009	2010	N	%
LIBERAL / APPLIED ARTS	3,094	2,973	3,107	3,298	3,301	207	6.7
Applied Arts / Sciences	168	124	103	89	69	-99	-58.9
Applied Arts & Sciences	149	122	100	86	69	-80	-53.7
Career / Self Improvement	19	2	3	3	0	-19	-100.0
Communication & Contemporary Culture	558	499	500	507	464	-94	-16.8
Communication	0	0	23	26	24	24	-
Communication Studies	86	88	101	119	105	19	22.1
General Communication	28	24	0	0	0	-28	-100.0
Journalism	211	165	168	152	151	-60	-28.4
Philosophy	4	7	8	11	13	9	225.0
Radio/ TV	229	215	200	199	171	-58	-25.3
English	203	202	222	249	267	64	31.5
American English Language Institute	0	0	1	2	0	0	-
Creative Writing	9	22	29	42	66	57	633.3
English	194	180	192	205	201	7	3.6
Government	497	476	517	564	610	113	22.7
Corrections	36	24	27	42	53	17	47.2
Criminal Justice	84	73	0	0	0	-84	-100.0
Law Enforcement	152	140	224	252	271	119	78.3
Legal Assistant	33	32	42	56	58	25	75.8
Political Science	160	161	157	149	165	5	3.1
Public Administration	32	46	67	65	63	31	96.9
History	210	216	233	236	223	13	6.2
Modern Language	43	47	46	43	46	3	7.0
French	6	11	12	12	10	4	66.7
Spanish	37	36	34	31	36	-1	-2.7
Psychology	401	413	396	428	455	54	13.5
Social Work	237	248	283	291	304	67	28.3
Pre-Social Work	100	82	82	107	102	2	2.0
Social Work	137	166	201	184	202	65	47.4
Social & Cultural Analysis	86	87	107	110	97	11	12.8
Geography	12	18	16	15	21	9	75.0
Gerontology	5	3	5	5	3	-2	-40.0
Sociology	69	66	86	90	73	4	5.8
Concurrent / Not Designated	106	96	98	186	213	107	100.9
Humanities	0	0	0	0	0	0	-
Interdisciplinary Studies	35	29	26	44	34	-1	-2.9
Liberal Studies	28	33	33	35	38	10	35.7
Pre-program	0	0	0	1	0	0	-
Provisional Admission	0	0	1	0	0	0	-
Transient Students	3	4	1	3	2	-1	-33.3
Undecided LIBERAL / APPLIED ARTS	519	499	541	512	479	-40	-7.7



Total Enrollment by Major
Fall Semesters 2006- 2010
(Continued)

COLLEGE / Unit / Major	Fall Semester					5-year Change	
	2006	2007	2008	2009	2010	N	%
SCIENCES / MATHEMATICS	1,887	1,905	1,863	2,087	2,182	295	15.6
<i>Biology</i>	272	358	330	324	353	81	29.8
<i>Biotechnology</i>	50	37	36	28	33	-17	-34.0
<i>Chemistry</i>	50	78	91	104	118	68	136.0
Chemistry	44	55	46	50	53	9	20.5
Biochemistry	6	23	45	54	65	59	983.3
<i>Geology</i>	66	75	89	91	89	23	34.8
<i>Mathematics / Statistics</i>	135	129	128	135	130	-5	-3.7
Mathematics	101	101	116	126	121	20	19.8
Statistics	6	6	10	9	6	0	0.0
Mathematics Teaching	28	22	2	0	3	-25	-89.3
<i>Natural Science</i>	1	0	1	31	21	20	2000.0
<i>Nursing</i>	782	852	887	985	1,110	328	41.9
<i>Physics / Astronomy</i>	71	85	75	70	100	29	40.8
Physics	71	85	75	70	100	29	40.8
<i>Preprofessional</i>	437	251	195	245	127	-310	-70.9
Pre-Dental Hygiene	6	4	0	0	-	-	-
Pre-Dentistry	38	24	15	27	-	-	-
Pre-Engineering	44	52	49	58	-	-	-
Pre-Health Info. Management	1	0	0	0	-	-	-
Pre-Medical Technology	5	0	0	0	-	-	-
Pre-Medicine	160	94	64	78	-	-	-
Pre-Occupational Therapy	10	2	2	1	-	-	-
Pre-Optometry	8	1	1	5	-	-	-
Pre-Pharmacy	66	24	28	32	-	-	-
Pre-Physical Therapy	59	38	30	26	-	-	-
Pre-Physician's Assistant	18	5	2	3	-	-	-
Pre-Professional Biology	3	1	1	1	-	-	-
Pre-Veterinary Medicine	13	5	3	14	-	-	-
Undecided Preprofessional	6	1	0	0	-	-	-
Transient Students	0	1	0	0	1	1	-
Undecided SCIENCES / MATHEMATICS	23	39	31	74	100	77	334.8

Note: The Preprofessional program changed procedures for determining and classifying individuals enrolled in the programs.



Stephen F. Austin State University

Undergraduate Enrollment by Major Fall Semesters 2006- 2010

COLLEGE / Unit / Major	Fall Semester					5-year Change	
	2006	2007	2008	2009	2010	N	%
SFA Total	10,158	10,106	10,404	11,144	11,269	1,111	10.9
BUSINESS	1,774	1,834	1,898	1,873	1,796	22	1.2
Accounting	273	308	340	345	316	43	15.8
Accounting	55	106	159	164	160	105	190.9
Pre-Accounting	97	77	31	2	0	-97	-100.0
Professional Accountancy	121	125	150	179	156	35	28.9
Computer Science	131	165	158	187	193	62	47.3
Computer Information Systems	49	52	57	59	52	3	6.1
Computer Science	77	111	87	101	90	13	16.9
Pre-Computer Information Systems	5	2	1	0	0	-5	-100.0
Information Technology	0	0	13	27	51	51	-
Economics / Finance	204	208	229	195	220	16	7.8
Business Economics	8	17	39	47	57	49	612.5
Economics	13	11	12	13	13	0	0.0
Finance	95	109	156	133	150	55	57.9
Pre-Business Economics	50	36	8	0	0	-50	-100.0
Pre-Finance	38	35	14	2	0	-38	-100.0
General Business	384	417	406	363	362	-22	-5.7
General Business	239	319	394	362	362	123	51.5
Office Systems	1	0	0	0	0	-1	-100.0
Pre-General Business	144	98	12	1	0	-144	-100.0
Management / Marketing / Int. Business	611	612	641	639	612	1	0.2
International Business	59	70	84	83	96	37	62.7
Management	179	195	223	219	234	55	30.7
Marketing	158	189	290	325	282	124	78.5
Pre-International Business	37	27	11	3	0	-37	-100.0
Pre-Management	71	46	10	2	0	-71	-100.0
Pre-Marketing	107	85	23	7	0	-107	-100.0
Pre-Business	171	110	67	4	0	-171	-100.0
Transient Student	0	0	1	0	0	0	-
Undecided BUSINESS	0	14	56	140	93	93	-

Note: Variations in enrollments by department are partially due to reporting changes for pre-business majors.



Undergraduate Enrollment by Major
Fall Semesters 2006- 2010
(Continued)

COLLEGE / Unit / Major	Fall Semester					5-year Change	
	2006	2007	2008	2009	2010	N	%
EDUCATION	2,561	2,521	2,674	3,046	3,228	667	26.0
<i>Elementary Education</i>	1,107	1,065	1,056	1,245	1,344	237	21.4
Interdisciplinary Studies	1,107	1,065	1,056	1,245	1,344	237	21.4
<i>Human Sciences</i>	539	484	581	690	714	175	32.5
Child Development / Family Living	75	68	111	178	192	117	156.0
Family / Consumer Sciences	30	17	32	36	64	34	113.3
Fashion Merchandising	112	100	100	100	103	-9	-8.0
Food / Nutrition / Dietetics	60	47	63	77	79	19	31.7
Hospitality Administration	140	142	164	180	172	32	22.9
Interior Design	116	99	98	111	96	-20	-17.2
Interior Merchandising	6	11	13	8	8	2	33.3
<i>Human Services</i>	227	226	243	246	253	26	11.5
Communication Disorders	105	110	137	140	140	35	33.3
Deaf & Hard of Hearing	92	82	70	67	75	-17	-18.5
Orientation / Mobility	11	13	13	13	10	-1	-9.1
Rehabilitation Services	19	21	23	26	28	9	47.4
<i>Kinesiology / Health Science</i>	650	706	750	800	874	224	34.5
Dance	33	32	40	43	44	11	33.3
Health Science	109	116	102	91	90	-19	-17.4
Kinesiology	508	558	608	666	740	232	45.7
Transient Student	0	0	1	0	1	1	-
Undecided EDUCATION	38	40	43	65	42	4	10.5



Stephen F. Austin State University

Undergraduate Enrollment by Major Fall Semesters 2006- 2010 (Continued)

COLLEGE / Unit / Major	Fall Semester					5-year Change	
	2006	2007	2008	2009	2010	N	%
FINE ARTS	730	704	749	783	774	44	6.0
<i>Art</i>	242	230	237	253	268	26	10.7
Art	224	213	219	241	257	33	14.7
Art History	18	17	18	12	11	-7	-38.9
<i>Music</i>	305	296	322	332	333	28	9.2
Music	305	296	322	332	333	28	9.2
<i>Theatre</i>	176	171	180	191	164	-12	-6.8
<i>Undecided FINE ARTS</i>	7	7	10	7	9	2	28.6
FORESTRY / AGRICULTURE	521	533	528	523	515	-6	-1.2
<i>Agriculture</i>	246	272	261	245	230	-16	-6.5
Agriculture Business	34	36	35	33	33	-1	-2.9
Agriculture Development	24	17	17	15	8	-16	-66.7
Agriculture Development Production	14	22	20	18	22	8	57.1
Agriculture Machinery	14	11	9	13	19	5	35.7
Agronomy	3	2	2	4	0	-3	-100.0
Animal Science	74	92	93	95	98	24	32.4
Horticulture	24	36	28	23	21	-3	-12.5
General Agriculture	17	22	21	19	11	-6	-35.3
General Agriculture (Pre-Vet.)	20	12	22	12	0	-20	-100.0
Poultry Science	22	22	14	13	18	-4	-18.2
<i>Environmental Science</i>	60	60	67	67	68	8	13.3
<i>Forestry</i>	214	199	192	205	211	-3	-1.4
Forestry	41	47	46	42	36	-5	-12.2
Forest Management	28	21	26	18	17	-11	-39.3
Forest Recreation Management	17	13	12	15	18	1	5.9
Forest Range Management	1	1	1	0	0	-1	-100.0
Forest Wildlife Management	127	117	107	121	126	-1	-0.8
Spatial Science	0	0	0	9	14	14	-
Transient Student	0	1	0	1	1	1	-
<i>Undecided FORESTRY / AGRICULTURE</i>	1	1	8	5	5	4	400.0



Undergraduate Enrollment by Major
Fall Semesters 2006- 2010
(Continued)

COLLEGE / Unit / Major	Fall Semester					5-year Change	
	2006	2007	2008	2009	2010	N	%
LIBERAL / APPLIED ARTS	2,865	2,743	2,831	2,993	2,972	107	3.7
<i>Applied Arts / Sciences</i>	166	124	103	89	69	-97	-58.4
Applied Arts & Sciences	149	122	100	86	69	-80	-53.7
Career / Self Improvement	17	2	3	3	0	-17	-100.0
<i>Communication & Contemporary Culture</i>	530	474	477	481	438	-92	-17.4
Communication Studies	86	88	101	119	104	18	20.9
Journalism	211	165	168	152	150	-61	-28.9
Philosophy	4	7	8	11	13	9	225.0
Radio / TV	229	214	200	199	171	-58	-25.3
<i>English</i>	180	181	201	232	251	71	39.4
American English Language Institute	0	0	1	2	0	0	-
Creative Writing	9	22	28	42	65	56	622.2
English	171	159	172	188	186	15	8.8
<i>Government</i>	474	447	469	518	562	88	18.6
Corrections	36	24	27	42	53	17	47.2
Criminal Justice	84	73	0	0	0	-84	-100.0
Law Enforcement	152	140	224	252	270	118	77.6
Legal Assistant	33	32	42	56	58	25	75.8
Political Science	159	161	157	147	162	3	1.9
Public Administration	10	17	19	21	19	9	90.0
<i>History</i>	188	196	209	200	192	4	2.1
<i>Modern Language</i>	43	47	46	41	43	0	0.0
French	6	11	12	12	8	2	33.3
Spanish	37	36	34	29	35	-2	-5.4
<i>Psychology</i>	357	390	385	414	438	81	22.7
<i>Social Work</i>	189	174	193	206	217	28	14.8
Pre-Social Work	98	82	82	106	102	4	4.1
Social Work	91	92	111	100	115	24	26.4
<i>Social & Cultural Analysis</i>	86	87	106	110	97	11	12.8
Geography	12	18	16	15	21	9	75.0
Gerontology	5	3	4	5	3	-2	-40.0
Sociology	69	66	86	90	73	4	5.8
Concurrent / Not Designated	106	96	98	186	213	107	100.9
Humanities	0	0	0	0	0	0	-
Interdisciplinary Studies	0	0	0	0	0	0	-
Liberal Studies	28	33	33	34	38	10	35.7
Pre-program	0	0	0	1	0	0	-
Provisional Admission	0	0	1	0	0	0	-
Transient Student	3	4	1	2	2	-1	-33.3
<i>Undecided LIBERAL / APPLIED ARTS</i>	515	490	509	479	412	-103	-20.0



Stephen F. Austin State University

Undergraduate Enrollment by Major Fall Semesters 2006- 2010 (Continued)

COLLEGE / Unit / Major	Fall Semester					5-year Change	
	2006	2007	2008	2009	2010	N	%
SCIENCES / MATHEMATICS	1,707	1,771	1,724	1,926	1,984	277	16.2
Biology	248	341	316	307	333	85	34.3
Chemistry	50	75	83	99	110	60	120.0
Chemistry	44	52	38	45	46	2	4.5
Biochemistry	6	23	45	54	64	58	966.7
Geology	57	66	72	70	64	7	12.3
Mathematics / Statistics	83	91	106	116	108	25	30.1
Mathematics	83	91	106	116	108	25	30.1
Nursing	753	832	855	959	1,082	329	43.7
Physics / Astronomy	66	79	70	64	86	20	30.3
Physics	66	79	70	64	86	20	30.3
Preprofessional	434	250	193	243	124	-310	-71.4
Pre-Professional Biology	3	1	1	0	-	-	-
Pre-Dentistry	38	24	15	27	-	-	-
Pre-Dental Hygiene	6	4	0	0	-	-	-
Pre-Engineering	44	52	48	58	-	-	-
Pre-Health Info. Management	1	0	0	0	-	-	-
Pre-Medical Technology	5	0	0	0	-	-	-
Pre-Medicine	159	94	64	78	-	-	-
Pre-Occupational Therapy	10	2	2	1	-	-	-
Pre-Optometry	8	1	1	5	-	-	-
Pre-Physician's Assistant	18	5	2	3	-	-	-
Pre-Pharmacy	65	23	28	31	-	-	-
Pre-Physical Therapy	59	38	29	26	-	-	-
Pre-Veterinary Medicine	12	5	3	14	-	-	-
Undecided Preprofessional	6	1	0	0	-	-	-
Transient Student	0	1	0	0	1	1	-
Undecided SCIENCES / MATHEMATICS	16	36	29	68	76	60	375.0

Note: The Preprofessional program changed procedures for determining and classifying individuals enrolled in the programs.



Graduate-Master and Post-baccalaureate Enrollment by Major Fall Semesters 2006- 2010

COLLEGE / Unit / Major	Fall Semester					5-year Change	
	2006	2007	2008	2009	2010	N	%
SFA Total	1,538	1,437	1,526	1,649	1,605	67	4.4
BUSINESS	106	97	117	133	127	21	19.8
Accounting	39	43	51	60	61	22	56.4
Accounting	5	9	11	20	28	23	460.0
Professional Accountancy	34	34	40	40	33	-1	-2.9
Computer Science	8	10	8	6	6	-2	-25.0
Computer Science	8	10	8	5	6	-2	-25.0
Information Technology	0	0	0	1	0	0	-
Economics / Finance	0	0	1	2	2	2	-
Business Economics	0	0	0	0	1		
Economics	0	0	0	1	1	1	-
Finance	0	0	1	1	0	0	-
General Business	45	31	36	40	36	-9	-20.0
General Business	44	31	36	40	36	-8	-18.2
Pre-General Business	1	0	0	0	0	-1	-100.0
Management / Marketing. / Int. Business	9	13	18	24	21	12	133.3
Management	9	13	17	24	20	11	122.2
Marketing	0	0	1	0	1	1	-
Undecided BUSINESS	5	0	3	1	1	-4	-80.0



Stephen F. Austin State University

Graduate-Master and Post-baccalaureate Enrollment by Major Fall Semesters 2006- 2010 (Continued)

COLLEGE / Unit /Major	Fall Semester					5-year Change	
	2006	2007	2008	2009	2010	N	%
EDUCATION	822	795	808	849	720	-102	-12.4
<i>Elementary Education</i>	159	160	172	158	119	-40	-25.2
Early Childhood Education	5	8	8	17	13	8	160.0
Elementary Education	152	150	163	140	105	-47	-30.9
Interdisciplinary Studies	2	2	1	1	1	-1	-50.0
<i>Human Sciences</i>	41	27	43	61	71	30	73.2
Child Development / Family Living	0	0	1	1	0	0	-
Family / Consumer Sciences	37	25	39	1	0	-37	-100.0
Food / Nutrition / Dietetics	1	0	0	1	1	0	0.0
Hospitality Administration	2	1	1	0	0	-2	-100.0
Human Sciences	0	0	0	58	67	67	-
Interior Design	1	1	2	0	3	2	200.0
<i>Human Services</i>	195	200	219	257	213	18	9.2
Communication Disorders	2	0	0	7	5	3	150.0
Counseling	2	2	0	0	0	-2	-100.0
Counseling - Community	20	25	28	21	20	0	0.0
Counseling - Rehabilitation	7	9	10	6	9	2	28.6
Counseling - School	29	32	39	46	41	12	41.4
Deaf & Hard of Hearing	2	2	0	0	1	-1	-50.0
Rehabilitation Services	0	0	0	1	1	1	-
School Psychology	10	10	10	17	5	-5	-50.0
Special Education	83	79	91	123	95	12	14.5
Speech Language Pathology	40	41	41	36	36	-4	-10.0
<i>Kinesiology / Health Science</i>	45	51	53	56	58	13	28.9
Athletic Training	14	15	15	15	19	5	35.7
Health Science	0	0	0	0	1	1	-
Kinesiology	31	36	38	41	38	7	22.6
<i>Secondary Education</i>	328	318	308	305	223	-105	-32.0
Educational Leadership	188	214	210	205	139	-49	-26.1
School Supervision	2	0	0	0	0	-2	-100.0
Secondary Education (General)	138	104	98	100	84	-54	-39.1
Undecided EDUCATION	54	39	13	12	36	-18	-33.3



Graduate-Master and Post-baccalaureate Enrollment by Major
 Fall Semesters 2006- 2010
 (Continued)

COLLEGE / Unit / Major	Fall Semester					5-year Change	
	2006	2007	2008	2009	2010	N	%
FINE ARTS	62	54	71	69	94	32	51.6
Art	29	23	28	26	32	3	10.3
Art	29	23	28	26	26	-3	-10.3
Art Education	0	0	0	0	6	6	-
Music	31	29	41	40	60	29	93.5
Music	2	2	3	4	12	10	500.0
Music Conducting	4	4	7	5	11	7	175.0
Music Education	11	10	15	18	21	10	90.9
Music Performance	14	13	16	13	16	2	14.3
Theatre	0	0	0	2	0	0	-
Undecided FINE ARTS	2	2	2	1	2	0	0.0
FORESTRY / AGRICULTURE	139	127	115	132	137	-2	-1.4
Agriculture	18	15	16	20	18	0	0.0
General Agriculture	17	14	16	20	18	1	5.9
Poultry Science	1	1	0	0	0	-1	-100.0
Environmental Science	32	32	31	31	34	2	6.3
Forestry	87	79	67	79	73	-14	-16.1
Forestry	33	25	26	29	31	-2	-6.1
Forest Wildlife Management	0	0	0	1	0	0	-
Resource Interpretation	49	50	37	43	36	-13	-26.5
Spatial Science	5	4	4	6	6	1	20.0
Undecided FORESTRY / AGRICULTURE	2	1	1	2	12	10	500.0



Stephen F. Austin State University

Graduate-Master and Post-baccalaureate Enrollment by Major Fall Semesters 2006- 2010 (Continued)

COLLEGE / Unit / Major	Fall Semester					5-year Change	
	2006	2007	2008	2009	2010	N	%
LIBERAL / APPLIED ARTS	229	230	276	305	329	100	43.7
<i>Applied Arts / Sciences</i>	2	0	0	0	0	-2	-100.0
Career / Self Improvement	2	0	0	0	0	-2	-100.0
<i>Communication & Contemporary Culture</i>	28	25	23	26	26	-2	-7.1
Communication	0	0	23	26	24	24	-
Communication Studies	0	0	0	0	1	1	-
General Communication	28	24	0	0	0	-28	-100.0
Journalism	0	0	0	0	1	1	-
Radio / TV	0	1	0	0	0	0	-
<i>English</i>	23	21	21	17	16	-7	-30.4
English	23	21	20	17	15	-8	-34.8
Creative Writing	0	0	1	0	1	1	-
<i>Government</i>	23	29	48	46	48	25	108.7
Law Enforcement	0	0	0	0	1	1	-
Political Science	1	0	0	2	3	2	200.0
Public Administration	22	29	48	44	44	22	100.0
<i>History</i>	22	20	24	36	31	9	40.9
<i>Modern Language</i>	0	0	0	2	3	3	-
French	0	0	0	0	2	2	-
Spanish	0	0	0	2	1	1	-
<i>Psychology</i>	44	23	11	14	17	-27	-61.4
<i>Social Work</i>	48	74	90	85	87	39	81.3
Pre-Social Work	2	0	0	1	0	-2	-100.0
Social Work	46	74	90	84	87	41	89.1
<i>Social & Cultural Analysis</i>	0	0	1	0	0	0	-
Gerontology	0	0	1	0	0	0	-
Liberal Studies	0	0	0	1	0	0	-
Interdisciplinary Studies	35	29	26	44	34	-1	-2.9
Transient Student	0	0	0	1	0	0	-
Undecided LIBERAL / APPLIED ARTS	4	9	32	33	67	63	1575.0



Graduate-Master and Post-baccalaureate Enrollment by Major
Fall Semesters 2006- 2010
(Continued)

COLLEGE / Unit / Major	Fall Semester					5-year Change	
	2006	2007	2008	2009	2010	N	%
SCIENCES / MATHEMATICS	180	134	139	161	198	18	10.0
<i>Biology</i>	24	17	14	17	20	-4	-16.7
<i>Biotechnology</i>	50	37	36	28	33	-17	-34.0
<i>Chemistry</i>	0	3	8	5	8	8	-
Biochemistry	0	0	0	0	1	1	-
Chemistry	0	3	8	5	7	7	-
<i>Geology</i>	9	9	17	21	25	16	177.8
<i>Mathematics / Statistics</i>	52	38	22	19	22	-30	-57.7
Mathematics	18	10	10	10	13	-5	-27.8
Statistics	6	6	10	9	6	0	0.0
Mathematics Teaching	28	22	2	0	3	-25	-89.3
<i>Natural Science</i>	1	0	1	31	21	20	2000.0
<i>Nursing</i>	29	20	32	26	28	-1	-3.4
<i>Physics / Astronomy</i>	5	6	5	6	14	9	180.0
Physics	5	6	5	6	14	9	180.0
Preprofessional	3	1	2	2	3	0	0.0
Pre-Dentistry	0	0	0	0	-	-	-
Pre-Engineering	0	0	1	0	-	-	-
Pre-Medicine	1	0	0	0	-	-	-
Pre-Pharmacy	1	1	0	1	-	-	-
Pre-Physical Therapy	0	0	1	0	-	-	-
Pre-Professional Biology	0	0	0	1	-	-	-
Pre-Veterinary Medicine	1	0	0	0	-	-	-
Undecided Preprofessional	0	0	0	0	-	-	-
Undecided SCIENCES / MATHEMATICS	7	3	2	6	24	17	242.9

Note: The Preprofessional program changed procedures for determining and classifying individuals enrolled in the programs.



Stephen F. Austin State University

Graduate-Doctoral Enrollment by Major Fall Semesters 2006- 2010

COLLEGE / Unit / Major	Fall Semester					5-year Change	
	2006	2007	2008	2009	2010	N	%
SFA Total	60	64	60	52	80	20	33.3
EDUCATION	46	44	42	38	65	19	41.3
<i>Secondary Education</i>	46	44	42	38	41	-5	-10.9
Educational Admin. and Super.	10	0	0	0	0	-10	-100.0
Educational Leadership	36	44	42	38	41	5	13.9
<i>Human Services</i>	0	0	0	0	24	24	-
School Psychology	0	0	0	0	24	24	-
FORESTRY / AGRICULTURE	14	20	18	14	15	1	7.1
<i>Forestry</i>	14	20	18	14	15	1	7.1



Undergraduate Enrollment by Minor Fall Semesters 2006- 2010

COLLEGE / Unit / Minor	Fall Semester					5-year Change	
	2006	2007	2008	2009	2010	N	%
SFA Total	2,302	2,402	2,390	2,423	2,500	198	8.6
BUSINESS	474	496	523	508	410	-64	-13.5
<i>Accounting</i>	21	10	13	15	16	-5	-23.8
<i>Computer Science</i>	16	24	33	33	33	17	106.3
Computer Information Systems	5	1	3	2	3	-2	-40.0
Computer Information Technology	1	10	19	19	19	18	1800.0
Computer Science	10	13	11	12	11	1	10.0
<i>Economics / Finance</i>	20	27	28	30	23	3	15.0
Business Economics	1	3	1	2	1	0	0.0
Economics	7	9	13	15	11	4	57.1
Finance	12	15	14	13	11	-1	-8.3
<i>General Business</i>	263	276	273	265	205	-58	-22.1
Administrative Law	1	7	7	10	9	8	800.0
Business Communication	15	14	13	5	10	-5	-33.3
General Business	246	254	253	250	184	-62	-25.2
Gen. Bus. Technology Applications	0	0	0	0	2	2	-
Petroleum Land Management	1	1	0	0	0	-1	-100.0
<i>Management / Marketing / Int. Business</i>	152	159	176	165	133	-19	-12.5
Electronic Business	4	5	0	2	3	-1	-25.0
Entrepreneurship	8	8	8	6	7	-1	-12.5
International Business	5	4	15	12	5	0	0.0
Management	53	51	49	50	33	-20	-37.7
Marketing	74	68	75	64	62	-12	-16.2
Sports Marketing	8	23	29	31	23	15	187.5
Pre-Business	2	0	0	0	0	-2	-100.0



Stephen F. Austin State University

Undergraduate Enrollment by Minor Fall Semesters 2006- 2010 (Continued)

COLLEGE / Unit / Minor	Fall Semester					5-year Change	
	2006	2007	2008	2009	2010	N	%
EDUCATION	376	415	465	502	544	168	44.7
<i>Elementary Education</i>	17	20	35	45	47	30	176.5
Early Childhood Education	15	19	34	42	47	32	213.3
Elementary Education	1	0	0	3	0	-1	-100.0
Reading Education	1	1	1	0	0	-1	-100.0
<i>Human Sciences</i>	130	143	140	140	149	19	14.6
Child Development / Family Living	30	25	28	27	28	-2	-6.7
Combination Sciences	0	21	14	5	0	0	-
Family / Consumer Sciences	13	4	14	17	15	2	15.4
Family Development	1	0	1	0	1	0	0.0
Fashion Merchandising	17	17	14	11	10	-7	-41.2
Food / Nutrition / Dietetics	44	58	53	54	67	23	52.3
Food Service/ Restaurant Management	0	0	0	2	0	0	-
Hospitality Administration	16	11	9	13	20	4	25.0
Interior Design	7	6	5	10	8	1	14.3
Interior Merchandising	2	1	2	1	0	-2	-100.0
<i>Human Services</i>	120	133	138	119	102	-18	-15.0
Addiction Studies	2	4	5	3	8	6	300.0
Communication Disorders	6	4	3	4	2	-4	-66.7
Deaf & Hard of Hearing	9	10	18	18	15	6	66.7
Early Intervention	24	31	21	20	23	-1	-4.2
Educational Interpreting	21	30	25	16	13	-8	-38.1
Orientation / Mobility	2	1	5	2	0	-2	-100.0
Rehabilitation Services	15	16	18	16	10	-5	-33.3
Special Education	41	37	43	39	30	-11	-26.8
Speech Pathology	0	0	0	1	1	1	-
<i>Kinesiology / Health Science</i>	108	119	125	147	202	94	87.0
Athletic Coaching	7	20	30	25	31	24	342.9
Athletic Training	20	11	4	2	1	-19	-95.0
Dance	18	21	24	22	38	20	111.1
Health Science	11	13	25	46	62	51	463.6
Kinesiology	52	54	42	52	70	18	34.6
<i>Secondary Education</i>	1	0	27	51	44	43	4300.0
Undecided EDUCATION	0	0	0	1	0	0	-



Undergraduate Enrollment by Minor
 Fall Semesters 2006- 2010
 (Continued)

COLLEGE / Unit / Minor	Fall Semester					5-year Change	
	2006	2007	2008	2009	2010	N	%
FINE ARTS	153	156	143	122	112	-41	-26.8
Art	85	70	72	63	58	-27	-31.8
Art	84	69	72	62	56	-28	-33.3
Art History	1	1	0	1	2	1	100.0
Drawing	0	0	0	0	0	0	-
Music	45	62	50	42	31	-14	-31.1
Music	42	61	49	42	29	-13	-31.0
Music Education	0	0	0	0	1	1	-
Music Performance	2	1	1	0	0	-2	-100.0
Music - Piano Pedagogy	1	0	0	0	1	0	0.0
Theatre	23	24	21	17	23	0	0.0
FORESTRY / AGRICULTURE	50	54	49	46	73	23	46.0
Agriculture	29	26	19	14	30	1	3.4
Agribusiness	4	7	5	3	2	-2	-50.0
Agriculture Development	1	3	2	2	2	1	100.0
Agriculture Machinery	3	0	1	1	1	-2	-66.7
Agronomy	2	1	0	0	0	-2	-100.0
Animal Science	6	12	6	3	7	1	16.7
General Agriculture	2	0	0	0	1	-1	-50.0
Horticulture	4	3	3	2	1	-3	-75.0
Poultry Science	4	0	0	0	2	-2	-50.0
Spatial Science	3	0	2	3	14	11	366.7
Environmental Science	6	5	5	5	7	1	16.7
Forestry	15	23	25	27	36	21	140.0
Forest Management	0	0	0	0	0	0	-
Forest Recreation Management	3	0	0	2	4	1	33.3
Forest Wildlife Management	5	9	8	8	13	8	160.0
Forestry	7	13	12	11	14	7	100.0
Geospatial Sciences	0	1	5	6	5	5	-



Stephen F. Austin State University

Undergraduate Enrollment by Minor Fall Semesters 2006- 2010 (Continued)

COLLEGE / Unit / Minor	Fall Semester					5-year Change	
	2006	2007	2008	2009	2010	N	%
LIBERAL / APPLIED ARTS	833	831	771	835	934	101	12.1
<i>Applied Arts and Sciences</i>	0	0	1	0	2	2	-
Communication & Contemporary Culture	131	118	98	91	97	-34	-26.0
Communication	12	8	5	2	3	-9	-75.0
Communication Studies	23	29	30	33	28	5	21.7
General Communication	14	1	3	0	0	-14	-100.0
Journalism	35	40	28	26	24	-11	-31.4
Mass Communication	1	0	0	0	0	-1	-100.0
Philosophy	15	16	10	9	10	-5	-33.3
Radio / TV	28	23	21	21	32	4	14.3
Speech Communication	3	1	1	0	0	-3	-100.0
English	104	125	110	121	148	44	42.3
African-American Literary Studies	2	9	2	3	0	-2	-100.0
Children's Literature	0	0	1	5	8	8	-
Creative Writing	21	24	34	36	40	19	90.5
English	47	33	29	44	41	-6	-12.8
Film Studies	7	24	17	8	11	4	57.1
Linguistics	0	0	0	0	3	3	-
Literature	3	11	11	13	35	32	1066.7
Technical Writing	0	0	0	0	2	2	-
Writing	24	24	16	12	8	-16	-66.7
Government	90	81	86	104	117	27	30.0
Corrections	1	0	0	1	0	-1	-100.0
Criminal Justice	40	41	34	46	54	14	35.0
Law Enforcement	5	7	6	3	0	-5	-100.0
Legal Assistant	0	1	4	0	1	1	-
Political Science	41	27	30	31	30	-11	-26.8
Public Administration	3	5	12	23	32	29	966.7
History	71	76	79	84	85	14	19.7
Military Science	24	29	34	34	40	16	66.7
Modern Language	66	59	57	72	76	10	15.2
French	9	8	7	13	17	8	88.9
German	0	0	0	0	1	1	-
Spanish	57	51	50	59	58	1	1.8
Psychology	195	193	160	166	182	-13	-6.7
Social Work	0	1	0	1	2	2	-



Enrollment by Undergraduate Minor
Fall Semesters 2006- 2010
(Continued)

COLLEGE / Unit / Minor	Fall Semester					5-year Change	
	2006	2007	2008	2009	2010	N	%
LIBERAL / APPLIED ARTS (continued)							
Social & Cultural Analysis	110	106	97	111	136	26	23.6
Anthropology	10	13	17	19	24	14	140.0
Geography	15	11	14	14	13	-2	-13.3
Geography with Urban Studies	1	1	0	0	0	-1	-100.0
Gerontology	1	1	3	4	1	0	0.0
Sociology	83	80	63	74	98	15	18.1
American Studies	4	3	6	1	0	-4	-100.0
Classical Literary Studies	1	2	5	6	4	3	300.0
Gender Studies	5	4	6	5	5	0	0.0
Interdisciplinary Studies	4	1	1	0	0	-4	-100.0
International Studies	10	17	12	24	23	13	130.0
Latin American Studies	12	11	14	5	5	-7	-58.3
Leadership	6	4	1	5	7	1	16.7
Religious Studies	0	0	2	5	5	5	-
Undecided	0	1	2	0	0	0	-
SCIENCES / MATHEMATICS	416	450	439	410	427	11	2.6
Biology	206	217	202	191	168	-38	-18.4
Biology	206	215	202	191	168	-38	-18.4
Biochemistry	0	2	0	0	0	0	-
Chemistry	34	35	28	19	22	-12	-35.3
Geology	22	21	13	19	19	-3	-13.6
Mathematics / Statistics	54	67	68	66	80	26	48.1
Applied Statistics	0	3	2	2	2	2	-
Mathematics	49	58	60	62	75	26	53.1
Statistics	5	6	6	2	3	-2	-40.0
Nursing	0	0	1	0	0	0	-
Physics / Astronomy	20	22	26	18	24	4	20.0
Astronomy	10	9	10	5	6	-4	-40.0
Engineering	2	5	5	5	8	6	300.0
Physics	5	6	9	8	10	5	100.0
Pre-Engineering	3	2	2	0	0	-3	-100.0
Combined Sciences	15	12	58	67	92	77	513.3
Combined Sciences / Mathematics	63	57	26	13	13	-50	-79.4
Human Health Perspectives	0	0	0	0	9	9	-
Pre-Dentistry	0	0	0	2	0	0	-
Pre-Medicine	1	10	6	4	0	-1	-100.0
Pre-Occupational Therapy	0	5	4	3	0	0	-
Pre-Optometry	0	0	0	2	0	0	-
Pre-Pharmacy	0	0	2	3	0	0	-
Pre-Physical Therapy	0	4	4	2	0	0	-
Pre-Physicians Assistant	0	0	0	1	0	0	-
Pre-Veterinary Medicine	1	0	1	0	0	-1	-100.0



Stephen F. Austin State University

Enrollment by Age Headcount and Percentage Fall Semesters 2006- 2010

Age Group	2006		2007		2008		2009		2010	
	N	%	N	%	N	%	N	%	N	%
18 and under	2,174	18.5	2,156	18.6	2,337	19.5	2,462	19.2	2,350	18.1
19 - 21	4,575	38.9	4,732	40.8	5,063	42.2	5,475	42.6	5,630	43.5
22 - 24	2,462	20.9	2,337	20.1	2,223	18.5	2,314	18.0	2,398	18.5
25 - 30	1,186	10.1	1,131	9.7	1,122	9.4	1,199	9.3	1,154	8.9
31 & Up	1,359	11.6	1,251	10.8	1,245	10.4	1,395	10.9	1,422	11.0
Total	11,756		11,607		11,990		12,845		12,954	

Enrollment by Residence Headcount and Percentage Fall Semesters 2006- 2010

Residence	2006		2007		2008		2009		2010	
	N	%	N	%	N	%	N	%	N	%
Texas	11,315	96.2	11,203	96.5	11,538	96.2	12,379	96.4	12,462	96.2
Out of State	295	2.5	247	2.1	270	2.3	290	2.3	308	2.4
Foreign	139	1.2	156	1.3	174	1.5	164	1.3	156	1.2
No Tuition	7	0.1	1	-	8	0.1	12	0.1	28	0.2
Total	11,756		11,607		11,990		12,845		12,954	



Enrollment by Texas County
2009 Top 20 Texas Counties Only
Sorted by 2009 Column
Fall Semesters 2006- 2010

County	Headcount					% of Total from Top 20 Counties
	2006	2007	2008	2009	2010	
SFA Total	11,756	11,607	11,990	12,845	12,954	
1. Harris	1,746	1,772	1,886	1,990	1,984	20.7
2. Nacogdoches	1,701	1,501	1,467	1,595	1,570	16.4
3. Dallas	758	859	992	1,150	1,177	12.3
4. Angelina	809	784	814	811	816	8.5
5. Tarrant	534	546	585	643	729	7.6
6. Fort Bend	372	403	375	408	442	4.6
7. Collin	303	308	353	392	432	4.5
8. Denton	200	226	257	283	261	2.7
9. Montgomery	217	225	249	254	253	2.6
10. Gregg	247	255	250	277	243	2.5
11. Smith	221	234	238	254	239	2.5
12. Shelby	240	224	212	217	236	2.5
13. Galveston	152	156	169	181	195	2.0
14. Brazoria	134	151	169	166	167	1.7
15. Rusk	173	147	167	179	164	1.7
16. Travis	169	157	145	163	150	1.6
17. Harrison	131	120	122	155	139	1.5
18. Williamson	119	129	122	135	132	1.4
19. Cherokee	129	125	119	124	130	1.4
20. Ellis	92	106	104	116	121	1.3

Fall 2010 Total for Top 20 Texas Counties
Percent of SFA Total Enrollment

9,580
74.0%

Note: In fall 2010, SFA students came from 43 states outside Texas (309 students) and 34 foreign countries (157 students).



Stephen F. Austin State University

Enrollment by East Texas County
 Sorted by 2009 Headcount
 Fall Semesters 2006- 2010

County	Headcount				
	2006	2007	2008	2009	2010
SFA Total	11,756	11,607	11,990	12,845	12,954
Nacogdoches	1,701	1,501	1,467	1,595	1,570
Angelina	809	784	814	811	816
Gregg	247	255	250	277	243
Smith	221	234	238	254	239
Shelby	240	224	212	217	236
Rusk	173	147	167	179	164
Harrison	131	120	122	155	139
Cherokee	129	125	119	124	130
Anderson	60	71	91	120	113
Panola	90	89	93	89	94
Henderson	94	101	106	84	74
San Augustine	69	75	66	73	73
Sabine	60	63	82	73	66
Upshur	55	62	55	54	59
Van Zandt	66	56	48	40	46
Wood	57	51	33	36	34
Rains	2	2	3	7	8
Total for East Texas Counties	4,204	3,960	3,966	4,188	4,104
Percent of SFA Total Enrollment	35.8%	34.1%	33.1%	32.6%	31.7%

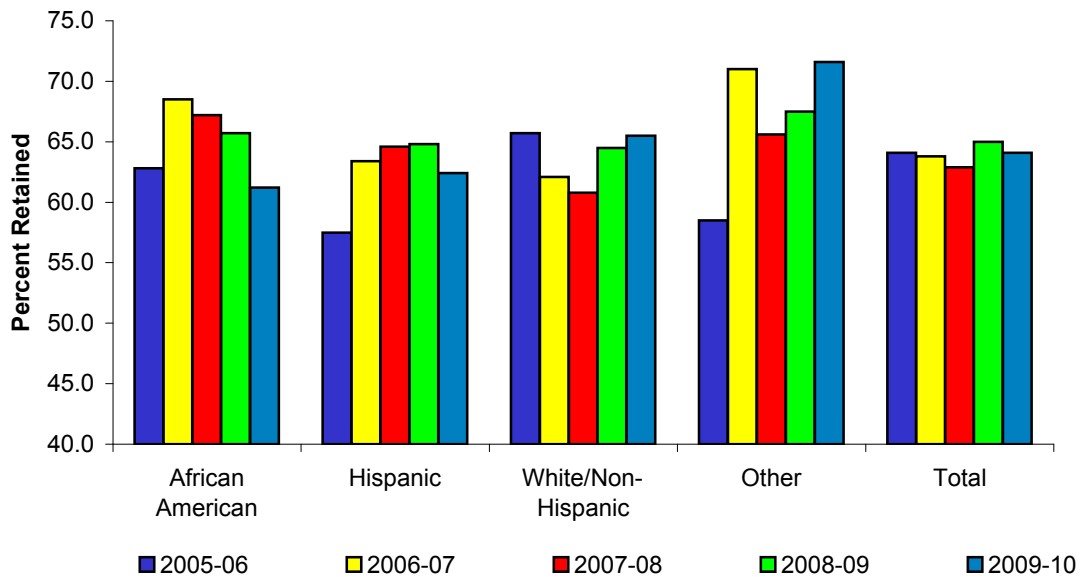
Note: Counties listed are in Region 7 ('Immediate East Texas Area').



One-Year Retention Rates
 First-time Full-time Freshmen
 Percent Returning After One Year
 Fall Semesters of Entry 2005 - 2009

Ethnicity	2005-06	2006-07	2007-08	2008-09	2009-10
SFA Total	64.1	63.8	62.9	65.0	64.1
African American	62.8	68.5	67.2	65.7	61.2
Hispanic	57.5	63.4	64.6	64.8	62.4
White/Non-Hispanic	65.7	62.1	60.8	64.5	65.5
Other	58.5	71.0	65.6	67.5	71.6

One-Year Retention Rates Chart
 First-time Full-time Freshmen
 Percent Returning After One Year
 Fall Semesters of Entry 2005 - 2009





Stephen F. Austin State University

First-time Freshmen by Semester and Gender Academic Years 2007 - 2011

Semester	2006-07			2007-08			2008-09			2009-10			2010-11		
	M	F	Total	M	F	Total	M	F	Total	M	F	Total	M	F	Total
SFA Fiscal Year	893	1,448	2,471	890	1,362	2,481	915	1,537	2,684	901	1,576	2,736	744	1,433	2,177
Fall	845	1,401	2,246	858	1,324	2,182	877	1,477	2,354	863	1,533	2,396	744	1,433	2,177
Spring	48	47	95	32	38	70	38	60	98	38	43	81			
Summer*			130			229			232			259			

First-time Freshmen Average ACT/SAT Scores SFA - Texas - National Norms Fall Semesters 2001 - 2010

Test Type	Group	2001	2002	2003	2004	2005	2006	2007	2008	2009	2010
ACT Total	SFA	20.2	20.2	20.6	20.9	20.6	20.5	20.5	20.5	20.5	20.6
	Texas	20.3	20.1	20.1	20.2	20.2	20.3	20.5	20.7	20.8	20.8
	National	21.0	20.8	20.8	20.9	20.9	21.1	21.2	21.1	21.1	21.0
SAT Total	SFA	969	971	1,000	999	1,005	992	990	982	980	977
	Texas	992	991	993	992	995	997	999	993	992	989
	National	1,020	1,020	1,026	1,026	1,028	1,021	1,017	1,017	1,016	1,017



First-time Full-time Freshmen by Ethnicity Headcount and Percentage Fall Semesters 2006 - 2010

Ethnicity/ Race	2006		2007		2008		2009		2010	
	N	%	N	%	N	%	N	%	N	%
SFA Total	2,200		2,163		2,310		2,363		2,177	
Hispanic Ethnicity	229	10.4	222	10.3	256	11.1	269	11.4	233	10.7
Non-Hispanic Ethnicity, Single Race Reported										
American Indian/ Alaskan Native	6	0.3	9	0.4	14	0.6	15	0.6	12	0.6
Asian	27	1.2	30	1.4	30	1.3	32	1.4	20	0.9
Black or African American	456	20.7	525	24.3	647	28.0	672	28.4	613	28.2
Native Hawaiian/ Pac. Islander	n/a	-	n/a	-	n/a	-	n/a	-	1	0.0
White	1,455	66.1	1,355	62.6	1,333	57.7	1,351	57.2	1,164	53.5
Two or More Races Reported	n/a	-	n/a	-	n/a	-	n/a	-	54	2.5
Unknown, Race Not Reported	16	0.7	7	0.3	16	0.7	15	0.6	76	3.5
International, All Races & Ethnicities	11	0.5	15	0.7	14	0.6	9	0.4	4	0.2

First-time Transfer Students by Ethnicity Headcount and Percentage Fall Semesters 2006 - 2010

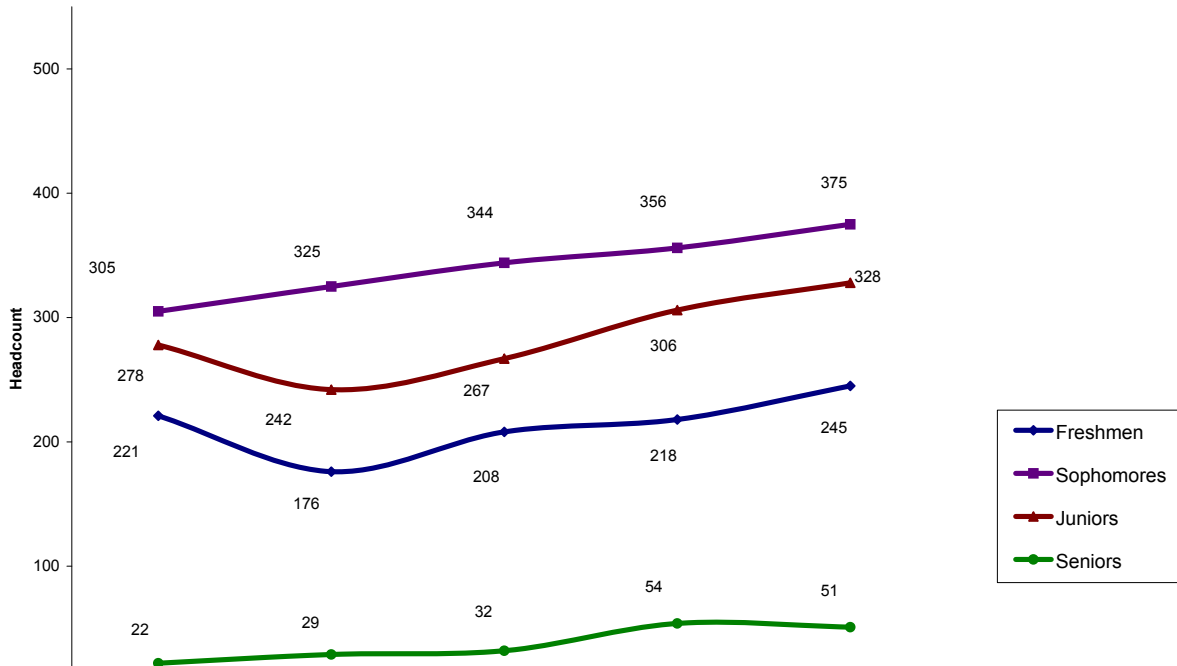
Ethnicity/ Race	2006		2007		2008		2009		2010	
	N	%	N	%	N	%	N	%	N	%
SFA Total	837		777		860		944		1,014	
Hispanic Ethnicity	70	8.4	60	7.7	76	8.8	103	10.9	78	7.7
Non-Hispanic Ethnicity, Single Race Reported										
American Indian/ Alaskan Native	10	1.2	8	1.0	2	0.2	5	0.5	5	0.5
Asian	6	0.7	7	0.9	7	0.8	9	1.0	8	0.8
Black or African American	115	13.7	107	13.8	145	16.9	180	19.1	188	18.5
Native Hawaiian/ Pac. Islander	n/a	-	n/a	-	n/a	-	n/a	-	0	0.0
White	603	72.0	563	72.5	597	69.4	621	65.8	671	66.2
Two or More Races Reported	n/a	-	n/a	-	n/a	-	n/a	-	5	0.5
Unknown, Race Not Reported	4	0.2	5	0.6	8	0.9	6	0.6	43	4.2
International, All Races & Ethnicities	29	3.5	27	3.5	25	2.9	20	2.1	16	1.6

Note: New federally-mandated race and ethnicity reporting began in Fall 2010. Due to the new reporting guidelines, race and ethnicity data assumptions are inappropriate.



Stephen F. Austin State University

First-time Undergraduate Transfer Students by Classification Chart
Fall Semesters 2006 - 2010



First-time Undergraduate Transfer Students by Classification
Academic Years 2006 - 2010

Classification	2006-07			2007-08			2008-09			2009-10			2010
	Fall	Spring	Sum.*	Fall	Spring	Sum.*	Fall	Spring	Sum.*	Fall	Spring	Sum.*	Fall
SFA Total	826	332	160	772	320	187	851	377	228	934	410	210	999
Freshmen	221	90	58	176	82	80	208	114	92	218	105	94	245
Sophomores	305	126	45	325	120	39	344	123	61	356	151	55	375
Juniors	278	107	39	242	107	56	267	123	59	306	136	46	328
Seniors	22	9	18	29	11	12	32	17	16	54	18	15	51

* Combined totals for Summer I and II



Top 20 New Transfer Feeder Institutions
Based on Fall 2009 Enrollments
First-time Transfer and Returning Transfer Students
Fall Semesters 2008 - 2010

Transfer Institution	2008			2009			2010		
	New	Return	Total	New	Return	Total	New	Return	Total
SFA Total In-state Transfers	746	122	868	836	159	995	779	224	1,003
Angelina College	126	37	163	136	42	178	115	74	189
Lone Star College	54	5	59	52	14	66	46	15	61
Kilgore College	44	6	50	65	9	74	48	11	59
Tyler Junior College	52	5	57	45	6	51	44	9	53
Panola Junior College	41	8	49	55	2	57	37	8	45
Dallas Co. Community College District	33	6	39	30	14	44	30	14	44
Tarrant County College District	22	2	24	19	7	26	33	5	38
Trinity Valley Community College	22	2	24	17	7	24	30	7	37
Houston Community College	10	3	13	28	6	34	24	11	35
Blinn College	28	2	30	32	3	35	28	2	30
San Jacinto College	20	2	22	19	4	23	25	3	28
Navarro College	12	0	12	23	1	24	22	3	25
Collin County Community College	23	2	25	20	4	24	18	1	19
Lee College	4	0	4	5	2	7	12	5	17
McLennan Community College	8	0	8	13	0	13	12	3	15
Lon Morris College	11	2	13	9	1	10	10	4	14
East Texas Baptist University	1	0	1	2	0	2	12	0	12
Austin Community College	10	7	17	9	3	12	7	4	11
Hill College	12	0	12	15	1	16	8	3	11
Lamar University	5	1	6	10	1	11	9	2	11

Fall 2010 Total for Top Transfer Institutions
Percent of Total In-state Transfers

754
75.2%



Stephen F. Austin State University

Average Class Size by Department Fall 2010

Special Notes Related to Average Class Size

- Lecture classes include lecture and seminar course types; lab classes include lab course type.
- Cross-listed courses are counted one time at the total enrollment value for all courses under the cross-listing (undergraduate and graduate cross-listings are counted as undergraduate on this report).
- Distance education courses, modern language labs, military science labs and SFA 101 classes are excluded.

COLLEGE/Unit	Lower Division		Upper Division		Graduate	
	Lecture	Lab	Lecture	Lab	Lecture	Lab
SFA Average Class Size: 26.3						
Average Class Size by Level	36.1	23.7	21.6	14.6	12.9	9.0
BUSINESS	36.2	-	26.4	-	23.3	-
Accounting	28.7	-	36.7	-	25.8	-
Computer Science	43.1	-	14.3	-	-	-
Economics / Finance	42.5	-	25.0	-	20.0	-
General Business	31.3	-	30.2	-	24.5	-
Management / Marketing / Int. Bus.	10.0	-	26.0	-	22.3	-
EDUCATION	36.4	25.8	26.6	13.8	11.1	8.7
Elementary Education	24.0	-	25.0	11.5	-	-
Human Sciences	40.9	29.0	21.4	13.0	11.0	-
Human Services	28.1	-	29.6	-	10.5	7.0
Kinesiology / Health Sciences	39.9	24.9	37.3	18.8	12.6	9.5
Secondary Education	-	-	19.3	17.7	11.3	-
FINE ARTS	35.5	16.1	24.2	25.0	10.0	15.0
Art	62.7	-	23.9	18.0	5.0	-
Music	34.6	-	23.5	25.5	12.5	-
Theatre	28.5	16.1	25.6	28.3	-	-
FORESTRY / AGRICULTURE	27.6	16.9	14.8	12.3	13.1	9.8
Agriculture	21.1	16.4	14.8	14.4	7.0	2.0
Environmental Science	40.0	20.0	11.8	10.7	11.3	-
Forestry	33.0	16.4	15.6	10.8	17.5	12.3
LIBERAL / APPLIED ARTS	35.1	17.2	24.0	15.0	15.6	-
Applied Arts / Sciences	18.5	-	-	-	-	-
Dean, Liberal & Applied Arts	-	-	13.0	-	-	-
Comm. & Contemp. Culture	30.2	17.2	18.7	13.0	11.0	-
English	24.8	-	20.1	-	7.0	-
Government	54.1	-	32.0	-	12.7	-
History	51.0	-	21.1	-	10.0	-
Military Science	11.1	-	7.4	-	-	-
Modern Languages	19.6	-	18.7	-	-	-
Psychology	65.7	-	33.9	17.7	11.3	-
Social & Cultural Analysis	51.9	-	25.8	-	-	-
Social Work	26.4	-	25.6	-	22.7	-
SCIENCES / MATHEMATICS	39.2	25.6	14.1	15.1	8.1	6.3
Biology	56.8	28.9	20.4	14.5	13.0	-
Biotechnology	-	-	-	-	6.3	6.0
Chemistry	41.3	23.3	23.3	15.3	3.0	-
Geology	35.2	23.8	13.4	13.3	9.7	-
Mathematics / Statistics	34.1	-	16.3	-	10.3	-
Nursing	-	-	12.8	-	-	-
Physics	49.0	24.9	17.7	28.0	9.0	7.0