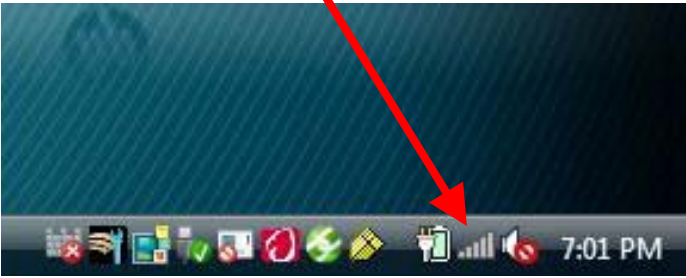


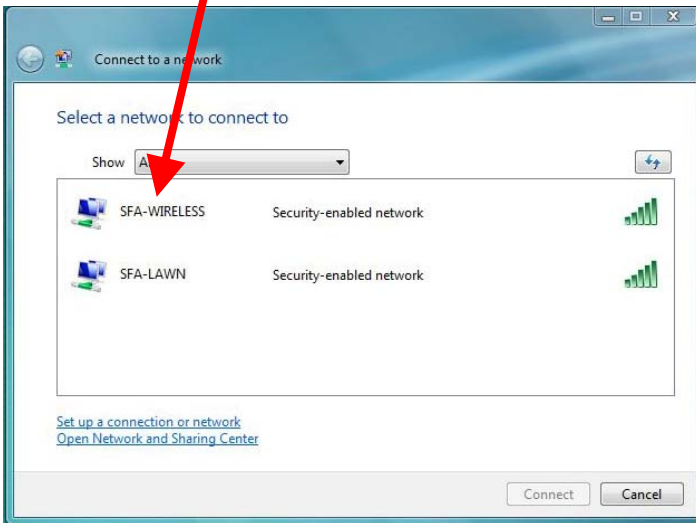
Connecting to the SFA Wireless with Windows Vista

(Uses WEP Authentication. Wired (Ethernet) connection recommended for sensitive information)

1. Click on the Wireless Icon in the lower-right corner of the screen and select, "Connect to network" or "Choose a wireless network".



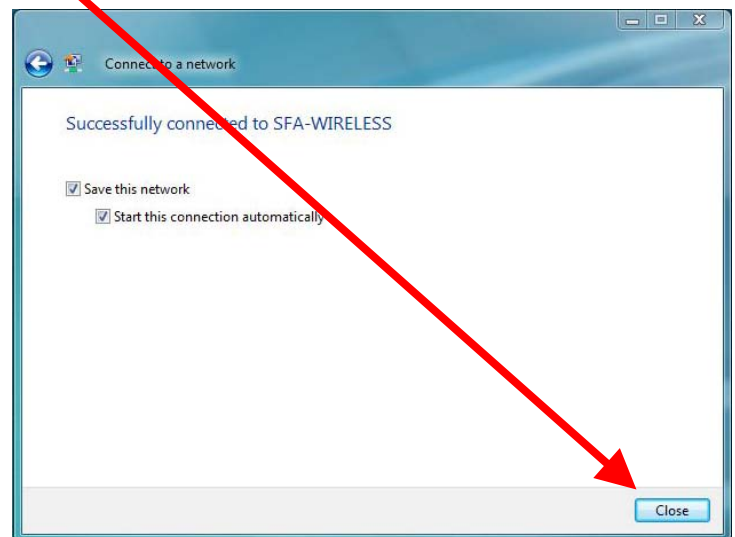
2. Select, "SFA-Wireless".



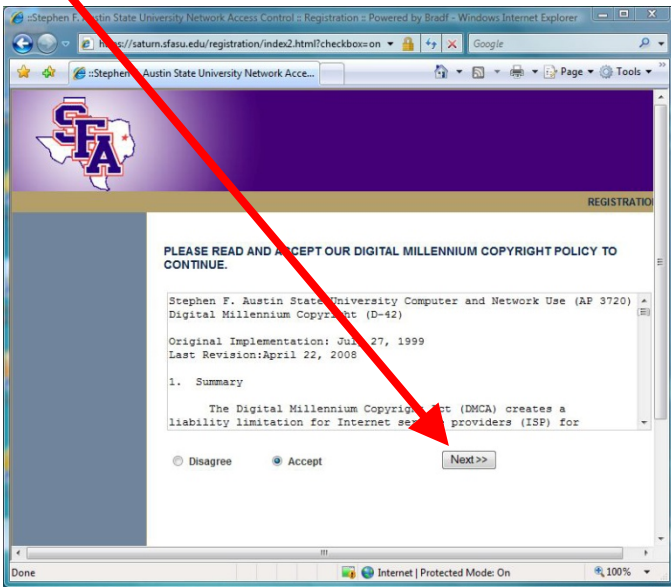
3. Enter the SFA-Wireless WEP Key, which is, "golumberjacks" (13 Characters, all lower-case, no spaces).



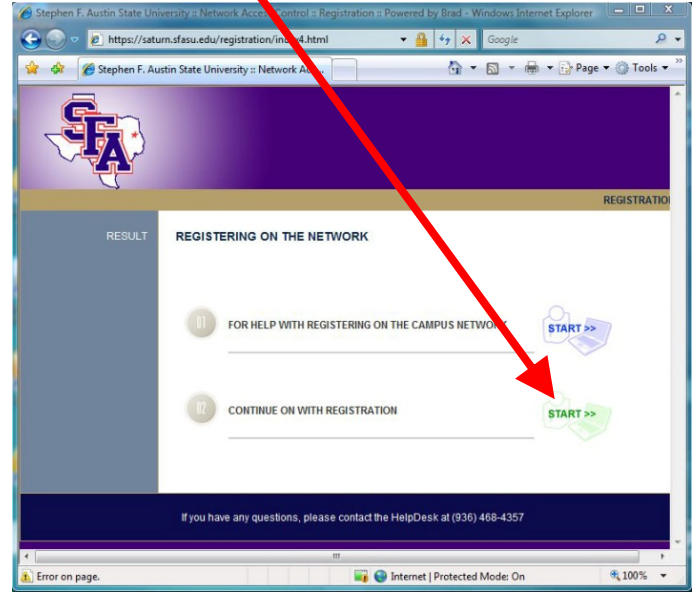
4. Once connected, check "Save this network" and "Start this connection automatically". Then click, "Close".



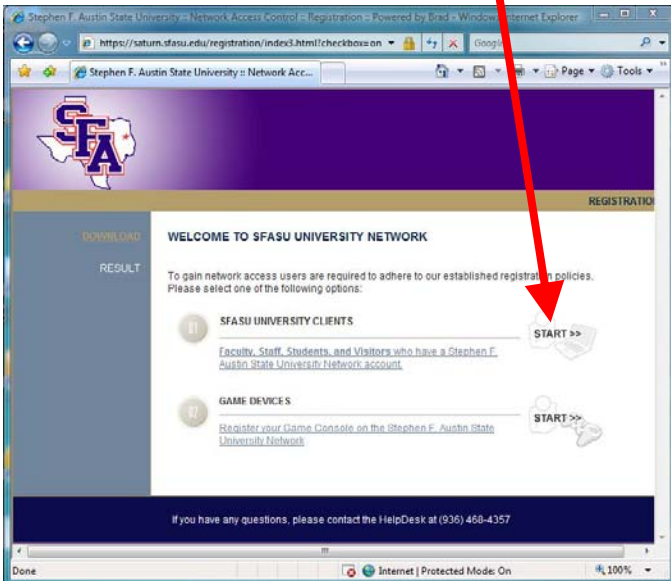
5. Open a Web Browser and you should automatically connect to the SFA Registration System. Accept the SFA Network Acceptable use policy, click, “Next” and then accept the Digital Millennium Copyright Policy and click, “Next”.



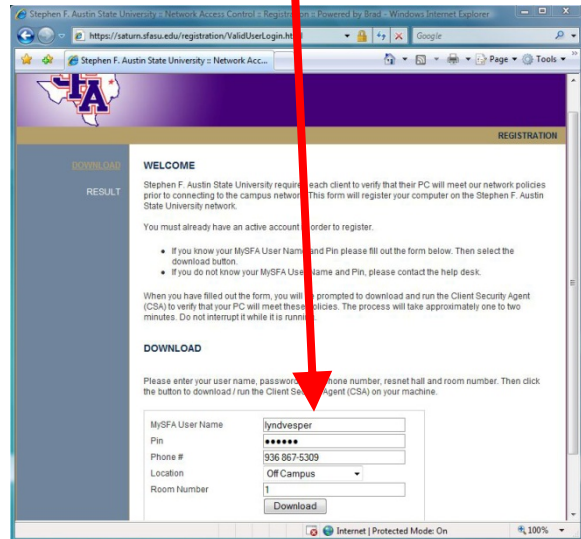
7. Click on, “START” next to, “Continue on with registration”.



6. Click on, “START” next to, “SFASU University Clients”.



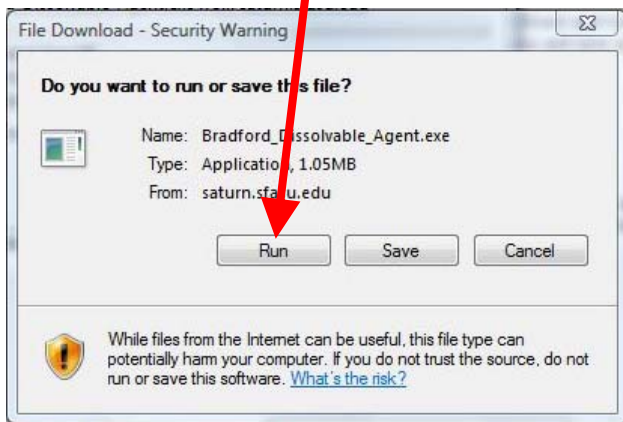
8(a). Fill out Registration Information.



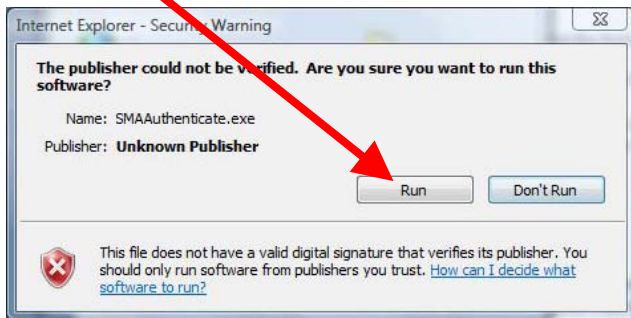
8(b). Use your MySFA Username and password to authenticate. For phone use any number that can be used to contact you. For location, select the on-campus building that you live or work in or select, "Off Campus". If you do not have a Room Number, just enter, "1". Then click on, "Download".

MySFA User Name	<input type="text" value="lyndvesper"/>
Pin	<input type="password" value="•••••"/>
Phone #	<input type="text" value="936 867-5309"/>
Location	<input type="text" value="Off Campus"/>
Room Number	<input type="text" value="1"/>
	<input type="button" value="Download"/>

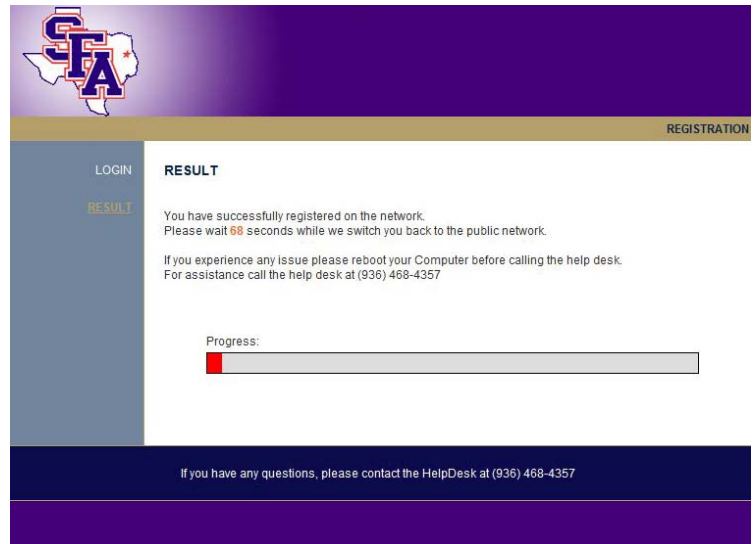
9. If asked, choose to run the file Bradford_Dissolvable_Agent.exe. (NOTE: You can also download and then run the file).



10. If warned that the publisher could not be verified, select, "Run".



11. The registration process takes just over one minute. Once complete, you will be connected to the internet.



12. When asked, it is recommended that you select, "Public Location".

