

Using the Stephen F. Austin State University Virtual Private Network (VPN) on the Mac OS

To use SFASU's Virtual Private Network, go to <https://sfavpn.sfasu.edu> and log in using your domain (also referred to as your active directory or mySFA) username and password.



Unauthorized use of this system is prohibited.

Secure Access SSL VPN

Username
Password
Login Directory

This is an official Stephen F. Austin State University computer system.

As a State of Texas Institution of Higher Education, unauthorized use is prohibited; usage may be subject to security testing and monitoring; misuse is subject to criminal prosecution; and no expectation of privacy except as otherwise provided by applicable privacy laws.

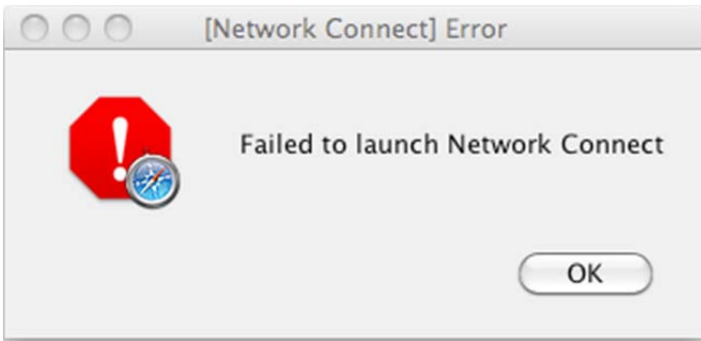
This system including all related equipment, networks, and network devices are provided only for the authorized users. Use of this computer system, authorized or unauthorized, constitutes consent to monitoring of this system. Unauthorized use may subject you to criminal prosecution. Evidence of unauthorized use collected during monitoring may be used for administrative, criminal, or other adverse action. Use of this system constitutes consent to monitoring for these purposes.

Use of this system implies understanding of these terms and conditions.

If asked, select Trust the certificate.



You may get an error that Network Connect failed to launch. If you do, click, "OK".



If Network Connect auto-installs, it will take a minute or two for the page to load.

Please wait...

Launching Network Connect. This may take several minutes.

Unpacking software components...



Cancel

Whether or not Network Connect installs automatically, you will get to this page:

A screenshot of a web interface for a Secure Access SSL VPN. The top navigation bar includes a logo on the left and links for Home, Preferences, Session (05:58:54), Help, and Sign Out on the right. Below the navigation is a search bar with a "Browse" button and a "(tips)" link. The main content area is divided into several sections: 1. A welcome message: "Welcome to the Secure Access SSL VPN, sfasu\ [username] You last signed in on Fri, 18-Feb-2011 10:26:32 CST from [IP]". 2. Web Bookmarks: A section with a "Banner" bookmark. 3. Files: A section with the text "You don't have any files bookmarked." and a "Windows Files" link. 4. Terminal Sessions: A section with a "Launch" button and a text input field containing "P2v.sfasu.edu". 5. Client Application Sessions: A section with two entries: "Network Connect" and "Windows Secure Application Manager", each with a "Start" button.

If Network Connect did not automatically install, click on “Start” for “Network Connect” under “Client Application Sessions. Network Connect will then install.

Please wait...

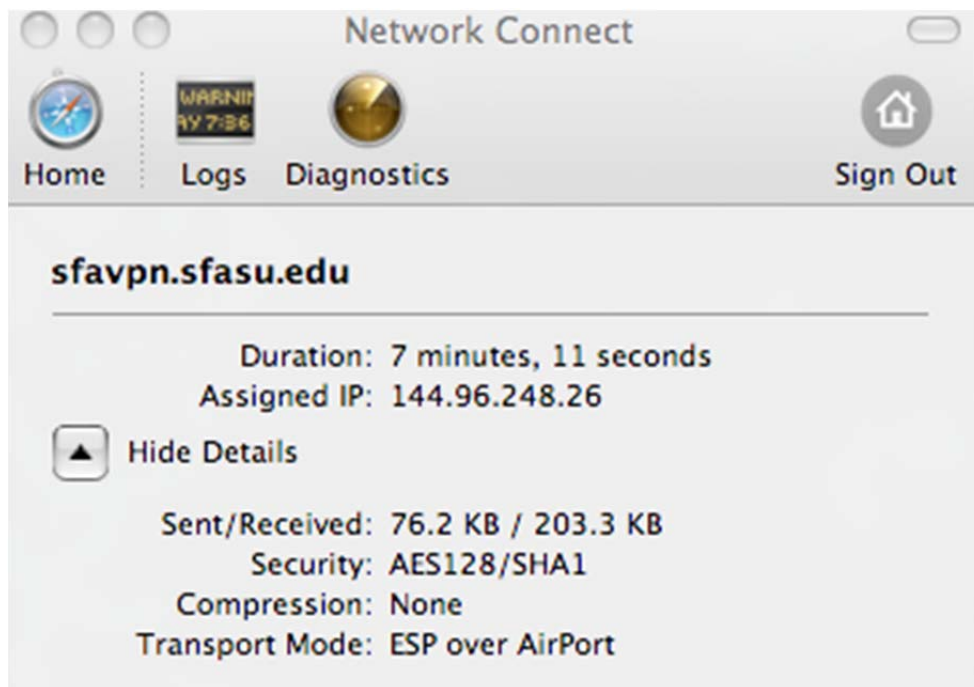
Launching Network Connect. This may take several minutes.

Unpacking software components...



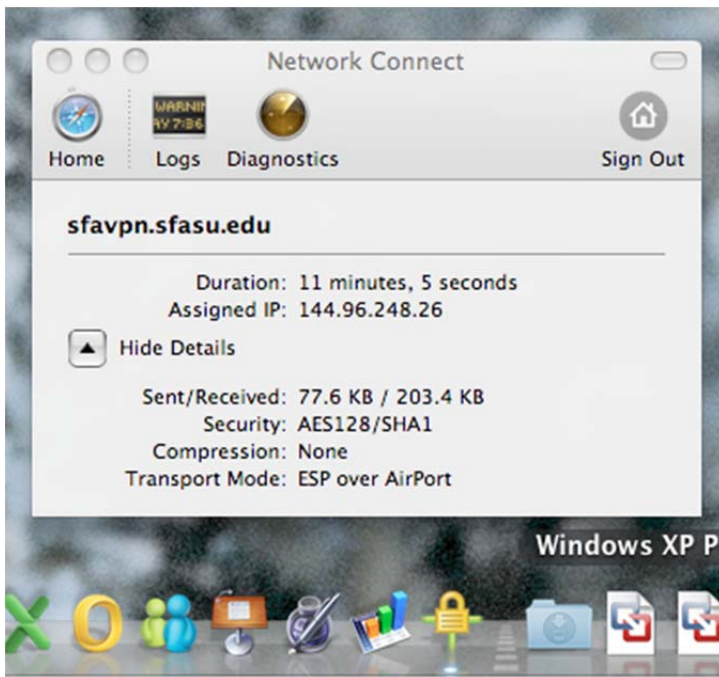
Cancel

Once installed, the Network Connect program will launch.



Keeping Network Connect in the Dock

Once running, you can keep Network Connect in the Dock. To do this, right-click on the “Network Connect” icon in the Dock, select “Options” and “Keep in Dock”.



Once kept in the Dock, subsequent session can be initiated by launching Network Connect from the Dock.

The first time you launch Network Connect from the Dock, you will need to enter, <https://sfavpn.sfasu.edu> in the line labeled, “Sign in at:” and hit the enter key.

