

Using the Stephen F. Austin State University Virtual Private Network (VPN)

To use SFASU's Virtual Private Network, go to <https://sfavpn.sfasu.edu> and log in using your domain (also referred to as your active directory or mySFA) username and password.



Unauthorized use of this system is prohibited.

Secure Access SSL VPN

Username
Password
Login Directory

This is an official Stephen F. Austin State University computer system.

As a State of Texas Institution of Higher Education, unauthorized use is prohibited; usage may be subject to security testing and monitoring; misuse is subject to criminal prosecution; and no expectation of privacy except as otherwise provided by applicable privacy laws.

This system including all related equipment, networks, and network devices are provided only for the authorized users. Use of this computer system, authorized or unauthorized, constitutes consent to monitoring of this system. Unauthorized use may subject you to criminal prosecution. Evidence of unauthorized use collected during monitoring may be used for administrative, criminal, or other adverse action. Use of this system constitutes consent to monitoring for these purposes.

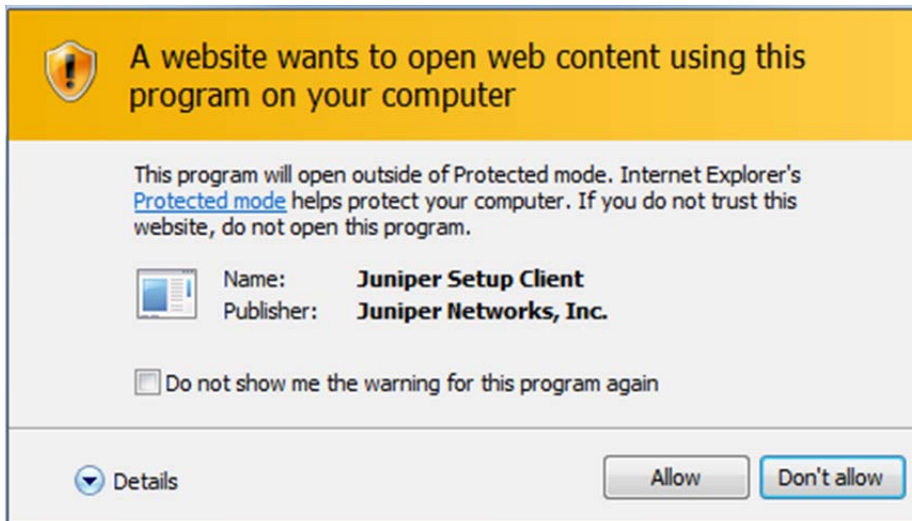
Use of this system implies understanding of these terms and conditions.

It will take a minute or two for the page to load.

Please wait...

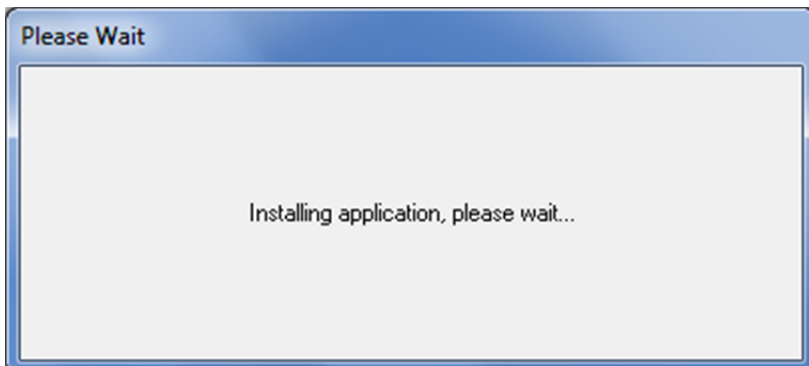
Launching Network Connect. This may take several minutes.

If you are running Windows Vista or Windows 7, you may be asked to allow the program to run. Please allow it to run.



If the User Account Control prompts you to allow a program from Juniper Networks, Inc., please allow. You may be prompted three or four times during the installation process.

The installation process can take up to five minutes. Please be patient.



Once installed, you will see the following page:

The screenshot displays the user interface of a Secure Access SSL VPN. At the top, a dark purple header contains a logo on the left and navigation links for Home, Preferences, Session (05:58:54), Help, and Sign Out on the right. Below the header is a search bar with a 'Browse' button and a '(tips)' link. The main content area is divided into several sections: a welcome message, a 'Web Bookmarks' section with a 'Banner' bookmark, a 'Files' section with a 'Windows Files' link and the message 'You don't have any files bookmarked.', a 'Terminal Sessions' section with a 'Launch' button and a link to 'P2v.sfasu.edu', and a 'Client Application Sessions' section with 'Start' buttons for 'Network Connect' and 'Windows Secure Application Manager'.

Welcome to the Secure Access SSL VPN, sfasu\ [redacted] You last signed in on Fri, 18-Feb-2011 10:26:32 CST from [redacted]

Web Bookmarks [icon] + [dropdown]

[Banner](#) [icon]

Files [icon] + [dropdown]

[Windows Files](#)

You don't have any files bookmarked.

Terminal Sessions [icon] + [dropdown]


Remote Desktop Session to Hostname or IP (eg: test.device.net or 192.168.2.3)

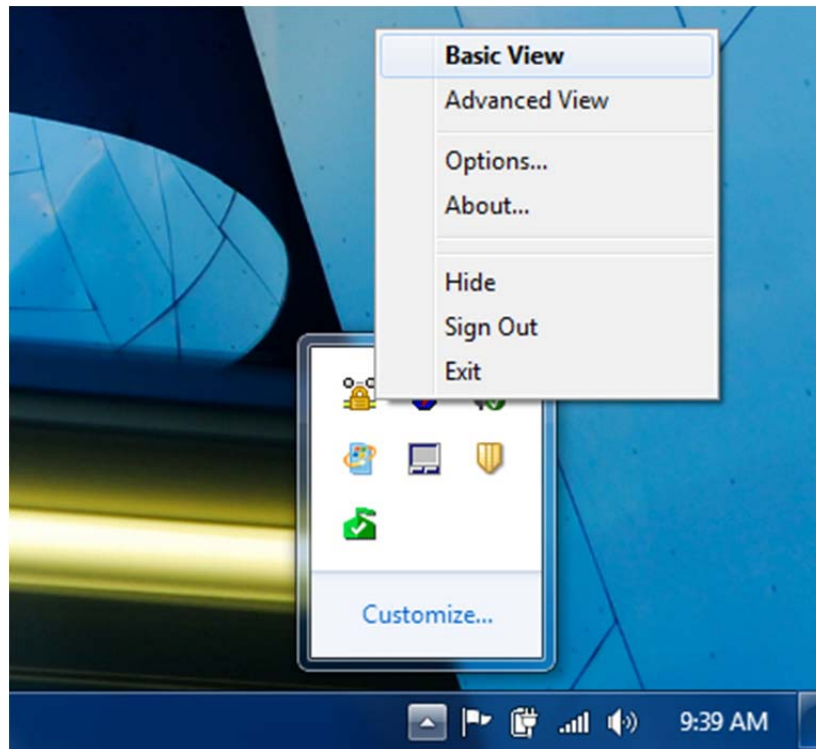
[P2v.sfasu.edu](#)

Client Application Sessions [dropdown]

Network Connect

Windows Secure Application Manager

At this point, the Network Connect application should be running, which means the VPN session has been initiated. To verify this, look at the taskbar for the  icon. You can mouse over or click on this Network Connect icon to get more information about the connection.

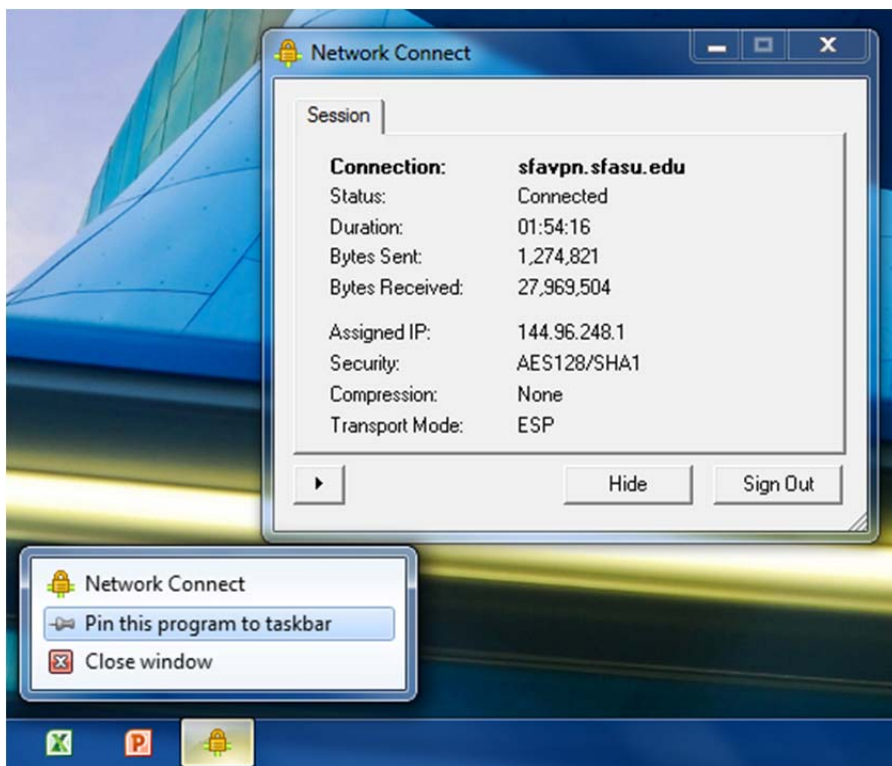


Pinning Network Connect to the Taskbar in Windows 7

Once running, you can pin Network Connect to the taskbar in windows. To do this, right-click on the “Network Connect” icon and select “Basic View”.



Right-click on the Icon and select "Pin this program to taskbar".



Once pinned, subsequent session can be initiated by launching Network Connect from the taskbar.

