



**STEPHEN F. AUSTIN
STATE UNIVERSITY**

NACOGDOCHES, TEXAS

**NEW FACULTY
ORIENTATION
HANDBOOK**

2023 - 2024

Table of Contents

<u>Page(s)</u>	<u>Contents</u>
3-4	Orientation Schedule
5-7	SFA Administration
8-17	Academic Leadership
18-54	Support Units
55-68	2023 New Faculty
69	2023 New Faculty Committee
70-71	Important Links
72	Wi-Fi, mySFA, & Technology

Updated July 2023

Orientation Schedule

Tuesday, August 22, 2023

8:30 a.m.

Breakfast & Group Photo

Cole STEM Building Atrium

9 a.m. - noon

Orientation Sessions

- Welcome from NFO Chair (9 a.m.)
- Mini Sessions (9:05-9:45 a.m.)
 - Diversity, Equity, and Inclusion
 - School of Honors
 - AARC
 - Technology & Tech Support
- Faculty Panel (10 a.m.)
- Associate Dean/Chair Panel (11 a.m.)

Cole STEM Building, Room 401/402

Noon

Lunch

Baker Pattillo Student Center

Support Unit Gallery Walk

5:30 - 7:30 p.m.

Evening Social

Cole Art Center (329 East Main)

Orientation Schedule

Wednesday, August 23, 2023

9 - 10 a.m. Provost's Presentation
STEM 401/402

10 a.m. - noon **Optional Technology Assistance Lab**
In-person assistance with Brightspace and Zoom will be available in Library 219 or in virtually at ctl.sfasu.edu/virtuallab

10 - 11 a.m. **New International Faculty Meeting**
Personnel from the Office of the Provost will provide an information session for new international faculty.

10 a.m. - 3 p.m. **Optional UT Benefits & Open Enrollment Fair**
Visit with benefit vendors and receive benefits information during this event at the Campus Rec Center. This event will continue on Thursday, August 24 from 9 a.m. to noon.

ADMINISTRATION

Gina Oglesbee

Interim President



ADMINISTRATIVE EXPERIENCE

- Interim President, Stephen F. Austin State University (2023–present)
- Vice President for Finance & Administration, Stephen F. Austin State University (20223–present)
- Chief Audit Executive, Stephen F. Austin State University (2005–2022)

EDUCATION

- M.P.A., Stephen F. Austin State University, 2011
- B.B.A., University of Texas

CONTACT INFORMATION

936.468.2201

oglesbeegs@sfasu.edu

Joann Black, Assistant to the President

936.468.2201

blackjoann@sfasu.edu

President's Cabinet



Dr. Lorenzo Smith

Provost and Executive Vice President for Academic Affairs



Carrie Charley

Interim Vice President for
Student Affairs



Michael Coffee

Chief Information Officer



Dr. Michara Delaney-Fields

Chief Diversity Officer



Dr. Lee Furbeck

Vice President for
Enrollment Management



Graham Gamer

Chief Marketing
Communications Officer



Ryan Ivey

Director of Athletics



Judith Kruwell

Interim Vice President for
Finance & Administration



Jill Still

Vice President for
University Advancement



Dr. Charlotte Sullivan

Director of
Governmental Relations

ACADEMIC LEADERSHIP

Lorenzo Smith, Ph.D.

Provost and Executive Vice President of
Academic Affairs



ADMINISTRATIVE & ACADEMIC EXPERIENCE

- Provost and Executive Vice President for Academic Affairs, Stephen F. Austin State University (2021–present)
- Dean, College of Engineering & Computer Science, California State University, Sacramento (2014–2021)
- Associate Dean, College of Engineering & Computer Science, Oakland University (2011–2014)
- Professor, Department of Mechanical Engineering, College of Engineering & Computer Science, Oakland University (2000–2014)

EDUCATION

- Ph.D., Engineering Mechanics, Michigan State University (1999)
- M.S., Mechanical Engineering, Wayne State University (1993)
- B.S., Mechanical Engineering, University of Illinois, Champaign-Urbana (1991)

CONTACT INFORMATION

936.468.2707 | lorenzo.smith@sfasu.edu

Sharon Brewer, Executive Assistant

936.468.2707 | brewersj@sfasu.edu

Marc Guidry, Ph.D.

Associate Provost



ADMINISTRATIVE & ACADEMIC EXPERIENCE

- Associate Provost, Stephen F. Austin State University (2018–present)
- Associate Dean, College of Liberal & Applied Arts, Stephen F. Austin State University (2012–2018)
- Professor of English, Stephen F. Austin State University (2013–present)
- Associate Professor of English, Stephen F. Austin State University (2005–2013)
- Assistant Professor of English, Stephen F. Austin State University (1999–2012)

EDUCATION

- Ph.D., English, Louisiana State University (1997)
- M.A., English, Louisiana State University (1993)
- B.A., English, Minor in Philosophy, Loyola University (1987)

CONTACT INFORMATION

936.468.2707 | mguidry@sfasu.edu

Sharon Brewer, Executive Assistant

936.468.2707 | brewersj@sfasu.edu

Judy Abbott, Ph.D.

Dean, James I. Perkins College of Education



ADMINISTRATIVE & ACADEMIC EXPERIENCE

- Dean and Professor, James I. Perkins College of Education, Stephen F. Austin State University (2010–present)
- Assistant Dean, College of Human Resources & Education, West Virginia University (2006–2010)
- Director, Office of Teacher Education, West Virginia University (2006–2009)
- Associate Professor, Literacy Studies, West Virginia University (2001–2010)

EDUCATION

- Ph.D., Curriculum and Instruction, University of Texas at Austin (1996)
- M.S., Health, Physical Education and Recreation, University of Oklahoma (1984)
- B.S., Education, University of Oklahoma (1977)

CONTACT INFORMATION

936.468.1410 | abbottj@sfasu.edu

Heather Hawkins, Assistant to the Dean

936.468.1410 | hawkinshd@sfasu.edu

Timothy Bisping, Ph.D.

Dean, Nelson Rusche College of Business



ADMINISTRATIVE & ACADEMIC EXPERIENCE

- Dean and Professor, Nelson Rusche College of Business, Stephen F. Austin State University (2015–present)
- Interim Dean and Associate Professor, College of Business, Louisiana Tech University (2014–2015)
- Associate Dean for Graduate Programs & Research and Associate Professor, College of Business, Louisiana Tech University (2011–2014)
- Chair and Associate Professor, Department of Economics, Finance, and Insurance & Risk Management, University of Central Arkansas (2010–2011)

EDUCATION

- Ph.D., Economics, Oklahoma State University (1997)
- M.A., Economics, Wichita State University (1993)
- B.B.A., Economics, Wichita State University (1991)

CONTACT INFORMATION

936.468.3101 | bispingto@sfasu.edu

Kristi Howard, Assistant to the Dean

936.468.3101 | howardkd3@sfasu.edu

Gary Wurtz, DMA

Dean, Micky Elliott College of Fine Arts



ADMINISTRATIVE & ACADEMIC EXPERIENCE

- Dean and Professor, Micky Elliott College of Fine Arts, Stephen F. Austin State University (2022–present)
- Interim Dean, Micky Elliott College of Fine Arts, Stephen F. Austin State University (2021–2022)
- Director, School of Music, Stephen F. Austin State University (2016–2021)
- Interim Director, School of Music, Stephen F. Austin State University (Spring 2016)
- Professor, Trumpet and Jazz Band, School of Music, Stephen F. Austin State University (1992–2016)

EDUCATION

- DMA, Trumpet Performance, University of North Texas (2001)
- M.M.E., University of North Texas (1987)
- B.M.E., West Texas State University (1985)

CONTACT INFORMATION

936.468.2801 | gwurtz@sfasu.edu

Florence Lunsford, Assistant to the Dean

936.468.2801 | lunsfordfa@sfasu.edu

Hans Williams, Ph.D.

Dean, Arthur Temple College of Forestry & Agriculture



ADMINISTRATIVE & ACADEMIC EXPERIENCE

- Dean and Professor, Arthur Temple College of Forestry and Agriculture, Stephen F. Austin State University (2015–present)
- Associate Dean, Arthur Temple College of Forestry and Agriculture, Stephen F. Austin State University (2009–2015)
- Kenneth Nelson Distinguished Professor of Forestry, Stephen F. Austin State University (2004–present)
- Professor of Forestry, Stephen F. Austin State University (2003–present)
- Associate Professor of Forestry, Stephen F. Austin State University (1999–2003)

EDUCATION

- Ph.D., Forestry, Auburn University (1989)
- M.S., Forestry, Clemson University (1983)
- B.S., Forestry, Purdue University (1980)

CONTACT INFORMATION

936.468.3304 | hwilliams@sfasu.edu

Christen Myles, Assistant to the Dean

936.468.3304 | mylescj@sfasu.edu

M. Dustin Knepp, Ph.D.

Dean, College of Liberal & Applied Arts



ADMINISTRATIVE & ACADEMIC EXPERIENCE

- Dean and Professor, College of Liberal and Applied Arts, Stephen F. Austin State University (2022–present)
- Chair and Professor, Department of Modern Languages and Literatures, California State University, Bakersfield (2021–2022)
- Chair, Department Chairs Leadership Council, California State University, Bakersfield (2020–2022)
- Co-Director, Center for Social Justice, California State University, Bakersfield (2017–2022)
- Chair and Associate Professor, Department of Modern Languages and Literatures, California State University, Bakersfield (2016–2021)

EDUCATION

- Ph.D., Spanish, State University of New York, Albany (2010)
- M.A., Spanish — Hispanic Cultures, University of Texas at San Antonio (2006)
- B.A., Spanish, Angelo State University (2002)

CONTACT INFORMATION

936.468.2803 | Dustin.Knepp@sfasu.edu

Gina Ajero, Assistant to the Dean

936.468.2803 | ajerogl@sfasu.edu

Kimberly M. Childs, Ph.D.

Dean, College of Sciences & Mathematics



ADMINISTRATIVE & ACADEMIC EXPERIENCE

- Dean and Professor, College of Sciences and Mathematics, Stephen F. Austin State University (April 2012–present)
- Interim Dean, College of Sciences and Mathematics, Stephen F. Austin State University (August 2010–April 2012)
- Associate Dean, College of Sciences and Mathematics, Stephen F. Austin State University (2008–August 2010)
- Professor, Department of Mathematics and Statistics, Stephen F. Austin State University (2006–present)

EDUCATION

- Ph.D., Curriculum and Instruction/Mathematics Education, Texas A&M University (1995)
- M.S., Mathematics Teaching, Stephen F. Austin State University (1988)
- B.S., Mathematics, Dallas Baptist University (1977)

CONTACT INFORMATION

936.468.2805 | kchilds@sfasu.edu

Tricia Cain, Assistant to the Dean

936.468.2805 | tricia.cain@sfasu.edu

Sheryll Jerez, Ph.D.

Interim Dean, Research & Graduate Studies



EDUCATION

- Ph.D., Agricultural Engineering, University of Illinois at Urbana-Champaign (2007)
- M.S., Biological and Agricultural Engineering, Kansas State University (2002)
- B.S., Agricultural Engineering, University of the Philippines at Los Baños (1996)

CONTACT INFORMATION

936.468.2237 | jerezs@sfasu.edu

Katherine Lanigan, Assistant to the Dean

936.468.2237 | katherine.lanigan@sfasu.edu

SUPPORT UNITS

Academic Assistance & Resource Center



M.E. McWilliams, Director

mmcwilliams@sfasu.edu

936.468.1439

<http://www.sfasu.edu/aarc>

Steen Library, 1st Floor

The Academic Assistance and Resource Center (AARC) is an award-winning learning assistance program that provides free peer tutoring for many entry-level courses as well as some upper level courses. We are 150 Lumberjack students helping other students make their best grades. We make getting help easy at walk-in tables, supplemental instruction (SI) groups, appointments, and via our Online Writing Lab (OWL). We assisted 3,000 Lumberjacks and had 20,000 visits last year! And our success rate (A,B,C in course tutored) was 89% for those who had five or more visits for a given subject! We know that the professor is the student's number one resource for success, but after that, there is AARC. Thank you for referring students to our services!

Bookstore



Mindalena Adams, Store Manager

sm044@bncollege.com

936.468.1160

sfasu.bncollege.com

BPSC, 1st Floor

Barnes and Noble at SFASU is the main destination on campus for students to purchase textbooks and course materials. The store also offers a large selection of SFA apparel, SFA gear, and SFA supplies.

Campus Recreation



Ken Morton, Director

mortonkw@sfasu.edu

936.468.3507

<http://www.sfasu.edu/campusrec/>

Campus Recreation Center Office

Campus Recreation offers memberships to the Recreation Center for faculty and staff members. Members of the Rec can work out in the state-of-the-art fitness facility, rent outdoor gear, sign up for a trip, climb the rock wall, swim in the pool, experience a group fitness class, or play intramurals. Campus Recreation offers special events throughout the year as well as swim lessons and summer camps for kids. Additional information is available on the website above.

Center for Career & Professional Development



Brent McLemore, Director

Brent.McLemore@sfasu.edu

936.468.3305

<http://www.sfasu.edu/ccpd/>

BPSC, Room 3.303

The Center for Career and Professional Development (CCPD) exists to empower students and alumni to achieve life-long career success. We fulfill this mission through individualized assistance, diverse career development programs, and collaboration with both internal and external partners concentrated on career goal achievements.

Center for Teaching & Learning



Megan Weatherly, Interim Director

mweatherly@sfasu.edu

936.468.1735

ctl.sfasu.edu

Steen Library, Room 210

The mission of the CTL is to support, strengthen, and promote teaching effectiveness and student learning. The CTL is responsible for 1) support of and training on the use of Brightspace and related technologies for faculty, staff, and students; 2) coordination and reporting of distance education programs; 3) support for the development of face-to-face, online, hybrid, and livestream courses; and 4) educator development workshops on a variety of teaching and learning topics.

Counseling Services



Clare Fite, Director

fitec@sfasu.edu

936.468.2401

<http://www.sfasu.edu/counselingservices/>

Rusk Building, 3rd Floor

Counseling Services is staffed with full-time, licensed professional clinicians who provide brief and confidential individual, group, and couples counseling, as well as crisis intervention services, for all SFA students at no charge. We welcome faculty to refer students to us. Appointments may be made in person or by telephone. In crisis situations, we encourage faculty to walk a student over immediately (a call first is helpful, if possible). We also provide consultation to faculty and staff, and offer presentations and training on a variety of mental health topics. Please check the [Faculty & Staff Referral Guide](#) for more information.

Disability Services



Tiffany Rivers, Director/ADA Coordinator

trivers@sfasu.edu

936.468.3004

<http://www.sfasu.edu/disabilityservices/>

Human Services Building, Room 325

Stephen F. Austin State University's Disability Services is committed to providing equal opportunities in higher education to students with disabilities. The university shares responsibility with the student for modifying campus facilities and programs to meet individual needs. SFA students with disabilities have access to tools and resources that will assist them in managing the day-to-day activities of college life.

Faculty Senate



CC Conn, Chair (2023-2024)

conncc@sfasu.edu

936.468.1031

<http://www.sfasu.edu/facsenate/>

The SFA Faculty Senate has worked diligently to serve the faculty through representation, active leadership in working toward common goals, and in pursuing the ideal of shared governance at SFA. Through Senate committees, meaningful work is planned and carried out to move SFA in a positive direction to create the best working and learning environment possible. Download the Senate's "A Colleagues' Survival Guide" on the Faculty Senate website.

Office of General Counsel



Damon Derrick, General Counsel

derrickdc@sfasu.edu

936.468.4305

<http://www.sfasu.edu/genccounsel/>

Austin Building, Room 310

The General Counsel provides legal oversight and advice on matters related to the University. As the in-house attorney for Stephen F. Austin State University, the General Counsel serves as a problem solver, legal trouble shooter, and adviser to the University, administration, faculty, staff, and others acting on the University's behalf. The General Counsel does not serve as anyone's personal attorney and acts only on the University's behalf.

Graphic Shop



Jimmy McDaniel, Supervisor

mcdanieljw@sfasu.edu

936.468.2348

<https://www.sfasu.edu/auxservices/student-services/graphic-shop>

BPSC, Room 1.208

Graphic Shop provides photocopying, off-set printing, typesetting, and finishing services to all university departments, offices and organizations.

Human Resources



John Wyatt, Director

wyattjohn@sfasu.edu

936.468.2304

<http://www.sfasu.edu/hr/>

Austin Building, Room 201

SFA Human Resources is the department that manages numerous matters involving employees, such as hiring, compensation/ classification, training, employee relations, and coordination of benefits.

Information Technology Services

Under the leadership of CIO Michael Coffee, Information Technology Services (ITS) is responsible for developing and maintaining the computer systems and infrastructure used by the faculty, staff, students and guests of SFA. Services for faculty include: support for SFA tagged devices, classroom technology support, telephone support, software development and deployment, password reset, IT project management, public safety technology, and online systems support (i.e., mySFA, Office 365, email). The ITS staff with whom you will likely work the most include:



**Mary Reed, Assistant Director for
Classroom Support**

mary.reed@sfasu.edu

936.468.7690

<http://help.sfasu.edu>



**Tim Lewallen, Assistant Director for
Customer Service**

wattjohn@sfasu.edu

936.468.HELP

<http://help.sfasu.edu>

Steen Library, Lumberjack Learning Lab

The Help Desk is run by ITS to provide IT support to faculty, staff, and students. Call them at 936.468.HELP, visit them at help.sfasu.edu, or email them at help@sfasu.edu.

Lumberjack Learning Commons



Megan Weatherly, Executive Director

mweatherly@sfasu.edu

936.468.1735

Steen Library, Room 220F

The Lumberjack Learning Commons (LLC) is a collection of six units (AARC, CTL, SFA Makerspace, OIP, SSC, and the future Professional and Continuing Education (PaCE) Center) dedicated supporting student academic success and experiential learning. The mission of the LLC is to strengthen teaching and learning experiences, motivate students to persist in their academic journeys, and support students' academic and personal development.

SFA Makerspace

Part of the Lumberjack Learning Commons, the SFA Makerspace is an accessible, interdisciplinary area open to all students, faculty, and staff. Our goal is to facilitate the work of making by teaching clients to use the technologies we have available, assisting them with questions and troubleshooting, and leading them to paths for ideation, iteration and production. The Makerspace's primary goal is to support student learning, but we also support research, independent projects and our campus maker community. Staff in the space promote a growth mindset; we embrace failure not as a setback but a stepping stone to learning. Our constructionist approach helps students acquire knowledge by building artifacts that they can share with others. Makerspace staff include:



Shannon Bowman, Makerspace Librarian

bowmansl1@sfasu.edu

936.468.1528

<http://www.sfasu.edu/makerspace>

Steen Library, 1st Floor



Chase James, Makerspace Technician

chase.james@sfasu.edu

936.468.1373

<http://www.sfasu.edu/makerspace>

Steen Library, 1st Floor

Office of Diversity, Equity, & Inclusion



Dr. Michara Delaney-Fields,
Chief Diversity Officer

michara.delaney-fields@sfasu.edu

936.468.6300

<http://www.sfasu.edu/odei>

McKibben Building, Third Floor

The Office of Diversity, Equity and Inclusion supports the mission of Stephen F. Austin State University by engaging in, celebrating, cultivating, and fostering a welcoming environment for all. We are committed to amplifying a campus culture that nurtures belonging, enriches learning and development, enhances research, and celebrates similarities and differences so that all members of the community can thrive and succeed authentically.

Office of Institutional Effectiveness



John Calahan, Director

calahanje@sfasu.edu

936.468.1038

<http://www.sfasu.edu/oie>

Ferguson Building, Room 290

The Office of Institutional Effectiveness provides support for strategic planning as well as the continuous improvement of all academic programs, educational support units, and administrative units at Stephen F. Austin State University (SFA). The office provides oversight, training, analysis, and support for the ongoing assessment of administrative operations and student learning outcomes.

Office of International Programs



Heather Catton, Director

hcatton@sfasu.edu

936.468.5597

<https://www.sfasu.edu/international>

Steen Library, Room 103

The Office of International Programs (OIP) oversees international student recruitment, admissions, orientation, visa status, and retention efforts. It also facilitates visas and adherence to regulations. Additionally, OIP promotes and coordinates study abroad programs (SFA, exchange, independent), scholarships, conversations with potential exchange partners. The office also offers cultural programming to groups across campus.

Office of Multicultural Affairs



Dr. Veronica Beavers, Director

vbeavers@sfasu.edu

936.468.1073

<https://www.sfasu.edu/multicultural>

BPSC, Room 3.101

The mission of the SFA Office of Multicultural Affairs (OMA) is to create a campus environment where all students, staff and faculty feel welcome and included. We create networks of support and develop programs for students, staff and faculty that provide opportunities for meaningful cross cultural interactions and learning experiences that promote respect for diversity. Through our efforts, we strive to create a campus climate in which the benefits of multiculturalism, diversity and social justice can be appreciated. In addition, we work with student organizations to host cultural celebrations and activities that are educational and that work to enhance our students' abilities to succeed in a global community.

Office of Research & Graduate Studies



Dr. Sheryll Jerez, Interim Dean

jerezs@sfasu.edu

936.468.2807

<https://www.sfasu.edu/academics/orgs>

LAN, Room 425

The mission of the Office of Research and Graduate Studies is to support and promote the research, scholarly and creative activities of the Stephen F. Austin State University community while encouraging compliance and scholarly integrity. SFA seeks to afford qualified students the opportunity and a supportive environment in which to gain sufficient mastery of their chosen fields so, by virtue of their depth and breadth of knowledge and the extent of their expertise, they may contribute significantly to those fields.

Office of Strategic Analytics & Institutional Research



Karyn Hall, Director

khall@sfasu.edu

936-468-3806

<https://www.sfasu.edu/ir>

Rusk Building, Room 106

The Office of Strategic Analytics & Institutional Research (SAIR) provides evidence and analyses for data-informed decision-making and works to ensure and promote the integrity of university data and reports. SAIR works closely with university leadership and employees across each division. Examples of internal support materials include the Fast Facts for Lumberjacks publication, interactive dashboards, and other analytical information and data visualizations.

Office of Student Financial Assistance



Rachele Garrett, Director

nixonhr@sfasu.edu

936.468.2768

<http://www.sfasu.edu/admissions-and-aid>

Austin Building, 1st Floor

The Office of Student Financial Assistance works with students to complete FAFSA, to disburse information regarding different types of aid, to assist students with accepting and maintaining aid, to provide students with loan information, and more.

Office of Title IX



Lissy Turner, Director

lissy.turner@sfasu.edu

936.468.8292

<https://www.sfasu.edu/titleix>

McKibben Building, Suite 304

The Title IX office supports the university's commitment by offering training, programs and processes that promote an inclusive, diverse and supportive environment consistent with the SFA Way.

Student Affairs

Under the leadership of Interim Vice President for Student Affairs, the Division of Student Affairs strives to fulfill the university's mission through establishing personal connections with students, creating engaging and dynamic learning opportunities, and providing programs and services designed to help students meet their personal and academic goals. The Student Affairs administrative staff with whom you will likely work the most include:



**Dr. Andrew Dies, Assistant Vice President
for Student Affairs and Dean of Students**

andrew.dies@sfasu.edu

936.468.7249

<https://www.sfasu.edu/deanofstudents>

Rusk Building, Room 301



**George Montgomery, Assistant Dean of
Students**

george.montgomery@sfasu.edu

936.468.7249

<https://www.sfasu.edu/deanofstudents>

Rusk Building, Room 301

Student Conduct Office



Brendan Lardie, Coordinator

brendan.lardie@sfasu.edu

936.468.7249

Rusk Building, Room 301

The mission of the Student Conduct Office is to guide students through the conduct process in a learner-focused manner that provides a foundation for success, a commitment to responsible citizenship in a global and diverse community, and a desire to make positive lifestyle choices based on the core values of integrity, honesty, accountability, civility and respect.

Orientation & Transition Programs



Brittany Beck, Director

beckbn1@sfasu.edu

936.468.6653

<http://www.sfasu.edu/orientation/>

BPSC, Room 3.301

It is the mission of the Stephen F. Austin Orientation office to provide Orientation programs to all new students and their parents that will aid families in the college transition process; that will inform students of available educational opportunities; and will seek to integrate students and their families into the Stephen F. Austin State University community.

Payroll Office



Renea McDaniel, Manager

mcdanielrf@sfasu.edu

936.468.2172

<http://www.sfasu.edu/controller/payroll/>

Austin Building, Room 206G

Stephen F. Austin State University's Payroll Office is committed to providing the very best employee service possible. We want to ensure that our employees are paid accurately and on a timely basis. Payroll also assists employees with time reporting, leave balances, direct deposit, comp time, compensation, stipends, and more.

Registrar



Mickey Diez, Registrar

Mickey.Diez@sfasu.edu

936.468.2120

<http://www.sfasu.edu/registrar/>

Rusk Building, Room 202

The Registrar's Office provides and assists faculty with online services including: rosters, grade input and grade changes, curriculum changes, individual class schedules, census attendance and the course catalog. This office also provides campus-wide, required FERPA training through myTraining and assists with any questions regarding specific FERPA situations.

School of Honors



Dr. Michael Tkacik, Director

mtkacik@sfasu.edu

936-468-2813

<http://www.sfasu.edu/honors/>

McKibben Building, Room 381

The objective of the School of Honors is to promote the intellectual curiosity of the University's most capable students, thus enabling them to confront complex issues. To accomplish this objective, the program offers Honors classes as well as Honors contracts (whereby the student will complete an additional project in an instructor's class which, if completed, will grant Honors credit for the class). Please contact Michael Tkacik for further information.

Steen Library



Jonathan Helmke, Director

helmkej@sfasu.edu

936.468.1537

<https://library.sfasu.edu>

Steen Library, Room 203C

The Ralph W. Steen Library furthers SFA's mission by 1) offering expert research consultations to faculty, students, and groups, as well as instruction to classes, 2) supporting faculty in the development and creation of online academic journals and scholarship through ScholarWorks, 3) and providing access to electronic books, journals, streaming films, East Texas' history and the University's archives. Interlibrary Loan is also available to support research activities.

Student Business Services



Michaelyn Greene, Director of Treasury
and Student Business Services

greenemf@sfasu.edu

936.468.3005

[http://www.sfasu.edu/controller/
businessoffice/](http://www.sfasu.edu/controller/businessoffice/)

Austin Building, Room 204

Student Business Services provides services to students, faculty and staff, including (but not limited to): posting payments to student accounts, posting exemptions, validating student IDs, cashing checks up to \$50, posting student tuition contracts, initiating re-funds and cash advances, depositing funds into department revenue accounts, dispersing payroll checks for those without direct deposit, and processing course late-add and reinstatement requests.

Baker Pattillo Student Center



Nick Stallworth, Director

nstallworth@sfasu.edu

936.468.3401

<https://www.sfasu.edu/student-services/>

BPSC, Room 1.301

The Student Center includes the following services: ballrooms, Barnes & Noble, Card Services, Convenience Store, Information Desk, Post Office, Printing Services, Reservations Office, and various restaurants. Multiple departments also have offices in the BPSC, including Dining Services, Multicultural Affairs, Orientation, Student Publications, the Veterans Resource Center, and more.

Student Success Center



Raquel Skidmore, Director

skidmorerr@sfasu.edu

936.468.5803

<http://www.sfasu.edu/studentsuccess/>

Steen Library, Room 104

The Student Success Center supports all undergraduates through intentional programs and services designed to empower students. The SSC works to ensure all students have access to the necessary resources and tools to accomplish their goals as a student and beyond graduation. The SSC's services and programs include: academic advising for undeclared, dual credit, and exploring students; Generation Jacks (GenJacks) program for first-generation college students; Jacks PASS alternative admissions program; SSC Peer Mentoring Program; SFA Student Success Course (SFAS 1101 for freshman and transfer students); Smith Hutson and Buddy Low Scholarship Programs; and the Texas Success Initiative (TSI).

Travel Office



Brittany Goad, Disbursement Manager

traveldesks@sfasu.edu

936.468.2432

<http://www.sfasu.edu/controller/travel/>

Austin Building, Room 132

The Travel Office works with individuals across campus with travel reimbursement guidelines, processing and reimbursement.

University Marketing Communications



Graham Garner,
Chief Marketing Communications Officer

graham.garner@sfasu.edu

936.468.2605

<https://www.sfasu.edu/umc>

Austin Building, Room 121

***Please contact UMC for your complimentary professional head shot.**

University Marketing Communications (UMC) is dedicated to increasing awareness of and support for SFA and its mission. Services provided include website development, writing, copyediting, graphic design, photography and videography. UMC serves as a liaison to the news media, manages the university's official social networks, and publishes an electronic newsletter for the campus. Additionally, the department produces Sawdust, the magazine of the Alumni Association.

University Police Department



John Fields, Chief of Police

john.fields@sfasu.edu

936.468.2252

<http://www.sfasu.edu/parking/>

Wilson Parking Garage, 1st Floor

The mission of SFA's University Police Department is to provide a safe environment to all students, staff, faculty, and guests through respectful, fair, and equitable policing and community engagement. We strive to provide excellence, integrity, and professional interaction with our campus community.

Parking Services is an important element of UPD. Parking Services strives to provide students, faculty, staff, and visitors with safe and reasonable access to university facilities. All students, faculty, staff, and visitors are required to display a parking permit when parked on campus. Please contact Parking Services for guest speaker and event permits sponsored by SFA departments. Parking regulations are enforced at all times.

Veterans Resource Center



Stesha Colby-Lynch, Coordinator

stesha.colby-lynch@sfasu.edu

936.468.6494

<https://www.sfasu.edu/vrc/>

BPSC, Room 1.102

The Veterans Resource Center (VRC) at SFA provides a space for veterans, dependents of veterans, and ROTC members to gather, socialize and form relationships with others that can provide networks of support that lead to feelings of inclusion at SFA. This space will be a hub for veterans programming efforts that can include connections with veteran faculty members and access to veterans' resources provided by the university and outside agencies.

2023-24
NEW FACULTY

Rusche College of Business



Dr. Brandon Ater
Assistant Professor
Accountancy
Ph.D., Virginia Polytechnic University



Ms. Kathym Blevins
Lecturer
Management & Marketing
M.B.A., Stephen F. Austin State University



Dr. Matthew Jaramillo
Lecturer
Economics & Finance
Ph.D., Texas Tech University



Dr. Juliana Lilly
Lecturer
Business Communication & Legal Studies
Ph.D., University of Texas at Arlington

Rusche College of Business



Mr. George Paul

Lecturer

Business Communication & Legal Studies
M.B.A., Middlebury Institute of International
Studies



Dr. Kristen Waddell

Lecturer

Business Communication & Legal Studies
Ph.D., University of Texas at Tyler



Dr. Hannah Wich

Assistant Professor

Economics & Finance
Ph.D., Iowa State University

Perkins College of Education



Dr. Ahmed Al-Ramthan
Assistant Professor
Kinesiology & Health Science
Ph.D., Texas A&M University



Dr. Amber Chelette
Assistant Professor
Kinesiology & Health Science
Ph.D., University of Houston



Mr. John Gainer
Clinical Instructor
Human Sciences
B.S., Embry Riddle Aeronautical University



Dr. Allan Hauck
Visiting Professor
Human Sciences
Ph.D., University of Maryland

Perkins College of Education



Mr. Kevin Hill
Clinical Instructor
Human Sciences
A.A.S., Kilgore College



Dr. Melissa Hulings
Assistant Professor
Education Studies
Ph.D., Oklahoma State University

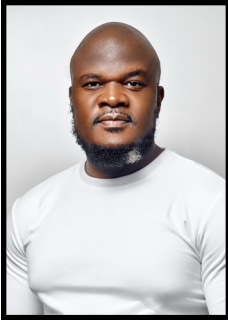


Ms. Amani Khan
Visiting Lecturer
Human Sciences
M.S., Texas Tech University



Dr. Lori Kupczynski
Associate Professor
Human Services & Educational Leadership
Ed.D., Texas A&M University—Kingsville

Perkins College of Education



Dr. Henry Mukhwana
Clinical Instructor
Human Sciences
Ph.D., University of Nairobi



Dr. Michael Munro
Clinical Instructor
Education Studies
Ph.D., Texas A&M University



Dr. Muswamba Mwamba
Assistant Professor
Kinesiology & Health Science
Ph.D., University of North Carolina



Dr. Wycliffe Njorarai
Chair
Kinesiology & Health Science
Ph.D., Kenyatta University

Perkins College of Education



Dr. Fatemeh Orooji
Associate Professor
Human Sciences
Ph.D., Louisiana State University



Dr. Brandi Sawyer
Assistant Professor
Human Services & Education Leadership
Ph.D., Texas A&M University—Commerce



Dr. Richard Skuza
Visiting Clinical Instructor
Human Services & Education Leadership
Ed.D., Texas A&M University



Mr. Allen Wilson
Clinical Instructor
Human Sciences
M.A.S., Embry Riddle Aeronautical University

Elliott College of Fine Arts

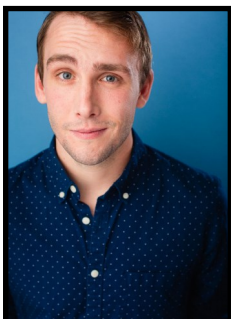


Mr. Benjamin Anderson

Assistant Professor

Art

M.F.A., Bowling Green State University



Mr. Zeke Bocklage

Visiting Assistant Professor

Theatre & Dance

M.F.A., Western Illinois University



Dr. Robert Eason

Assistant Professor

Music

D.M.A., Indiana University



Mr. Derek Johnson

Assistant Professor

Art

B.F.A., Stephen F. Austin State University

Elliott College of Fine Arts



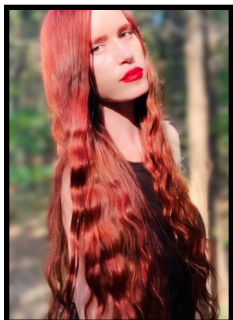
Mr. Benjamin Kramer
Assistant Professor
Theatre & Dance
M.F.A., Minnesota State University



Dr. Dan Li
Visiting Assistant Professor
Art
Ph.D., University of Houston



Dr. Jenna Sehmman
Assistant Professor
Music
D.M.A., University of Iowa



Ms. Jessica Thomas
Assistant Professor
Theatre & Dance
M.F.A., Wilson College

Temple College of Forestry & Agriculture



Dr. Reuber Antoniazzi
Assistant Professor
Forestry
Ph.D., Instituto de Ecología Mexico



Dr. Jenny Rashall
Assistant Professor
Environmental Science
Ph.D., University of Texas at Arlington



Dr. Douglas Smith
Chair and Associate Professor
Agriculture
Ph.D., Texas A&M University

College of Liberal & Applied Arts



Ms. Bridget Adams
Assistant Professor
English & Creative Writing
M.F.A., Bowling Green State University



Dr. Roslyn Fraser
Associate Professor
Anthropology, Geography, & Sociology
Ph.D., University of Missouri



Ms. Lenola Wyatt
Assistant Professor
Social Work
M.S.W., Stephen F. State University

College of Sciences & Mathematics



Ms. Mariza Garcia
Clinical Instructor
Nursing
M.S.N., University of Texas



Dr. William Harris III
Associate Professor
Computer Science
Ph.D., University of Texas



Dr. Md. Istiaq Hossain
Assistant Professor
Mathematics & Statistics
Ph.D., University of Louisiana



Mr. Edward Ironsmith IV
Assistant Professor
Computer Science
M.Sc., Stephen F. Austin State University

College of Sciences & Mathematics



Ms. Irasema Kinney
Clinical Instructor
Nursing
B.S.N., Stephen F. Austin State University



Ms. Tonya LaForge
Clinical Instructor
Nursing
M.S.N., University of Texas



Mr. Colin Lawson
Assistant Professor
Mathematics & Statistics
M.S., Sam Houston State University



Ms. Florence Ochieze
Clinical Instructor
Nursing
M.H.A., Texas Woman's University

College of Sciences & Mathematics



Dr. Md. Shohel Rana
Assistant Professor
Computer Science
Ph.D., University of Southern Mississippi



Dr. Christal Schoen
Assistant Professor
Mathematics & Statistics
Ph.D., Central Michigan University

New Faculty Orientation Committee



Dr. Joyce Johnston
2023 Committee Chair
Associate Dean
Liberal & Applied Arts



Dr. Jim Adams
Associate Professor
Sciences & Mathematics



Ms. Eden Collins
Assistant Professor
Fine Arts



Dr. Jamie Humphries
Assistant Professor
Business



Ms. Kimberly Odems
Senior HR Representative
Human Resources



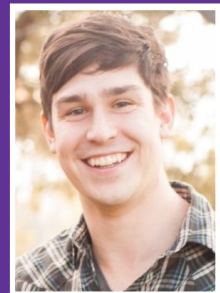
Mr. Justin Pelham
Clinical Instructor
Education



Dr. Anusha Shrestha
Assistant Professor
Forestry & Agriculture



Ms. Megan Weatherly
Executive Director
Lumberjack Learning
Commons



Dr. Tyler Welsh
Assistant Professor
Liberal & Applied Arts

Important Links

Academic Affairs: <http://www.sfasu.edu/acadaffairs/>

Academic Affairs Committees: <https://www.sfasu.edu/acadaffairs/committees>

Academic Calendars: <https://www.sfasu.edu/acadaffairs/calendars/academic-calendars>

Admissions: <http://www.sfasu.edu/admissions-and-aid>

Benefits: <https://www.sfasu.edu/hr/faculty-staff/benefits>

Campus Map: <https://www.sfasu.edu/docs/campus-map.pdf>

Course Equivalency Guide: https://ssb.sfasu.edu/sg/wf_admissions.p_course_equivalency

Course Information: <https://orion.sfasu.edu/courseinformation/>

Brightspace/D2L (Desire to Learn): <https://d2l.sfasu.edu>

Employee Scholarship Program (LEAP): <https://www.sfasu.edu/hr/faculty-staff/benefits/lumberjack-education-assistance-program>

Employee Wellness: <https://www.sfasu.edu/hr/faculty-staff/benefits/employee-wellness>

General Bulletin: <http://catalog.sfasu.edu/>

Help Desk: <http://help.sfasu.edu>

Holiday Schedule: <http://www.sfasu.edu/hr/123.asp>

Human Resources: <http://www.sfasu.edu/hr/>

Insurance: <https://www.sfasu.edu/hr/faculty-staff/benefits/insurance>

Leave: <https://www.sfasu.edu/hr/faculty-staff/leave>

Parking Services and Map: <http://www.sfasu.edu/parking/>

Important Links

Retirement: <https://www.sfasu.edu/hr/faculty-staff/benefits/retirement>

Schedule of Classes: https://ssb.sfasu.edu:9060/prod/bwckschd.p_disp_dyn_sched

SFAS 1101: <https://www.sfasu.edu/sfas1101/>

SFA Press: <http://www.sfasu.edu/sfapress/>

Student Organizations: <https://www.sfasu.edu/student-life/student-engagement/connection-involvement/student-organizations>

Student Testing Services: <http://www.sfasu.edu/ccs/testing/>

Teaching Excellence Awards: <https://www.sfasu.edu/acadaffairs/awards-honors/teaching-excellence-awards>

University Policy Manual: <https://www.sfasu.edu/policies/>

University Records Management: <https://library.sfasu.edu/etrc/records>

Wellness Release Time: <https://www.sfasu.edu/hr/faculty-staff/benefits/wellness-release>

Wi-Fi, mySFA, & Technology

Wi-Fi

SFA has three wireless access options: Eduroam, SFA-WIRELESS, and SFA-GUEST. All provide the same performance; however, Eduroam is preferred, as once you are registered with it, you will have wifi access at other participating institutions. Notes:

- Eduroam and SFA-WIRELESS require your mySFA username and password.
- SFA-GUEST does not require a username. The password is "golumberjacks" (all one word, no quotes).

For more information, visit help.sfasu.edu or call 936.468.HELP.

mySFA

mySFA is the portal through which many SFA services are accessed. As a faculty member, mySFA will be particularly important, as it is how you will access:

- class rosters
- midterm and final grade entry
- student records
- advising software

Technology

Desktop computers, desk phones, and other devices may be issued to you from your department. Your college's technology coordinator or Information Technology Services (ITS) will provide support with set-up and maintenance.

All students and faculty have access to Microsoft Office 365, including installation of up to five licenses on devices. For more information, call 936.468.HELP.