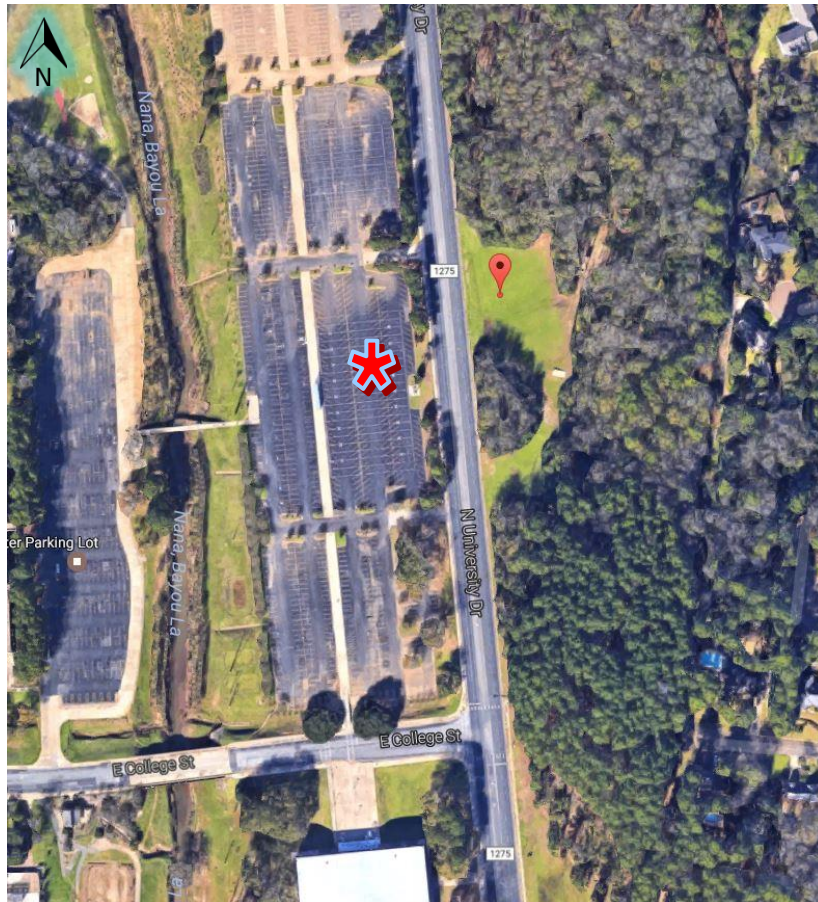




Where is the SFA Challenge Course?

GPS Coordinates: 31.625609, -94.640045 ([Google Maps Link](#))



If Driving: Please park in the Commuter Parking Lot directly across the Challenge Course and our staff will meet you there.

If you are walking from on-campus, you can cross safely at the intersection of East College and University Dr. and walk north on the grass on University Drive to reach the course.