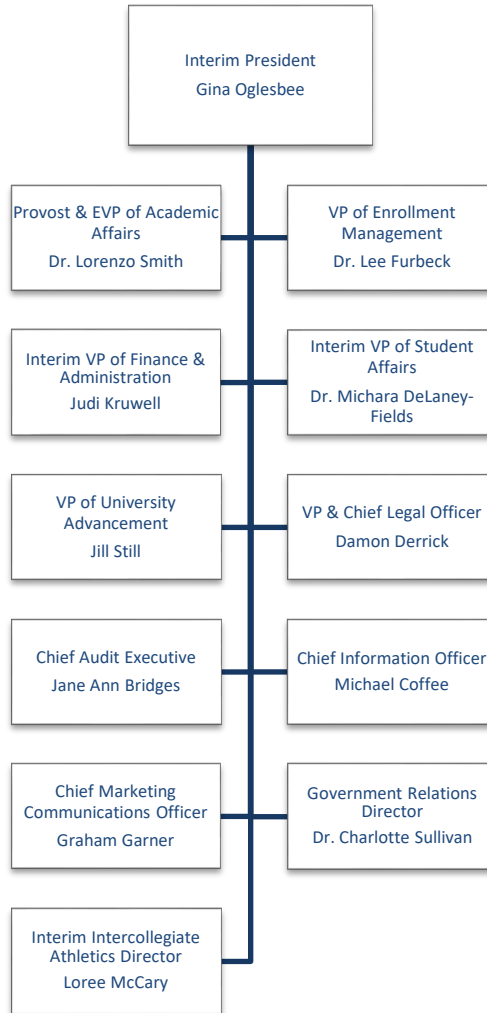
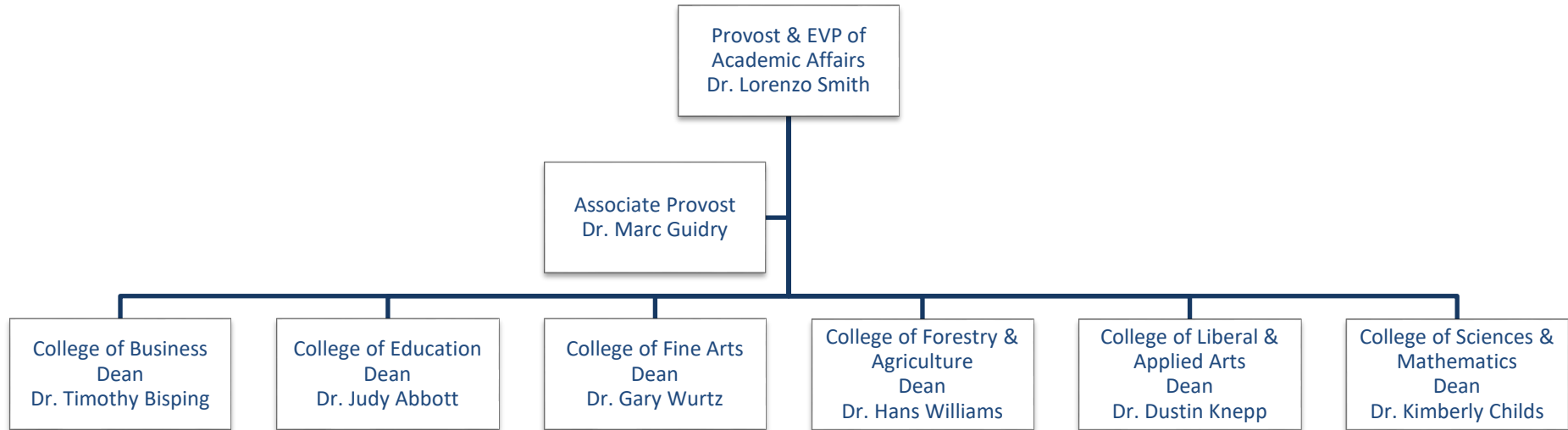


# Stephen F. Austin State University



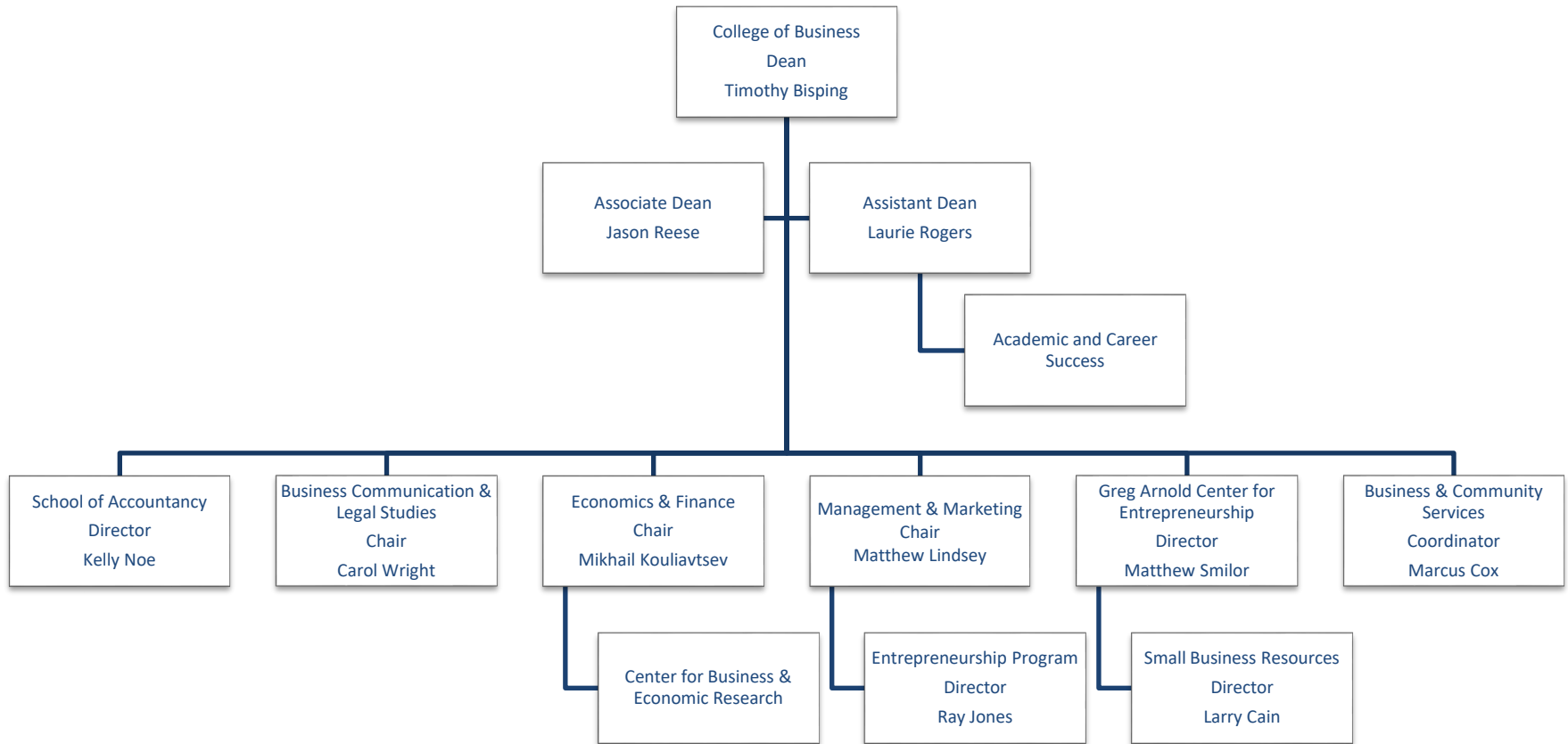
# Stephen F. Austin State University

## Division of Academic Affairs



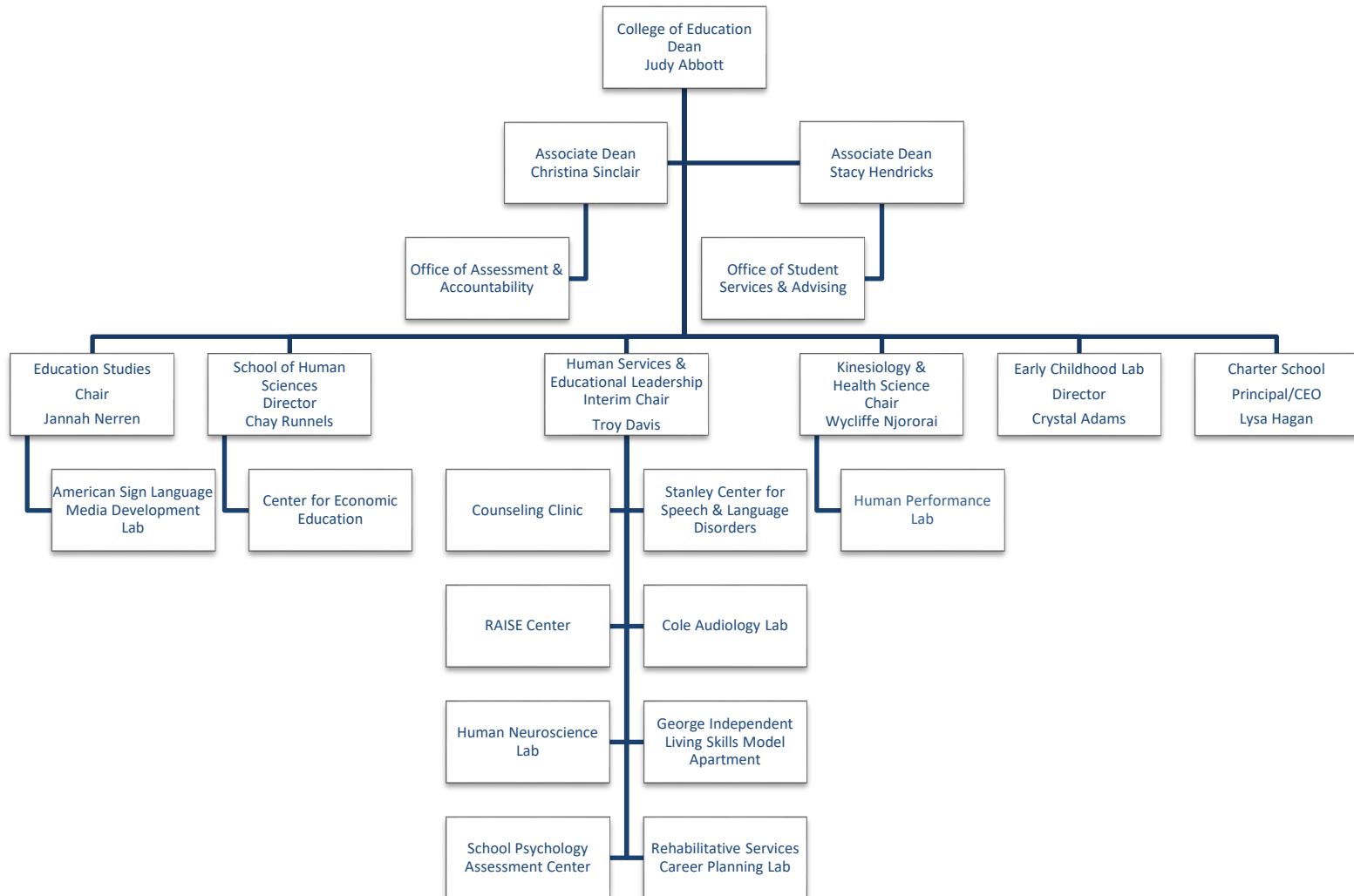
# Stephen F. Austin State University

## College of Business



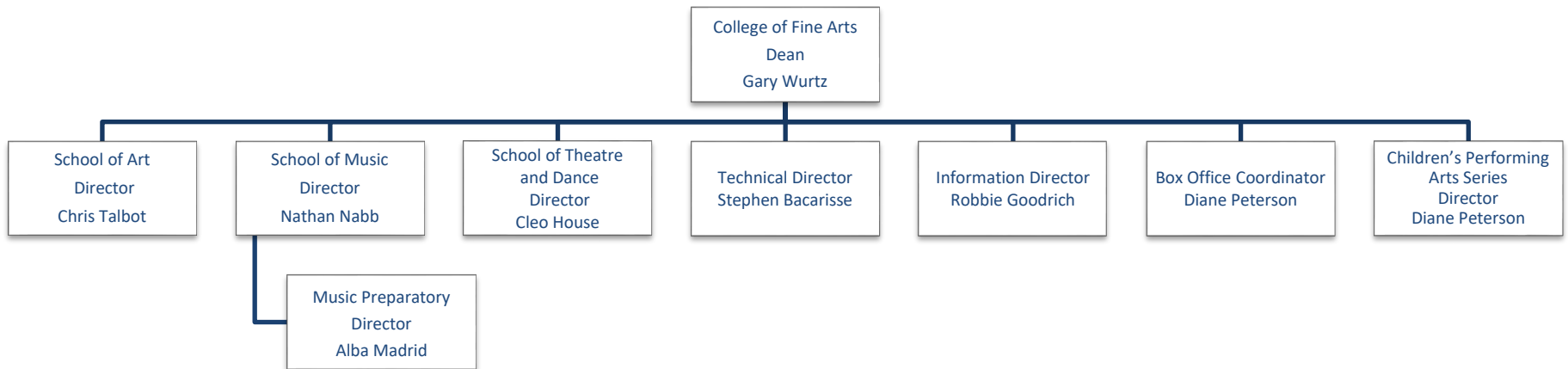
# Stephen F. Austin State University

## College of Education



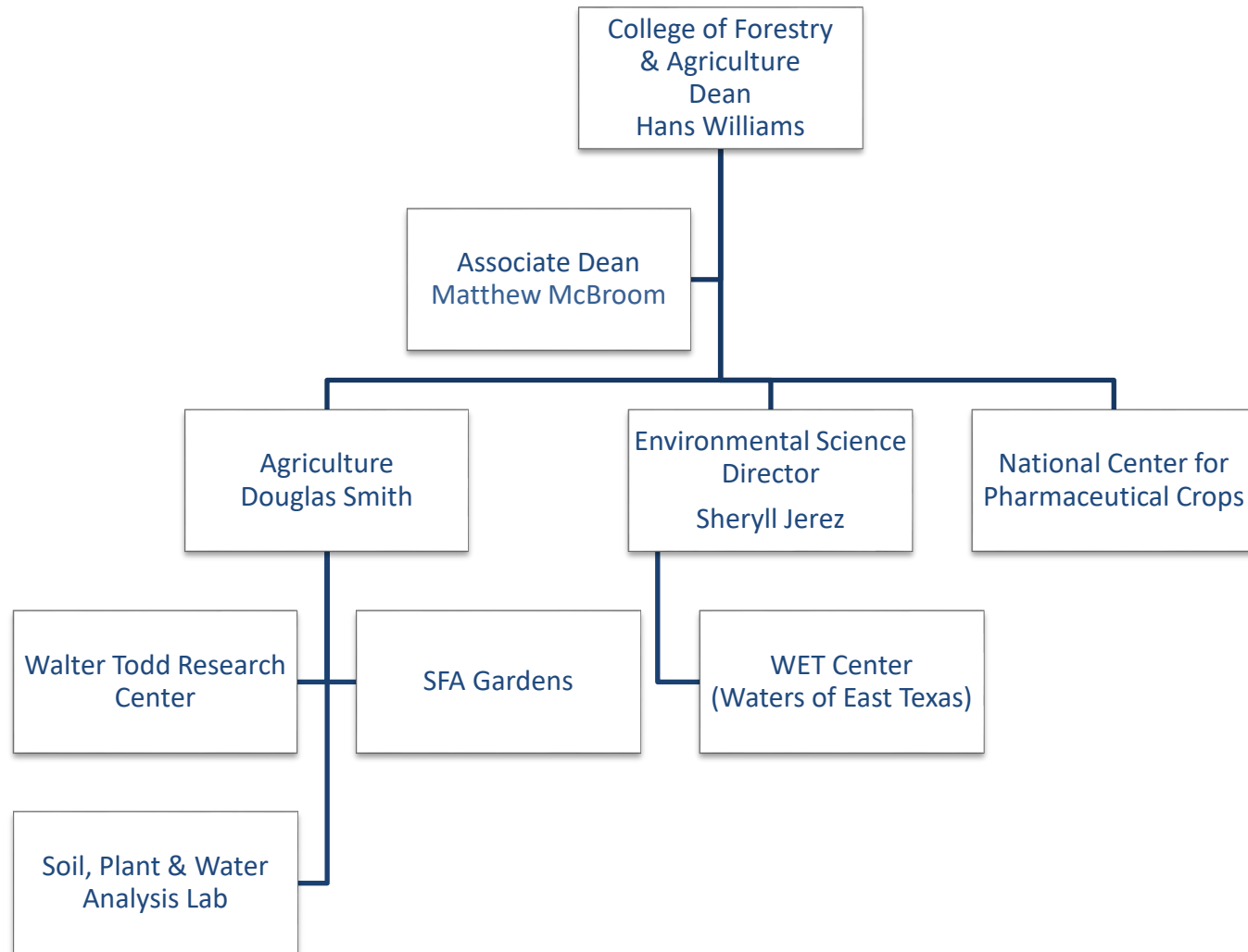
# Stephen F. Austin State University

## College of Fine Arts



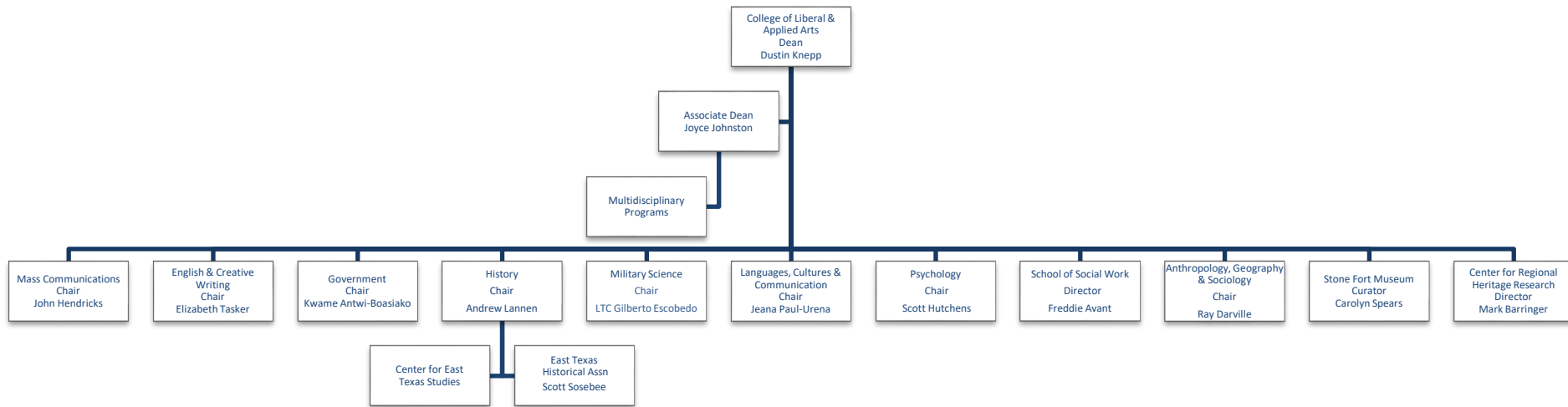
# Stephen F. Austin State University

## College of Forestry & Agriculture



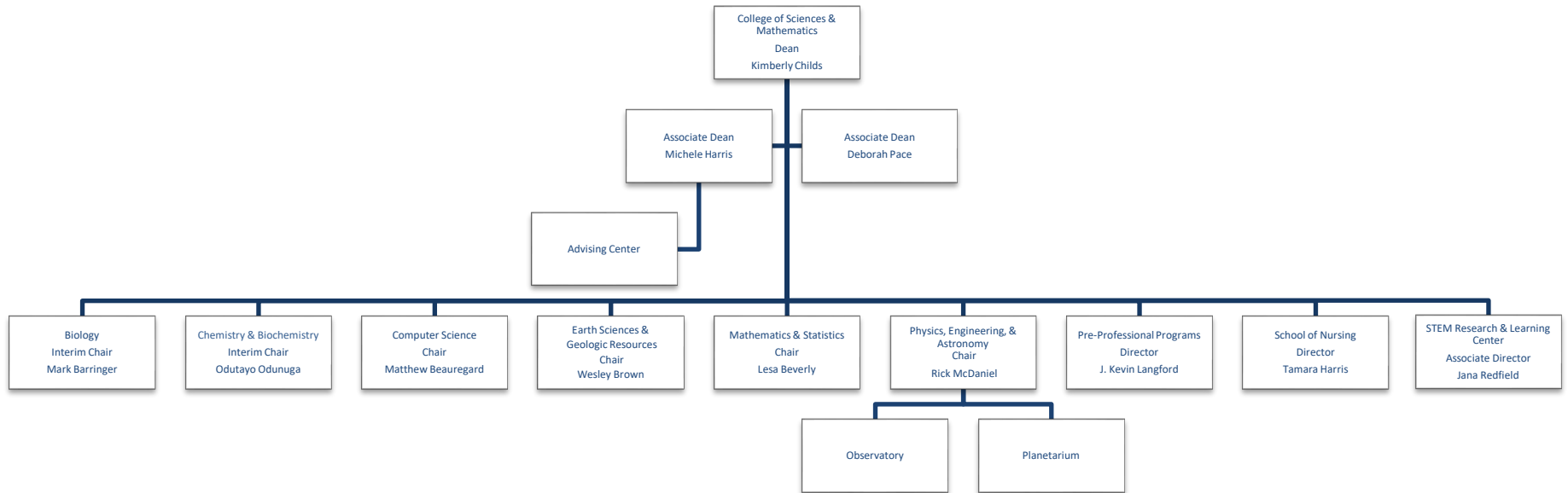
# Stephen F. Austin State University

## College of Liberal & Applied Arts



# Stephen F. Austin State University

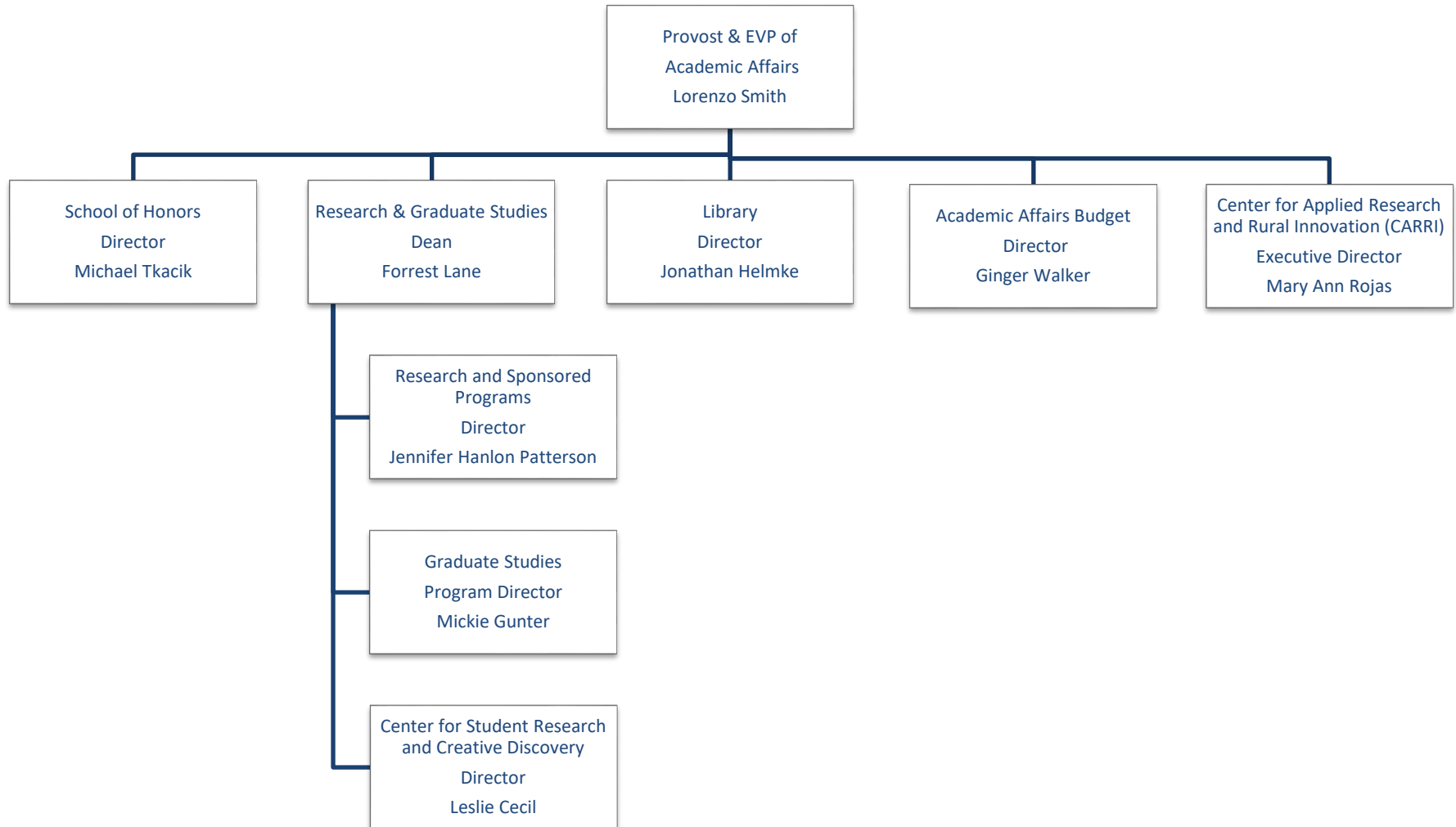
## College of Sciences & Mathematics





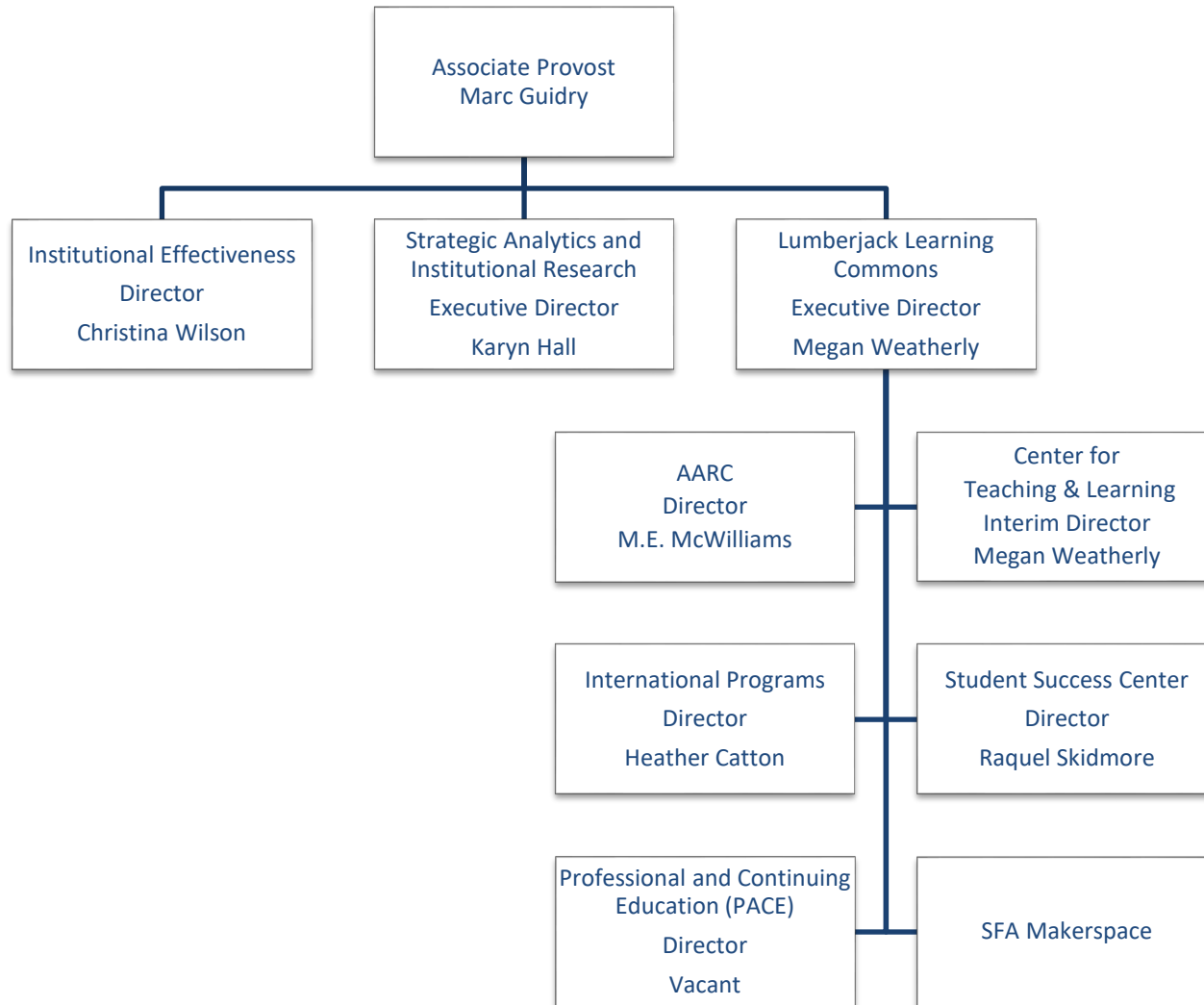
# Stephen F. Austin State University

## Academic Affairs Departments



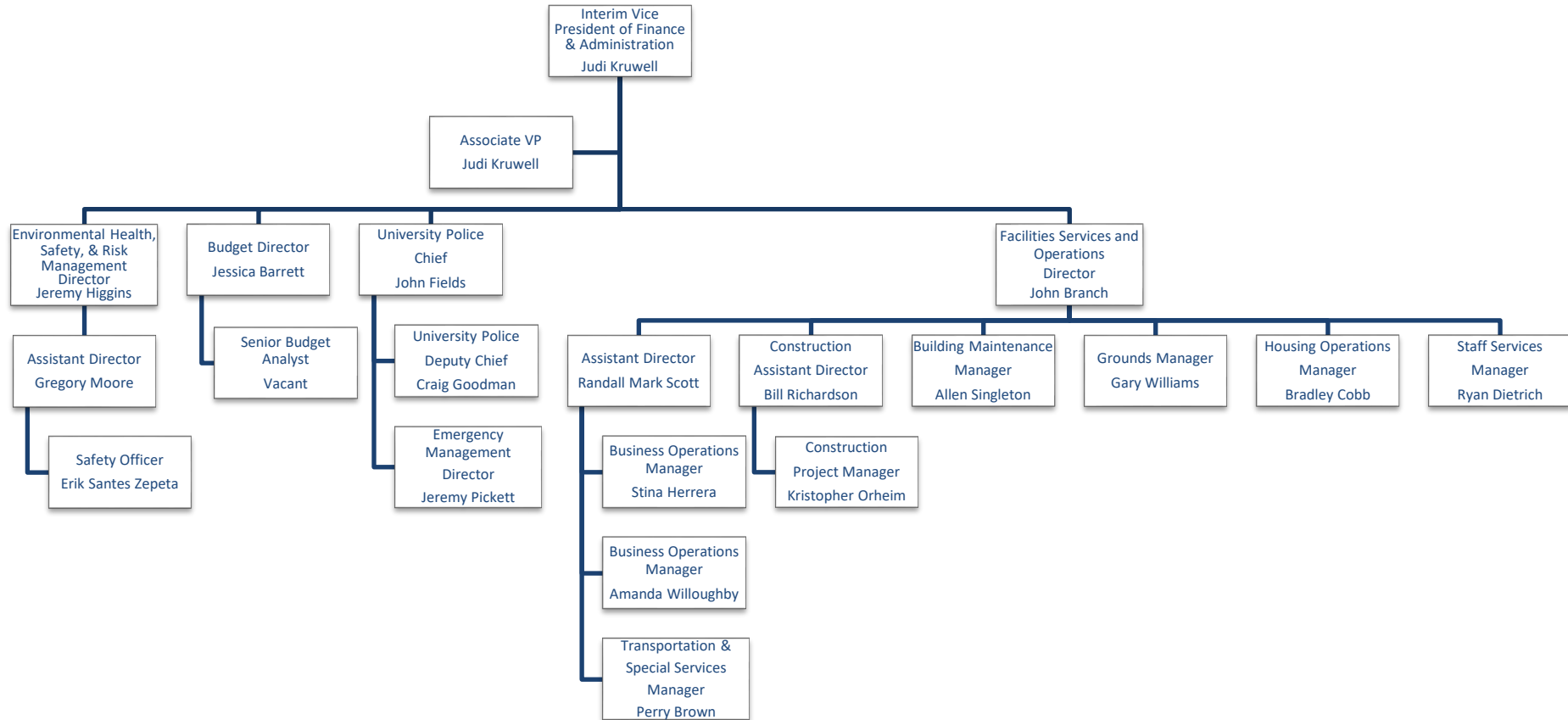
# Stephen F. Austin State University

## Academic Affairs Departments (Con't)



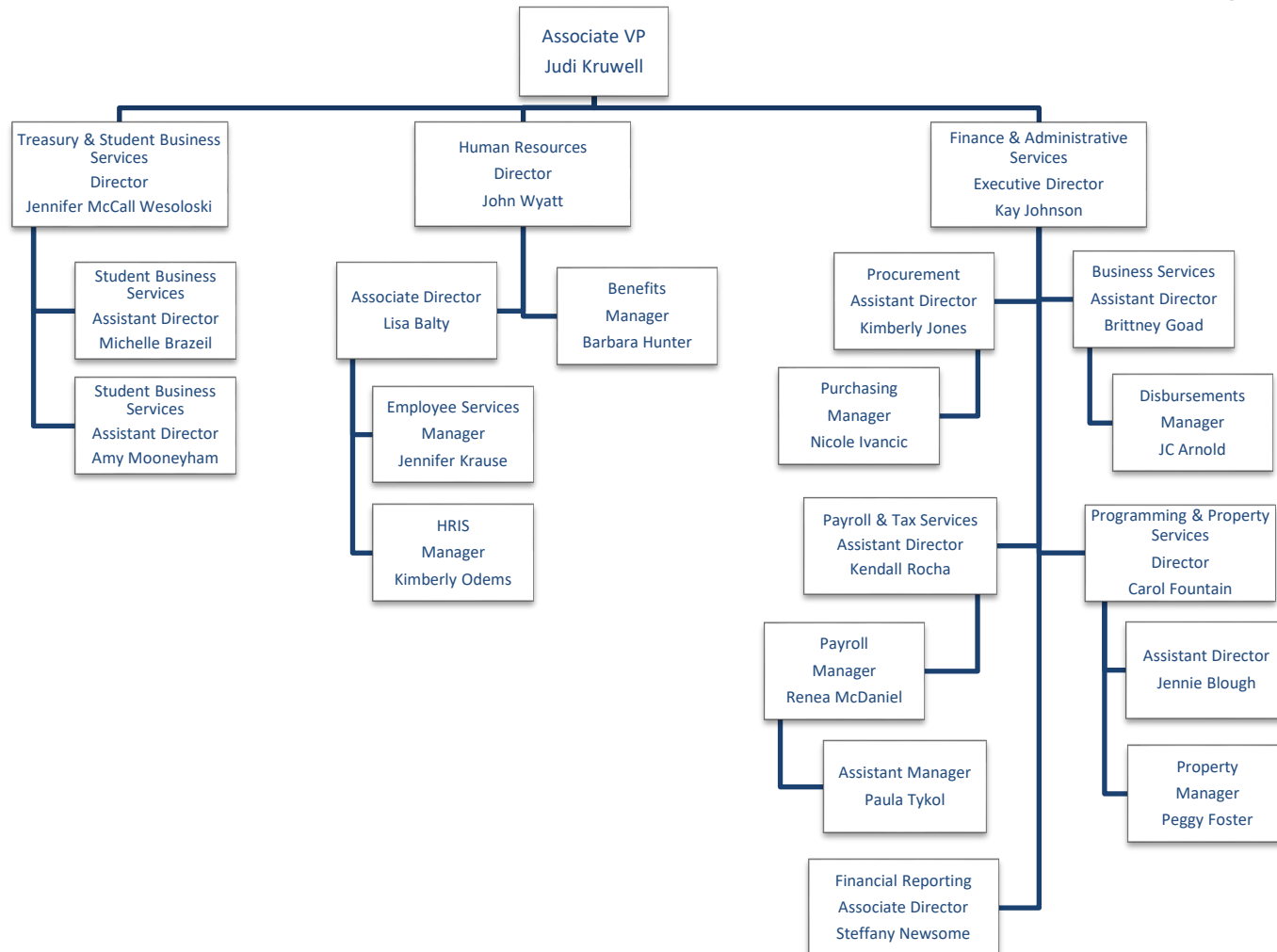
# Stephen F. Austin State University

## Division of Finance & Administration



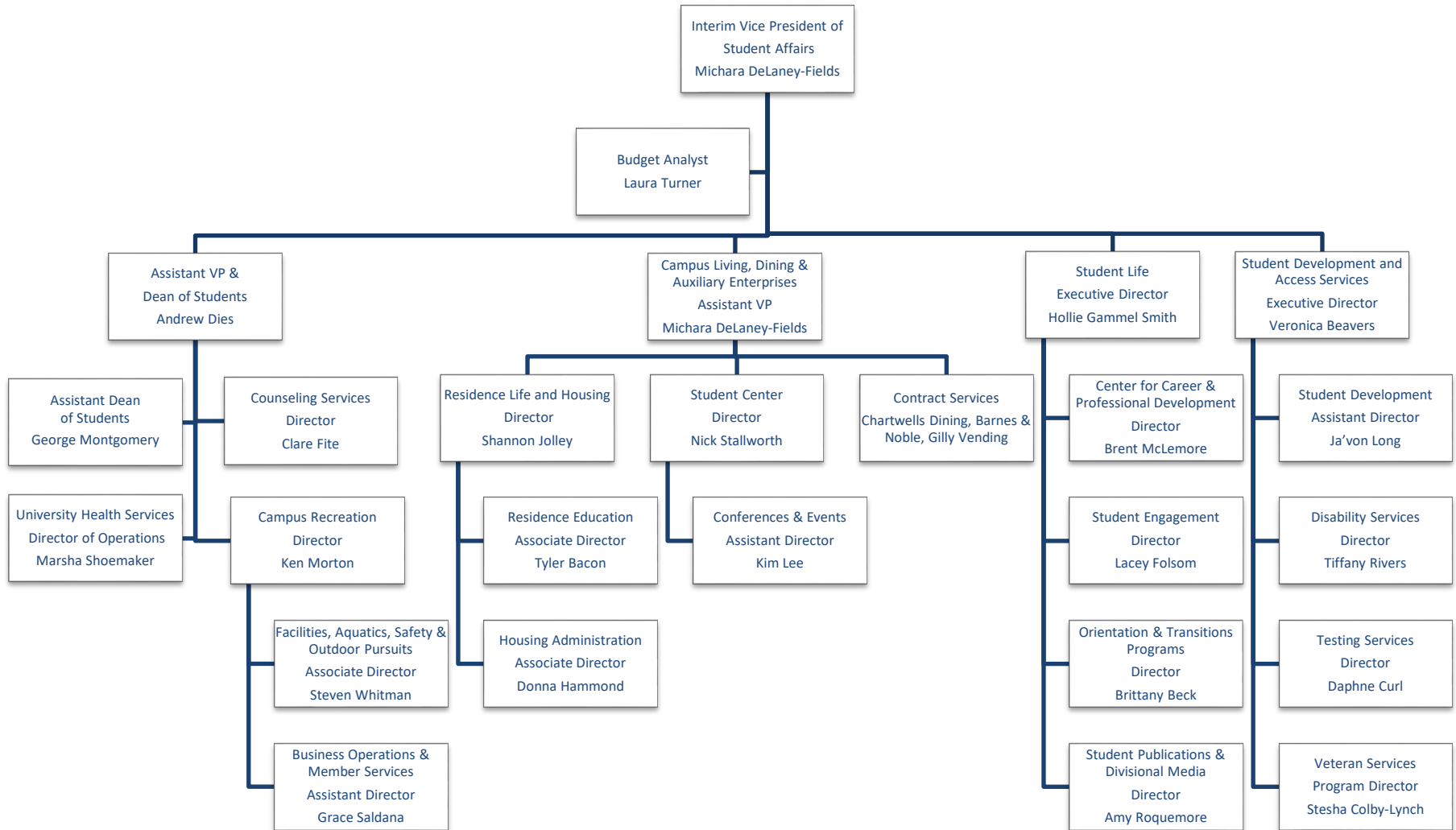
# Stephen F. Austin State University

## Division of Finance & Administration (Con't)



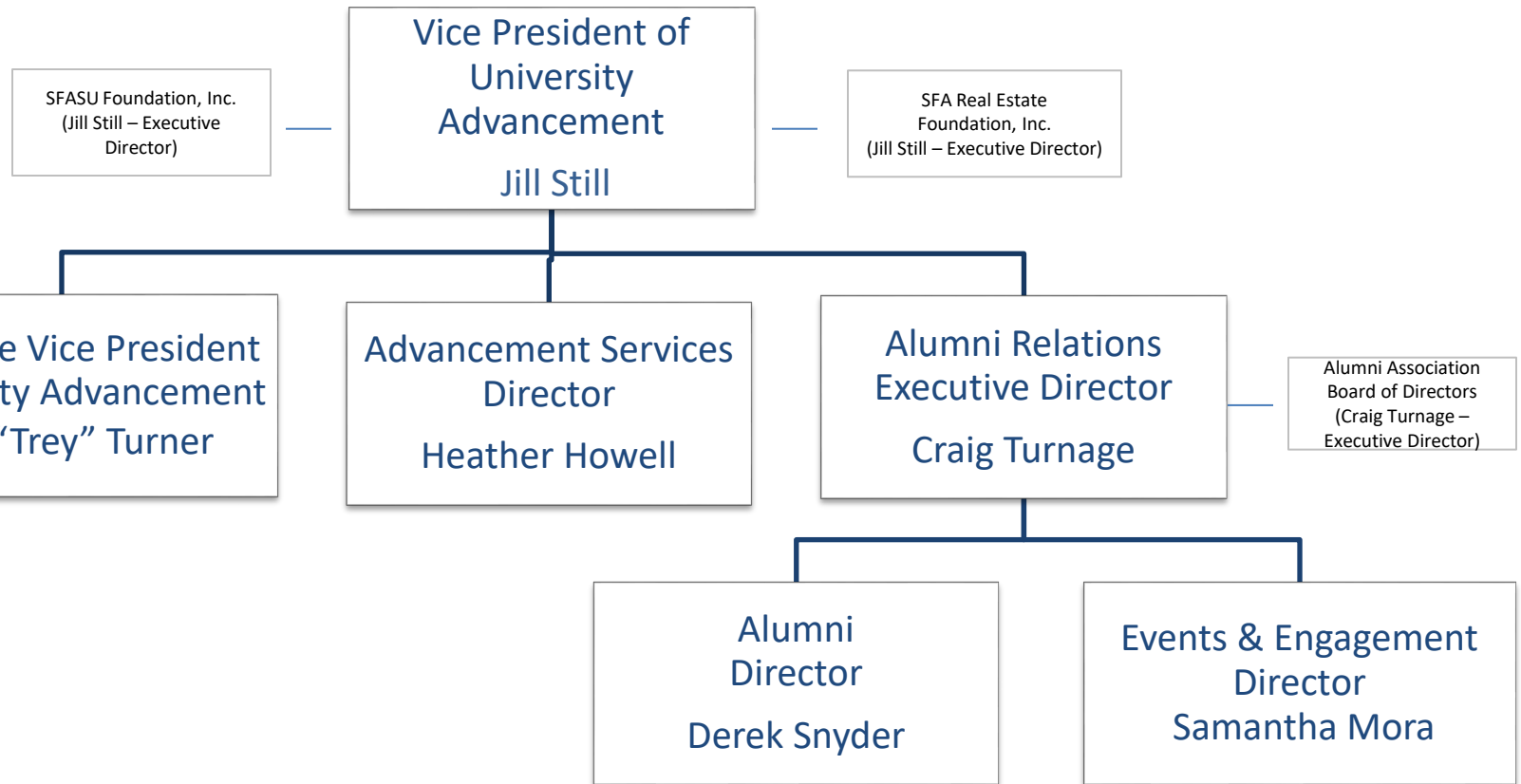
# Stephen F. Austin State University

## Division of Student Affairs



# Stephen F. Austin State University

## Division of University Advancement



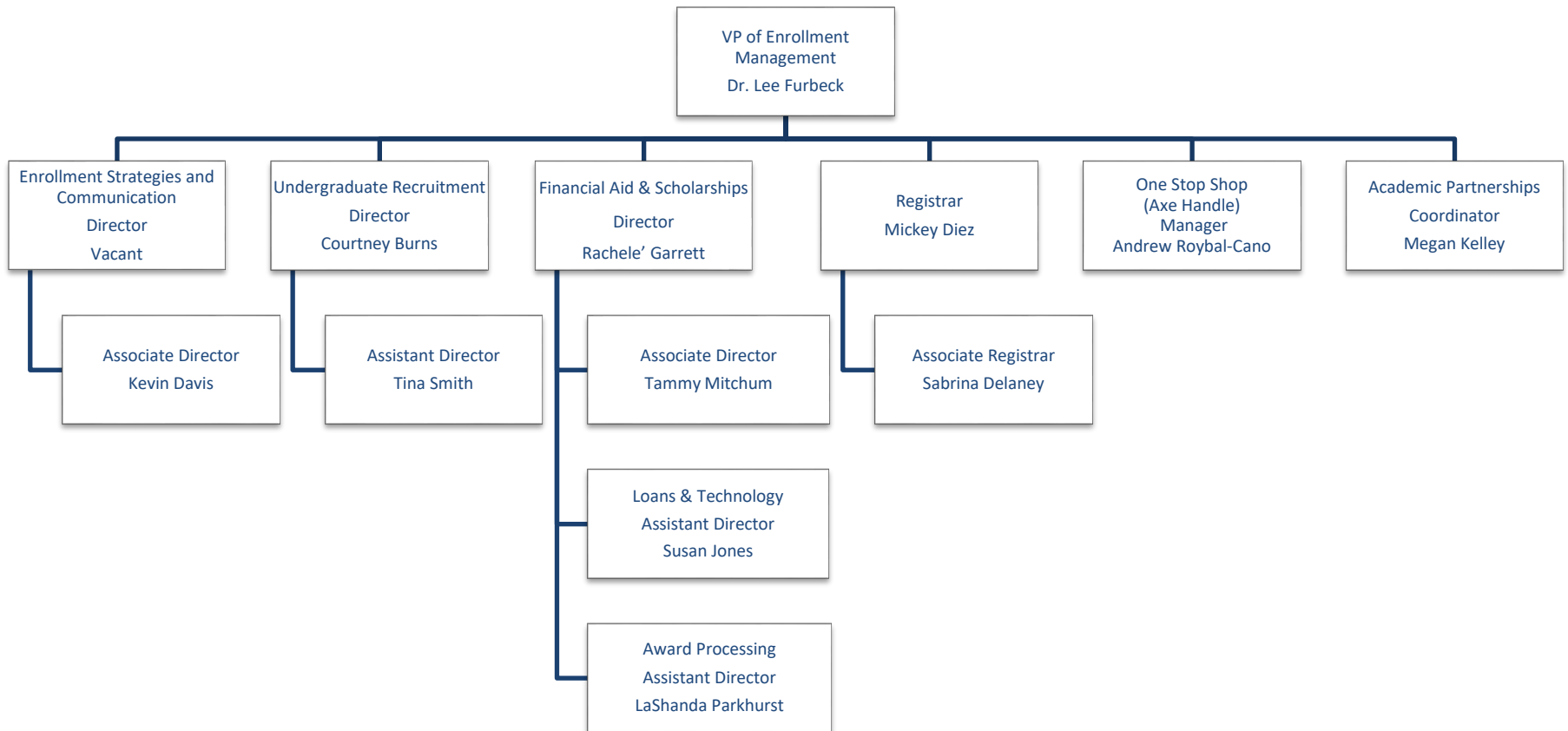
# Stephen F. Austin State University

## Division of University Marketing Communications



# Stephen F. Austin State University

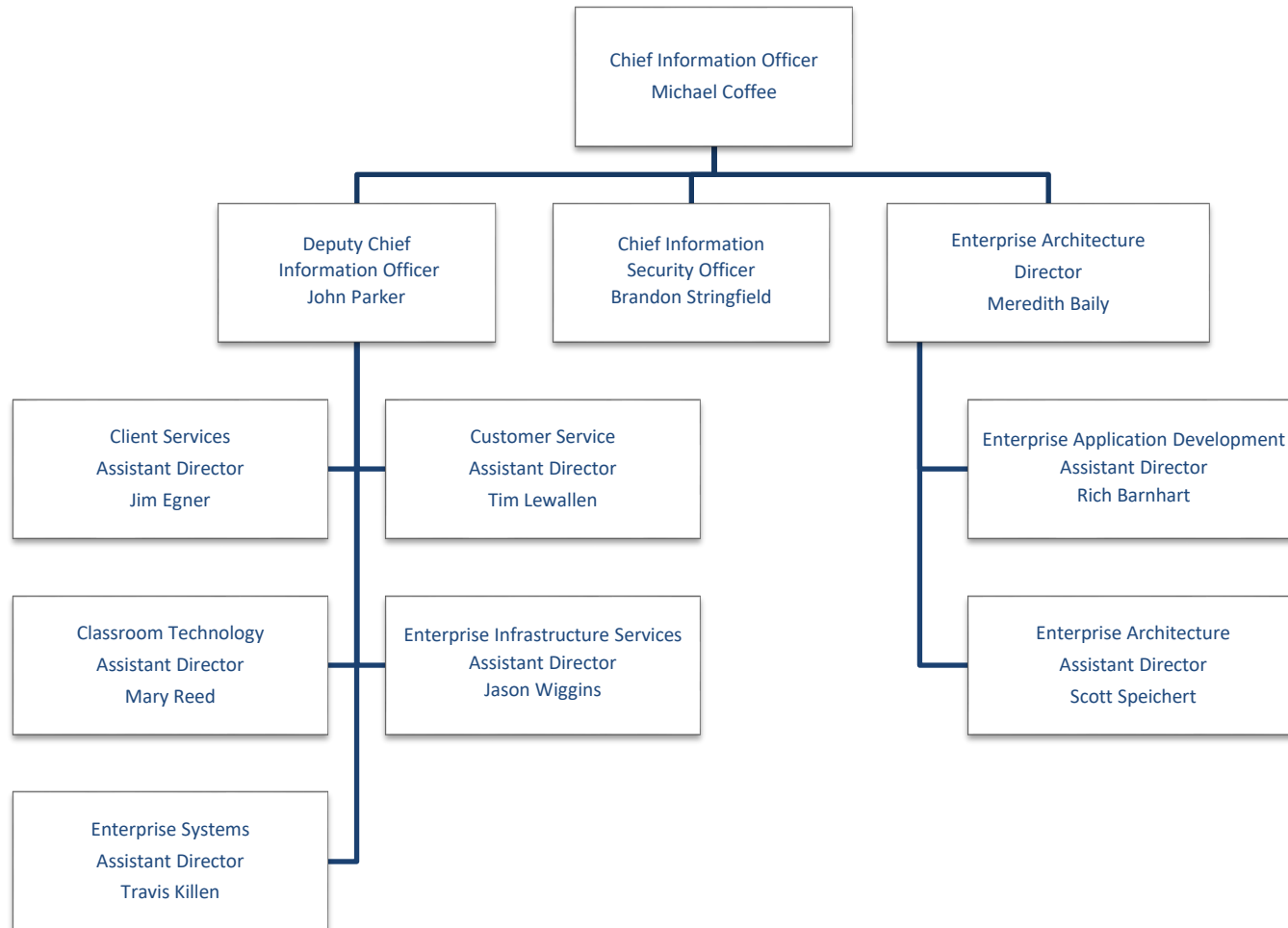
## Enrollment Management





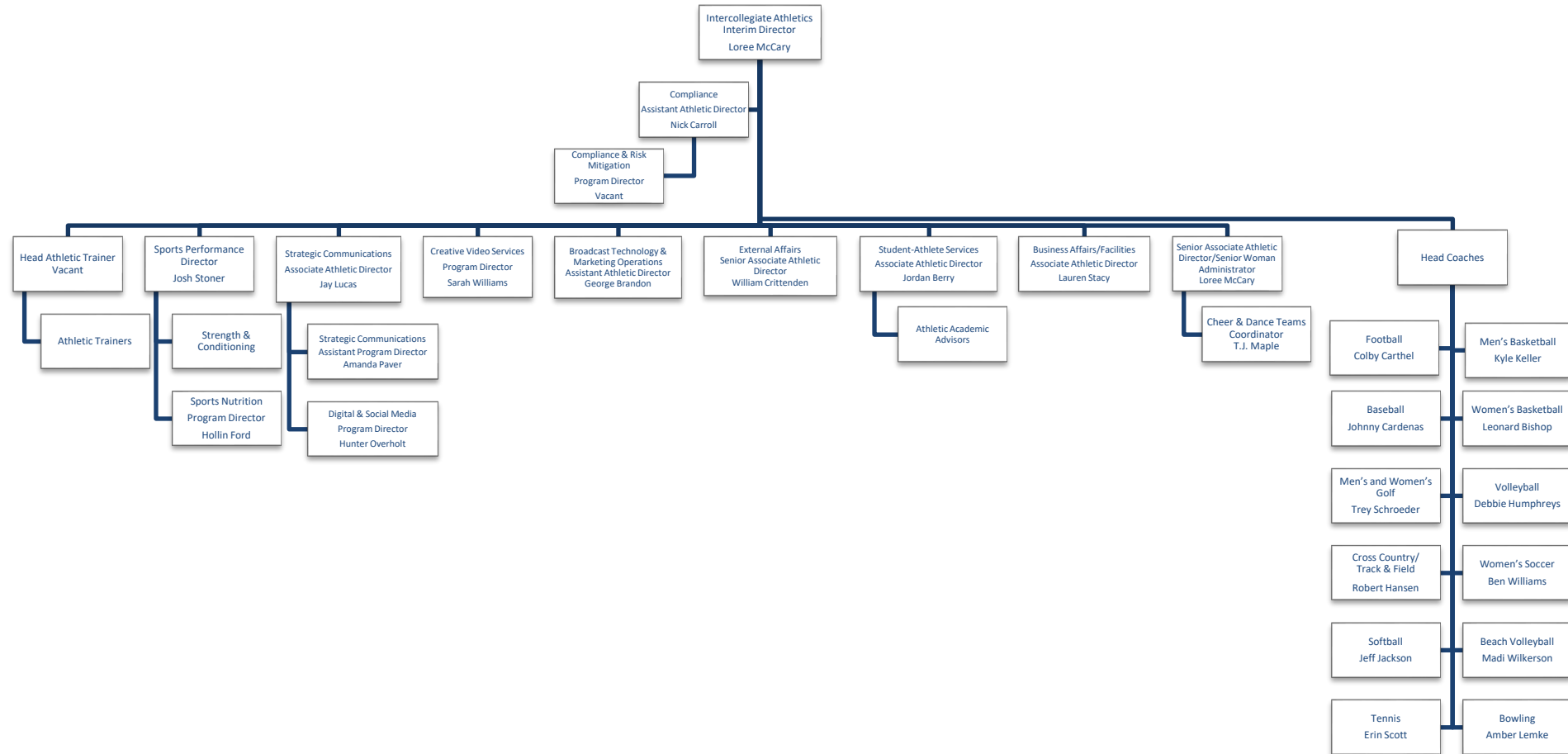
# Stephen F. Austin State University

## Information Technology Services



# Stephen F. Austin State University

## Intercollegiate Athletics



# Stephen F. Austin State University

## Title IX

Campus Living, Dining &  
Auxiliary Enterprises  
Assistant VP  
Michara DeLaney-Fields

Title IX  
Director (Coordinator)  
Lissy Turner

# Stephen F. Austin State University Charter School

