

# SFA Summer Band Camps

## 2025 High School Band Camp Reminders

June 8–13, 2025



**STEPHEN F. AUSTIN  
STATE UNIVERSITY**  
THE UNIVERSITY OF TEXAS SYSTEM  
NACOGDOCHES, TEXAS

# Camp Reminders

## Resident Camper Reminders

- Packing List
- Residence Hall Reminders
- Resident Check-In

## Commuter Camper Reminders

- Commuter Check-In

## General Reminders

- Band Auditions
- Optional Private Lessons
- Electives
- Theme Days
- Concert Schedule
- Checkout Procedure

**STEPHEN F. AUSTIN STATE UNIVERSITY**

THE UNIVERSITY OF TEXAS SYSTEM ★ NACOGDOCHES, TEXAS

# Resident Camper Reminders

*Commuter Camper Reminders: Slide 8*  
*General Camp Reminders: Slide 11*

# Residence Hall Reminders


- During camp, you will stay in Steen Hall.
- Both male and female campers will stay here and will be separated by the East and West Towers.
- Steen has suite style bathrooms meaning every bathroom is shared between two rooms. Please plan accordingly.
- Visit the [ResLife page](#) on the SFASU website to learn more about Steen Hall.
- Steen Hall: 609 E. College St., Nacogdoches, TX 75965



# Packing List

- Label all personal belongings
  - SFA is not responsible for lost or stolen items
- Instrument supplies (mallets, reeds, valve oil, etc.)
  - Percussionists, bring your own sticks, mallets and practice pad; do not need to bring instruments
- Modest, casual, hot-weather clothes; bring a school shirt to show your school spirit!
- A light jacket; the buildings can get cool during rehearsals
- Hat and sunscreen
- Comfortable shoes - you will walk A LOT
- Twin XL-size bed sheets, pillow with case, blankets
- Bathroom supplies - the dorms have suite style bathrooms
  - Toiletries, towels, shower shoes, hygiene products, etc.
- Swimsuit with swim towel
- Notebook paper and pencil for classes
- Umbrella, rain poncho, rain boots, etc. - Prepare for rain!
- Optional snacks and beverages - your dorm will have a fridge
- Extra money for snacks, water, SFA gear, etc.

## Band Camp Packing List

- Deodorant
  - Shower Shoes
  - Instrument and audition music
  - Comfortable Shoes
  - Umbrella
  - Jacket
  - Notebook and Pencil
  - Theme Day accessories
- 

**STEPHEN F. AUSTIN STATE UNIVERSITY**

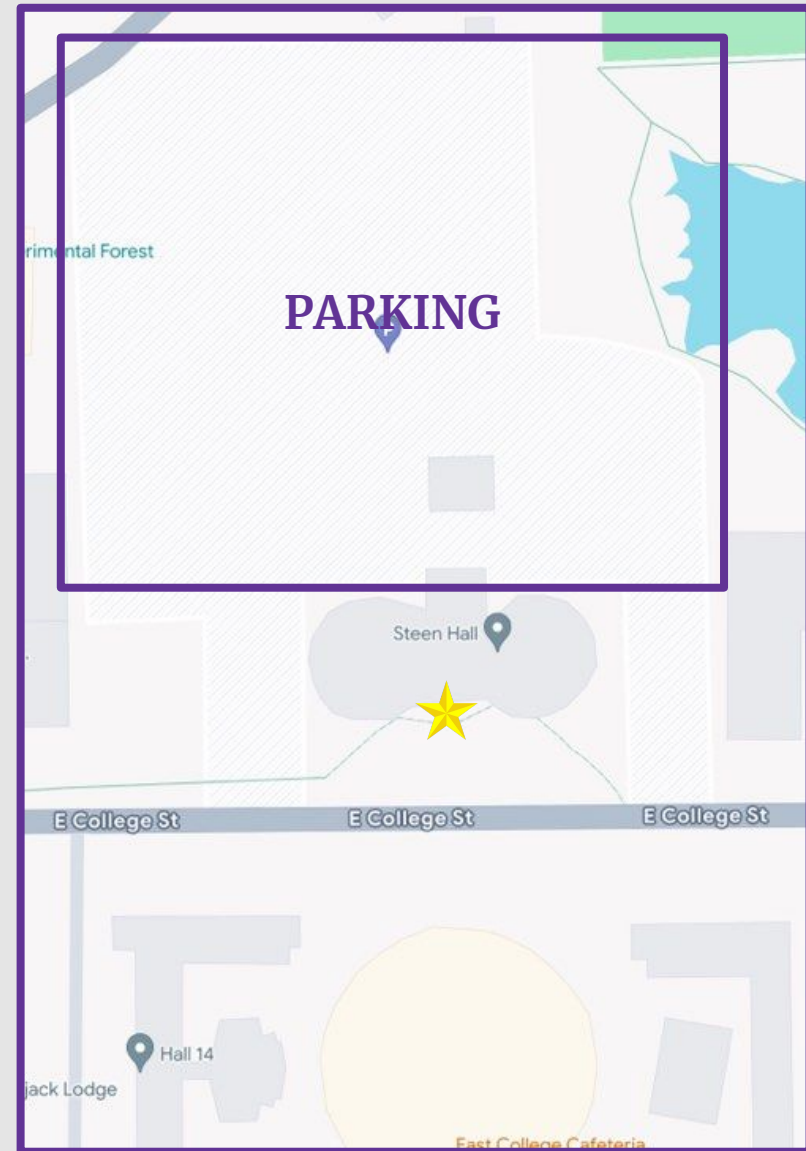
THE UNIVERSITY OF TEXAS SYSTEM ★ NACOGDOCHES, TEXAS



# Dorm Check-In: Noon - 3 PM

1. When you arrive at Steen Hall, park in the areas outlined in purple on the map.
2. Follow the sidewalks and arrows to the check-in entrance (see star).
3. To enter Steen Hall, campers present either a Dorm Fast Pass or a Registration Ticket from the Band Office.
  - Fast Passes are sent to the email provided on your student's registration form once the registration is complete.
    - We will begin sending out Fast Passes the week on June 2
  - If the camper's registration is not complete, they must go to the Cole Concert Hall lobby to finalize your student's registration.
    - After your full payment and waivers are complete, you will be presented a Registration Ticket to show at check-in.

For questions about your student's registration prior to check-in, please email [bandoffice@sfasu.edu](mailto:bandoffice@sfasu.edu).



## STEPHEN F. AUSTIN STATE UNIVERSITY

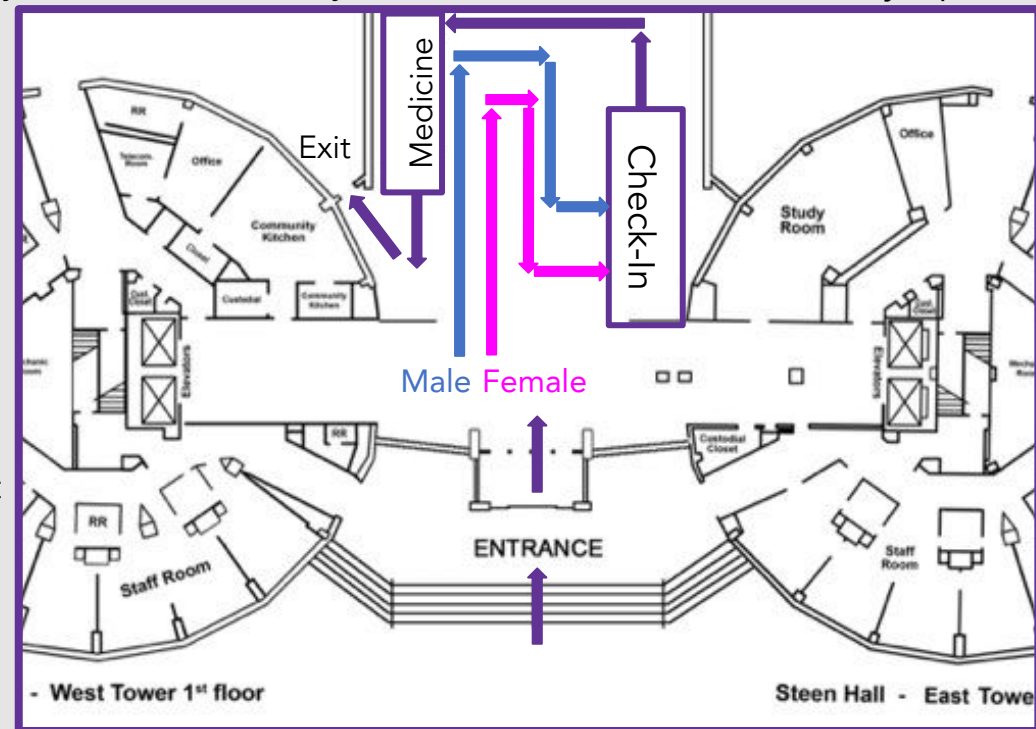
THE UNIVERSITY OF TEXAS SYSTEM ★ NACOGDOCHES, TEXAS

# Dorm Check-In: Noon - 3 PM

- Once you enter Steen Hall, please follow the flow of traffic.
  - Please retrieve your luggage from your vehicle after you have checked in.
  - At check-in, you will receive your dorm key and access/meal card.
- After you have checked in, re-enter through the main entrance and proceed to the student's room. Even numbered rooms are in East Tower and odd numbered rooms are in the West Tower.
- Once you arrive to your room, your camp T-shirt, name tag and handbook will be placed on your bed.
- After you PLACE your luggage, please head to your audition site for your audition. You MUST audition by 4 p.m.

There will be a medication table at check-in. Please follow the steps below to drop off your student's medication.

- Medication must be placed in a bag or container.
- You must include a notecard with your student's name, medication instructions and daily dosage.
- Head counselors will provide the medication at the appropriate times for the camper to self-medicate.
- Students will be able to receive over-the-counter medication during camp at the counselor's discretion.



## STEPHEN F. AUSTIN STATE UNIVERSITY

THE UNIVERSITY OF TEXAS SYSTEM ★ NACOGDOCHES, TEXAS

# Commuter Camper Reminders

*General Camp Reminders: Slide 11*

**STEPHEN F. AUSTIN STATE UNIVERSITY**

THE UNIVERSITY OF TEXAS SYSTEM ★ NACOGDOCHES, TEXAS



# Commuter Check-In: Noon–3:00 PM

- Check-in is from 12:00–3:00 p.m. in the lobby of the Wright Music Building.
- Please look for the “Commuter Check-In” sign. DO NOT enter the registration line in the Cole Concert Hall lobby. There will be signs and counselors to point you in the correct direction.
- At check-in, you will receive your camp T-shirt, name tag, lunch meal card and handbook.
- As soon as you check in, please locate your audition room. You must audition by 4:00 p.m.
- Commuters may go off-campus for dinner or eat in the dining hall with the resident campers.
  - All lunch meals and Sunday night dinner are included in the commuter meal plan.
  - If commuters plan to eat dinner off-campus on Sunday, please ensure they are back in the Wright Music Building no later than 6:45 p.m.
  - If your commuter student plans to eat dinner in the dining hall Monday-Thursday, bring at least \$13 to purchase dinner.
- Follow the schedule provided in your handbook for the remainder of camp.



**STEPHEN F. AUSTIN STATE UNIVERSITY**

THE UNIVERSITY OF TEXAS SYSTEM ★ NACOGDOCHES, TEXAS

# Commuter Check-In: Noon–3:00 PM

- Auditions will be in the Wright Music Building at 2210 Alumni Drive and the Griffith Fine Arts Building at 2222 Alumni Drive
- Band auditions are used to place your student in the ensemble in which they will be most successful.
- There will be counselors and maps to help you locate your audition room.
- You must audition by 4:00 p.m. This is a strict deadline so we can ensure that band rosters are determined before the first rehearsal later in the evening.
- If your student is interested in Jazz Band, please note that this is an additional elective that requires a separate audition.
  - Jazz Band rehearsals will take place during the student's free time.
  - Students may audition on a prepared piece or with their concert band audition music.
  - You must audition for a concert band before auditioning for the Jazz Band.
  - Jazz Band auditions will be from 3 to 5 p.m. on Sunday, June 9.



# General Camp Reminders

**STEPHEN F. AUSTIN STATE UNIVERSITY**

THE UNIVERSITY OF TEXAS SYSTEM ★ NACOGDOCHES, TEXAS

# Optional Private Lessons

- Private lessons with SFA applied faculty and staff are available throughout camp. Private lessons will occur during the student's free time.
- There will be a private lesson enrollment table in the Wright Music Building Lobby and in the Steen Hall Lobby from 1 to 4 p.m.
- Lessons are \$30 per half hour and are sponsored by Tau Beta Sigma. You can pay with exact cash, check or a credit/debit card. Please note that a small processing fee will be applied for card transactions.
- Students are responsible for communicating with counselors about their assigned lesson times.
- Students are responsible for keeping track of their lesson times. No refunds will be given if a lesson is missed.



**STEPHEN F. AUSTIN STATE UNIVERSITY**

THE UNIVERSITY OF TEXAS SYSTEM ★ NACOGDOCHES, TEXAS



# Theme Days

- Theme days are NOT required, but we highly encourage students to participate. Many of our faculty, staff and counselors participate in them as well!
- All theme day must align with the SFA Code of Conduct. Failure to do so will result in loss of theme days for all campers. Please ensure that you wear the appropriate footwear and warm weather clothing for camp as well.
- Monday: Meow, Meow, Monday - Wear your best cat-themed items. This could be cat ears, a cat shirt or other cat-themed apparel!
- Tuesday: Team-Up Tuesday - Wear jerseys, T-shirts, baseball caps and other gear to represent your favorite sports team!
- Wednesday: Adam Sandler Wednesday - Wear basketball shorts, baggy clothes, backward baseball cap, Hawaiian print polo or other comfortable clothing!
- Thursday: Superhero Day - Wear your favorite superhero hat, shirt or other superhero apparel. Bonus points if you have a cape!
- Friday: Concert Best - You are not required to wear your concert attire all day, but please make sure you have your concert clothes ready to wear for your performance!

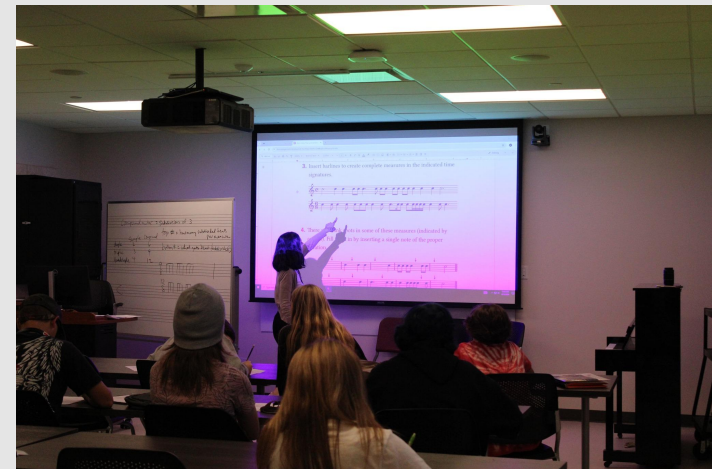


**STEPHEN F. AUSTIN STATE UNIVERSITY**

THE UNIVERSITY OF TEXAS SYSTEM ★ NACOGDOCHES, TEXAS

# Camp Electives

- For the duration of band camp, each camper will participate in an elective. Our elective options include Conducting, Music Technology, Music Theory and Chamber Ensembles.
- In the Conducting, elective students will learn conducting technique as well as focus on leadership, communication and interpretation of musical works.
- In the Music Technology elective, students will cover tools and software for music production, recording, and editing. This includes topics like sound design, digital audio workstations (DAWs) and MIDI.
- In the Music Theory elective, students will focus on the fundamentals of music, including harmony, melody, rhythm and form. This class explores notation, chord structures and scales.
- Chamber ensembles are small instrument choirs that perform together. This elective emphasizes individual responsibility, refined listening and teamwork. Examples include flute choir, steel band and trombone choir. (Only available for grades 10-12.)
- Jazz Band is another elective option that requires a second audition and takes place during the students free time.
- You can indicate your elective preference on the registration form. If you do not select an elective, our office will assign one.





# Concert Schedule and Checkout Procedure

## FRIDAY CONCERT SCHEDULE

- The band concert schedule will be released no later than the first day of camp on social media.
- At this time, concert times are scheduled between 10 a.m. to 3 p.m.
- Families who are unable to attend the performance can view the livestream at [sfasu.edu/music](https://sfasu.edu/music). Please be sure to follow @sfasubandcamps on Facebook and Instagram for updates.

## FRIDAY CHECKOUT PROCEDURES

- The dorm checkout schedule will be in the student's handbook and will be posted throughout the dorm and music building.
- If you are a commuter, please find your designated commuter checkout counselor. More information about this will be given at camp.
- Prior to check out, counselors will check the student's room for any damages and/or left items.
- All campers must check out by 3 p.m.



On concert day, families and other spectators may pay hourly parking at the Wesley Foundation on East College Street across from the Wright Music Building.

**STEPHEN F. AUSTIN STATE UNIVERSITY**

THE UNIVERSITY OF TEXAS SYSTEM ★ NACOGDOCHES, TEXAS



We are so excited to see your musician at SFA's High School Summer Band Camp! If you have any questions, please contact us by emailing [bandoffice@sfasu.edu](mailto:bandoffice@sfasu.edu) or calling (936) 468-4702. Thanks, and axe 'em Jacks!



**STEPHEN F. AUSTIN STATE UNIVERSITY**

THE UNIVERSITY OF TEXAS SYSTEM ★ NACOGDOCHES, TEXAS