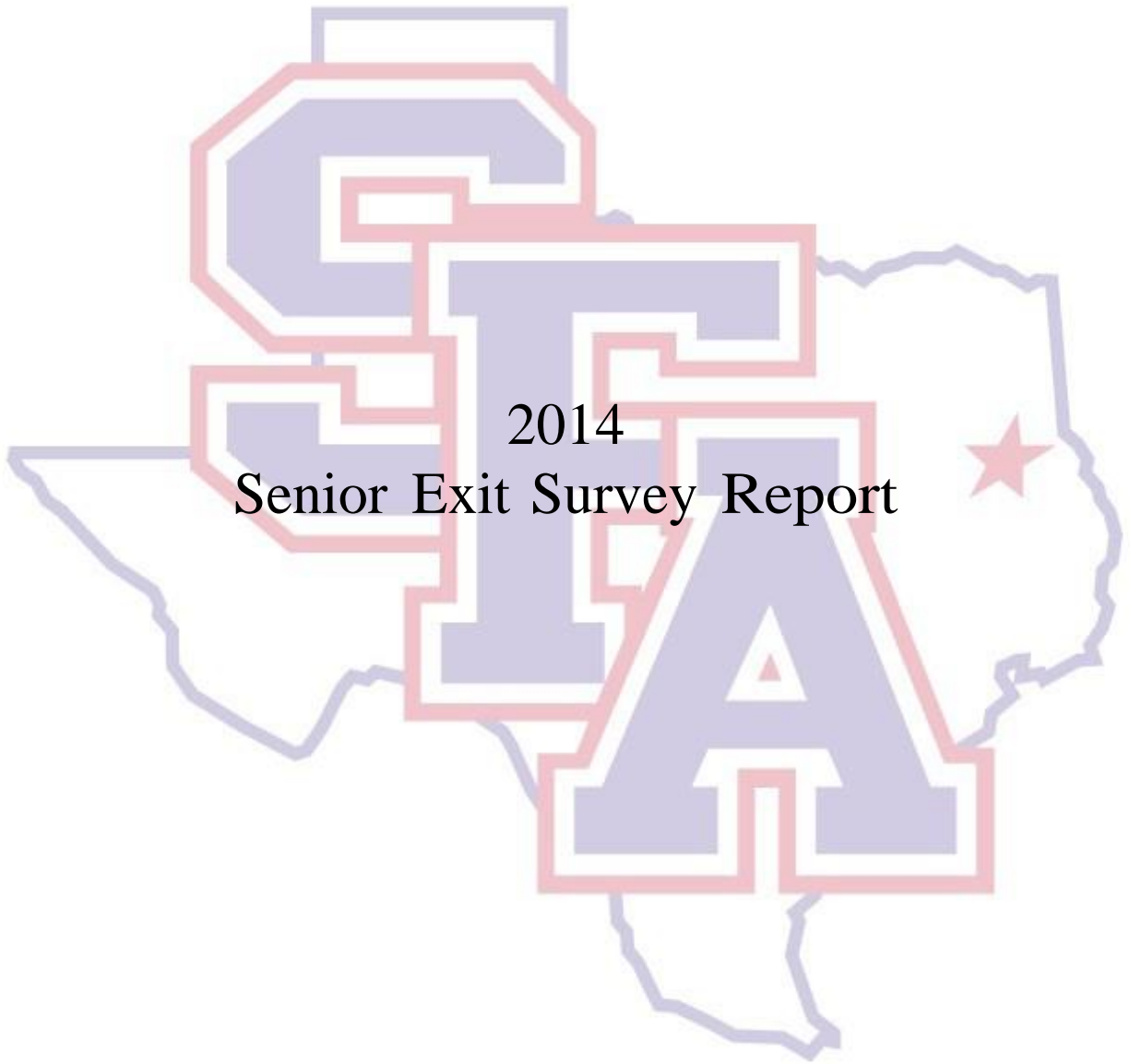


Stephen F. Austin State University



2014 Senior Exit Survey Report

Office of Student Learning and Institutional Assessment
January 2015



Stephen F. Austin State University Senior Exit Survey Report

AY 2014 (Fall 2013 – Summer 2014)

Response Rates. The Senior Exit Survey was delivered electronically to students' SFA e-mail address via Qualtrics. There were a total of 2039 undergraduate seniors in academic year of 2014. A total of 1236 senior students completed the survey. The overall response rate was 60.62% with the response rate varying by semester. In Fall 2013, there were 737 undergraduate students awarded degrees, 429 of them took the survey, response rate was 58.21%; in Spring 2014, 964 undergraduate degrees were awarded, 647 students took the survey, response rate was 67.12%; in Summer 2014, there were a total of 338 undergraduate students awarded degrees, 160 of them took the survey, the response rate was 47.34% (Figure 1).

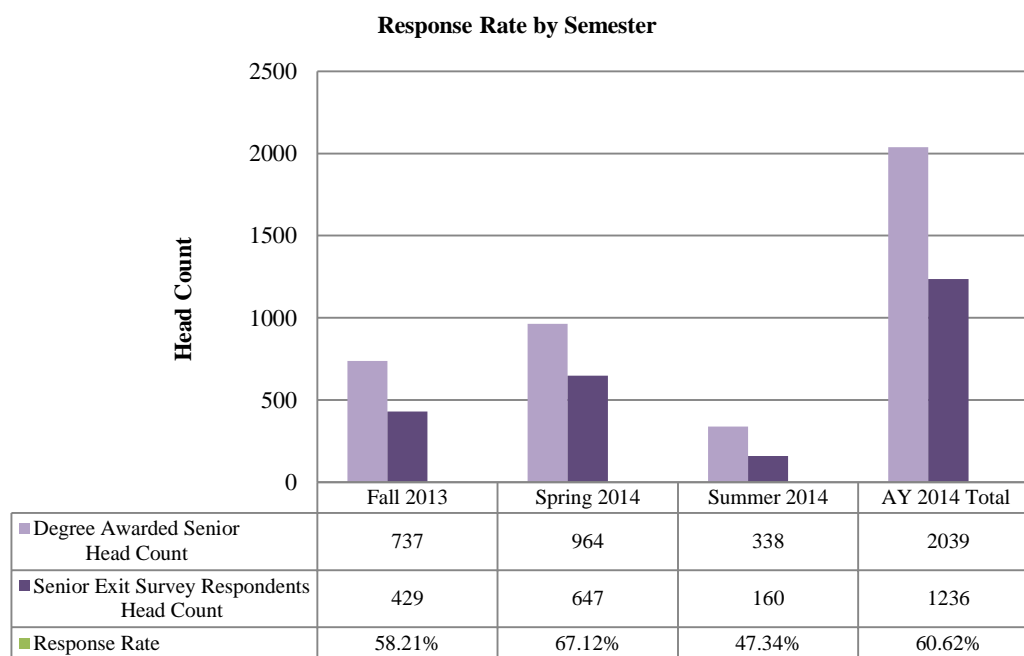


Figure 1

The response rate by colleges were: College of Liberal Arts had 455 senior graduates, 302 took the survey (66.37%); College of Education had 807 graduates, 509 took the survey (63.07%); College of Forestry, 93 senior undergraduates, 58 took the survey (62.37%); College



Stephen F. Austin State University Senior Exit Survey Report

AY 2014 (Fall 2013 – Summer 2014)

of Science & Mathematics had 249 senior graduates, 139 took the survey (55.82%); College of Business had 286 senior graduates, 155 survey respondents (54.20%); and College of Fine Arts had 149 senior graduates, 73 survey respondents (48.99%) (Figure 2).

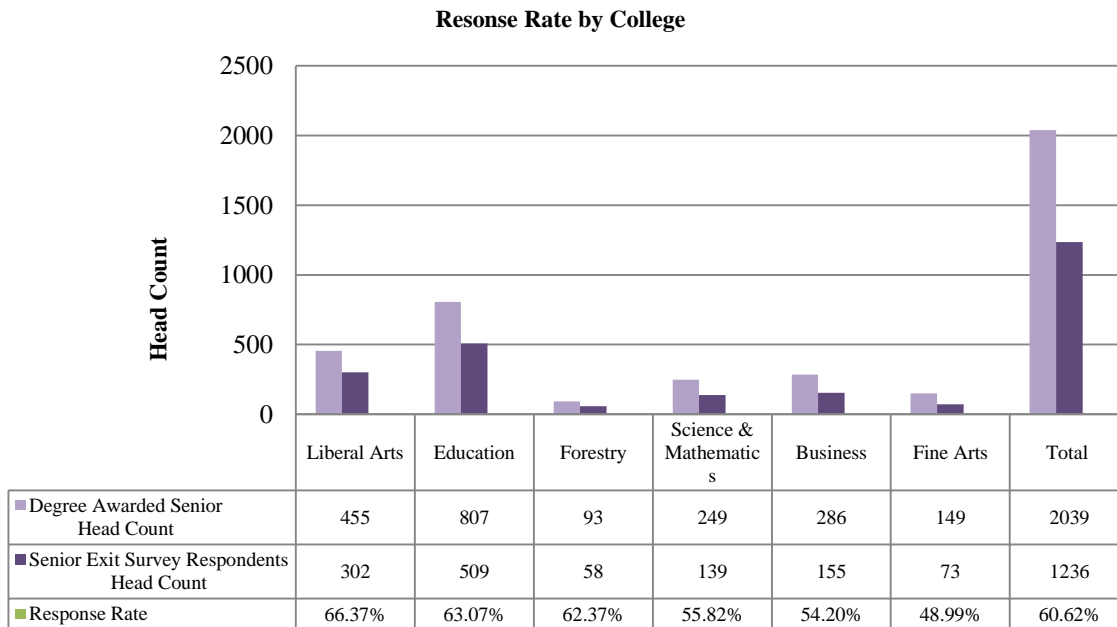


Figure 2



Stephen F. Austin State University Senior Exit Survey Report

AY 2014 (Fall 2013 – Summer 2014)

Demographics. Demographics are broken down for student identified gender and race.

A total of 360 males (29.1%) and 876 females (70.9%) took the survey (Chart 1).

Respondants by Gender

■ Female 876 ■ Male 360

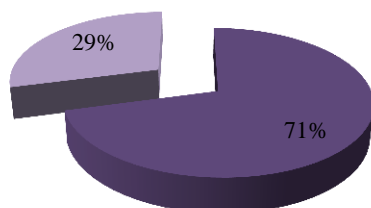


Chart 1

The breakdown of race identified by students was as follows: 791 white (64%), 240 Black or African American (19.4%), 137 Hispanic (11.10%), 10 Asian (0.81%), 5 American Indian or Alaskan Native (0.4%), 9 International (0.7%), 16 Two or More racial (1.3%), and 28 Unknown or Not Reported (2.3%) respondents (Chart 2).



Stephen F. Austin State University Senior Exit Survey Report

AY 2014 (Fall 2013 – Summer 2014)

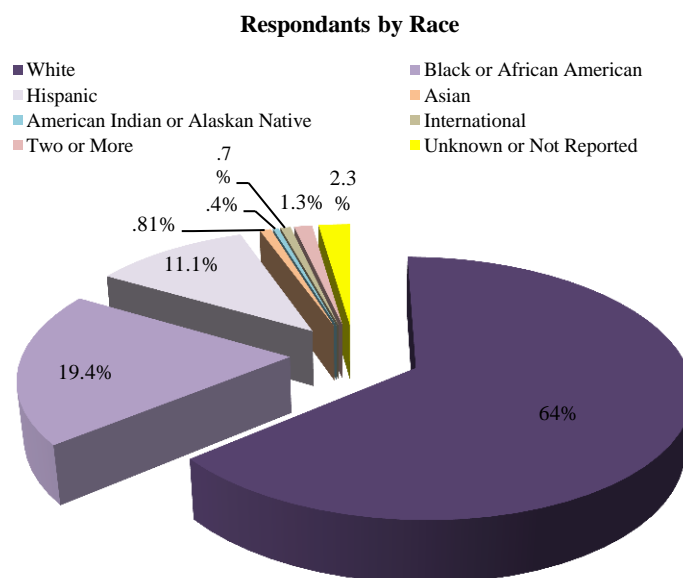


Chart 1

Question Responses

Students are asked to respond to both closed-ended questions about their experiences at SFASU as well as given the opportunity to answer open-ended questions where they could type responses. The responses from both types of questions are outlined below.

Closed-ended Questions. Students are first asked to answer a series of closed-ended questions regarding their experiences at SFASU while they were students.



Stephen F. Austin State University Senior Exit Survey Report

AY 2014 (Fall 2013 – Summer 2014)

Question 1. Where did you work while enrolled at SFA?

When students answered to the question if they have worked during the enrollment at SFA and where, 494 (40%) answered they worked off campus; 250 (20.2%) worked on campus; 202(16.3%) worked both on and off campus; 290 (23.5%) neither worked on nor off campus (Table 1 & Figure 3).

While enrolled at SFA, I was working		
	Frequency	Percent
Off Campus	494	40%
Neither	290	23.5%
On Campus	250	20.2%
Both	202	16.3%
Total	1236	100%

Table 1

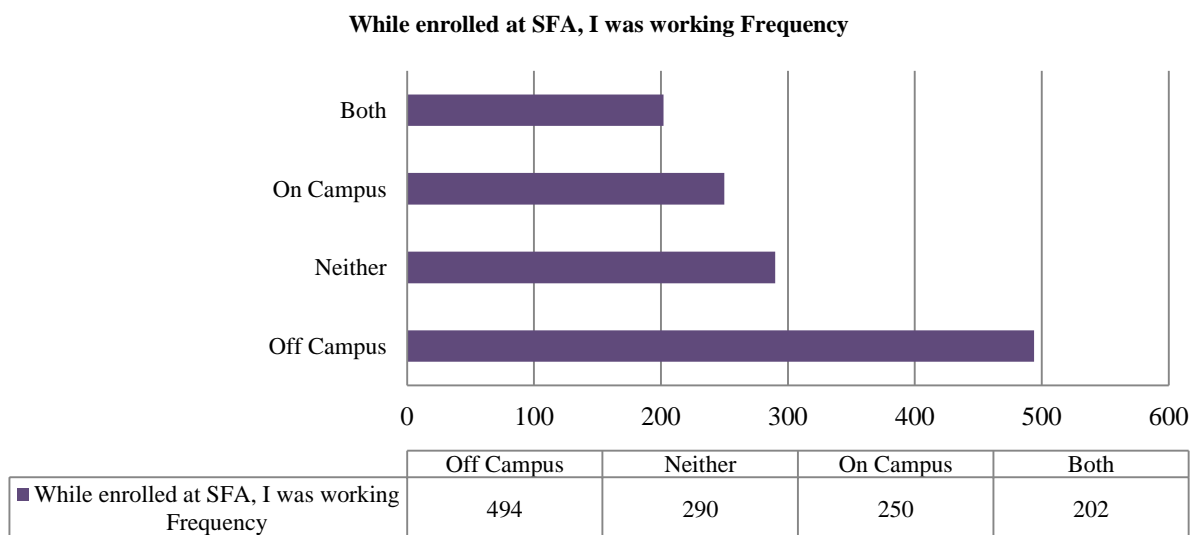


Figure 3

Question 2. How many hours did you work while enrolled at SFA?

Three hundred and fourteen students (25.4%) claimed they worked less than 5 hours per week when enrolled at SFA; 101 (8.2%) worked 6 -10 hours per week; 117 (9.5%) worked 11 – 15 hours per week, 230 (18.6%) students worked 16 – 20 hours per week; 137 (11.1%) students worked 21 -25 hours per week; 115 (9.3%) students worked 26 -30 hours per week; and 73 (5.9%) students claimed they worked over 40 hours per week (Table 2 & Figure 4).



Stephen F. Austin State University Senior Exit Survey Report

AY 2014 (Fall 2013 – Summer 2014)

While enrolled at SFA, I worked an average of ____ hours per week.

	Frequency	Percent
Less than 5	314	25.4%
6-10	101	8.2%
11-15	117	9.5%
16-20	230	18.6%
21-25	137	11.1%
26-30	115	9.3%
30-40	149	12.1%
More than 40	73	5.9%
Total	1236	100%

Table 2

While enrolled at SFA, I worked an average of ____hours per week.

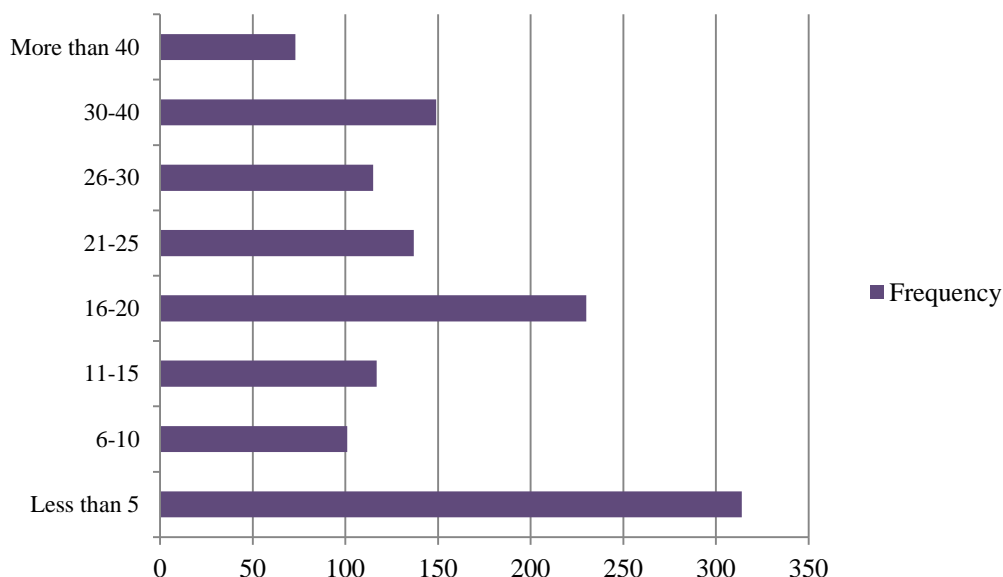


Figure 4

Question 3. Top 3 reasons choosing SFA.

Regarding the three most important reason for students staying at SFA, respondents' choices are: 609 (49.3%) chose "type of programs available"; 586 (47.4%) chose "Cost"; 556 (45%) chose "Location"; 460 (37.2%) chose "Size"; 261 (21.1%) chose "Social atmosphere"; 249 (20.1%) chose "Availability of scholarship financial aid"; 246 (19.9%) chose "Academic reputation"; 241 (19.5%) chose "To be with friends"; 146 (11.8%) chose "Advice of parents or relatives" (Table 3). One hundred and fifty-four (12.5%) chose "Other" with text input.



Stephen F. Austin State University Senior Exit Survey Report

AY 2014 (Fall 2013 – Summer 2014)

What were the three most important reasons for staying at SFA?

	Frequency	Percentage (N = 1236)
Type of programs available	609	49.3%
Cost	586	47.4%
Location	556	45.0%
Size	460	37.2%
Social atmosphere	261	21.1%
Availability of scholarship/financial aid	249	20.1%
Academic reputation	246	19.9%
To be with friends	241	19.5%
Advice of parents or relatives	146	11.8%
Other (please specify)	154	12.5%

Table 3

Question 4. Plans after graduation.

Six hundred and fifty students (52.6%) said they would interview for jobs; 629 (50.9%) would begin a new job; 565 (45.7%) would begin looking for a job; 473 (38.3%) would attend graduate school; 178 (14.4%) would continue a current job; 133 (10.8%) would start raise a family; 87 (7%) would pursue additional undergraduate education; 39 (3.2%) would go volunteer service; 21 (1.7%) would service in the military; 6 (0.5%) chose no plans for a job at this time; and 42 (3.4%) chose other (Figure 5).

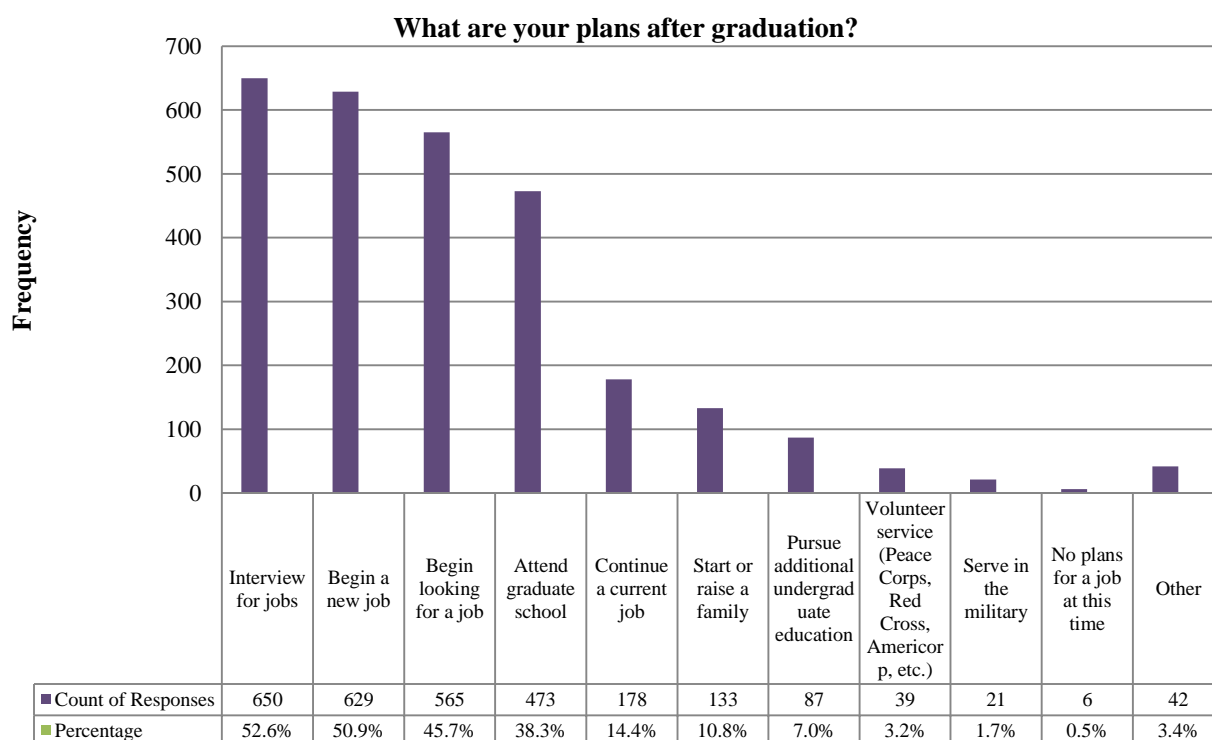


Figure 5



Stephen F. Austin State University Senior Exit Survey Report

AY 2014 (Fall 2013 – Summer 2014)

Question 5. General Experience at SFA:

Five statements were asked to students to evaluate their experience at SFA with a five-Likert-scale point: 5 = Strongly Agree; 4 = Agree; 3 = Neither Agree nor Disagree; 2 = Disagree; 1 = Strongly Disagree. The average of the answer is desired equal or greater than 3.5. A total of 1236 students evaluated the statements (Table 4).

1. Overall, I had a satisfying educational experience at SFA. The statement had an average of 4.37; 564 (45.6%) rated 5; 603 (48.8%) students rated 4; 40 (3.2%) students rated 3; 24 (1.9%) students rated 2; and 5 (0.4%) students rated 1.
2. I would definitely recommend SFA to others. Students gave an average of 4.35; 619 (50.1%) rated 5; 483 (39.1%) rated 4; 93 (7.5%) rated 3; 27 (2.2%) rated 2; and 14 (1.1%) rated 1.
3. I felt a sense of community in my time at SFA. Students gave an average of 4.18; 527 (42.6%) students rated 5; 491 (39.7%) rated 4; 150 (12.1%) rated 3; 50 (4%) rated 2; and 18 (1.5%) rated 1.
4. If I could start college over, I would choose to graduate with the same major. Students gave an average of 4.14; 648 (52.4%) rated 5; 305 (24.7%) rated 4; 132 (10.7%) rated 3; 112 (9.1%) rated 2; and 39 (3.2%) rated 1.
5. If I could start college over, I would still choose SFA. Students gave an average of 4.09; 564 (45.6%) rated 5; 369 (29.9%) rated 4; 189 (15.3%) rated 3; 83 (6.7%) rated 2; and 31 (2.5%) rated 1.

Please tell us about your experience at SFA.

	Mean	Strongly Agree	Percent	Agree	Percent	Neither Agree Nor Disagree	Percent	Disagree	Percent	Strongly Disagree	Percent
• Overall, I had a satisfying educational experience at SFA.	4.37	564	45.6%	603	48.8%	40	3.2%	24	1.9%	5	0.4%
• I would definitely recommend SFA to others.	4.35	619	50.1%	483	39.1%	93	7.5%	27	2.2%	14	1.1%
• I felt a sense of community in my time at SFA.	4.18	527	42.6%	491	39.7%	150	12.1%	50	4.0%	18	1.5%
• If I could start college over, I would choose to graduate with the same major.	4.14	648	52.4%	305	24.7%	132	10.7%	112	9.1%	39	3.2%
• If I could start college over, I would still choose SFA.	4.09	564	45.6%	369	29.9%	189	15.3%	83	6.7%	31	2.5%

Table 4



Stephen F. Austin State University Senior Exit Survey Report

AY 2014 (Fall 2013 – Summer 2014)

Question 6. Students' experience with fellow students:

Eight statements solicited students' perception about their experience with fellow students. Each statement is measured by a five-Likert-scale point: 5 = Strongly Agree; 4 = Agree; 3 = Neither Agree nor Disagree; 2 = Disagree; 1 = Strongly Disagree. The average of the answer is desired equal or greater than 3.5 (Table 5).

1. Regarding the statement Students in my major are motivated to learn, it gained an average rating at 4.25 (N = 1218); 511 (42%) students chose Strongly Agree; 546 (44.8%) students chose Agree; 127 (10.1%) rated Neutral; 25 (2.1%) chose Disagree; and 9 (0.7%) Strongly Disagree.
2. Students in my major are competitive with each other was rated at an average of 3.91 (N = 1218); 403 (33.1%) students chose Strongly Agree; 431 (35.4%) rated it at 4; 279 (22.9%) rated it as Neutral; 80 (6.6%) students chose Disagree; and 25 (2.1%) students chose Strongly Disagree.
3. When rating Students in my major are supportive and help each other meet the academic demands of the program, the statement received an average of 4.25 (N = 1224); 546 (44.6%) students chose Strongly Agree; 496 (40.5%) students chose Agree; 137 (11.2%) chose Neutral; 36 (2.9%) chose Disagree; and 9 (0.7%) chose Strongly Disagree.
4. Regarding the statement of Students in my major are interested in a broad range of ideas from many disciplines, it received an average rating of 4.15 (N = 1215); 486 (40%) students chose Strongly Agree; 495 (40.7%) chose Agree, 176 (14.5%) chose Neutral; 48 (4%) chose Disagree; and 10 (0.8%) chose Strongly Disagree.
5. Students rated Students in my major are career oriented with an average of 4.28 (N = 1217); 564 (46.3%) students chose Strongly Agree; 468 (38.5%) chose Agree; 156 (12.8%) chose Neutral; 22 (1.8%) chose Disagree; and 7 (0.6%) chose Strongly Disagree.
6. Students in my major communicate effectively received an average rating of 4.17 (N = 1227); 500 (40.7%) chose Strongly Agree, 502 (40.9%) chose Agree; 173 (14.1%) chose Neutral; 37 (3%) chose Disagree; and 15 (1.2%) chose Strongly Disagree.
7. Students in my major are academically honest received an average rating of 4.23 (N = 1212); 526 (43.4%) students chose Strongly Agree; 492 (40.6%) chose Agree; 154 (12.7%) chose Neutral; 28 (2.3%) chose Disagree; and 12 (1%) chose Strongly Disagree.
8. When rating Students in my major are willing to contribute to group work, students gave an average of 4.17 (N = 1227); 512 (41.7%) chose Strongly Agree; 492 (40.1%) chose Agree; 160 (13%) chose Neutral; 40 (3.3%) chose Disagree; and 23 (1.9%) chose Strongly Disagree.



Stephen F. Austin State University Senior Exit Survey Report

AY 2014 (Fall 2013 – Summer 2014)

Please tell us about your experience with fellow students in your major during your study at SFA.

	Mean	Strongly Agree	Percent	Agree	Percent	Neither Agree Nor Disagree	Percent	Disagree	Percent	Strongly Disagree	Percent	Total Head Count
• Students in my major are motivated to learn.	4.25	511	42%	546	44.8%	127	10.4%	25	2.1%	9	0.7%	1218
• Students in my major are competitive with each other.	3.91	403	33.1%	431	35.4%	279	22.9%	80	6.6%	25	2.1%	1218
• Students in my major are supportive and help each other meet the academic demands of the program.	4.25	546	44.6%	496	40.5%	137	11.2%	36	2.9%	9	0.7%	1224
• Students in my major are interested in a broad range of ideas from many disciplines.	4.15	486	40%	495	40.7%	176	14.5%	48	4.0%	10	0.8%	1215
• Students in my major are career oriented.	4.28	564	46.3%	468	38.5%	156	12.8%	22	1.8%	7	0.6%	1217
• Students in my major communicate effectively.	4.17	500	40.7%	502	40.9%	173	14.1%	37	3.0%	15	1.2%	1227
• Students in my major are academically honest.	4.23	526	43.4%	492	40.6%	154	12.7%	28	2.3%	12	1.0%	1212
• Students in my major are willing to contribute to group work.	4.17	512	41.7%	492	40.1%	160	13%	40	3.3%	23	1.9%	1227

Table 5

Question 7 Students' experience with faculty:

Fifteen statements solicited students' perception about their experience with fellow students. All the students (N = 1236) answered the 15 questions. Each statement is measured by a five-Likert-scale point: 5 = Strongly Agree (SA); 4 = Agree (A); 3 = Neither Agree nor Disagree (N); 2 = Disagree (DA); 1 = Strongly Disagree (SD). The average of the answer is desired equal or greater than 3.5 (Table 6).

1. Regarding the statement of Faculty are knowledgeable about what they are teaching, students rated an average of 4.49; 689 (55.7%) chose Strongly Agree; 477 (38.6%) students chose Agree; 57 (4.6%) students chose Neutral; 11 (0.9%) chose Disagree; and 2 (0.2%) students chose Strongly Disagree.
2. Faculty have good instructional skills received an average rating of 4.29; 535 (43%) chose Strongly Agree; 564 (45.6%) students chose Agree; 108 (8.7%) chose Neutral; 23 (1.9%) students chose Disagree; and 6 (0.5%) students chose Strongly Disagree.
3. Students rated Faculty are effective teachers with an average of 4.33; 558 (45.1%) students chose Strongly Agree; 548 (44.3%) chose Agree; 111 (9%) students chose Neutral; 17 (1.4%) chose Disagree; and 2 (0.2%) students chose Strongly Disagree.
4. Faculty are interested in the personal development of students received an average rating of 4.32; 587 (47.5%) students chose Strongly Agree; 495 (40%) chose Agree; 126 (10.2%)



Stephen F. Austin State University Senior Exit Survey Report

AY 2014 (Fall 2013 – Summer 2014)

students chose Neutral; 21 (1.7%) chose Disagree; and 7 (0.6%) students chose Strongly Disagree.

5. Regarding the statement of Faculty are interested in the academic development of students, participants rated an average of 4.37; 604 (48.9%) students chose Strongly Agree; 506 (40.9%) chose Agree; 105 (8.5%) students chose Neutral; 17 (1.4%) chose Disagree; and 4 (0.3%) students chose Strongly Agree.
6. Faculty are interested in the professional and career development of students received an average rating of 4.35; 613 (49.6%) students chose Strongly Agree; 480 (38.8%) chose Agree; 107 (8.7%) students chose Neutral; 30 (2.4%) chose Disagree; and 6 (0.5%) students chose Strongly Disagree.
7. Students rated Faculty introduces students to a broad range of ideas, perspectives and worldviews with an average of 4.33; 587 (47.5%) chose Strongly Agree; 511 (41.3%) students chose Agree; 106 (8.6%) students chose Neutral; 25 (2%) chose Disagree; and 7 (0.6%) students chose Strongly Disagree.
8. Students rated Faculty respond to undergraduate students regarding their needs, concerns and suggestions with an average of 4.28; 565 (45.7%) students chose Strongly Agree; 505 (40.9%) chose Agree; 127 (10.3%) students chose Neutral; 27 (2.2%) chose Disagree and 12 (1%) students chose Strongly Disagree.
9. Regarding the statement of Students are encouraged to become acquainted with the department's faculty, students rated an average of 4.23; 542 (43.9%) chose Strongly Agreed; 491 (39.7%) students chose Agree; 157 (12.7%) chose Neutral; 38 (3.1%) chose Disagree and 8 (0.6%) students chose Strongly Disagree.
10. Students are encouraged to participate in professional clubs and organizations received an average rating of 4.22; 538 (43.5%) students chose Strongly Agree; 491 (39.7%) chose Agree; 161 (13%) students chose Neutral; 39 (3.1%) chose Disagree; and 8 (0.6%) students chose Strongly Disagree.
11. Students gave the statement of Students are encouraged to attend professional seminars and presentations an average rating of 4.24; 545 (44.1%) chose Strongly Agree; 492 (39.8%) students chose Agree; 155 (12.5%) students chose Neutral; 40 (3.2%) chose Disagree; and 4 (0.3%) students chose Strongly Disagree.
12. When rating Students are encouraged to become familiar with current and emerging technology, students gave the statement an average of 4.20; 527 (42.6%) chose Strongly Agree, 497 (40.20%) chose Agree; 155 (12.5%) students chose Neutral; 51 (4.1%) students chose Disagree; and 6 (5%) chose Strongly Disagree.
13. Students gave the statement Students are encouraged to participate in research or creative projects with faculty or other students, an average rating of 4.16; 515 (41.7%) chose Strongly Agreed; 473 (38.30%) students chose Agree; 181 (14.6%) chose Neutral; 60 (4.9%) chose Disagree; and 7 (0.6%) students chose Strongly Disagree.



Stephen F. Austin State University Senior Exit Survey Report

AY 2014 (Fall 2013 – Summer 2014)

14. I found my major to be characterized by mutual respect between undergraduate majors and professors received an average rating of 4.34; 605 (48.9%) chose Strongly Agree; 488 (39.50%) chose Agree; 107 (8.7%) students chose Neutral; 27 (2.2%) chose Disagree; and 9 (0.7%) students chose Strongly Disagree.
15. Students rated the statement I found my major to be academically stimulating with an average of 4.42: 656 (53.1%) students chose Strongly Agree; 471 (38.1%) chose Agree; 84 (6.80%) students chose Neutral; 20 (1.6%) chose Disagree and 5 (0.4%) students chose Strongly Disagree.

Please tell us about your experience with faculty in your major at SFA.

	Mean	SA	Percent	A	Percent	N	Percent	DA	Percent	SD	Percent
• Faculty are knowledgeable about what they are teaching.	4.49	689	55.7%	477	38.6%	57	4.6%	11	0.9%	2	0.2%
• Faculty have good instructional skills.	4.29	535	43%	564	45.6%	108	8.7%	23	1.9%	6	0.5%
• Faculty are effective teachers.	4.33	558	45.1%	548	44.3%	111	9%	17	1.4%	2	0.2%
• Faculty are interested in the personal development of students.	4.32	587	47.5%	495	40%	126	10.2%	21	1.7%	7	0.6%
• Faculty are interested in the academic development of students.	4.37	604	48.9%	506	40.9%	105	8.5%	17	1.4%	4	0.3%
• Faculty are interested in the professional, and career development of students.	4.35	613	49.6%	480	38.8%	107	8.7%	30	2.4%	6	0.5%
• Faculty introduce students to a broad range of ideas, perspectives and worldviews.	4.33	587	47.5%	511	41.3%	106	8.6%	25	2%	7	0.6%
• Faculty respond to undergraduate students regarding their needs, concerns, and suggestions.	4.28	565	45.7%	505	40.9%	127	10.3%	27	2.2%	12	1%
• Students are encouraged to become acquainted with the department's faculty.	4.23	542	43.9%	491	39.7%	157	12.7%	38	3.1%	8	0.6%
• Students are encouraged to participate in professional clubs and organizations.	4.22	538	43.5%	491	39.7%	161	13%	39	3.1%	8	0.6%
• Students are encouraged to attend professional seminars and presentations.	4.24	545	44.1%	492	39.8%	155	12.5%	40	3.2%	4	0.3%
• Students are encouraged to become familiar with current and emerging technology.	4.20	527	42.6%	497	40.20%	155	12.5%	51	4.1%	6	5%
• Students are encouraged to participate in research or creative projects with faculty or other students.	4.16	515	41.7%	473	38.30%	181	14.6%	60	4.9%	7	0.6%
• I found my major to be characterized by mutual respect between undergraduate majors and professors.	4.34	605	48.9%	488	39.50%	107	8.7%	27	2.2%	9	0.7%
• I found my major academically stimulating.	4.42	656	53.1%	471	38.1%	84	6.80%	20	1.6%	5	0.4%

*5 = Strongly Agree (SA); 4 = Agree (A); 3 = Neither Agree nor Disagree (N); 2 = Disagree (DA); 1 = Strongly Disagree (SD)

Table 6



Stephen F. Austin State University Senior Exit Survey Report

AY 2014 (Fall 2013 – Summer 2014)

Question 8 Students 'level of satisfaction with the SFA Services:

Thirty areas of services were evaluated by 1236 students. Students were given a five-Likert-scale point to measure the levels: 5 = Very Satisfied; 4 = Satisfied; 3 = Neutral; 2 = Dissatisfied; 1 = Very Dissatisfied. Students were also allowed to choose Never used/Not Applicable if they have no opinion towards the services (Table 7).

1. Regarding New Student Orientation, a total of 992 (80.3%) students rated the service. The average was 3.94; 294 (23.8%) students claimed they were Very Satisfied; 420 (34%) rated Satisfied; 220 (17.8%) rated Neutral, 38 (3.1%) rated Dissatisfied; and 20 (1.6%) students were Very Dissatisfied; 244 (19.7%) students did not give evaluation.
2. Student Financial Aid Services were rated by 1119 (90.5%) students. The average was 3.67; 261 (21.1%) students stated they were Very Satisfied; 444 (35.9%) reported being Satisfied; 249 (20.1%) rated Neutral, 110 (8.9%) students reported being Dissatisfied; 55 (4.4%) were Very Dissatisfied and 117 (9.5%) students did not give an evaluation.
3. Registrar services were rated by 1219 (98.6%) students; the average rating was 3.91; 311 (25.2%) reported being Very Satisfied; 571 (46.2%) were Satisfied; 264 (21.4%) rated Neutral; 60 (4.9%) students claimed they were Dissatisfied; 13 (1.1%) were Very Dissatisfied; 17 (1.4%) did not evaluate this service.
4. Disability Services were evaluated by 586 (47.4%) students and the average was 3.85; 171 (13.8%) students were Very Satisfied; 169 (13.7%) claimed they were Satisfied; 237 (19.2%) rated Neutral; 4 (0.3%) were Dissatisfied; 5 (0.4%) were Very Dissatisfied; 650 (52.6%) students responded with Not Applicable.
5. Counseling Services were evaluated by 756 (61.2%) students; the average rating was 3.96; 243 (19.7%) reported being Very Satisfied; 276 (22.3%) were Satisfied; 209 (16.9%) rated Neutral; 19 (1.5%) were Dissatisfied; 9 (0.7%) reported being Very Dissatisfied; 480 (38.8%) students responded with Not Applicable.
6. Services offered by Multicultural Affairs were evaluated by 645 (52.2%) students with an average rating of 3.86; 176 (14.2%) students claimed they were Very Satisfied; 225 (18.2%) were Satisfied; 227 (18.4%) rated Neutral; 9 (0.7%) claimed they were Dissatisfied; 8 (0.6%) were Very Dissatisfied; and 645 (52.2%) students did not evaluate this service.
7. Regarding Access to Electronic Library Resources (database, electronic journals and books), 1163 (94.1%) students gave evaluations; the mean was 4.21; 462 (37.4%) students were Very Satisfied; 518 (41.9%) students were Satisfied; 154 (12.5%) rated Neutral; 21 (1.7%) reported being Dissatisfied; 8 (0.6%) were Very Dissatisfied and 73 (5.9%) students did not give an evaluation.
8. Library Staff services were rated by 1096 (88.7%) students and the average was 4.11; 376 (30.40%) presorted being Very Satisfied; 494 (40%) students were Satisfied; 205 (16.6%)



Stephen F. Austin State University Senior Exit Survey Report

AY 2014 (Fall 2013 – Summer 2014)

- rated Neutral; 13 (1.1%) reported being very Dissatisfied; 8 (0.6%) students were Very Dissatisfied and 140 (11.3%) students responded with Not Applicable.
9. Services offered by Library Holdings were evaluated by 955 (77.3%) student; the average rating was 4.03; 302 (24.4%) students reported being Very Satisfied; 406 (32.8%) were Satisfied; 230 (18.6%) rated Neutral; 10 (0.8%) claimed they were Dissatisfied; 7 (0.6%) were Very Dissatisfied; 281 (22.7%) did not give an evaluation.
 10. Regarding services offered by Library Facilities, 1141 (92.3%) students provided evaluations with an average rating of 4.12; 404 (32.7%) students were Very Satisfied; 517 (41.8%) stated they were Satisfied; 182 (14.7%) rated Neutral; 30 (2.4%) reported being Dissatisfied; 8 (0.6%) claimed they were Very Dissatisfied and 95 (7.7%) students did not evaluate this service.
 11. SFA Campus Dining (Food Services) was evaluated by 1064 (86.1%) students and the average rating was 3.60; 218 (17.6%) students reported being Very Satisfied; 423 (34.2%) claimed they were Satisfied; 260 (21%) rated Neutral; 102 (8.3%) reported being Dissatisfied; 61 (4.9%) students claimed they were Very Dissatisfied and 172 (13.9%) did give an evaluation.
 12. Resident Hall Facilities were evaluated by 909 (73.5%) students; the mean was 3.58; 188 (15.2%) were Very Satisfied; 335 (27.1%) reported being Satisfied; 248 (20.1%) rated Neutral; 90 (7.3%) claimed they were Dissatisfied; 48 (3.9%) were Very Dissatisfied; 327 (26.5%) students responded with Not Applicable.
 13. Resident Hall Services were 903 (73.1%) students with an average of 3.59; 187 (15.1%) claimed they were Very Satisfied; 338(27.3%) stated they were Satisfied; 252 (20.4%) rated Neutral; 77 (6.2%) reported they were Dissatisfied; 49 (4%) claimed they were Very Dissatisfied; 333 (26.9%) students did not give an evaluation.
 14. Greek Experience (fraternity/sorority) services were evaluated by 662 (53.6%) students; the average rating was 3.79; 229 (18.5%) reported they were Very Satisfied; 165 (13.3%) claimed they were Satisfied; 204 (16.5%) rated Neutral; 29 (2.3%) students stated they were Dissatisfied; 35 (2.8%) were Very Dissatisfied and 574 (46.4%) students did not evaluate this service.
 15. Leadership and Service Programs (ODK, MLK Day) were evaluated by 735 (59.5%) students with an average rating of 3.93; 236 (19.1%) students stated they were Very Satisfied; 250 (20.2%) were Satisfied; 225 (18.2%) rated Neutral; 9 (0.7%) were Dissatisfied; 15 (1.2%) reported being Very Dissatisfied and 501 (40.5%) students did not given an evaluation.
 16. Services offered by Campus Clubs and Organizations (Academic/Non-Academic) were evaluated by 959 (77.6%) students and the average rating was 4.13; 370 (29.9%) students claimed they were Very Satisfied; 377 (30.5%) were Satisfied; 190 (15.4%) rated Neutral;



Stephen F. Austin State University Senior Exit Survey Report

AY 2014 (Fall 2013 – Summer 2014)

- 10 (0.8%) reported being Dissatisfied; 12 (1%) were Very Dissatisfied; 277 (22.4%) students responded with Not Applicable.
17. Regarding Campus Bookstore (Barnes & Noble) services, 1174 (95%) students gave an evaluation; the average rating was 3.75; 289 (23.4%) students reported being Very Satisfied; 493 (39.9%) stated they were Satisfied; 257 (20.8%) rated Neutral; 84 (6.8%) reported being Dissatisfied; 51 (4.1%) stated they were Very Dissatisfied and 62 (5%) students did not evaluate this service.
18. Services offered by the Pine Log were evaluated by 930 (75.2%) students and the average rating was 3.87; 258 (20.9%) students claimed they were Very Satisfied; 363 (29.4%) stated that they were Satisfied; 262 (21.4%) rated Neutral; 19 (1.5%) were Dissatisfied; 26 (2.1%) were Very Dissatisfied; 306 (24.8%) students did not give an evaluation.
19. Campus Recreational Services were evaluated by 1085 (87.8%) students with an average rating of 4.33; 525 (42.5%) students were Very Satisfied; 418 (33.8%) were Satisfied; 126 (10.2%) rated Neutral; 10 (0.8%) students reported being Dissatisfied; 6 (0.5%) students were Very Dissatisfied and 151 (12.2%) students responded with Not Applicable.
20. Student Rights and Responsibilities services were evaluated by 999 (80.8%) students; the mean was 4.03; 338 (27.3%) were Very Satisfied; 400 (32.4%) were Satisfied; 231 (18.7%) students rated Neutral; 13 (1.1%) were Dissatisfied; 19 (1.4%) reported being Very Dissatisfied and 237 (19.2%) did not evaluate this service.
21. Career Services were evaluated by 967 (78.2%) and the average rating was 4.08; 354 (28.6%) claimed they were Very Satisfied; 388 (31.4%) reported being Satisfied; 189 (15.3%) rated Neutral; 16 (1.3%) students were Dissatisfied; 20 (1.6%) stated they were Very Dissatisfied and 269 (21.8%) students did not give an evaluation.
22. Regarding Students' Health Service, 982 (79.4%) gave an evaluation and the average rating was 3.78; 276 (22.3%) students claimed they were Very Satisfied; 367 (29.7%) reported being Satisfied; 228 (18.4%) rated Neutral; 71 (5.7%) students were Dissatisfied; 40 (3.2%) students reported being Very Dissatisfied; 254 (20.6%) students responded with Not Applicable.
23. Parking Services were evaluated by 1127 (91.2%); the mean was 2.82; 166 (13.4%) reported being Very Satisfied; 231 (18.7%) claimed they were Satisfied; 249 (20.1%) rated Neutral; 195 (15.8%) were Dissatisfied; 286 (23.1%) were Very Dissatisfied and 109 (8.8%) did not evaluate this service.
24. Parking Facilities were evaluated by 1142 (92.4%) students and the average rating was 2.92; 177 (14.3%) reported being Very Satisfied; 272 (22%) were Satisfied; 239 (19.3%) rated Neutral; 189 (15.3%) were Dissatisfied; 265 (21.4%) stated they were Very Dissatisfied and 94 (7.6%) students did not evaluate this service.
25. Parking Availability was evaluated by 1130 (91.4%) students and that average rating was 2.37; 129 (10.4%) reported being Very Satisfied; 154 (12.5%) were Satisfied; 160 (12.9%)



Stephen F. Austin State University Senior Exit Survey Report

AY 2014 (Fall 2013 – Summer 2014)

- rated Neutral; 252 (20.4%) claimed they were Dissatisfied; 435 (35.2%) reported being Very Dissatisfied; 106 (8.6%) students responded with Not Applicable.
26. Services offered by Campus Security were evaluated by 1114 (90.1%) students with an average rating of 3.91; 348 (28.2%) reported being Very Satisfied; 427 (34.5%) were Satisfied; 259 (21%) rated Neutral; 49 (4%) were Dissatisfied; 31 (2.5%) claimed they were Very Dissatisfied and 122 (9.9%) students did not give an evaluation.
27. Services offered by the Veterans Resource Center were evaluated by 550 (44.5%) students and the average rating was 3.81; 158 (12.8%) were Very Satisfied; 150 (12.1%) were Satisfied; 229 (18.5%) rated Neutral; 7 (0.6%) reported being Dissatisfied; 6 (0.5%) claimed they were Very Dissatisfied; 686 (55.5%) responded with Not Applicable.
28. Regarding services offered by Admissions, 1202 (97.2%) students gave an evaluation and the mean was 4.09; 388 (31.4%) students claimed they were Very Satisfied; 571 (46.2%) were Satisfied; 214 (17.3%) rated Neutral; 21 (1.7%) reported being Dissatisfied; 8 (0.6%) claimed they were Very Dissatisfied; 34 (2.8%) did not evaluate this service.
29. Services offered by the Business Office were evaluated by 1206 (97.6%) students; the average rating was 3.92; 348 (28.2%) students claimed they were Very Satisfied; 556 (45%) were Satisfied; 203 (16.4%) rated Neutral; 60 (4.9%) reported being Dissatisfied; 39 (3.2%) were Very Dissatisfied and 30 (2.4%) did not give an evaluation.
30. Academic Advising services were evaluated by 1215 (98.3%) students and the average rating was 3.99; 453 (36.7%) stated they were Very Satisfied; 466 (37.7%) were Satisfied; 179 (14.5%) rated Neutral; 62 (5%) reported being Dissatisfied; 55 (4.4%) were Very Dissatisfied; 21 (1.7%) students responded with Not Applicable.

Please tell us about your level of satisfaction with the following / SFA Services:

	N	Response Rate	Mean	Very Satisfied	Satisfied	Neutral	Dissatisfied	Very Dissatisfied	N/A
• New Student Orientation	992	80.3%	3.94	294 (23.8%)	420 (34%)	220 (17.8%)	38 (3.1%)	20 (1.6%)	244 (19.7%)
• Student Financial Aid services	1119	90.5%	3.67	261 (21.1%)	444 (35.9%)	249 (20.1%)	110 (8.9%)	55 (4.4%)	117 (9.5%)
• Registrar	1219	98.6%	3.91	311 (25.2%)	571 (46.2%)	264 (21.4%)	60 (4.9%)	13 (1.1%)	17 (1.4%)
• Disability Services	586	47.4%	3.85	171 (13.8%)	169 (13.7%)	237 (19.2%)	4 (0.3%)	5 (0.4%)	650 (52.6%)
• Counseling Services	756	61.2%	3.96	243 (19.7%)	276 (22.3%)	209 (16.9%)	19 (1.5%)	9 (0.7%)	480 (38.8%)
• Multicultural Affairs	645	52.2%	3.86	176 (14.2%)	225 (18.2%)	227 (18.4%)	9 (0.7%)	8 (0.6%)	645 (52.2%)
• Access to Electronic Library Resources (database, electronic journals and books)	1163	94.1%	4.21	462 (37.4%)	518 (41.9%)	154 (12.5%)	21 (1.7%)	8 (0.6%)	73 (5.9%)
• Library Staff	1096	88.7%	4.11	376 (30.4%)	494 (40%)	205 (16.6%)	13 (1.1%)	8 (0.6%)	140 (11.3%)
• Library Holdings	955	77.3%	4.03	302 (24.4%)	406 (32.8%)	230 (18.6%)	10 (0.8%)	7 (0.6%)	281 (22.7%)
• Library Facilities	1141	92.3%	4.12	404 (32.7%)	517 (41.8%)	182 (14.7%)	30 (2.4%)	8 (0.6%)	95 (7.7%)
• SFA Campus Dining (Food Services)	1064	86.1%	3.60	218 (17.6%)	423 (34.2%)	260 (21%)	102 (8.3%)	61 (4.9%)	172 (13.9%)
• Resident Hall Facilities	909	73.5%	3.58	188 (15.2%)	335 (27.1%)	248 (20.1%)	90 (7.3%)	48 (3.9%)	327 (26.5%)



Stephen F. Austin State University Senior Exit Survey Report

AY 2014 (Fall 2013 – Summer 2014)

• Resident Hall Services	903	73.1%	3.59	187 (15.1%)	338 (27.3%)	252 (20.4%)	77 (6.2%)	49 (4%)	333 (26.9%)
• Greek Experience (fraternity/sorority)	662	53.6%	3.79	229 (18.5%)	165 (13.3%)	204 (16.5%)	29 (2.3%)	35 (2.8%)	574 (46.4%)
• Leadership and Service Programs (ODK, MLK Day)	735	59.5%	3.93	236 (19.1%)	250 (20.2%)	225 (18.2)	9 (0.7%)	15 (1.2%)	501 (40.5%)
• Campus Clubs/Organizations (Academic/Nonacademic)	959	77.6%	4.13	370 (29.9%)	377 (30.5%)	190 (15.4%)	10 (0.8%)	12 (1%)	277 (22.4%)
• Campus Bookstore (Barnes & Noble)	1174	95.0%	3.75	289 (23.4%)	493 (39.9%)	257 (20.8%)	84 (6.8%)	51 (4.1)	62 (5%)
• Pine Log	930	75.2%	3.87	258 (20.9%)	363 (29.4%)	264 (21.4%)	19 (1.5%)	26 (2.1%)	306 (24.8%)
• Campus Recreational Services	1085	87.8%	4.33	525 (42.5%)	418 (33.8%)	126 (10.2%)	10 (0.8%)	6 (0.5%)	151 (12.2%)
• Student Rights & Responsibilities	999	80.8%	4.03	338 (27.3%)	400 (32.4%)	231 (18.7%)	13 (1.1%)	19 (1.4%)	237 (19.2%)
• Career Services	967	78.2%	4.08	354 (28.6%)	388 (31.4%)	189 (15.3%)	16 (1.3%)	20 (1.6%)	269 (21.8%)
• Students' Health Services	982	79.4%	3.78	276 (22.3%)	367 (29.7%)	228 (18.4%)	71 (5.7%)	40 (3.2%)	254 (20.6%)
• Parking Services	1127	91.2%	2.82	166 (13.4%)	231 (18.7%)	249 (20.1%)	195 (15.8%)	286 (23.1%)	109 (8.8%)
• Parking Facilities	1142	92.4%	2.92	177 (14.3%)	272 (22%)	239 (19.3%)	189 (15.3%)	265 (21.4%)	94 (7.6%)
• Parking Availability	1130	91.4%	2.37	129 (10.4%)	154 (12.5%)	160 (12.9%)	252 (20.4%)	435 (35.2%)	106 (8.6%)
• Campus Security	1114	90.1%	3.91	348 (28.2%)	427 (34.5%)	259 (21%)	49 (4%)	31 (2.5%)	122 (9.9%)
• Veterans Resource Center	550	44.5%	3.81	158 (12.8%)	150 (12.1%)	229 (18.5%)	7 (0.6%)	6 (0.5%)	686 (55.5%)
• Admissions	1202	97.2%	4.09	388 (31.4%)	571 (46.2%)	214 (17.3%)	21 (1.7%)	8 (0.6%)	34 (2.8%)
• The Business Office	1206	97.6%	3.92	348 (28.2%)	556 (45%)	203 (16.4%)	60 (4.9%)	39 (3.2%)	30 (2.4%)
• Academic Advising	1215	98.3%	3.99	453 (36.7%)	466 (37.7%)	179 (14.5%)	62 (5%)	55 (4.4%)	21 (1.7%)

Table 7

Question 9 Students' participation in the programs:

Students were asked to check all that applied to their experience of participating in SFASU programs: 231 (18.7%) students indicated that they were involved in service learning project; 120 (9.7%) participated in paid internship(s); 331 (26.8%) in non-paid internship(s); 352 (28.5%) in course credit internship(s); 50 (4%) in non-course credit internship(s); 111 (9%) in SFA faculty research project; 60 (4.9%) in Non-SFA faculty research project; 191 (15.5%) in a collaborative learning project; and 515 (41.7%) chose none (Figure 6).



Stephen F. Austin State University Senior Exit Survey Report

AY 2014 (Fall 2013 – Summer 2014)

Please indicate your participation in the programs given below
(Check all that apply):

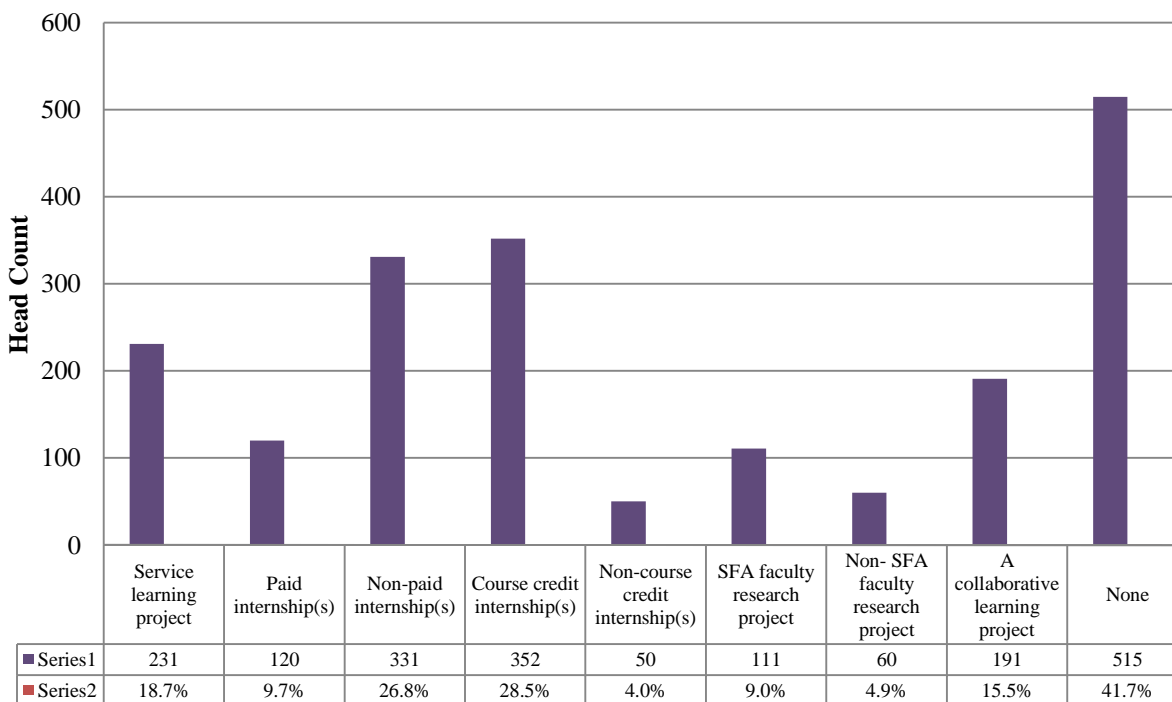


Figure 6

Question 10 Students' perception about how much progress made in the areas:

All the students (N = 1236) answered the six questions regarding the perceptions of skills gained in the areas. Five-Likert-Scale was used with 5 = Excellent; 4 = Very Good; 3 = Good; 2 = Fair; and 1 = Poor (Table 8).

1. When asked about Critical Thinking Skills - creative Thinking, innovation, inquiry, analysis, evaluation, and synthesis of information, students' average was 4.19; 556 (45%) students chose Excellent; 426 (34.5%) chose Very good; 203 (16.4%) chose Good; 40 (3.2%) chose Fair; and 11 (0.9%) chose Poor.
2. When rating Communication Skills - effective development, interpretation, and expression of ideas through written, oral and visual Communication, students' average was 4.26; 593 (48%) rated themselves as Excellent; 414 (33.5%) rated Very Good; 191 (15.5%) rated Good; 30 (2.4%) rated Fair; and 8 (0.6%) rated Poor.
3. When evaluating Empirical and Quantitative Skills - the manipulation and analysis of numerical data or observable facts in informed conclusions, students' average was 3.96; 447 (36.2%) evaluated themselves as Excellent; 411 (33.3%) rated Very Good; 278 (22.5%) rated Good; 84 (6.8%) rated Fair; and 16 (1.3%) rated Poor.



Stephen F. Austin State University Senior Exit Survey Report

AY 2014 (Fall 2013 – Summer 2014)

4. Students rated Teamwork - the ability to consider different points of view and to work effectively with others to support a shared purpose or goal at an average of 4.24; 593 (48%) rated themselves as Excellent; 396 (32%) rated Very Good; 201 (16.3%) rated Good; 40 (3.2%) rated Fair; and 6 (0.5%) rated Poor.
5. Personal Responsibility - the ability to connect choices, actions, and consequences to ethical decision-making received an average of 4.35; 677 (54.8%) students chose to give themselves an Excellent level; 358 (29%) rated themselves Very Good; 165 (13.3%) rated themselves Good; 29 (2.3%) rated themselves Fair; and 7 (0.6%) rated Poor.
6. When rating Social Responsibility - intercultural competence, knowledge of civic Responsibility, and the ability to engage effectively in regional, national, and global communities, students' average was 4.23; 594 (48.1%) of them rated themselves as Excellent; 393 (31.8%) rated Very Good; 197 (15.9%) rated Good; 41 (3.3%) rated Fair; and 11 (0.9%) rated Poor.

As a result of studying at SFA, how much progress do you feel you have made in the following areas?

	Average	Excellent	Very Good	Good	Fair	Poor
• Critical Thinking Skills - creative Thinking, innovation, inquiry, analysis, evaluation, and synthesis of information	4.19	556 (45%)	426 (34.5%)	203 (16.4%)	40 (3.2%)	11 (0.9%)
• Communication Skills - effective development, interpretation, and expression of ideas through written, oral and visual Communication	4.26	593 (48%)	414 (33.5%)	191 (15.5%)	30 (2.4%)	8 (0.6%)
• Empirical and Quantitative Skills - the manipulation and analysis of numerical data or observable facts in informed conclusions	3.96	447 (36.2%)	411 (33.3%)	278 (22.5%)	84 (6.8%)	16 (1.3%)
• Teamwork - the ability to consider different points of view and to work effectively with others to support a shared purpose or goal	4.24	593 (48%)	396 (32%)	201 (16.3%)	40 (3.2%)	6 (0.5%)
• Personal Responsibility - the ability to connect choices, actions, and consequences to ethical decision-making	4.35	677 (54.8%)	358 (29%)	165 (13.3%)	29 (2.3%)	7 (0.6%)
• Social Responsibility - intercultural competence, knowledge of civic Responsibility, and the ability to engage effectively in regional, national, and global communities	4.23	594 (48.1%)	393 (31.8%)	197 (15.9%)	41 (3.3%)	11 (0.9%)

Table 8



Stephen F. Austin State University Senior Exit Survey Report

AY 2014 (Fall 2013 – Summer 2014)

I. Closed-end Question Responses Compared among Colleges

Question 1. Where did you work while enrolled at SFA?

College	Work Where	Frequency	Percent (%)	Cumulative Percent
Bu	On Campus	27	17.4	17.4
	Off Campus	63	40.6	58.1
	Both	20	12.9	71.0
	Neither	45	29.0	100.0
	Total	155	100.0	
ED	On Campus	86	16.9	16.9
	Off Campus	234	46.0	62.9
	Both	82	16.1	79.0
	Neither	107	21.0	100.0
	Total	509	100.0	
FA	On Campus	23	31.5	31.5
	Off Campus	20	27.4	58.9
	Both	13	17.8	76.7
	Neither	17	23.3	100.0
	Total	73	100.0	
FR	On Campus	12	20.7	20.7
	Off Campus	18	31.0	51.7
	Both	11	19.0	70.7
	Neither	17	29.3	100.0
	Total	58	100.0	
LA	On Campus	65	21.5	21.5
	Off Campus	114	37.7	59.3
	Both	53	17.5	76.8
	Neither	70	23.2	100.0
	Total	302	100.0	
SM	On Campus	37	26.6	26.6
	Off Campus	45	32.4	59.0
	Both	23	16.5	75.5
	Neither	34	24.5	100.0
	Total	139	100.0	

Table 9



Stephen F. Austin State University Senior Exit Survey Report

AY 2014 (Fall 2013 – Summer 2014)

Question 2. What were the three most important reasons for staying at SFA?

Eight choices were given to students to decide which three were the most important reasons for them to choose SFA. The choices include: Cost, Size, Social Atmosphere, Location, Type of Programs Available, Academic Reputation, Availability of Scholarship/Financial Aid, Advice of Parents or Relatives and to be with Friends.

One hundred and fifty-five students from College of Business chose Cost, Location and Size as the top three reasons they stayed at SFA; 509 students from College of Education chose Type of Programs Available, Cost and Size; 73 students from Fine Arts chose Types of Programs Available/Cost and Size; 58 students from Forestry chose Type of Programs Available, Location and Size; 302 students from Liberal Arts chose Cost, Location and Size; and 139 students from Silences and Math chose Location, Types of Programs Available and Cost.

Overall, Students chose **Cost** and **Type of Programs available** as the top reasons to study at SFA. **Location** was another strong decision-making factor, and **Size** is the third factor to help students determine to attend SFA (Table 10).

College	Total Head Count	Cost	Size	Social Atmosphere	Location	Type of Programs Available	Academic Reputation	Availability of Scholarship/Financial Aid	Advice of Parents or Relatives	To be with Friends
BU	155	93 (60%)	66 (42.6%)	36 (23.2%)	68 (43.9%)	48 (31%)	15 (9.7%)	24 (15.5%)	24 (15.5%)	45 (29%)
ED	509	207 (40.7%)	183 (36%)	102 (20%)	210 (41.3%)	297 (58.3%)	140 (27.5%)	107 (21%)	49 (9.6%)	81 (15.9%)
FA	73	43 (58.9%)	23 (31.5%)	18 (24.7%)	19 (26%)	43 (58.9%)	12 (16.4%)	14 (19.2%)	9 (12.3%)	20 (27.4%)
FR	58	19 (32.8%)	22 (37.9%)	9 (15.5%)	29 (50%)	36 (62.1%)	10 (17.2%)	11 (19%)	9 (15.5%)	5 (8.6%)
LA	302	161 (53.3%)	121 (40.1%)	71 (23.5%)	155 (51.3%)	112 (37.1%)	35 (11.6%)	58 (19.2%)	43 (14.2%)	67 (22.2%)
SM	139	63 (45.3%)	45 (32.4%)	25 (18%)	75 (54%)	73 (52.5%)	34 (24.5%)	35 (25.2%)	12 (8.6%)	23 (16.5%)

*Note: The highest percentage by colleges is highlighted in **Red**; the second highest is highlighted in **Green**, and the third highest percentage is highlighted in **Yellow**.

Table 10



Stephen F. Austin State University Senior Exit Survey Report

AY 2014 (Fall 2013 – Summer 2014)

Question 3. SFA Students' General Experience by College (Table 10):

(Note: the statement marked with '*' shows statistical significant differences at 95% confidence level, '**' shows 99% confidence level, '***' shows above 99.9% confidence level.)

Please tell us about your experience at SFA. (Strongly Agree – Strongly Disagree 5-1)		College	N	Mean	F Ratio and Sig
* Overall, I had a satisfying educational experience at SFA.	BU	155	4.36	F (5,1230) = 3.30 <i>p</i> = 0.006	
	ED	509	4.46		
	FA	73	4.27		
	FR	58	4.24		
	LA	302	4.28		
	SM	139	4.38		
	Total	1236	4.37		
*** I would definitely recommend SFA to others.	BU	155	4.37	F (5,1230) = 4.15 <i>p</i> = .001	
	ED	509	4.44		
	FA	73	4.29		
	FR	58	4.12		
	LA	302	4.22		
	SM	139	4.37		
	Total	1236	4.35		
*** I felt a sense of community in my time at SFA.	BU	155	4.24	F (5,1230) = 4.59 <i>p</i> = .000	
	ED	509	4.28		
	FA	73	4.23		
	FR	58	3.86		
	LA	302	4.03		
	SM	139	4.17		
	Total	1236	4.18		
*** If I could start college over, I would choose to graduate with the same major.	BU	155	4.04	F (5,1230) = 4.60 <i>p</i> = .000	
	ED	509	4.25		
	FA	73	3.97		
	FR	58	4.26		
	LA	302	3.94		
	SM	139	4.33		
	Total	1236	4.14		
*** If I could start college over, I would still choose SFA.	BU	155	3.88	F (5,1230) = 6.40 <i>p</i> = .000	
	ED	509	4.26		
	FA	73	4.08		
	FR	58	3.93		
	LA	302	3.91		
	SM	139	4.22		
	Total	1236	4.09		

Table 10



Stephen F. Austin State University Senior Exit Survey Report

AY 2014 (Fall 2013 – Summer 2014)

Question 4. Students' Experience with Fellow Students (Table 11):

Please tell us about your experience with fellow students in your major during your study at SFA.

(Strongly Agree – Strongly Disagree 5-1)	College	N	Mean	F Ratio and Sig
*** Students in my major are motivated to learn.	BU	153	4.19	F (5, 1212) = 9.54 p = .000
	ED	503	4.34	
	FA	73	4.08	
	FR	56	3.96	
	LA	297	4.11	
	SM	136	4.54	
	Total	1218	4.25	
*** Students in my major are competitive with each other.	BU	154	3.97	F (5, 1212) = 9.38 p = .000
	ED	501	3.90	
	FA	73	4.34	
	FR	55	3.56	
	LA	298	3.70	
	SM	137	4.20	
	Total	1218	3.91	
*** Students in my major are supportive and help each other meet the academic demands of the program.	BU	153	4.03	F (5, 1218) = 8.92 p = .000
	ED	504	4.39	
	FA	73	4.12	
	FR	58	4.16	
	LA	299	4.11	
	SM	137	4.42	
	Total	1224	4.25	
** Students in my major are interested in a broad range of ideas from many disciplines.	BU	152	3.99	F (5, 1209) = 2.88 p = .014
	ED	500	4.24	
	FA	73	3.97	
	FR	54	4.07	
	LA	299	4.14	
	SM	137	4.14	
	Total	1215	4.15	
*** Students in my major are career oriented.	BU	153	4.35	F (5, 1211) = 13.27 p = .000
	ED	505	4.37	
	FA	72	4.10	
	FR	55	4.16	
	LA	295	4.02	
	SM	137	4.58	
	Total	1217	4.28	
*** Students in my major communicate effectively.	BU	154	4.03	F (5, 1221) = 8.19 p = .000
	ED	508	4.29	
	FA	72	3.81	
	FR	58	3.91	
	LA	298	4.09	
	SM	137	4.34	
	Total	1227	4.17	
*** Students in my major are academically honest.	BU	153	4.08	F (5, 1206) = 6.08 p = .000
	ED	500	4.34	
	FA	73	3.97	
	FR	55	4.04	
	LA	295	4.16	
	SM	136	4.38	
	Total	1212	4.23	
** Students in my major are willing to contribute to group work.	BU	154	4.06	F (5, 1221) = 3.86 p = .002
	ED	508	4.25	
	FA	73	4.05	
	FR	57	4.02	
	LA	298	4.05	
	SM	137	4.35	
	Total	1227	4.17	

Table 11



Stephen F. Austin State University Senior Exit Survey Report

AY 2014 (Fall 2013 – Summer 2014)

Question 5. Students' Experience with Faculty (Table 12):

Please tell us about your experience with faculty in your major at SFA.

(Strongly Agree – Strongly Disagree 5-1)	College	N	Mean	F Ratio and Sig
** Faculty are knowledgeable about what they are teaching.	BU	155	4.4	F (5,1230) = 3.07 p = .009
	ED	509	4.53	
	FA	73	4.63	
	FR	58	4.43	
	LA	302	4.41	
	SM	139	4.57	
	Total	1236	4.49	
** Faculty have good instructional skills.	BU	155	4.23	F (5,1230) = 3.19 p = .007
	ED	509	4.36	
	FA	73	4.33	
	FR	58	4.05	
	LA	302	4.22	
	SM	139	4.35	
	Total	1236	4.29	
** Faculty are effective teachers.	BU	155	4.26	F (5, 1230) = 3.61 p = .003
	ED	509	4.4	
	FA	73	4.38	
	FR	58	4.07	
	LA	302	4.26	
	SM	139	4.35	
	Total	1236	4.33	
*** Faculty are interested in the personal development of students.	BU	155	4.21	F (5, 1230) = 4.46 p = .000
	ED	509	4.41	
	FA	73	4.38	
	FR	58	4.1	
	LA	302	4.22	
	SM	139	4.42	
	Total	1236	4.32	
*** Faculty are interested in the academic development of students.	BU	155	4.25	F (5,1230) = 4.25 p = .001
	ED	509	4.44	
	FA	73	4.41	
	FR	58	4.16	
	LA	302	4.29	
	SM	139	4.45	
	Total	1236	4.37	
*** Faculty are interested in the professional, and career development of students.	BU	155	4.28	F (5, 1230) = 4.44 p = .001
	ED	509	4.44	
	FA	73	4.27	
	FR	58	4.14	
	LA	302	4.24	
	SM	139	4.44	
	Total	1236	4.35	
** Faculty introduce students to a broad range of ideas, perspectives and worldviews.	BU	155	4.25	F (5, 1230) = 3.07 p = .009
	ED	509	4.41	
	FA	73	4.22	
	FR	58	4.22	
	LA	302	4.25	
	SM	139	4.42	
	Total	1236	4.33	
*** Faculty respond to undergraduate students regarding their needs, concerns, and suggestions.	BU	155	4.15	F (5, 1230) = 6.22 p = .000
	ED	509	4.38	
	FA	73	4.29	
	FR	58	3.93	
	LA	302	4.19	
	SM	139	4.42	
	Total	1236	4.28	



Stephen F. Austin State University Senior Exit Survey Report

AY 2014 (Fall 2013 – Summer 2014)

(Strongly Agree – Strongly Disagree 5-1)	College	N	Mean	F Ratio and Sig
** Students are encouraged to become acquainted with the department's faculty.	BU	155	4.1	F (5, 1230) = 3.60 p = .003
	ED	509	4.3	
	FA	73	4.25	
	FR	58	4.07	
	LA	302	4.14	
	SM	139	4.39	
	Total	1236	4.23	
** Students are encouraged to participate in professional clubs and organizations.	BU	155	4.15	F (5, 1230) =3.3 P = .006
	ED	509	4.3	
	FA	73	4.05	
	FR	58	4.12	
	LA	302	4.13	
	SM	139	4.36	
	Total	1236	4.22	
*** Students are encouraged to attend professional seminars and presentations.	BU	155	4.14	F (5, 1230) = 5.88 p = .000
	ED	509	4.35	
	FA	73	4.36	
	FR	58	4.1	
	LA	302	4.07	
	SM	139	4.34	
	Total	1236	4.24	
*** Students are encouraged to become familiar with current and emerging technology.	BU	155	4.01	F (5, 1230) = 10.69 P = .000
	ED	509	4.34	
	FA	73	4.15	
	FR	58	4.22	
	LA	302	3.98	
	SM	139	4.42	
	Total	1236	4.2	
*** Students are encouraged to participate in research or creative projects with faculty or other students.	BU	155	3.88	F (5, 1230) = 6.96 p = .000
	ED	509	4.29	
	FA	73	4.07	
	FR	58	4	
	LA	302	4.08	
	SM	139	4.26	
	Total	1236	4.16	
** I found my major to be characterized by mutual respect between undergraduate majors and professors.	BU	155	4.31	F (5, 1230) = 3.94 p = .002
	ED	509	4.41	
	FA	73	4.3	
	FR	58	4.05	
	LA	302	4.24	
	SM	139	4.43	
	Total	1236	4.34	
* I found my major academically stimulating.	BU	155	4.32	F (5, 1230) = 2.64 p = .022
	ED	509	4.47	
	FA	73	4.44	
	FR	58	4.33	
	LA	302	4.34	
	SM	139	4.53	
	Total	1236	4.42	

Table 11



Stephen F. Austin State University Senior Exit Survey Report

AY 2014 (Fall 2013 – Summer 2014)

Question 6. Students' Participation in the Programs (Table 13):

Please indicate your participation in the programs given below (check all that applies):

	BU (N = 155)		ED (N = 509)		FA (N = 73)		FR (N = 58)		LA (N = 302)		SM (N = 139)	
<u>Programs:</u>	Head Count	Percent	Head Count	Percent	Head Count	Percent	Head Count	Percent	Head Count	Percent	Head Count	Percent
Service learning project	13	8.4%	128	25.1%	7	9.6%	9	15.5%	49	16.2%	25	18.0%
Paid internship(s)	24	15.5%	31	6.1%	8	11.0%	13	22.4%	30	9.9%	14	10.1%
Non-paid internship(s)	12	7.7%	204	40.1%	14	19.2%	6	10.3%	86	28.5%	9	6.5%
Course credit internship(s)	21	13.5%	198	38.9%	22	30.1%	8	13.8%	92	30.5%	11	7.9%
Non- course credit internship(s)	14	9.0%	7	1.4%	6	8.2%	2	3.4%	18	6.0%	3	2.2%
SFA faculty research project	16	10.3%	29	5.7%	2	2.7%	8	13.8%	34	11.3%	22	15.8%
Non-SFA faculty research project	6	3.9%	23	4.5%	1	1.4%	7	12.1%	13	4.3%	10	7.2%
A collaborative learning project	29	18.7%	95	18.7%	8	11.0%	4	6.9%	34	11.3%	21	15.1%
None	86	55.5%	179	35.2%	41	56.2%	28	48.3%	109	36.1%	72	51.8%

Table 13



Stephen F. Austin State University Senior Exit Survey Report

AY 2014 (Fall 2013 – Summer 2014)

Question 7. Students' Self-evaluation in Progress of the Following Areas (Table 14):

As a result of studying at SFA, how much progress do you feel you have made in the following areas?

	College	N	Mean	F Ratio and Sig
*Critical Thinking Skills - creative thinking, innovation, inquiry, analysis, evaluation, and synthesis of information	BU	155	4.08	F (5, 1230) = 2.95 p = .012
	ED	509	4.28	
	FA	73	4.16	
	FR	58	3.98	
	LA	302	4.12	
	SM	139	4.29	
	Total	1236	4.19	
**Communication Skills - effective development, interpretation, and expression of ideas through written, oral and visual communication	BU	155	4.11	F (5, 1230) = 3.25 p = .006
	ED	509	4.36	
	FA	73	4.22	
	FR	58	4.17	
	LA	302	4.18	
	SM	139	4.27	
	Total	1236	4.26	
***Empirical and Quantitative Skills - the manipulation and analysis of numerical data or observable facts in informed conclusions	BU	155	4.03	F (5, 1230) = 7.75 p = .000
	ED	509	4.06	
	FA	73	3.51	
	FR	58	4.00	
	LA	302	3.77	
	SM	139	4.16	
	Total	1236	3.96	
*Teamwork - the ability to consider different points of view and to work effectively with others to support a shared purpose or goal	BU	155	4.26	F (5, 1230) = 2.9 p = .013
	ED	509	4.33	
	FA	73	4.18	
	FR	58	4.07	
	LA	302	4.11	
	SM	139	4.25	
	Total	1236	4.24	
*Personal Responsibility - the ability to connect choices, actions, and consequences to ethical decision-making	BU	155	4.31	F (5, 1230) = 2.72 p = .02
	ED	509	4.44	
	FA	73	4.27	
	FR	58	4.22	
	LA	302	4.25	
	SM	139	4.37	
	Total	1236	4.35	
**Social Responsibility - intercultural competence, knowledge of civic responsibility, and the ability to engage effectively in regional, national, and global communities	BU	155	4.19	F (5, 1230) = 3.31 p = .006
	ED	509	4.33	
	FA	73	4.15	
	FR	58	3.98	
	LA	302	4.13	
	SM	139	4.25	
	Total	1236	4.23	

Table 14



Stephen F. Austin State University Senior Exit Survey Report

AY 2014 (Fall 2013 – Summer 2014)

II. Open-end Question (Contains original text data that students put in)

What were the three most important reasons for staying at SFA

Athletics/Greek Life	Academics	Transfer Issues	Others
<ul style="list-style-type: none"> •cheer •Football team •sports (softball) •SFA Cheer •Dance team •Athletics •Football •baseball •Basketball program •cheerleading •Softball •Athletic program •Softball •Cheerleading •Football •Athletic program 	<ul style="list-style-type: none"> •My major's professors. •Dewitt School of Nursing! •Amazing nursing school! •My Major •great professors •Faculty •NURSING PROGRAM •Environmental Science program •Helpfullness of professors •Online Completer Program •on-line education program •Online courses •online program •Nursing School •Online program •Nursing Program 	<ul style="list-style-type: none"> •credits wouldn't transfer •Too many credits to transfer out •Credits don't transfer well •could nt transfer due to low gpa •too late to transfer out •Most of my hours were here •Had to due to previous credits •It was too late to transferr •not a lot of my credits would transfer to another school. •Didn't want to deal with the process of transferring •Didn't have the right classes for transferring to A&M •Did not want to transfer and lose credits •beacuse the classes here do not transfer anywhere else •So I would not have to start over as a freshman at any other college •It's the place I stated and I couldn't transfer hours •Because credits do not transfer accordingly. Therefore, I was trapped here. 	<ul style="list-style-type: none"> •there are not three reasons stay close to home My parents forced me to My boyfriend came here Job To get away •Girlfriend •beauty of campus •getting a army scholarship •Fiance •I got my BA degree there. •School Spirit •Jack Attack •the forest and trees •Already here •The environement



Stephen F. Austin State University Senior Exit Survey Report

AY 2014 (Fall 2013 – Summer 2014)

What were the three most important reasons for staying at SFA

Athletics/Greek Life	Academics	Transfer Issues	Others
<ul style="list-style-type: none"> •football •SFA Dance Teams •Cheerleading Program •sports •Athletics •Playing golf •To run on the cross country and track teams •Football •Sports (Baseball) •SFA Dance Teams •Football •Athletics •Sorority •Sorority •Tri Delta •Sigma Chi Fraternity •greek life 	<ul style="list-style-type: none"> •Online classes •Online Classes •online program •Teacher Program •Online classes available •Online classes •elementary education program •Online course availability •great professors •Professors •My department •School of Social Work •professors •online education program •NURSING PROGRAM •Great Online Program •Excellent Education Program •on-line program •online classes 	<ul style="list-style-type: none"> •If I had transferred to another university I would have had to start over which would have put me over the 150 hour limit for in-state tuition and Hazelwood. •Before I realized UT Dallas had a better GIS program it was too late to transfer because it would have put me over the 150 hour limit. Also I selected 2 more in this category because I was forced to select items that do not apply. •Forestry and Forestry Alone •Great ag department •professor support •online courses offered •online program •program •distance education •online classes 	<ul style="list-style-type: none"> •on line student •Work •online student •husband •reputation •It was my dream school •Parents are Alumni •Lumberjack Marching Band •Recommended by employee •Opportunities of Leadership •already had credits here •had no other choice •it's cheap....ish •Church community •opportunities •took online classes was not on campus •Could not get in anywhere else •didn't want to drive any further •Was pleased with the overall college



Stephen F. Austin State University Senior Exit Survey Report

AY 2014 (Fall 2013 – Summer 2014)

What were the three most important reasons for staying at SFA

Academics		Others	
•Excellent professors	•Ability to complete degree after 20 years	•St. Mary's Catholic Campus Ministry	•I honestly don't know I should have left when my program was closed this has been ridiculously difficult...and now I am not graduating with honors because I only have 52 hours not 54 because my 6 hours of student teaching doesn't count yet I have a 3.94 GPA.....REALLY!!!!!!!!!!!!!! this is ridiculous...if my advisor did her job and stayed consistent in advising and if the online program was supported fully online with classes I wouldn't have been forced to go to another college to take some of my classes...I hold SFA responsible...support your online programs or lower the hours requirement for graduating with honors...
•online courses	•Online Completer Program	•My parents would not let me go out of state.	
•honors program	•Nursing Program	•Complete degree w/o need to transfer credits	
•I love my professors	•How fantastic the forestry program is	•too late to start anywhere else	
•Could Be Online	•Grades	•My sister was going to school here as well	
•online degree program	•Available program	•available facilities and resources	
•Online classes	•Distance Learning Opportunity	•once I started, I felt obligated to finish so that I have a means to pay back lones	
•online programs	•Online RN-BSN program	•Only stayed on campus/in Nacogdoches for 6 weeks for the program I was in.	
•Great and growing music program	•instructors	•Wanted to complete my degree at one school and there was no need for me to transfer	
•Online Program	•Personable professors	•Closer to my son than the school I started attending in Maine, and more degree options	
•The music/band faculty	•Degree on-line		
•level of the program I wanted to be in	•Degree on-line		



Stephen F. Austin State University Senior Exit Survey Report

AY 2014 (Fall 2013 – Summer 2014)

Please add additional comments about your experience with fellow students

Positive Feedback

- All my peers in my practicum courses became a close knit safety net for all my education issues I may have had.
- Enjoyed working with my fellow classmates
- Arthur Temple College is a world of its own. Hands down the best faculty on campus. Other professors do not really care, but Arthur temple professors are truly passionate about what they do
- In the psychology department all the students are very committed to learning and are very focused on getting into graduate school. All students were very professional and created a great academic environment.
- From my experiences, students tend to form study groups in classes that are harder than others. Everyone that i've known participates fully in group projects. If you need help with something, students are willing to help.
- As nursing majors, we highly adhere to the academic honesty policy. Ultimately your character is what makes you.

- Although my program was through D2L, all of these characteristics are still very evident.
- Deaf Education program is amazing
- For the most part, I had a nice experience working with fellow students. Out of my four years, I can say that I have only had one or two problems with fellow students involving class.
- I enjoyed the interaction with other students. Working with other students helped in areas that were challenging. Working as a team has its' advantages
- I have been blessed to learn along side the best future teachers here at SFA. I have enjoyed the friendships I have made and the support that we give each other. I have made lasting friendships in my program will people that can also be help to me professionally.
- I loved those who I got to interact with in my major. Criminal Justice students are awesome and we have a great sense of family among each other.

- Because of SFA, I have made some life long friends that will be with me the rest of my life.
- everyone was nice
- Even though my degree in philosophy really wont get me anywhere that most would consider a successful career i have no regrets because i chose philosophy because its my passion...
- I enjoyed meeting like-minded people in my major and learning about the paths they were planning to take. It helped me when I was ready to make my own plans.
- The further along in my degree plan I got the more career oriented and dedicated the students were to getting the future they desired. It is a big rough start with them, but that, in my opinion, is because there are so many people who do not know if college is really for them or do not want to be there.
- I had a great experience working with fellow students. Teachers often try to build this bond so that we can act as resources for each other.



Stephen F. Austin State University Senior Exit Survey Report

AY 2014 (Fall 2013 – Summer 2014)

Please add additional comments about your experience with fellow students

Positive Feedback

- Being in the Nursing program is very different from any other majors, we spent 2 years of our lives together, and we had 12 hour clinicals, and clinicals all over the east texas area. These fellow students were like a second family to me and I would not have made it successfully without their encouragement and support.
- Forestry students are the best, most hardworking people I've come across.
- I didn't get to socialize much with other students, but on the few instances I did it was good.
- I had a great experience meeting new people and made alot of friends while at SFA.
- I have felt like I have found some friends for life here at SFA. I really enjoy the visits that are required of the Online Program.
- I have made a lot of friends and future connections!
- friendly
- I have made many friends who are psychology majors and we were able to take the same classes together.it's been a very beneficial experience

- There was a divide between the top students and the average/not so average students in my department. Fortunately, I was considered a top student and was able to fulfill my desire/wants of learning my major. I do not wish to speak for those that wanted just a degree and believed that getting by with just Cs and maybe Bs is fine.
- Good networking and a community of people in the same major to relate to
- I enjoyed everyone I had class with. We were all friends and would help each other out.
- I have made some really great friends throughout the college years.
- I have enjoyed attending SFASU. It is a wonderful school and it has a nice relaxed environment. I would recommend to anyone.
- i love sfa
- I had a great experience at SFA.
- I have never experienced problems with fellow students, most have become great people to work with and take courses with.

- SFA is an amazing college and an all around great place to be. From its' beauty to the amazing people, SFA has it all. I have thoroughly enjoyed every second I have spent here at SFA. I do not want to leave but I know it is time for me to move on. I will miss SFA and Nacogdoches. I cannot wait to come back to visit. AXE 'EM JACKS!!
- Great classmates online who were friendly and knowledgeable
- Everybody is so helpful and nice. They are always happy.
- I have really enjoyed my tenure here at SFA and will deeply miss it.
- I have come to appreciate my fellow psychology students very much, and without some of their help I wouldn't be where I am today.
- I made alot of goo friends that I hope to keep for life!
- I have had overall good experiences.
- I have really enjoyed and learned a lot from my fellow students during online discussion and the face to face sessions.



Stephen F. Austin State University Senior Exit Survey Report

AY 2014 (Fall 2013 – Summer 2014)

Please add additional comments about your experience with fellow students

Positive Feedback

•Students in Cohort 15 in the online education completer program are very supportive of each other and we're excited to see each other each time we meet in campus. I have made lifelong friendships.

•Being in Elementary Education, all the students got to know one another really well. We had a great sense of community and we always helped one another out.

•I mingled with few.

•Me and the student in my major motivated each other

•We have become very close as a co-hort and will continue to be lifelong friends.

•I liked having the same people in my classes as I got into my junior and senior year.

•We all try to help each other because there are not many others who will.

•The Social Work program was such a good experience, it is awesome!

•I was part of the school of forestry do all of my classmates and other students in the forestry building were very respectable.

•I have thoroughly enjoyed my time spent in the elementary education department. I am confident that I have received quality education that will enable me and my cohort to be highly marketable as educators.

•I loved the relationship we built. We hung out and talked about school work and teachers. It was a wonderful experience

•I miss them already.

•If it wasn't for my peers, I wouldn't be graduating.

•The fellow students in my major are like a family! They are my favorite people!

•I love my peers they are supportive and always pushing their fellow lumberjacks to excel

•we are like a family in the art department we all care for each other

•The size of the classes allowed for strong relationships between fellow students.

•Most of those aren't really answerable because some are and some aren't to varying degrees. The few real friends I had were pretty much strongly agree for all.

•overall honesty, but I saw some dishonesty. My major being interdisciplinary, I felt that my classes bounced between the different colleges/buildings, but in a couple of my courses i liked how we students would bond together when there were big classes or group projects.

•I never thought I would bond with peers in the online completer program, but it was a very supportive experience where I made life-long friends.

•They were awesome

•they're hard working and determined to do well in everything

•I transfered here after taking 56hrs. at different college, but if I had it to do over I would have just came to SFA for my whole college career.

•I love the atmosphere of my major. Everyone is closely connected and enjoys networking with one another.

•I have taken most or all of my classes online and the students I have had contact with has been positive.

•I would not have made it through the program without the other students.

•Theatre major students are the best students at SFA to be honest. They're supportive, diligent, and passionate about what they do.



Stephen F. Austin State University Senior Exit Survey Report

AY 2014 (Fall 2013 – Summer 2014)

Please add additional comments about your experience with fellow students

Positive Feedback

<ul style="list-style-type: none"> •I personally didn't care for group work, but I do enjoy collaborating with other students •I was in a cohort. So I made life-long friends. •Loved everyone in the Modern Language Department. Very nice, sociable and helpful. Students were diverse and bright. •It was almost like we were a family. •I was able to gain lifelong friends by creating study groups with fellow students of my major!!!! •My major had a small number of students so it was easy to become friends with them because we were in the same intro class and now graduating together. •loved it •There if you need help 	<ul style="list-style-type: none"> •Nursing students are FAMILY. We look out for each other and it's great to have chosen such a fantastic major. •It was great, we all got to know each other very well. •I wish we would have gotten to know each other better earlier on in school rather than in our final semester here. •overall satisfied •Love the community feel! I have met such amazing people here •the college of forestry and agriculture is a close nit group of students and professors with plenty of one on one time •the diversity of backgrounds is welcoming •My peers in the math department have been great to work with and show wonderful work ethic. •SFA is AWESOME! 	<ul style="list-style-type: none"> •the students in my major are the hardest working on this campus. they're amazing. •Most people did eir share of work on group projects •In my majors classes, there is healthy competition between classmates. Lots of group studying and group efforts to achieve the highest grade possible. •I've meet great friends in the most unfamiliar places. •The Communication Studies department is phenomenal. •The average class size makes it helpful when discussing studying tips, and group work with classmates •loved it •Many students said they hated group work but I thought it was a great way to learn to work well with others. •Students were helpful and had positive attitudes
--	--	---



Stephen F. Austin State University Senior Exit Survey Report

AY 2014 (Fall 2013 – Summer 2014)

Please add additional comments about your experience with fellow students

Positive Feedback

•I started at SFA in 2004, left in 2007 after I thinking I had completed my degree. Due to some unforeseen circumstances, I still had some classes to complete. After working for a couple of years I came back to finish in 2013, which I am super glad I did. I love SFA and have a lot of school pride, so finishing my degree was very important to me. However, given the time, I wish that I had had more opportunity to learn about different programs and degrees when I was attending previously. As an art major, my degree will have little to do with what I see myself doing in the future and is impractical, I think, for most graduates.

•The other special education majors that I am graduating with are all very close, including myself. We were each others support system from most of our sophomore semesters on. Because there are very few on campus special education majors I believe it allowed for a sense of community or even friendship within our small group. We contact each other often now during student teaching.

•My Fellow students are great!! I love the friendliness of the campus



Stephen F. Austin State University Senior Exit Survey Report

AY 2014 (Fall 2013 – Summer 2014)

Please add additional comments about your experience with fellow students

Negative Feedback

- | | | |
|--|---|--|
| <ul style="list-style-type: none">•A certain student didn't earn the grades that were given. This person used fellow future co-workers to get assignments done and was very manipulative when dealing with teachers, | <ul style="list-style-type: none">•In class HMS459 my group member did not want to use the D2L for communicating on our assignment and I did not like that. We had instruction to submit that way. Any way we both made a bad grade. | <ul style="list-style-type: none">•Did not like working with exchange students. Even though they had a different perspective, they would not be open to other ideas besides their own. If they didn't get their way they would just start talking in French to each other, and not contribute any more. |
| <ul style="list-style-type: none">•A student (Faidat) in class went to my dorm and caused a problem, asking other students about me with a CA from Griffith. Knowing that CA can't ask about student records information. That student could have waited for me to get back with her the next day. | <ul style="list-style-type: none">•Communication skills need to be addressed, especially regarding professional communication. Poor grammar, spelling, and an inability to present or elaborate on ideas were reoccurring issues. This is not acceptable for students majoring in education. | <ul style="list-style-type: none">•Forestry Field Station has significant issues with inappropriate student conduct as well as significant drug and alcohol use. Instructors mostly turn a blind eye to the issues and are even defensive that student inappropriate student conduct should be ignored. Most students lack professionalism and work ethic. |
| <ul style="list-style-type: none">•Because all of my courses are online, I experienced very little communication with my fellow students outside of group projects. I would like to have had a greater sense of community with my fellow student. More informal communication with the instructor and as a group could enhance this process as there was often very little communication from my online instructors. A very brief email once a week for a 3-hour course I believe is insufficient interaction by the instructor. | <ul style="list-style-type: none">•During my HMS interior design classes I saw professor Sally Swearingen instigate many student conflicts through student bashing and rumor spreading. I feel if it wasn't for her hurtful words about fellow students that we as a graduating class would get along better in the academic setting. I feel her actions were very unprofessional and caused nothing but the students and the program problems. | <ul style="list-style-type: none">•Some students are motivated but some aren't. You know the ones that are willing to go above and beyond contribute to organizations within their major. The ones that don't just give forth what they have for classes and that is all. I've noticed as well that it's the women population at SFA that attempt to do more work and contributions towards SFA than the male perspective. |
| <ul style="list-style-type: none">•Biology department could use more funds. | <ul style="list-style-type: none">•Group work doesn't often apply to art majors since art is a solo process | <ul style="list-style-type: none">•Group work = terrible portrayal of anything knowledge based, it's amazing imagination survives that type of education |



Stephen F. Austin State University Senior Exit Survey Report

AY 2014 (Fall 2013 – Summer 2014)

Please add additional comments about your experience with fellow students

Negative Feedback

•I feel that while some students are academically driven, others are not. Those that are do the majority of work in group projects.

•The students in the mass communications department do not have a big drive to do anything with their degrees. I believe this in part has to do with the fact that there are no clubs or organizations for this department. Other departments have many clubs/organizations. When I attempted to start a club, I could not get any professor to agree to support the club. They pushed it off saying that the new professor (that they did not hire) could have the responsibility of starting the club.

•The majority of the students I worked with produced quality work; however, there were also some that expected an "A" for little or no effort.

•My classmates in general often had no feedback for others. Most are very shy, and often stuck in their own worlds. Many of them we're one dimensional in their thinking and could care less about learning other skills. The teachers we're great though.

•I didn't interact with my fellow students very much. I found them contemptible and disgusting, not worthy of attention.

•there are several different social circles of students within my major. In their chosen circle of friends, they will work well together. But outside of their respected circles they are unwilling to help and cooperate with other classmates. The learning curve has also tremendously dropped. The program is allowing students who don't know the material and lack the required skill and work ethic to continue on into the advance classes where it hinders the students that are passing and going above and beyond in their work.

•The majority of students in the music department are very ambitious and hard-working, however if you are not a part of their ensemble they tend to be cold towards you.

•I found quite a bit of students within my major to be stuck up and have an "I'm better than everyone" attitude. It was discouraging and though I recognize my major required criticism which I gladly and openly accept, the lack of politeness I witnessed was appalling.

•I felt uncomfortable with my peers in my major. Peers in my minor were totally different, maybe it's the culture difference.

•Group projects were disadvantageous in that the professor wasn't able to gauge individual contributions to group projects. I had a group project where one of three students dropped and that left my partner and I to complete the project. My team member waited until the last minute to deliver a luke-warm component and I was left to fix it as best as I could and my grade reflected the struggle. Group projects are NOT conducive for individual fair evaluations of a student's independent work.

•The Students in my Major tended to form cliques. They are a broad range of ages of students in my major, and they tend to not really mesh as one.

•I am not a fan of group work because although it does prepare us for interaction in the work realm, some group members are extremely lazy and do not carry their weight. Group work should not be involved past the sophomore level.



Stephen F. Austin State University Senior Exit Survey Report

AY 2014 (Fall 2013 – Summer 2014)

Please add additional comments about your experience with fellow students

Negative Feedback

- | | | |
|---|---|--|
| <ul style="list-style-type: none">•Many of these kids are spoiled and it shows in their attitudes•my fellow students at sfa sucked.•The Athletes were treated special compared to the rest of us. We had to work twice as hard, but they barely put in any effort.•Need more professors. My department needs a lot of growth and maturity at SFA•Most of the students in my major are really nice, hard working, honest, etc. but working in groups is really difficult (in any major) because no matter what classes I'm in, if there's a group project I do most of it myself.•For the most part, many fellow students just wanted to do the minimal to get by and graduate. Many had jobs on campus and financial aid but were still unmotivated. | <ul style="list-style-type: none">•Lots of complaining in from radio/television majors. Lack of respect for teachers at times•Math majors take life too seriously•it is so difficult to get other students to participate while working on group projects. thats why teachers should limit group projects•Some students are harsh and competitive and not willing to work well with other students.•Some students are obviously in hospitality because of it's reputation for being a easy degree plan. . . The passion for the career is lacking in a lot of my fellow students and it tends to make the classroom atmosphere a little stiff.•Group work with online students is especially difficult when we've not met face-to-face. This type of activity should be limited for online students. | <ul style="list-style-type: none">•It was difficult to build a relationship or bond with students because we were distance education students.•it sucked•The younger students are apathetic and entitled, while those that have already graduated were much more hardworking.•Some of the students just choose that major because they dont want to do anything else. They just want to coach.•If you exceed your attempted hour amount, regardless of them being transfered from another college, you WILL be charged out of state tuition. There is no "Lee Way" with SFA. |
|---|---|--|



Stephen F. Austin State University Senior Exit Survey Report

AY 2014 (Fall 2013 – Summer 2014)

Please add additional comments about your experience with fellow students

Distance Education	Other	
<ul style="list-style-type: none"> •Because I took most of my courses online, many questions regarding my fellow students are hard to answer. •This was an online program so most of this does not apply. •My experience with SFA has been completely online. •online classes limited experiences 	<ul style="list-style-type: none"> •It's not possible to rate all with one answer provided, everyone is different •The writing profesion is not really a team sport •N/A •n/a 	<ul style="list-style-type: none"> •this is subjective as some people are more inclined to do their work and participate while other students are free riders using other people to skate by. •no com ment •no comment •none
<ul style="list-style-type: none"> •I think it depends on the group of students. During one semester, I had two group projects which is a challenge for online classes. One group was cooperative and helpful, the other was very difficult to motivate and communication was lacking. 	<ul style="list-style-type: none"> •N/A •n/a 	<ul style="list-style-type: none"> •None Available •Na
<ul style="list-style-type: none"> •Being a graduate student who did only online courses, I don't really like I had the opportunity to really interact with my fellow students. 	<ul style="list-style-type: none"> •No Answer 	



Stephen F. Austin State University Senior Exit Survey Report

AY 2014 (Fall 2013 – Summer 2014)

Please add additional comments about your experience with faculty in your major

Positive

<ul style="list-style-type: none"> •All of my history majors have been amazing. •Almost every professor I worked with was amazing! They really care and most are extremely organized in their course presentation. •Amazing History Professors!!! Very knowledgeable •As a music education major, my professors have been incredibly helpful and genuinely care about my education and future. There are not many music students at other schools that can say the same. •Communications department faculty were truly supportive and a pleasure to get to know. 	<ul style="list-style-type: none"> •Estrada cares about his advising students. •The SFA math department made SFA feel like home. Without their encouragement and academic expertise, I would not have had the dedication to "stick it out". •the Student Affairs and Higher Education professors are amazing and so helpful! •I honestly believe that the faculty in my major are the best in the college. They are all so knowledgeable and treat everything equally and like adults. I truly enjoyed my experience with the faculty •The faculty at SFA are like no other college faculty. They really are there for the students. 	<ul style="list-style-type: none"> •Helpful and reliable •The Sociology Department is amazing. I have come to know my professors so well and they have all shown extreme interest in me and my life after SFA. •Faculty were very professional and helped me in areas that were challenging •I really like the faculty because they challenged us but also taught us what we need to know and shared their experiences with us. They were also willing to help us even if they were not our teacher that semester. •I had great teachers! I would not trade them for the world! Dr. Mayer in Mass Com was so excellent! 	<ul style="list-style-type: none"> •Great professors •Dr. Newman, Ms. Ollie, S. Reynolds and P. Gilbert made an impact in my life and encouraged me to be the best in my profession. •Great and Knowledgeable professors and always there for you •The faculty in my major were very concerned about us being successful, they were very supportive and genuinely cared about each and every one of us. They were extremely helpful and were excited about teaching us. •I have been greatly impressed with the faculty of SFA through the D2L graduate program.
---	---	--	---



Stephen F. Austin State University Senior Exit Survey Report

AY 2014 (Fall 2013 – Summer 2014)

Please add additional comments about your experience with faculty in your major

Positive

<ul style="list-style-type: none">•Dean Bullard is an amazing man. Dr. Hans Williams is THE best professor at SFA. I would challenge any professor on campus to the mental capacity of Jeremy Stovall and Matthew McBroom and they would completely out smart any of them. Whether its history of football or bio chem these two guy are the smartest men I've ever met.•Dr. Lumar is amazing.•I have no complaint about any professor at SFA. Every course I took during undergrad had a wonderful instructor from my first semester through my final semester. I specifically enjoyed the elementary education and special education professors.•The faculty in my major were very supportive and were always there for me when I had a question about something and were quick to respond as well.•Our nursing faculty is by far the best around, they have so much passion and truly care about us students	<ul style="list-style-type: none">•The faculty in my major are highly motivated to teach. You can tell they love what they practice and it makes me want to practice Speech Pathology. They all have such an evident passion for changing people's lives and that comes across in the way that they teach our classes. I wouldn't have chosen a different major!•The Kinesiology faculty is the very best!!!•I believe the faculty worked really hard to ensure a sense of being on campus, even though we were participating in online courses. They worked hard to communicate with me, and answer questions when they arose.•The faculty is very knowledgable, smart, and always willing to help. They have student's success and well-being as a priority.•I love all of my music professors! They are all so great at what they do and I'm sad that I won't be in class with them anymore.	<ul style="list-style-type: none">•I enjoyed getting to know the faculty in my major. I wish I had more opportunities to interact with them in face-to-face classes, as many of my major classes were only offered online. I enjoyed learning from them, though, and having the opportunity to talk with them about projects, assignments, concepts, and future aspirations.•The staff I worked with was excellent.•The faculty in my department is the best. If there were one real reason why I stayed in my major, besides the actual academic side, it is because of the amazing faculty the Department of Government (political science) has to offer.•Some of the faculty member on campus go above and beyond to see that there students shine and excel.•The faculty in the Education department was wonderful. The faculty in the Math department was not.	<ul style="list-style-type: none">•Several faculty members were strong standouts for me - Paula Griffin, Sudan Barber, Elizabeth Kelly, Larry Cupit, Dr. Sowards, and Tafari Erwin. I really worked for my grades with these professors and felt they were asking for my best efforts. I appreciate their dedication to my instruction and my future career.•I love being a Psychology major!•Loved both Professor Moon and Dr. Johnston. They are wonderful and SFA should do everything to keep them and develop the French program since it is a hard major to find. It was one of the deciding factors of my coming to SFA•The math faculty is amazing. They made our department feel like a family by showing interest in students inside and outside of the classroom.•I love that my professors provided different perspectives that really helped me to become more open minded.
---	---	---	--



Stephen F. Austin State University Senior Exit Survey Report

AY 2014 (Fall 2013 – Summer 2014)

Please add additional comments about your experience with faculty in your major

Positive

•Dr.Lumar is tough but a great professor

•i love health science

•The faculty is very helpful and understanding.

•The care that the professors have for their students is the reason why I stayed at this school.

•During my 5 years at SFA, I have had the pleasure of having some amazing professor whom I will always brag about however there were some other faculty members who I didn't have a great time with in classes and every class day I wasn't motivated to go to that class. Overall I think the faculty is great though!

•I loved my faculty however, i could tell that they have a lot on their plate due to the overwhelming class sizes. No matter how many students they have in their classes our Professors are willing to help us any way they can. However the health science department NEEDS MORE PROFESSORS! The health science department is going and so should its staff!

•The philosophy department at SFA is amazing, i will never forget them, every aspect of my life has been made better to some degree by them. Specifically Dr. Anne and Owen Smith and Dr. Kelly Salsbery, I was never the best student, but they were always helpful, compassionate and supportive...

•The faculty in my major are great! They don't have to be your advisor nor your professor to give you advice and aid you to the future. They are a great group of staff and I'm more than honored to have met them either by having classes with them or seeing them in the hallway.

•The faculty is very personable and easy to approach.

•I loved my professors, especially during practicum I and II.

•Dr. Rust and Dr. Drenner were the most helpful.

•Dr. O'Dwyer is the main reason I put strongly agree on most of these questions.

•Every professor that i have had has been great. One astronomy professor was very monotoned though.

•I loved all of the faculty, they are so passionate about their work which is encouraging.

•I think the faculty in my major are all great teachers. Some care more about moving on and enhancing life after college than others.

•The faculty want to see their students succeed. They take time to make sure you understand all the material.

•The theatre department faculty are some of the best. They genuinely care about their students and will do everything in their power to help their students succeed.

•Faculty in my major are more than helpful in preparing you to succeed in your career. They are willing to do anything and everything to help you get to where you want to go.

•The professors in the communication dept. made it easy for me to succeed and really care about students. I developed lasting relationships with me professors.

•The faculty in the school of nursing, has been the best set of professors that I have ever had. There is no doubt that they want ALL of their students to succeed.



Stephen F. Austin State University Senior Exit Survey Report

AY 2014 (Fall 2013 – Summer 2014)

Please add additional comments about your experience with faculty in your major

Positive

<ul style="list-style-type: none"> •The instructors are the best I've ever had. 	<ul style="list-style-type: none"> •Neal Cox is a good professor. 	<ul style="list-style-type: none"> •I loved the hands on experiences of my major. 	<ul style="list-style-type: none"> •The Criminal Justice faculty are amazing!!
<ul style="list-style-type: none"> •Great economic professors. They were a large reason for me to stay here at SFA and earn my BBA in Business Economics. 	<ul style="list-style-type: none"> •Kinesiology has the best professors hands down. There hasn't been one that I did not like 	<ul style="list-style-type: none"> •Nursing faculty are very knowledgeable about the nursing profession and provide different projects to enhance the learning experience. 	<ul style="list-style-type: none"> •The faculty really care about your success and willing to help in anyway they can to fully comprehend the material.
<ul style="list-style-type: none"> •They are easy to talk to and very supportive! 	<ul style="list-style-type: none"> •Love the agriculture department! 	<ul style="list-style-type: none"> •They are awesome! 	<ul style="list-style-type: none"> •everyone was an excellet teacher except Dr G
<ul style="list-style-type: none"> •Great professors who were always helpful and friendly 	<ul style="list-style-type: none"> •I enjoyed the versatility of the Criminal Justice faculty 	<ul style="list-style-type: none"> •Great faculty. All were very knowlegeable in their field of specialty and biology in general. 	<ul style="list-style-type: none"> •Faculty was absolutely great in the Human Services Department.
<ul style="list-style-type: none"> •very professiona 	<ul style="list-style-type: none"> •loved them 	<ul style="list-style-type: none"> •I enjoyed all of my major classes alot. 	<ul style="list-style-type: none"> •They were very helpful and nice
<ul style="list-style-type: none"> •Some more so than others, but overall I had wonderful professors who actively participated in our online classes and encouraged professional and personal growth. 	<ul style="list-style-type: none"> •The Elementary Education program was phenomenal. Most professors were outstanding. I could not imagine a better experience than I had going through the Elementary Ed program. 	<ul style="list-style-type: none"> •Nursing instructors will bend over backwards to help you. They want you to be the best nurse that you can be and they will work to the best of their ability to help you be successful. 	<ul style="list-style-type: none"> •the faculty for psychology are very good at teaching and they are willing to help you in class and ask about future plans for you in the future. They are very helpful and I am glad that I got the teachers and psychology major.
<ul style="list-style-type: none"> •I am happy that taking Intro to Psychology was core requirement because I would've never known my true calling: Psychology! 	<ul style="list-style-type: none"> •Michael Munro & Debbie Cady were absolutely the most helpful professors I have had thru my years of college. 	<ul style="list-style-type: none"> •I found that the faculty during practicum two were the best group of professors I have ever had. 	<ul style="list-style-type: none"> •They were always willing to help with connections to other professionals in our field.



Stephen F. Austin State University Senior Exit Survey Report

AY 2014 (Fall 2013 – Summer 2014)

Please add additional comments about your experience with faculty in your major

Positive

•I am very glad I returned to school and persued this major. I am very pleased with the job oppurtunity and variety that is available to me after graduation.

•Dr. Saracino is a professor who you can tell is experienced in her field of study however she seems not to have any people skills. I remember walking through the hallway and telling her hello and she grunted at me! Did not say an actual word but grunted at me. She also does not grade off of her rubrics. However I have been able to make meaningful connections to other faculty members in my major.

•I am a history major and the faculty in my major are hardworking and sincere! They want the best for us. Notable professors are Dr. Sandul, Dr. Carney, and Dr. Sosebee

•Dr. Thompson, the head of the ag-business department, was not only the best professor that SFA has to offer, He was the world's best advisor. He was always in his office during office hours to answer any questions you may have, whether it was class related, or job related it didn't matter he was there to help you. I knew several students that would even go to him about a different class that he didn't even teach and he would still help them out. A+ for Dr. Thompson

•the professor of my major with a knowledgeable about everything that was going on and what classes I need in order to graduate

•The Sociology department is great! I loved working with these professors in particular: Dr. Szafran, Dr. Cecil, & Dr. Segady. My advisor Dr. Darville was very helpful. Peggy Moss is the most amazingly sweet and helpful Admin Assistant on campus. She completely deserves a raise for being such a pleasure to interact with. Dr. Segady is the best professor at SFA, he is the reason I majored in Sociology. His passion for his profession really comes across in his lectures. Dr. Cecil is very entertaining and completely relatable to the students. She has great real life experiences to share and it helps to get the information to really sink in. Dr. Szafran is super nice, I didn't do as well as I would have liked in his courses but overall just a really great professor. I would also like to note that the anthropology department has a great staff and they do an amazing job. Overall my experience with both departments was fantastic! I chose a great major for my temperament I just wish the job opportunities were more plentiful.

•The faculty of this school are very helpful. They go out of their way to make your experience here positive. They offer a lot of support for you to succeed in your classes.



Stephen F. Austin State University Senior Exit Survey Report

AY 2014 (Fall 2013 – Summer 2014)

Please add additional comments about your experience with faculty in your major

Negative

•All of these apply to the staff of the hospitality department, with the exception of Carl Pfaffenberg, who lacked instructional skills, personal and academic development of students, and many other characteristics that other professors were exceeding in. Many hospitality students disagree with the teaching style of Pfaffenberg and have voiced their opinions several years in a row, but nothing has been done. Luckily he is retiring soon. Future students will be much better off.

•As a music education major, these responses only apply to my music professors. I feel that my education professors could have been significantly better in all areas

•Dr Maurer in Ag dept is a bully to students and shouldn't be allowed to teach anyone!

•Faculty has NO KNOWLEDGE of Special Education. We were treated like step children.

•Some are stupid and made me feel ashamed of a degree from here! Hire prestigious people!

•CS/I.T needs to start integrating real-life career assignments. Not everything is uniformed. There's literally thousands of ways to complete a task. Not just one way, in which if you don't do a certain task just exactly the way your instructor wanted it they shouldn't reserve the right to penalize you. If anything they need to praise a student for their outside creative thinking. Instead of learning to be a robot.

•Dr. Jennifer Gumm was the worst professor I've ever taken. Her organizational skills, communication with students, and attention to detail is lackluster at best.

•only one no compassion or off to make up work better within limits

•Faculty in my major was god awful. I would rather burn a slow horrible death than ever sit through a class at sfa ever again.

•Some professors teach more of their beliefs, and are tested on their opinion rather than the book/other materials have stated.

•I feel like my undergraduate major will fall apart after I leave SFA. One of our greatest professors and the man who practically runs the entire program did not get his contract renewed. SFA's Orientation and Mobility department will not survive without Barry Stafford. I am so lucky I am graduating before he leaves. If it was not for him I would have never known about this major and fell in love with it like I have. He is absolutely the best teacher I have had in my ENTIRE life.

•Dr. Morton is the most tight (cheap) person in the ag department, will never buy stuff we need for ag shop. we have to go to Perritt and he gets it.

•I had one psychology professor who did not teach effectively and

•They are not qualified to help advise you about which classes to take or what is required of you by the university.

•There were a couple of professors that did not quite fit the mold as my other instructors regarding getting to know students.



Stephen F. Austin State University Senior Exit Survey Report

AY 2014 (Fall 2013 – Summer 2014)

Please add additional comments about your experience with faculty in your major

Negative

•Some professors have horrible teaching styles that do not help most students. They talk at us like we are just supposed to know instead of actually teaching us.

•I believe the faculty in my major is understaffed and the professors have too much work. Although they have been helpful for the most part, I believe they spend their time putting out fires and some issues get put on the backburner. Also, if they are continually working after hours and on weekends, they aren't getting enough time to relax which may make them less effective because they are stressed all the time.

•Stop hiring actors. Hire teachers

•One professor stunted my results. I don't feel she really cared about the students, she was the living example of "those who can't, teach"

•This response was based on my academic career prior to me becoming a psychology major. The pre-professions was not helpful or encouraging. It was no guidance in the beginning.

•With the exception of Dr. King, most professors in the music department pick favorites and over look others who also work hard and have talent.

•The only faculty member who I feel has continually acted unprofessional while attending SFA was Sally Swearingen. She not only continually caused problems between students but staff members as well. Her actions against students have caused me to personally file a report with HR regarding her behavior towards me. I would highly suggest that her actions in the classroom be evaluated to better enhance the student outcome and classroom setting.

•unorganized

•It's upsetting that most faculty in the communication department don't use D2L technology

•I had a problem with my advisor because, I got in trouble for interup to graduate early and not on time after words and also because I had to stay an extra semester because my teacher didnt calculate my hours correctly.

•When teaching Multicultural competent classes. Professor should focus on all ethnic groups that are oppressed and not just her race and culture.

•I really enjoyed my experiences with the human sciences professors. I wish the professors in the chemistry department were as open as the HMS professors. I understand the lab component is additional work for the chemistry professors, but I feel like they could be more receptive to their students. I always felt rushed or unwanted during office hours when I neede help in several of my chemistry classes.

•Its just job training. Not nearly as academic as I would've liked.

•I found the head of my depatment rude and unfriendly on many occasions, she was routinely unapproachable and uncaring.

•Of course there are exceptions, but as a whole, the faculty at SFA are disinterested in students, and care only about their own meaningless research, vying for a tenured position.



Stephen F. Austin State University Senior Exit Survey Report

AY 2014 (Fall 2013 – Summer 2014)

Please add additional comments about your experience with faculty in your major

Negative

•I did not feel "challenged" enough in my major, I also do not fully feel prepared to go out in the real world and do a job pertaining to my degree.

•The advising within the Department of Government has gained a reputation of not being familiar with other department requirements. Many students have been advised wrong for their intended minors which has caused them to stay extra semesters.

•Teachers were great and made me feel like I could talk to them on a personal level. Only problem I've had with faculty is with advising issues. I was moved from advisor to advisor and have been told three different times "you thought you were on track to graduate but you need more classes". I thought i was finished and then another class would be added. this happened to me three times.

•I have only encountered one teacher in my department that really did not seem to care if the students succeeded or failed, and was not keen on trying to help students.

•The only issue I had with the department faculty was advising, which cost me an extra semester.

•I felt that when I was not doing so great in the BSN program on campus that there was very little support and the professors were definitely not as helpful as they could have been with a few exceptions to a couple of professors. I felt as if I was almost in a sink or swim program.

•The faculty members are great, but I think they should hold their students to a higher standard. Soem tests/ assignments are too easy. This is college.

•In my major (Fashion Merchandsing) few of the faculty have years of experience in the field.

•I had difficulty with mainly one professor; but I had her for 5 classes. She caused me more grief & anguish than I ever thought possible. I was poorly advised & didn't graduate on time. I had been warned by a co-worker of the same problems that caused her to give up a scholarship & transfer to another University. Now I tell others.



Stephen F. Austin State University Senior Exit Survey Report

AY 2014 (Fall 2013 – Summer 2014)

Please add additional comments about your experience with faculty in your major

Negative

•For the majority of my time at SFA certain faculty in my area of study seemed indifferent to my/ other students needs/success, etc. I understand the need for some neutrality, but I felt completely stonewalled when asking pertinent questions about internships, the possibility of changing my study area (the reply was that there was a lack of interest and that the new study area would not be added to the SFA curriculum, shortly after, the area was added as a new major/minor for SFAers, I was only allowed/able to take a course in the study area as an elective) Also, upon beginning at SFA, my transcript was misread, advisor mistakenly thinking I had completed the necessary Algebra. Taking the additional courses necessary to finish the mathematics required cost roughly an additional \$7000 I will be paying back in loans.

•The faculty did not believe in embracing the technology of the profession. For mass communication and journalism, many of the career choices must have a knowledge of the internet, social media, and its place in the mass communication world. Not one professor wanted to teach that. Dr. Mayer taught the Public Relations class and does not believe in technology at all. You cannot teach PR without social media. Social media is PR these days. The mass communications department had no interest in helping us search for a career after college. The Human Sciences Department (my minor) talked about job opportunities all the time. They set up interviews for students constantly. Not once did any of my professors do any work to help mass communications majors prepare for a career. The professors did not seem to care about students, only their books being published. In many of my classes, I got A's because of my knowledge I already had about journalism/PR. Pat Spence is the only teacher who actually taught us. I feel like Bond and Mayer, although they are nice, did not prepare me for the real world or for any part of the journalism field.

•Some professors are condescending. They make you join associations as part of receiving points. Not all students can afford membership fees or dues but for a particular class you had to join in order to amass points. Other professors were very flippant about policies and NO exceptions. Life happens and you extend deadlines accordingly, a student got an F for not submitting her exam due a family situation. Another professor insists on formatting documents a specific way and takes off points for incorrect formats and citing materials with exactitude. Her course is NOT an English course and we are not pursuing a publishing degree. Some of these professors need to be teaching elsewhere because their interests don't align with creating a supportive, inspiring, learning environment. Exams teach us to conform not to expound on our knowledge. The evaluating format is ridiculous in that you have to submit a response by submitting your response on a one page per answer and click three different times that you wish to submit a response-while being timed....this is counter-productive and ridiculous. A timed exam should not lengthen the process to submit an answer, it should expedite it. Lastly, students rarely are able to see what responses were wrong, how are we going to benefit if we don't know where we failed? This program needs serious re-vamping. Oh, and don't call it an on-line program if technical assistance is only available from 9-5; real people work and encounter technical challenges 24/7.



Stephen F. Austin State University Senior Exit Survey Report

AY 2014 (Fall 2013 – Summer 2014)

Please add additional comments about your experience with faculty in your major

Negative

•I had at least one professor each semester that did not meet my academic/professional expectations. As a student, I am required to turn in assignments on time, yet there were no grading deadlines other than the end of the semester. I would have liked to have known how I was progressing throughout the semester. I was an online student and had one professor of whom I had NO clue was a female due to the fact that all the information presented in the course had a man's name and picture in it. The same professor went MIA from the course for WEEKS and used an excuse of a computer crashing. While that is unfortunate, that would not have been a valid excuse for a student.

•while most of the Ag staff are knowledgeable there are a few incidents where I and several of my fellow students were short-changed. Including an incident where a teacher told us she googled her power point slides all the night before class. And most of her information we could easily dispute and prove wrong.

•The faculty force you to learn on your own. This should be a hands on major, instead it's read the book and then google if you don't understand. Had that told to me more than once. Most faculty don't make time to see you, if you have class or work during their office hours, you have to skip to meet with them. Even then, most of the time they will tell you they don't understand how to make it any simpler for you and that you should reread the book or use other sources. Why even pay a teacher if I have to do the work on my own.

•I have been charged for on campus fees and I am fully online.....I am not graduating with honors when I have worked VERY hard and have a 3.94 GPA because I was forced to take a third science with a lab which resulting in me having to take it at a local college...my peers were allowed to take their third science with NO lab allowing them to take a science online at SFA.....with those Science hours at SFA I would have graduated with honors and the worst part is that I found out I wasn't graduating with honors WEEKS before graduation....



Stephen F. Austin State University Senior Exit Survey Report

AY 2014 (Fall 2013 – Summer 2014)

Please add additional comments about your experience with faculty in your major

Inconclusive		General
<ul style="list-style-type: none"> •no comment •None •n/a •forestry faculty were unhelpful. ag faculty were the best •All good ratings refer to general business. all bad ratings refer to management professors except Dr. Cox and Dr. Crocker •Most of the faculty in my major were very kind and respectful as well as caring. However, there is always that one professor that seems to stand out and not be that way. •There are good professors and bad professors, and there are excellent professors. Sometimes the professor chosen makes the difference in how well you do in the class. •I feel like teachers within my major are excellent but the teachers within the Ag department as a whole are not. 	<ul style="list-style-type: none"> •N/a •no comment •I am a graduate student not an undergrad •On-Line Graduate Student- Neutral on undergrad questions •I think it depends on the actual professor. Some were very hands off, while others were very responsive and accommodating. •Most of the faculty within my major are helpful towards post-graduation, but there are some that I personally think could care less. •There are some who try very hard to help you learn and stimulate open minds, while others are obviously in the university not for their students, but for ulterior motives such as research grants. •Some faculty are very accomplished teachers and do care about student success. Others should not be teaching. 	<ul style="list-style-type: none"> •Bioloxy needs more funds for researchb •Health Science field is growing, they need more staff •The survey above is a reflection from my advisor/professor H.S. Cooper •After changing my major several times, geography was the only one that I felt was taught properly. •Biology is definitely a challenging major and people who choose to do so really cannot mess around. •You will always have at least 1 difficult professor each semester. I hope they were there for some life lesson to be learned later. •Forest Wildlife management is a unique major in that it combine an industrial (timber) disipline with an ecological and conservation based disipline (wildlife management and conservation) •Please note this only applies to the History department, other professors i have had outside of the history department were very poor.



Stephen F. Austin State University Senior Exit Survey Report

AY 2014 (Fall 2013 – Summer 2014)

Please add additional comments about your experience with faculty in your major

Inconclusive

<ul style="list-style-type: none">•The instructors for the education department were all very supportive and took great care to make sure their material was stimulating and up to date. However, the Dean of the College of Education was unhelpful and in some cases even rude when asked for help on a particular issue.	<ul style="list-style-type: none">•There are some professors in the accounting department that really try to stimulate creative thinking and encourage students to think for themselves, like Marsh, Noe, Bunn & Ethridge. However, there are other professors that take the easy way out and don't teach, instead they tell stories all day. I use to take lots of pride in our dept, but professors need to understand that by not teaching, they are only hurting the program.	<ul style="list-style-type: none">•While some faculty are knowledgeable and good instructors, others are not. This part of the survey would vary depending on each faculty member, so ranking each survey question is a bit difficult.
<ul style="list-style-type: none">•depends on specific faculty members. some professors in the department of government lack effective communication skills and belittle students. others are great and compensate for the failures of other faculty.	<ul style="list-style-type: none">•Depends on the teacher. Some were awesome and really wanted students to understand and learn. Others made things as difficult as possible and had no problem failing half of the class.	<ul style="list-style-type: none">•The newer proffesor are more understanding then the older ones. and where willing to work with us a lot more.
<ul style="list-style-type: none">•Most of the professors in the theater department are wonderful. Others are not the nicest of people and would not be who I wanted to be representing my university or department.	<ul style="list-style-type: none">•This section of the survey is hard to judge because there are only four professors for my major. Two of them were perfect and the other two were the worst professors I have ever had.	<ul style="list-style-type: none">•Some faculty members seem to be dead set in their ways and feel as though they are right at all times and can come off a bit harsh and rude in communications, but overall it is a great group of colleuges.
<ul style="list-style-type: none">•Most of the teachers are really encouraging and help you out if you go to their office or ask questions. Others take forever to post grades or give feedback on work which makes it hard to improve throughout the semester.	<ul style="list-style-type: none">•Overall, I have good experiences wioth professors. however, as a non-traditional student I have had some issues with faculty allowing for my medical issues despite utilizing disability services.	



Stephen F. Austin State University Senior Exit Survey Report

AY 2014 (Fall 2013 – Summer 2014)

Please add additional comments about your experience with faculty in your major

Inconclusive

•Some instructors were effective at online teaching and others seemed to be learning the process. Because the classes are all online, interaction with the students at least informally once a week is beneficial in tracking progress. One of the things that could be improved in all of the online nursing classes are objectives that are meaningful and relevant to the class. Teaching and testing to those objectives should be the expectation. Although the book often comes with objectives, test questions, and supplements, the professor is still ultimately in control of the content and learning track for the class. This would also address that all of the book supplements oversimplified the material and were essentially time wasters, distracting focus from important material when there was often little time to spare with studying. To give an analogy, I most often felt I was on a ship without a captain floating without direction at sea. There needs to be a goal and a direction. Some instructors did these things well however, there were some who left the instruction to the modules and the book providing only useless objectives as supplement. Finally, I again recognize that some processes are new however, it is important for online students that online instructors be familiar with the online learning system and its limitations and know where the resources are for said system.

•Within my major, I found that several professors played favorites while others were very neutral and fair. What I liked most was that most professors encouraged me to speak up about my thoughts on readings. However, some professors lacked professionalism and a set boundary between student and friend. Before graduating, I sent my thesis to my professor to be edited and had not heard from them for a month. I sent the final edits that I made inquiring their opinion. Without any feedback, it was sent to the chair and signed for to be sent to the dean. I should not complain because I received A's, but the way I was treated was very unfairly as I did nothing wrong. All of my professors made class interesting, though. There wasn't a single class I dreaded. Mostly, I was just appalled by the lack of professionalism I witnessed between professors and other students, and sometimes, between professors and myself.



Stephen F. Austin State University Senior Exit Survey Report

AY 2014 (Fall 2013 – Summer 2014)

Please add additional comments about SFA services

General

<ul style="list-style-type: none"> •The past two years has been great at SFA. My only regret is that I live too far from campus to use any of the amenities. Overall SFA has been a great experience. •Great school in a great town. Needs a few improvements but what school doesn't? I am a proud Lumberjack! •SFA (STUPID FUCKING ASSHOLES) •You guys are AWESOME! •You guys did good wurrk •Wonderful job •Very Helpful •very helpful •TOO MANY QUESTIONS •SFA services are very helpful! •SFA services were helpful •SFA services were very helpful. •I have been thrilled with my SFA experience. •Overall experience at SFA I give it a B- •the school was great i am going to miss it 	<ul style="list-style-type: none"> •Very useful services and all of the staff I encountered during my time at SFA were very helpful. David, in particular, always made time if I requested him, even when he had a busy schedule. •Would NOT attend here again, would not recommend to friends. SFA is lacking to meet my standards in many locations. •Axe 'em! •None at this time •I love SFA •enjoyed the experience at SFA •fix them •Great School •i love their services •It's been a pleasure! •Loved my time here. •SFA has great service with a smile. •I love this school and am sad to leave. •I liked SFA, but i have been unhappy with a lot about it. •Used them for a presentation and they were great. 	<ul style="list-style-type: none"> •My general feeling about services available on campus is that the university cares more about their money than they care about the students •I have not been through any of these services but i'm sure that they are wonderful just as the experience I have had. •N/A •n/a •N/A •n/a •Na •no comment •No comment •Too much bureaucracy. •I was really helped •informative, helpful •Overall I wouldn't change my experience with the services here •I enjoyed my educational experience at SFA. •Most of the services are beneficial to my everyday life
--	--	---



Stephen F. Austin State University Senior Exit Survey Report

AY 2014 (Fall 2013 – Summer 2014)

Please add additional comments about SFA services

General

•Being a student who came to this school without any friends, professors did not mention or push me to join any groups or organizations. I came in this alone and am leaving alone. All I enjoyed was what I learned. I wish I could have been more involved than receiving ugly looks from people when I asked about what an organization was. I wanted to be apart of a group but coming to SFA after already attending a two year college didn't really give me a head start. Some of the Sororities such as tri-delt and tkos need a little bit of attitude adjustments. I have never seen Greek organizations act in a manner that these two did the two years I have been here.. Staff at SFA was amazing. I loved working with the staff in the development office and the rest of the staff I met. I think there are some profesors that do push and make organizations a success but I think more professors should be encouraged to get students into organizations so students like me, who came here not knowing anybody, can be a part of something.

•I have not utilized these areas very much, but I do plan to utilize them a little more in this semester.
•I was enrolled in the Tyler Cohort so I did not get to use many of these services.
•I can't say enough about SFA and the educational experience I have had here. I have been impressed with their competency and excellence from the admissions to the professors. Definitely, an elite group!! Thrilled to be a Lumberjack!!!
•The campus has great customer service and I am proud to have been part of excellence.

•I have always had great experiences with the SFA services that i have used.
•I was an online student so I did not use many of the services provided for on campus students.
•Overall I have enjoyed every moment while attending this school. There is an atmosphere of success that the faculty and staff have developed to give students all of the support they need to graduate from this university.
•SFA services provide the best quality and take the time to listen to the student.



Stephen F. Austin State University Senior Exit Survey Report

AY 2014 (Fall 2013 – Summer 2014)

Please add additional comments about SFA services

Advising		Financial Aid/Tuition	
<ul style="list-style-type: none">•Ms. Beavers in the biology office is the best advising assistant I have ever worked with. She is awesome and personal and really cares!	<ul style="list-style-type: none">•As an online only student, I felt like a second-class student who paid for services used only by on campus students. I don't mind paying for things I use, but I don't appreciate having to pay for things I don't use.	<ul style="list-style-type: none">•Mrs. Michelle Williams has been the best advisory anyone could ask for. She is a wonderful and very helpful person.	<ul style="list-style-type: none">•It was a nightmare dealing with Higher One... The financial aid system was better when SFA took care of it on their own.
<ul style="list-style-type: none">•My academic adviser, Julie Stadler, misinformed me more than once on classes I needed to take or when they would be available, almost resulting to me graduating late.	<ul style="list-style-type: none">•Out of all of my years advised, I have never once had the same advisor twice. I was advised wrong a few too many times and it was very annoying and disappointing for me.	<ul style="list-style-type: none">•My experience with this office is with my step-daughter, not myself. They have lost paperwork that she has submitted. She has encountered rude staff who will not let her speak to her counselor. She has been given wrong information on more than one occasion. Her financial aid was delayed due to missing paperwork requiring an emergency loan and additional fees. The financial aid office should be open until 5:00 if they require payment by 5:00. Closing the office on a day when 5:00 is the deadline almost caused her to be dropped from her classes. The staff she and I have encountered on her behalf has been quite rude.	<ul style="list-style-type: none">•The policy regarding tuition increase for students with excess hours MUST be reexamined. It is absolutely ridiculous that my tuition was that much just because I had excess hours!! Also, this policy should not have applied to me because I started school before this policy was made.
<ul style="list-style-type: none">•I was somewhat displeased with Academic Advising because several times I was told that I needed to add classes that I should have taken when i first arrived at SFA, but I was left to take these classes in my sophomore semester. I just wish there was better Academic Advising upfront.	<ul style="list-style-type: none">•I saw 7 advisors in my time with SFA before we got a dedicated advisor who was wonderful, I did feel that this was very unhelpful in obtaining my degree and found that it set me back by taking several classes I did not need to take and not having reliable information about my degree plan.		<ul style="list-style-type: none">•This semester I was charged excessive tuition. I was told by the business office that all I needed to do was send a letter from my advisor with my appeal to not be charged excessive tuition rates. However, my appeal was denied ! I am now in an extreme circumstance financially because of being lied to on what I needed to do so as not to be charged excessive tuition. This has caused emotional stress and suffering in to my family.



Stephen F. Austin State University Senior Exit Survey Report

AY 2014 (Fall 2013 – Summer 2014)

Please add additional comments about SFA services

Advising

•My advisor changed 3 times during my 18 months at SFA, and with each advisor I received a different graduation plan. With the last advisor, I have received 3 different plans and I am praying this last one is correct. The financial aid department is also no help. I was given grants and even after explaining to the FA department multiple times speaking with multiple workers they were still unclear about how FA systems worked and I was given money that was later taken away on three different occasions. Then there is the Graduation specialist, this is a person who has told me three times I have called her to check my graduation information online. With all the "mistakes" that are made at this school, especially in my regards it is important for me to hear it from more than one person. I could go on all day about the horrible experience I have had with the SFA, but I won't; the registrar office did fine.

•I saw 4 different counselors and the last one was by far the worst. The counselor couldn't care less about my progress. I found little if any support or guidance in this department and I would NOT recommend this track to anyone. I have had a bitter-sweet experience. A handful of professors made all the difference in the world but it seems like the support staff view you as a number and shuffle you around from person to person. It is ultimately a collective effort and unfortunately, my grades reflect my own efforts. I sought help from the beginning but I quickly learned to succumb to indifference and I just want this experience behind me.



Stephen F. Austin State University Senior Exit Survey Report

AY 2014 (Fall 2013 – Summer 2014)

Please add additional comments about SFA services

Financial Aid/Tuition

•Financial aid needs financial aid counselors who actually care about getting students their money. Every semester, I had to fight with financial aid to get the money to attend school here. I know they are holding money from us because I called this semester asking them if there was any way I could get any more money because I could not afford college. All of a sudden, they had an additional \$500 in a grant for me. I did not have to apply or anything. That means they have the money but will not use it. Why? I wish I knew. Career services is a joke. Unfortunately, they do not help you at all prepare for jobs. They do not have any actual job postings, and the career fairs do not have very good options in them. Unless you are a teacher or an accounting major, you are sadly out of luck. I feel like SFA has so much potential, but no one cares to try to get this school up to par. If you didn't want to go greek, there were no options available for clubs or organizations.

•Within my major, I was very satisfied with my experience at SFA. But as a whole, I felt like I was overpaying for the entire campus experience. Each year I was enrolled, it seemed as if there were more and more ignorant people around campus. This is very discouraging from a students standpoint who has worked very hard, has a 3.5 throughout graduate school and already has a job lined up at a CPA firm. In my opinion, the school needs to stricken the admission requirements and to also do a better job on parking. The parking garage on Wilson should go back to 3 floors for computer students and the short term paid parking lot is a joke because it is only there for the school to get extra money from students.



Stephen F. Austin State University Senior Exit Survey Report

AY 2014 (Fall 2013 – Summer 2014)

Please add additional comments about SFA services

Advising

•The Counseling Center saved my life.

•Needs to be more information and direction for graduation, also advising every semester should be made simpler. NO MORE HOLDS

•There needs to be better advising. Many students graduate late or take the wrong classes because of this. HUGE issue. Also helping those students not in education or nursing transition from undergraduate school into a career path would be nice. You give us an education but after but don't teach us anything about what to do or expect after college.



Stephen F. Austin State University Senior Exit Survey Report

AY 2014 (Fall 2013 – Summer 2014)

Please add additional comments about SFA services

Parking / fees

<ul style="list-style-type: none"> •Parking is a disaster •I love SFA but the parking situation is horrible!! •There is not enough parking for students. The ECRC is ridiculous. Staff get have the parking lot when they only take up 1/4 of it... •As a commuter I wish there were more places around campus for commuters to park, also there just does not seem to be enough parking for the number of commuting students. •The parking is terrible when the staff has half of the parking lot but only fills up 5 spots and the tickets are terrible. I have never been given a ticket for parking backwards that is ridiculous. You'd think that y'all had enough of the students money but guess not. •I believe there should be more parking for commuters ONLY a lot closer to campus. I hated having to drive 50 minutes one way to school and then have to struggle to find decent parking. The shuttle service was ok at best, but it was better when it was just one stop instead of 6. 	<ul style="list-style-type: none"> •Parking is absolutely horrible! •Parking availability is very rare on-campus. •over all this school provide good services. Although the parking situation is not the best. •As an off campus student I absolutely despised the parking situations on campus. There are not enough places available closer to buildings. •The parking garages are wonderful, but students rarely get to use them bc faculty use them and we are left with the commuter lots while the entire faculty parking lot is vacant! It's so frustrating!! •Parking sucks for those who have to commute! The campus is not geared toward nursing majors in any sort whether it be cafeteria, residence halls, parking or the library 	<ul style="list-style-type: none"> •Parking prices and entire situation is horrible. •parking needs to be better but im pretty sure you already know that •there needs to be more student parking •Parking is a nightmare and the campus police go out of their way to collect MORE money from students by handing out parking tickets. Not a fan in the least. •The majority of SFA services were extraordinary. However, parking is a huge issue! There are too many students and not enough parking! •As an online completer, I did not use many of SFA's services. However, when coming into town for quarterly meet-ups, parking was difficult and could be pricey. Parking around the on-campus research center/elementary school was extremely limited.
--	--	--



Stephen F. Austin State University Senior Exit Survey Report

AY 2014 (Fall 2013 – Summer 2014)

Please add additional comments about SFA services

Parking / fees

•Parking is a joke. The fines are ridiculous. Faculty staff might as well be the only people allowed to park near a building on campus. When looking for a parking spot as a commuter, or even when I was a student, I would pass dozens of available spots but I couldn't park there because they were faculty staff. I appreciate the faculty staff and believe they deserve good parking, but why can't students park behind hall 16? I know parking has and most likely will always be an issue, but the faculty to student ratio is not proportional to parking. I know forking fines are just another way for SFA to get students money and to enforce the parking rules, but at the end of the day, the students are not happy. Lucky for me, I figured out a way to beat the system for the last 2 years. I'll keep that as a secret to pass on to other deserving students

•Students should be allowed three free parkings per semester, for occasions like when they are sick, or have to carry a lot. The only times I received citations was for these reasons. I don't understand why the parking regulations have to be so unforgiving.

•Parking services is awful for students. I always leave a minimum of 30 minutes from home when I live 3 miles away from campus and still have trouble finding spots. Even when I park at the commuter lot and I'm their early the jack track is terrible. I preferred the old commuter bus because at least I knew I could get to class on time. It's ridiculous that I have to wait sometimes 15min in the rain with no umbrella for two bus that are not in a synchronized schedule. Not to mention that getting to class has taken longer due to frequent stops. I'm also very displeased that that students have to share garages with faculty because every time I'm on campus their seems to be plenty of faculty spaces available while students are suffering everyday with what they have. Not to mention the fact that if you want to use a spot that is by the Wilson Garage and the Landing you have to pay! That is absurd that students not only have to pay more for parking but to park on spots by a garage you have to pay extra is ridiculous. I know it generates income for the school but the students do that already and trying to squeeze every penny from that is just wrong.

•My only issue with parking is that it was oftentimes hard to find places to park in the garages -- the bus system took a good amount of time, making it necessary to arrive at school earlier than was needed. Also, as I am graduating in December, I am pretty bummed about the fact that parking permits are offered only on a year basis. I bought the pass -- which is overpriced, in my opinion -- and am only using it for half a year. I wish there was an option to buy a pass for a semester, so we wouldn't have to pay more than was necessary.

•Something really needs to be done about commuter parking. Don't allow anyone to park in the all access parking places. It is annoying when the residents, who have a 2 minute walk to class from their dorms, park in the garage in spots that should be for commuters who stress about getting to class on time due to lack of parking.

•While there is a shuttle to and from the commuter lot, I have found it to be a hassle to find parking at times. i honestly feel like the garages should be for commuters. Residents have less need to walk back and forth to their vehicles than those of us who live off campus.



Stephen F. Austin State University Senior Exit Survey Report

AY 2014 (Fall 2013 – Summer 2014)

Please add additional comments about SFA services

Parking / fees

- As a commuter student I found parking to be very difficult. I had an issue with not being able to find a parking spot and I had a parking pass for the day. When I parked in a lot that was empty since the lot for commuters was full, I received a ticket. I appealed the ticket but lost. I felt this was an opportunity for SFA to make money not a service to students.
- The parking at this university is one of the worst I have ever seen. There are way too many parking spots for residents and faculty and not enough for commuters. Most residents walk to class, so they do not need that many parking spots. The commuter parking lot should not be only place to find a parking spot. Also the price for parking in the garage next to the student center is outrageous. \$400 per semester is way too much. My friends at other universities do not even pay that much in a whole year let alone a semester.
- If it weren't for the ridiculous parking for commuters than I probably would've had a better experience. Not only do commuters drive hours to get to the campus, we also have to walk an extra 15 or 20 minutes to get to class. The shuttles are ineffective and unreliable when it comes to being on time for class.
- The only thing I have to complain about is the commuter parking. The permit costs \$100 and the nearest parking available for me is in the pecan park parking lot or the CVS parking lot. There are absolutely no parking spaces available for commuters in the parking garages or on campus. More emphasis should be placed on commuter parking availability because we spend too much money on a permit that does not give us any kind of advantage.



Stephen F. Austin State University Senior Exit Survey Report

AY 2014 (Fall 2013 – Summer 2014)

Please add additional comments about SFA services

Assorted

<ul style="list-style-type: none">•a full menu posted outside the cafeteria of the food they have that day would help students chose where they want to eat•the ag department seems to be getting the short end of the stick. every other department like forestry, and business has nice desks, nice equipment etc. the ag department and ag shop has desks from the 50's and arent hardly big enough to write on.•Addign the additonal fees on for recreation use for online students is out ragious and the parking for commuters is HORRIBLE... residents park in commuter parking and leave commuters with no parking!•Better parking, lower off campus living requirements to help stimulate local economy, require profs in upper level classes to have more real world experience.•I found the university never considered forestry or environmental science in their career services.	<ul style="list-style-type: none">•The student teaching placement department was a joke. They either need new people or more/better help.•The dining services are bad, not just the cafeteria. The hours for other services are at times, very inconvenient. There's too much staff and faculty parking that's barely used and not enough for students. Professors were at times pushy about their beliefs.•The Faculty at Arthur Temple College of Forestry and Agriculture are awesome and they make you feel at home if you work heard in your classes and respect them.•I should have utilized Career Services more. I did not realize what they REALLY offered. The posters do not do them justice.•Great school of nursing experience and program! I would highly recommend this program for future students.	<ul style="list-style-type: none">•I felt the Educational Leadership program was very effective and my professors were very knowledgeable. I'm very content with the knowledge that I acquired.•Housing really needs to be improved. I lived and Todd and couldn't wait to get out. I was pleased with the vegetarian options in the cafeterias though! Needs to be more commuter parking ON CAMPUS. Update the science building, too. It is just so old.•Although SFA does a great job planning career fairs for Teachers, Nurses, and Business majors, I was not able to attend a career fair aimed towards the sciences, i.e. Biology majors.•Career Services was overall good, but unable to help me find a job yet. I am optimistic! My dept has offered me no help whatsoever.•The BEST School of NURSING EVER. Very proud to be a lumberjack nurse!
--	---	--



Stephen F. Austin State University Senior Exit Survey Report

AY 2014 (Fall 2013 – Summer 2014)

Please add additional comments about SFA services

Assorted

- | | | |
|--|---|---|
| <ul style="list-style-type: none">•ALWAYS loud ass black girls in the library make an annoying trip or study session. Only black females are the loud ones. Cafeteria and the library is where these problems originate.•The educational department is excellent in helping those students in the online program.•online tech support is great foe online students.•Financial Aid was awful. Business Office was awful. I only enjoyed interacting with faculty members from the history department.•I despise the management of SFA and do not recommend anyone attend unless they are a nursing, forestry, or teaching major. I have discussed multiple issues with many individuals in regards to the management of SFA. In my four years of attendance, I have not seen even one of those issues resolved. | <ul style="list-style-type: none">•The food was terrible, the servers were rude, the parking was a joke, too many employee parking vs no were near enough student parking. In all SFA services need a desperate overhaul.•SFA needs to reach out to better companies for the career fair.•Career fairs didn't incorporate every major•The career services provided by the ATCOFA are much more useful to their respective students compared to the services provided elsewhere on campus.•I felt i was fooled into staying here, the staff does not help at all, the advisors are the reason I did not graduate a year ago, and when i sent an appeaql for my out of state touition I was wasting my time. I got a job through my own efforts no help for anybody. my only regrat is my degree will have the logo of SFASU on it. | <ul style="list-style-type: none">•I could probably consider Dr. Darville, my academic advisor, my best friend throughout my time at SFA. He, as well as Bobby Williams in the business office, both went out of their way for me many, many times.•Not enough parking. The doctors office on campus is joke.•More career fairs for healthcare majors please!•Housing Department sucks - they're rude and not compliant and give exceptions to some students and are very harsh with other students.•Give students their Cap and Gown for free, and eliminate the graduation audit fee, all the information is already readily available. After tens of thousand of dollars, SFA could quite nickel and quartering students. Also give the Computer Science Department actually decent computers, just makes sense. |
|--|---|---|



Stephen F. Austin State University Senior Exit Survey Report

AY 2014 (Fall 2013 – Summer 2014)

Please add additional comments about SFA services

Assorted

- | | | |
|---|---|---|
| <ul style="list-style-type: none">•I love the Rusche College of Business; student activities could improve on level of fun! Other schools have huge outcomes for events they lead, and i feel that there are too many old ways in the town of Nacogdoches holding the potential of SFA back.•I should be able to have any refunds deposited back into my bank account from which it was withdrawn. I do not want a university credit card. This is inconvenient. Otherwise an overall positive experience.•Takes forever to schedule an appointment.•I used the career services for resume and cover letter critiques. Some of their suggestions were not consistent with what I learned in the course.•Your eBill online updates slowly and should not spit transations during charges. It confuses the payment process. | <ul style="list-style-type: none">•I feel that if you complete all of your coursework in SummerI, you shouldnt have to wait until August to get your degree conferred. Some people have jobs waiting on conferred degrees. making them wait until August could cause them to miss out on that job.•The only good thin gabout SFA is the College of Forestry. The rest of it is full of left wing communist propogandists. Can't wait to get out of this damned country.•Love the career services! They are such a huge help!•very disappointed in complaint procedures. I waited months for a response from thr Provost.•Would prefer talking to people instead of having to email them all the time. | <ul style="list-style-type: none">•It was alright, nothing to jump up and down about, but alright. I would have liked more opportunities for Scholarships and for the Culinary classes to have a more open and readily available schedule of their dining services so that I could have participated in that.•library needs later hours & more agricultueal books on animals, better comuter parking at front of campous near north street, career fairs shoul include more animal and ag related jobs (ie. veterinary field, tysons, etc...)•There needs to be more parking on campus. The library should be open 24 hours a day.•the staffing for the various eateries were well mannered and respectful•It would be nice if the library were open for later hours. Midnight is too early for me! |
|---|---|---|



Stephen F. Austin State University Senior Exit Survey Report

AY 2014 (Fall 2013 – Summer 2014)

Please add additional comments about SFA services

Assorted

•I believe as a mature student (over the average college entry age) that the available services and opportunities were never explained to me! I was unaware that I could enroll in "the Honor's Program"; join a serority, or participate in so many of the other services and activities available at SFA. Need to establish a better notification program for those students who are not "fresh out of high school."

•I am a non-traditional student and had difficulty at times finding classes that fit my schedule. I would love to see more evening classes, especially in the core areas offered for those students like me. I feel in the future there will be a growing number of non-traditional students that would take advantage of these opportunities. I personally had to take classes at other universities in order to graduate from SFA for this very reason.

•The career fairs seem to carter to teachers and accountants/business majors. It would be nice to see other majors being cartered too. Why is Etech one of the employers being represented at the career fairs? I worked at Etech before, if I go 4 years of college just to end up at Etech I would be very disappointed at my self. Please bring in more serious employers.

•Loved my time here at SFA would do it a thousand times over. Two major complaints: parking in the parking garage for communter students (we should have three levels while students who live on campus should only have two). The second would be advising. I had an amazing time being a part of the the LMB and being involved on campus. Couldn't have asked for a better college experience.

•The services at SFA were far from adequate. The buses were continually late, I had to wait months to hear anything important regarding my graduation, I WAS PREVENTED FROM GRADUATING ON TIME THE FIRST TIME THROUGH, I was lied to about the availability of jobs once I graduated the first time. I felt robbed of my tuition every semester.

•I am very dissatisfied that there are more junk food choice than there are healthy, wholesome food choices. Also, I hate riding the elevator in the Library to get to the second floor or really any floor because people mess around or cant make up their minds and the machine takes too long. Plus, I hate the fact that the whole place isn't monitored very well, there are some good books ruined by pizza grease and that's another rule that needs to be thrown out, the one allowing people to bring food into the facility. And the noise in the Library is appalling! I have had no interest in studying in the Library since my freshmen year.



Stephen F. Austin State University Senior Exit Survey Report

AY 2014 (Fall 2013 – Summer 2014)

Please add additional comments about SFA services

Assorted

•There needs to more parking space and the need to come more frequently. The quiet zone in the library are noisy they need to have someone regulate those areas. It is difficult for student who come from abroad to intern with companies before entering gradates school, most companies that show up for career fair do not accept.

•I was pleased with most services. However, I was disappointed with veteran services. I would have been qualified to have veteran services under the hazelwood legacy act, but it was under the university discretion that I was denied. Also, I have been informed by other college financial aid representatives that students can have extensions for pell grants, but this was also under university discretion which I was denied. I almost was unable to complete my degree, but I was awarded a much needed scholarship.

•Not much help, the staff always seemed to refer responsibility because of laziness I suppose. Hire hard workers.

•Impressed with school overall, but dissatisfied with certain professors' academic integrity and attitudes within the school of social work. Will be immediately pursuing a graduate degree, but will not be attending SFA because of dissatisfaction with Stephen Cooper, Wilma Cordova and Teresa Tarver. Did not feel as though I "got my money's worth" due to poor attitudes, unavailability, and disorganization of these faculty members. Other staff members were thought provoking, helpful, genuine and inspiring. All other utilized services were satisfactory.

•More Parking for commuter students. The academic advisors need to be professors WITHIN your major. They actually know the courses and when they will be offered. There were few within my major who had any help from the advising center. We were assigned an advisor there, and still went to our professors for help and advice.

•It doesn't make sense that the dean of my department does not have a degree in social work, while the dean of art does. The professors are not acquainted with the programs so they are not equipped to handle the situations that arise. Also parking is a nightmare, there are a million places for faculty and residents but commuters have to walk miles to get anywhere. Overall I enjoyed my time at SFA, those are the only two things that really affected me.



Stephen F. Austin State University Senior Exit Survey Report

AY 2014 (Fall 2013 – Summer 2014)

Please add additional comments about SFA services

Assorted

•Stop hiring ex convicts to run campus food. It's a disgrace to the college to see full sleeve tattoos and have to learn Ebonics. For having the top forestry and ag program in the state it's a disgrace to see the work our grounds crew does. Listen to the professional DOCTORS you hire. Parking on campus and east college is ridiculous. Fix the road already. I loved my time at SFA but only because of Arthur Temple. To have a program like Sylvans that consistently represents our school with 1,2,or 3rd place every year it's ridiculous that members still pay for their own fuel across the country. Heaven forbid students spend THEIR whole spring break bringing home a trophy for SFA and have to pay for it out of pocket. I am not writin this to bitch but in hopes that someone will realize that Forestry is the highest respected major on campus with nursing and education. Where is any new addition to the forestry building? Where is any strive to show new students how badass the program is here. I am more proud of Arthur temple than I am of SFA and I believe that future students shouldn't have to feel this way. Baker patillo should be proud of the forestry department and I don't see it. I will bleed purple for life and say all this to better the school as a whole

•SFA does a pretty decent job overall, but I would like to make a couple suggestions. The people who ride bikes on campus are a hazard to people walking. There needs to be a bike lane in the high traffic areas on campus or students shouldn't be allowed to ride their bikes in those areas. If we could put in a sidewalk just for bikes or paint areas/lanes on the concrete just for bikes that would be great. I would also like to suggest that the library clean the computers more often. Those computers are absolutely disgusting. It is also very hard to do homework in the computer lab because it is so loud. There are always students in there listening to music blasting through their headphones. They are also always talking loudly about things unrelated to class work. I could understand the chat if it had to do with a group project assignment or studying. I know the computer lab isn't a quiet zone but it would be nice if it was a minimal conversation zone. The Business Office also needs to be more available to students, calling the Business Office is an ordeal since they don't have very many people answering the phones. In general I feel that SFA is a great campus. .

•IF SFA truly cared about their students someone would contact me and discuss the issues I have had...the department of Education truly does not care....I am so thankful I will be graduating in a week and done with this school. I have a daughter who is a Senior in High School and I would NEVER allow her to consider SFA even on campus because of all of the problems in my 2 years with SFA. When friends mention it I make sure to let them know the problems I have had especially if they consider Education. Sure some things were taken care of and others not...the most important thing was for me to graduate with honors...to receive an email a couple of weeks prior to graduation letting me know I am not graduating with honors because I only have 52 quality hours not 54 even though I am in a 6 hour class that is pass/no pass and the science class as I mentioned prior was not an option at SFA because for some reason I was forced to take a third science lab...that was out of my control...someone needs to have the advising more consistent and if SFA is going to offer a full online program all of the classes the final 2 years needs to be offered by SFA online and when the student has to take them i.e. timing for the degree plan.



Stephen F. Austin State University Senior Exit Survey Report

AY 2014 (Fall 2013 – Summer 2014)

Please add additional comments about SFA services

Assorted

•This school needs to work on improving all the facilities and to work to build a new cafeteria and to not allow students in this school who are not prepared for college you are making our school worse!

•Many faculty and staff in the Financial Aid and business office tend to be rude and very disrespectful to students and unwilling to help. Often times they deny students full access of resources to help them.

•If the employees in this department cannot offer any assistance to a masters student seeking employment beyond telling them to look online, why do such people work for the university?

•I like the library facilities but I think it needs to be opened longer, midnight is really early to close a college library. At least for the students that actually study. I was really disappointed with the food selection in the cafeteria, I think there should have been more variety. I also think the cafeterias should have longer hours because taking night classes or labs make it pretty much impossible to make it to the cafeteria for dinner so most of the time I had to waste money buying dinner when I had already paid for it with my meal plan. Even if it's just cereal, I think there should be some selection of food offered 24 hours. The facilities weren't very clean either so I don't know what my meal plan was paying for if the facilities were dirty, didn't have a good selection of food, and I couldn't even eat whenever I needed to. I would have been satisfied eating off campus instead; we shouldn't be forced to pay the meal plan just because we live on campus. I never really had problems parking but it was somewhat frustrating to go to class searching for a spot and seeing so many faculty parking spots not being used when students are struggling to find parking. I also had an issue with the business office because I had paid my tuition for the semester but registered for a class late. When I checked my ebill to see how much was added for the class, it didn't have a due date listed anywhere so I ended up missing the date and the business office didn't do anything to try to help, they didn't even listen to me. Instead, I had to pay an extra 150 dollars to get back into a class I was already in..

•This survey was setup poorly. The questions were loaded questions. There was too much text on the screen that repeated the same unnecessary information. The answering system was poorly done because it allowed room for the take to answer a question twice. I would have liked to review the professors outside my department because I had trouble with my core classes professors but not with my major and I also had some problems with my minor professors. The people that run the school cafeteria are amazing people and have constantly worked hard to getting sustainability going around campus plus they make sure to listen to the students as much as possible.



Stephen F. Austin State University Senior Exit Survey Report

AY 2014 (Fall 2013 – Summer 2014)

Please add additional comments about SFA services

Assorted

•The greek life has changed very much over my four years at SFA. I very much enjoyed my time the first two years. However, after all the major changes and rules being implemented at such a rapid pace it became un-enjoyable at times. The parking for commuters is completely unbarable. I get here an HOUR early to attempt to find a decent parking spot, to have to park out in kingdom come. Then get to wait forever and a day for the bus to come pick me up. I would walk if I knew how long I was going to have to wait, but they ALWAYS forget to turn the trackers on in the mornings. I also do not like that the bus goes all around campus, it is called a COMMUTER BUS for a reason. To take the people who do not live on campus that have to park far away, and drop them off closer to classes. Waste of gas and money to drive in a circle around campus, just because someone is too lazy to walk. Since I am on the subject of parking, the parking garage on Wilson should have limited/designated number of faculty parking in it. I say this because of a few reasons: 1. Faculty has parking surrounding all buildings that classes are held or staff members work in (i.e. all buildings) 2. Due to the garage only having two floors for faculty, and commuters to share. That a good portion go to faculty that are there all day leaving a even more limited number of spots for students. Now the registrars office has done a decent job when it comes to transcripts minus the fact that I cannot download an electronic copy of my unofficial transcript. Which made it very difficult to get my employer a copy via e-mail as they requested. Most importantly though, I have had a very limited amount of information given about graduation, and it is TOMORROW! No e-mail on what time I am supposed to get there, no information on where I am supposed to go once I get to location, no nothing. I had to call around, ask department heads, and more just to have one small piece of information: I have to be there an hour early that is it. GET MORE ORGANIZED with graduation. SFA has what three of them a year, y'all should have that down. It's not like you do not have my e-mail, because I got what feels like 50 e-mails about this survey.

•For the most part I was pleased with my experiences with SFA services. I was dissapointed with the financial aid and business offices becuae I have outside scholarships and it takes me several visits and phone calls to make them understand this and they were slow at processing my information every semester. Plus I was told multiple different solutions to the same problem every time. I only used the health services once due to issues with my eye, a week later I went to my home town doctor and he told me that I have a permanent scar on my eye due to their lack of intervening. They did not help me at all at that visit and because of that I never gone back. I loved the library and career services, they extremely helped me my last semester in planning for the future. I loved the food, the cafeteria staff was incredibly friendly and I loved the variety of options



Stephen F. Austin State University Senior Exit Survey Report

AY 2014 (Fall 2013 – Summer 2014)

How did your campus involvement enhance your overall SFA experience?

Connected	Social	Negative	No Campus Involvement
•better	•At times great, at others just meh.	•it didnt	•Did not live in Nacogdoches.
•good	•A lot	•it didn't	•didnt
•Good	•Allowed me to gain friends	•it didn't	•Didn't have much involvement
•Good	•Allowed me to meet new poeple.	•It didn't.	•Distant learner.
•Good learning experience	•Allowed me to network.	•I dont think it did.	•Distracted from academics.
•Being involved on campus was great	•connections made for future endeavors	•Somewhat	•I didn't have campus involvement
•felt a sense of belonging	•Enhanced my social and speaking skills.	•It made it worse.	•I was not very involved in campus events.
•Gave me a sense of community	•Gave me a more since of involvement	•The research was required to graduate	•I was not very involved on campus
•critical thinking	•gave me something to do besides party.	•it did not	•I was not very involved on campus.
•Allowed me to pursue more of my own opportunity	•Being a part of the LMB made me feel like I was a major part in SFA.	•the campus does not really accept or push for organizations in the arts.	•I am a nontraditional student, I did was not involved on campus
•Always someone there to ask questions or for help	•Got me wanting to do more my girl thought I did too much lol	•It did not enhance my experience in any way.	•This is not really applicable to me as an online completer living 4 hours away.
•Campus involvement made SFA a great place to go to school.	•Help meet friends, helped buff up my resume	•It really did not because I was still anti-social but a little open now	•Was not involved that much on campus because of softball
•Becoming involved was hands down one of the best things that I have ever done here at SFASU!	•Campus involvement really improved my overall SFA experience by helping me to meet new people.	•Traditions council needs a complete overhaul, Amanda Horne is outstanding in Greek life	•I did not really have much involvement as most of my time was spent in the Library writting papers.



Stephen F. Austin State University Senior Exit Survey Report

AY 2014 (Fall 2013 – Summer 2014)

How did your campus involvement enhance your overall SFA experience?

Connected	Social	Negative	No Campus Involvement
<ul style="list-style-type: none"> •Campus Involvement gave me a sense of purpose while in college. I enjoyed helping out others and learning others' backgrounds and culture. •Campus involvement really helped me see where i belong within my major and reassured me of the career path i was taking. •I was heavily involved on campus throughout my time at SFA. Being involved helped me gain knowledge that will help in the real world. Some knowledge and skills that I would not have learned other wise •My campus involvement made my experience at SFA much greater. I feel that I enjoyed my time in college much more because of my involvement in various organizations and activities on campus. 	<ul style="list-style-type: none"> •Campus involvement helped me to maintain a good GPA and develop friendships with people who had common goals. •Being a part of Greek Life let me meet and make connections with people that I otherwise would not have been able to meet •It helped me realize that in life you will deal with different types of people with different stories and you cant control them or your surroundings and all you can do is deal with it and shut up •My campus involvement allowed me to meet a variety of people and make lots of new friends. I grew professionally by developing leadership and communication skills. 	<ul style="list-style-type: none"> •I was in greek life at SFA. It was a fucking joke. The only involvement I wanted on campus was getting the hell out of niggadoches. •SFA was no help at all getting my internships. I found them myself and did all the work to get them. Even when I went for advice, they were no help. •I believe as a current Student Teacher (ST) there should be not other classes required (even on-line) while ST'ing and that ST'ing should be a paid (at least minimal) intership! •I love campus. I wish the nursing building was located on campus. My last two years at SFA (nursing school) I felt almost as if I did not go to SFA. The nursing building is wonderful...I just wish it was on actual campus or closer (walking distance) to it. 	<ul style="list-style-type: none"> •I was more involved in a religious organization off-campus than I was on-campus organizations. •I was unable to very much campus involvement due to being a single, working mother. •I was a studnet athlete and did not have much time for any other than school and sports. •I was in the online completer program, so this question does not apply to my experience.



Stephen F. Austin State University Senior Exit Survey Report

AY 2014 (Fall 2013 – Summer 2014)

How did your campus involvement enhance your overall SFA experience?

Connected	Social	Negative	No Campus Involvement
<p>•If it weren't for my involvement, I would have left. I liked going to classes, and of course I don't mind coursework as it is a part of my education, but due to the treatment I received from professors, I would have left had I not been so involved. I made wonderful connections for careers and developed social skills.</p>	<p>•I wasn't on campus much, unless my organization was there, but when I did go with my organization we met great people and created relationships that we might not of made otherwise. It is important to get involved on your campus. I missed out on a lot before my organization brought me on campus.</p>	<p>•It looks good on my resume, but most clubs/organizations that I have been in (besides greek life) was not taken very seriously. That if they do anything it is a meeting, pay your dues and on your resume it goes. Professional and social organizations should be taken more seriously to really enrich our skills. Not just to prepare us for the world after college, but to better you as a person.</p>	<p>•I wasn't very involved in campus activities. I wish I would have participated more, but I needed to work and study for classes. The involvement I did have was pleasant and I am glad I did the things I did.</p>
<p>•very much</p> <p>•Very much so.</p> <p>•Very supportuve</p> <p>•yes</p> <p>•Yes</p> <p>•yes AAF</p> <p>•Yes it did</p> <p>•Great</p> <p>•Great part of the growth process</p> <p>•Helped me realize I love working with kids.</p> <p>•Helped me study and learn better</p>	<p>•Good networking and involvement</p> <p>•got me involoved</p> <p>•great relationship with faculty</p> <p>•Great! More involvement was good.</p> <p>•Greek Life</p> <p>•Greek life made me a better person</p> <p>•Growth in friendships and networking</p> <p>•Helped make friends.</p> <p>•helped me be more soical</p> <p>•Helped me branch out</p> <p>•Helped me make new friends.</p>		<p>•I was a distance education/online student.</p> <p>•I was too busy with work.</p> <p>•I was uninvolved on campus.</p> <p>•I was not very involved</p> <p>•n/a</p> <p>•n/a</p> <p>•n/a</p> <p>•N/A</p> <p>•N/A</p> <p>•N/A</p> <p>•N/A</p>



Stephen F. Austin State University Senior Exit Survey Report

AY 2014 (Fall 2013 – Summer 2014)

How did your campus involvement enhance your overall SFA experience?

Connected	Social	No Campus Involvement
<ul style="list-style-type: none"> •Help prepare for future job opportunities •helped me learn a lot about my major •Helped raise my GPA •definitely made it more interesting. •i loved the activities •I loved the development department •I enjoyed going to Millard's Crossing. •I was engaged •impacted it a lot •In a very effective way •Made me stay at SFA •makes you fell more at home. •Made me love it even more •Made me feel more connected •Made me feel more connected to SFA •made it better •Made it better! •Made it more enjoyable. •Made it more enjoyable. •Leadership skills •Leadership skills were developed •learn team working skills 	<ul style="list-style-type: none"> •Helped me meet new people •Helped me to meet people. •I meet new people •I met a lot of new people. •I met connections and was able to network. •I met many different kinds of people •I met more people •I got to network with a lot of people. •I met some great people. •Taught me how to be social. •Increased network •I met some great people. •made me more friendly •Met people with my same interests in goals. •more involved •It helped in the social department •It helped me gain a closeness with others. •It helped me get to know more people. •It helped me stay busy •It helped me with my communication skills •It helped to network with alumni. •I was able to work with different students. 	<ul style="list-style-type: none"> •n/a •N/A •n/a •N/A •N?/A •Na •Na •NA •Na •NA •No answer •no involvement •none •None •none •Not Applicable •Not applicable...I am an online student. •Not much •off campus •-online student- •Online Student, N/A •if I would have had time to be more involved I would have been



Stephen F. Austin State University Senior Exit Survey Report

AY 2014 (Fall 2013 – Summer 2014)

How did your campus involvement enhance your overall SFA experience?

Connected	Social	No Campus Involvement
<ul style="list-style-type: none"> •Helped prepare me for what is to come next. •They helped me become more confident in my skills. •Having the speech and hearing clinic on campus really helps with learning. •I did the Undergraduate Research Conference one year. •I became more involved with activities outside my major. •I felt a valued part of the campus and my department. •I enjoyed being in both ODK and Driving Jacks. It gave me something to do outside of studying. •I gave me a more hands on view of what SFA has to offer •I enjoyed the environment and the students, it wasn't like a normal university with 30,000 students and I prefer that. •My involvement in the Wesley foundation and going to sports really enhanced my experience! •I became better acquainted with faculty in my major, learned more about options in my major than could be gained from a class. •Being involved on campus proved to be very beneficial to my experience, and made me enjoy being at SFA so much more. 	<ul style="list-style-type: none"> •I made the best friends of my life, and it really helped SFA feel like home •I made connections with people I would not have otherwise met. •I made friends and developed leadership skills. •I made great friends in Driving Jacks until it was completely overrun by greeks. •I met people i would not have know from classes or hall residence. •I met people that I would not have otherwise met. •I made some wonderful friends, contacts, and inspirational people in various communities thanks to on-line networking. •I met people i would not have know from classes or hall residence. •I participated in intramural sports which allowed me to meet more people and make new friends. •I was a Human Science Ambassador and I loved it it helped me get to know more people. •I got to interact with a variety of people and organizations, making new friends and associates. •I gained many new friendships. I received letters of recommendation due to my campus involvement. 	<ul style="list-style-type: none"> •It was ok, but due to where I lived I didn't spend much time on campus. •I was involved mainly in off-campus organizations. •I was more involved with off campus organizations than on campus. •I wasn't really involved in amps organizations. •i lived too far and have 2 children, did not participate in campus involvement. •I had to work full-time or more my entire college career... •I transferred into SFA for my last two years so I did not have much campus involvement •I was not involved in campus activities but my SFA experience was great. •As a theatre/education major, I didn't have time to do anything but theatre or education. •I am a mature student living with my family off-campus. I don't participate in campus involvement. •I am a non-traditional student and was unable to be involved in many campus activities. •I had to work through school and was really focused on my school work so I did not get involved with much of anything at campus.



Stephen F. Austin State University Senior Exit Survey Report

AY 2014 (Fall 2013 – Summer 2014)

How did your campus involvement enhance your overall SFA experience?

Connected		Social	
<ul style="list-style-type: none"> •It made it so much better. •I would not of stayed at SFA if I had not gone through recruitment. •Campus involvement enhanced my SFA experience keeping me involved and busy •My involvement in the music organizations enhanced my experience a great deal! •I was able to connect with others and gain experience as a professional •getting involved with the Christian ministries changed my attitude in a very positive way •Learned more about the campus and it felt more like a home to me. •Made me feel more involved with the SFA community •I made my experience a change of a lifetime. •Made me feel connected and helped me meet more people. 	<ul style="list-style-type: none"> •I learned more and enjoyed my experience. •If I had not been involved, I probably would not have stayed at SFA. •I was able to serve my community, which is a passion that I want to teach my students. •I have taken useful knowledge from the business program. •Allowed me to not only learn the SFA campus, but the city of Nacogdoches as well •allowed me be prepared for the overall business world •Built self confidence and made me feel more at ease on campus •Made me a part of SFA. Made this my home. •Made me become more active in the school •It allowed me to feel more at home and a greater sense of community with my peers. 	<ul style="list-style-type: none"> •It allowed me to meet new people •It allowed me to meet new people but it was also stressful at times. •It got me better acquainted with different groups of people •It enhanced it by increasing my social life, and personal resources. •It had me well involved and gave me a chance to network with others •Helped me better my social skills and become more comfortable at SFA •It helped me become more involved socially and academically. •Opened up opportunities to network and excel my social experience •Helped to branch out and make connections •Helped me better my social skills and become more comfortable at SFA 	<ul style="list-style-type: none"> •It allowed me to meet my online classmates. •It enabled me to gain friendships and feel more at home. •It got me involved with people outside of my major •It gave me friends that made me feel like part of a family •Helped me gain knowledge for the sorority that I wanted to be apart of •It allowed me to have a tighter community and network between peers. •It allowed me to meet and interact with fellow Lumberjacks. •It gave me motivation to get out of my shell and interact with people. •I worked with a tight knit group of students who helped one another. •Helped me make friends and have fun in college



Stephen F. Austin State University Senior Exit Survey Report

AY 2014 (Fall 2013 – Summer 2014)

How did your campus involvement enhance your overall SFA experience?

Connected	Social	Social	
<ul style="list-style-type: none"> •There is a lot of experience to be learned working for the AARC! •SFA cheerleading involved me in a lot of on campus and off campus activities •They gave me different resources that are applicable to my career. •It allowed me to develop into the strong, motivated leader I am today. •I was thrilled o gain life experience as well as classroom learning. •I was very involved and it made me love it here all the more. •My campus involvement helped me to grow as a future teacher. •Working collaboratively, with a group, has prepared me for group participation in the teaching environment. •In Elementary Ed, going to different schools and working with various students around the city was very helpful. 	<ul style="list-style-type: none"> •It allowed me the chance to get involved in more community service •It did raise a sense of pride about being a lumberjack. •It gave me opportunities to things and stay busy. •it gave me a good ideal of what the teaching field was all about •My campus involvement made my entire SFA experience memorable and fun! •Created a mentoring organization called RISE •It made my experience personal here at SFA and was a huge reason for my desire to stay •It made my overall experience great. After joining a lot of organizations on campus, it made my experience much better. •My campus involvement was my SFA experience. It made me the kind of worker and student I am. 	<ul style="list-style-type: none"> •my campus.involvement gave me social and leadership skills. •made a lot of friends and a lot memories that i will never forget •Made friends, felts apart of sfa community, learned about new organizations •I met people that I would not have otherwise met. •helped me to network and get more involved in my field. •It was nice to be involved and make new friends. •It taught me how to be social in any environment •I was able to work with peers and professional staff. It also made me feel more connected with the university. •I was an extreme introvert before attending SFA, and my campus involvement helped bring me out of my shell. 	<ul style="list-style-type: none"> •It helped me grow into a responsible adult and make friends along the way •It helped me learn to work with a diversity of people with different levels of education. •Helped me meet a lot of people and get to know my teachers really well •Helped to get more involved and meet others. •It taught me how to deal with different people, etc. •I just felt more involved with the campus. it was nice. •Greek life made me stay in school, and become an overall better student and person. •It helped me develop more of a personal connection with my peers and the university as a whole. •It helped me meet more people that were also in my classes, and make lifelong friendships.



Stephen F. Austin State University Senior Exit Survey Report

AY 2014 (Fall 2013 – Summer 2014)

How did your campus involvement enhance your overall SFA experience?

Connected		Social	
<ul style="list-style-type: none"> •It helped me as a growing teacher learn first hand with experience. •It helped me better prepare for the real world. •It helped me build my resume for future job opportunities. •It really let me become a part of something bigger than myself and learn so much. •It built a stronger relationship with the campus and Nacogdoches community as a whole. •it was a good experience because I see the psychology research in my own eyes by helping my teacher study. 	<ul style="list-style-type: none"> •It helped me becoming familiar with others and the campus/community. •It helped me feel that if I needed help there was always resources around for me. •It helped me gain knowledge and experience in the field. •It made my college experience more fun and meaningful. •I did online classes for a Principal Certificate and feel my education was outstanding. My professors were very knowledgeable. •By being involved on campus I not only had a greater knowledge of SFA but I knew more of my resources I had and how to use them. 	<ul style="list-style-type: none"> •It helped me use the university as a networking tool as well as an educational one. •Being involved help me meet alot of other students who were interested in similar things. •created lasting relationships, helped me climb the ladder to notable resources, made East Tx easier to cope with •It allowed me to as a student, to make new friends, become more comfortable with professors and students. •gave me people i could go to for help in other classes and advice on how they went about certain things •My campus involvement enhanced my overall SFA experience by meeting new people every I went and organizations I joined. 	<ul style="list-style-type: none"> •It made me branch out and meet new people, people that I wouldn't normally meet. •Greatly enhanced my SFA experience! I met so many wonderful people through the organizations and on-campus activities. •Involvement allowed for connection to more people leading to more positive experiences and activities. •It helped me to get to know others. The campus involvement was much better than that when I went to U of H main campus. •It would have been a lonely ride without the friends, experiences, and opportunities I gained through campus involvement. •It allowed me the opportunity to meet fellow students who are equally motivated to make a difference. It built a sense of community.



Stephen F. Austin State University Senior Exit Survey Report

AY 2014 (Fall 2013 – Summer 2014)

How did your campus involvement enhance your overall SFA experience?

Connected	Social
<ul style="list-style-type: none"> •I loved all the clubs and organizations I became a part of. They helped me to develop my sense of identity and find my passions. •I got involved with ODK for my last two semesters. I wish I'd been more aware of all the organizations on campus earlier. I really enjoyed my time with ODK •I enjoyed the Face-to-face meeting once a semester with the online completer program for education. I think the program is great for those who cannot participate in a traditional school program. •Enhanced my experience at SFA 100 percent. Everyone has to find something that they are passionate about and get involved. 	<ul style="list-style-type: none"> •Participating in on-campus research with faculty and staff provided information regarding the city of Nacogdoches as a whole •Participating in the Mast Student Investment Roundtable was an experience that will differentiate me during my job search and was extremely informational. •Getting involved is the best way to make college worthwhile. It not only prepares you for the outside world, but it gives you the traditional collegiate friendships that you're supposed to have. •I am the current President of the Fashion Merchandsing Club, and this will something I can cherish forever but also put on my resume. <ul style="list-style-type: none"> •I was on the SFA Pom Squad so it made my SFA experience even more amazing buy introducing me to new people and situations. •I was able to interact more with the faculty and create new and lasting friendships and connections with professionals and other a like. •Being involved around greek life and being involved in academic organizations enhanced my overall SFA experience by making it more enjoyable and providing me a place to network more. <ul style="list-style-type: none"> •Being involved led to be getting to know people who had the same interests at me, allowing me to create friendships since my freshman year. •Being involved with a Greek organization let me meet people I otherwise may not have met and gave opportunities I most likely would not have had. •Being greek really enhanced my SFA experience. It gave me a plave to call home with people that I love dearly. The girls I was surounded with encouraged me personally and academically.



Stephen F. Austin State University Senior Exit Survey Report

AY 2014 (Fall 2013 – Summer 2014)

How did your campus involvement enhance your overall SFA experience?

Connected

<ul style="list-style-type: none">•My campus involvement made my experience here at SFA a great one. I was able to branch out and meet a broad spectrum of students and peers that I can look forward to seeing hopeful in the workforce in my discipline.	<ul style="list-style-type: none">•It's more difficult to work in collaborative groups in an online environment where students are remotely located, but it worked and I was positively impacted by my learning experiences.	<ul style="list-style-type: none">•There is no other time in life other than college when you get the kind of community you get in college. My community at SFA was excellent and a huge part of me loving it and growing here.	<ul style="list-style-type: none">•It has been a great experience throughout these four years, and being involved is what kept me busy through the semester and applying time management to be on top of my school work as well.
<ul style="list-style-type: none">•My campus involvement was THE biggest contributing factor in my SFA experience. I have been very involved with several campus chapters of clubs while attending and it has increased my understanding. Attending events in Texas, Oklahoma, and Pennsylvania with clubs has been an excellent networking opportunity also.	<ul style="list-style-type: none">•My first semester freshmen year, I wasn't involved with anything. It was awful. I became more involved afterwards with RHA and ResLife. That helped more with my experience, especially those first two years of having to live on campus. Being involved with ResLife and other organizations helped my experience be more meaningful and fun.	<ul style="list-style-type: none">•Involvement enhanced my SFA experience because it gave me a chance to represent my school besides being a number. It also gave me a chance to know my professors outside of the classroom and have connections that will last beyond SFA. I also had the chance to experience so many things that I wouldn't have done not being involved.	<ul style="list-style-type: none">•It completely changed by experience for the better. I made great, great friends and became the president of the org. that i was involved in. We have grown so much over the 2 years as president. MLK Day of Service and The Big Event were both great programs that i participated in. RHA also put on some great programs too. SAA keeps doing great things to get everyone involved. It's been awesome.
<ul style="list-style-type: none">•You care more about things when they are important to you. Being involved makes things more important to you, because it's your work. Also it becomes more enjoyable because you meet more people to share your life with.	<ul style="list-style-type: none">•Although I had no help from SFA on finding or getting my nursing internship over the summer, it was by far the best experience I could have gotten and helped me academically and professionally in so many ways	<ul style="list-style-type: none">•It is what kept me at SFA with out the community college students would go crazy. Nacogdoches doesn't have much to offer so most of the social interactions, recreation, and fun comes from the campus.	<ul style="list-style-type: none">•I was only on campus twice a year, but I felt far more connected because of it. I wish I could have been a traditional college student at SFA. I love it there, as does my family!



Stephen F. Austin State University Senior Exit Survey Report

AY 2014 (Fall 2013 – Summer 2014)

How did your campus involvement enhance your overall SFA experience?

Connected			
<ul style="list-style-type: none"> •My campus involvement was what made my experience with SFA great •pleasantly •Scholarships •Involvement made my experience better. •It helped some. •It teaches me a lot •It was fun •It was a good way to see what grad school would be like in my major. •It made the experience better. •It provided opportunities to step out into the world for hands-on experience. •It made me feel reassured that the campus was really made to help me improve •It made being on campus fun and not boring. 	<ul style="list-style-type: none"> •It allowed me to serve others and help meet needs. •positively •Sense of belonging •It has helped me get real-life experience. •It was good. •It was good. •it was great! •It made my experience a lot more personal and memorable •It prepared me for the real world. •It made me feel like I was thought about and that I wasn't alone. •It made me more comfortable with other professors. •It made it a more enjoyable time in my life 	<ul style="list-style-type: none"> •It got me more involved in all that SFA has to offer. •Pretty good •Slightly enhanced •It helped me grow and learn from others. •it was more important than the curriculum. •It was the main reason I stayed at SFA •it went very well. •It opened doors for me. I was exposed to beneficial things •It made me love being at SFA. •It made me feel like I was part of a community. •It made it a little bit better. I enjoy belonging to something. •It made it better. 	<ul style="list-style-type: none"> •It taught me leadership skills and prepared me for my future career. •Provided many skills •Small campus made it easy to get around. •It helped it. •It was fun and I learned a lot. •It made my school years more enjoyable. •It made school much more enjoyable •It opened my eyes what I will experience in my chosen profession. •It made me more aware of SFA policies •It made me feel connected to the community of Nacogdoches as well as SFA. •It made it a more fulfilling experience with the different projects. •it made it so much better



Stephen F. Austin State University Senior Exit Survey Report

AY 2014 (Fall 2013 – Summer 2014)

How did your campus involvement enhance your overall SFA experience?

Connected

- | | | | |
|---|---|---|--|
| <ul style="list-style-type: none">•It made me more knowledgeable and aware of school traditions, customs and introduced me to more people round the town.•I was involved in Greek Life and an academic association and I loved both groups. In terms of Greek Life my only wish is that the Multicultural Greek Council got as much acknowledgement, respect and support from all faculty including those who were in charge of advising it. Personally I think that IFC and SFA Pan Hellenic got way more privileges and rights compared to MGC and we worked just as hard with way fewer people. | <ul style="list-style-type: none">•It made it more enjoyable and being apart of an organization was rewarding•It helped me grow closer to the leader I know I will become. I learned to balance a full course load, be organized with school and organizations, and met several people who brought new perspectives into my life and motivated me to be better and want more for myself. | <ul style="list-style-type: none">•It made it that much more enjoyable and also made me a well rounded person.•It made my experience at SFA so much better. I was involved mainly through my department, but that opened so many doors in itself that I was happy enough where I participated. | <ul style="list-style-type: none">•It made it way better |
|---|---|---|--|



Stephen F. Austin State University Senior Exit Survey Report

AY 2014 (Fall 2013 – Summer 2014)

How did your campus involvement enhance your overall SFA experience?

Connected	Social	Negative	No Campus Involvement
<ul style="list-style-type: none"> •better •good •Good •Good •Good learning experience •Being involved on campus was great •felt a sense of belonging •Gave me a sense of community •critical thinking •Allowed me to pursue more of my own opportunity •Always someone there to ask questions or for help •Campus involvement made SFA a great place to go to school. •Becoming involved was hands down one of the best things that I have ever done here at SFASU! 	<ul style="list-style-type: none"> •At times great, at others just meh. •A lot •Allowed me to gain friends •Allowed me to meet new poeple. •Allowed me to network. •connections made for future endeavors •Enhanced my social and speaking skills. •Gave me a more since of involvement •gave me something to do besides party. •Being a part of the LMB made me feel like I was a major part in SFA. •Got me wanting to do more my girl thought I did too much lol •Help meet friends, helped buff up my resume •Campus involvement really improved my overall SFA experience by helping me to meet new people. 	<ul style="list-style-type: none"> •it didnt •it didn't •it didn't •It didn't. •I dont think it did. •Somewhat •It made it worse. •The research was required to graduate •it did not •the campus does not really accept or push for organizations in the arts. •It did not enhance my experience in any way. •It really did not because I was still anti-social but a little open now •Traditions council needs a complete overhaul, Amanda Horne is outstanding in Greek life 	<ul style="list-style-type: none"> •Did not live in Nacogdoches. •didnt •Didn't have much involvement •Distant learner. •Distracted from academics. •I didn't have campus involvement •I was not very involved in campus events. •I was not very involved on campus •I was not very involved on campus. •I am a nontraditional student, I did was not involved on campus •This is not really applicable to me as an online completer living 4 hours away. •Was not involved that much on campus because of softball •I did not really have much involvement as most of my time was spent in the Library writing papers.



Stephen F. Austin State University Senior Exit Survey Report

AY 2014 (Fall 2013 – Summer 2014)

How did your campus involvement enhance your overall SFA experience?

Connected	Social	Negative	No Campus Involvement
<ul style="list-style-type: none"> •Campus Involvement gave me a sense of purpose while in college. I enjoyed helping out others and learning others' backgrounds and culture. •Campus involvement really helped me see where i belong within my major and reassured me of the career path i was taking. •I was heavily involved on campus throughout my time at SFA. Being involved helped me gain knowledge that will help in the real world. Some knowledge and skills that I would not have learned other wise •My campus involvement made my experience at SFA much greater. I feel that I enjoyed my time in college much more because of my involvement in various organizations and activities on campus. 	<ul style="list-style-type: none"> •Campus involvement helped me to maintain a good GPA and develop friendships with people who had common goals. •Being a part of Greek Life let me meet and make connections with people that I otherwise would not have been able to meet •It helped me realize that in life you will deal with different types of people with different stories and you cant control them or your surroundings and all you can do is deal with it and shut up •My campus involvement allowed me to meet a variety of people and make lots of new friends. I grew professionally by developing leadership and communication skills. 	<ul style="list-style-type: none"> •I was in greek life at SFA. It was a fucking joke. The only involvement I wanted on campus was getting the hell out of niggadoches. •SFA was no help at all getting my internships. I found them myself and did all the work to get them. Even when I went for advice, they were no help. •I believe as a current Student Teacher (ST) there should be not other classes required (even on-line) while ST'ing and that ST'ing should be a paid (at least minimal) intership! •I love campus. I wish the nursing building was located on campus. My last two years at SFA (nursing school) I felt almost as if I did not go to SFA. The nursing building is wonderful...I just wish it was on actual campus or closer (walking distance) to it. 	<ul style="list-style-type: none"> •I was more involved in a religious organization off-campus than I was on-campus organizations. •I was unable to very much campus involvement due to being a single, working mother. •I was a studnet athlete and did not have much time for any other than school and sports. •I was in the online completer program, so this question does not apply to my experience.



Stephen F. Austin State University Senior Exit Survey Report

AY 2014 (Fall 2013 – Summer 2014)

How did your campus involvement enhance your overall SFA experience?

Connected	Social	Negative	No Campus Involvement
<p>•If it weren't for my involvement, I would have left. I liked going to classes, and of course I don't mind coursework as it is a part of my education, but due to the treatment I received from professors, I would have left had I not been so involved. I made wonderful connections for careers and developed social skills.</p>	<p>•I wasn't on campus much, unless my organization was there, but when I did go with my organization we met great people and created relationships that we might not of made otherwise. It is important to get involved on your campus. I missed out on a lot before my organization brought me on campus.</p>	<p>•It looks good on my resume, but most clubs/organizations that I have been in (besides greek life) was not taken very seriously. That if they do anything it is a meeting, pay your dues and on your resume it goes. Professional and social organizations should be taken more seriously to really enrich our skills. Not just to prepare us for the world after college, but to better you as a person.</p>	<p>•I wasn't very involved in campus activities. I wish I would have participated more, but I needed to work and study for classes. The involvement I did have was pleasant and I am glad I did the things I did.</p>
<p>•very much</p> <p>•Very much so.</p> <p>•Very supportuve</p> <p>•yes</p> <p>•Yes</p> <p>•yes AAF</p> <p>•Yes it did</p> <p>•Great</p> <p>•Great part of the growth process</p> <p>•Helped me realize I love working with kids.</p> <p>•Helped me study and learn better</p>	<p>•Good networking and involvement</p> <p>•got me involoved</p> <p>•great relationship with faculty</p> <p>•Great! More involvement was good.</p> <p>•Greek Life</p> <p>•Greek life made me a better person</p> <p>•Growth in friendships and networking</p> <p>•Helped make friends.</p> <p>•helped me be more soical</p> <p>•Helped me branch out</p> <p>•Helped me make new friends.</p>		<p>•I was a distance education/online student.</p> <p>•I was too busy with work.</p> <p>•I was uninvolved on campus.</p> <p>•I was not very involved</p> <p>•n/a</p> <p>•n/a</p> <p>•n/a</p> <p>•N/A</p> <p>•N/A</p> <p>•N/A</p> <p>•N/A</p>



Stephen F. Austin State University Senior Exit Survey Report

AY 2014 (Fall 2013 – Summer 2014)

How did your campus involvement enhance your overall SFA experience?

Connected	Social	No Campus Involvement
<ul style="list-style-type: none"> •Help prepare for future job opportunities •helped me learn a lot about my major •Helped raise my GPA •definitely made it more interesting. •i loved the activities •I loved the development department •I enjoyed going to Millard's Crossing. •I was engaged •impacted it a lot •In a very effective way •Made me stay at SFA •makes you fell more at home. •Made me love it even more •Made me feel more connected •Made me feel more connected to SFA •made it better •Made it better! •Made it more enjoyable. •Made it more enjoyable. •Leadership skills •Leadership skills were developed •learn team working skills 	<ul style="list-style-type: none"> •Helped me meet new people •Helped me to meet people. •I meet new people •I met a lot of new people. •I met connections and was able to network. •I met many different kinds of people •I met more people •I got to network with a lot of people. •I met some great people. •Taught me how to be social. •Increased network •I met some great people. •made me more friendly •Met people with my same interests in goals. •more involved •It helped in the social department •It helped me gain a closeness with others. •It helped me get to know more people. •It helped me stay busy •It helped me with my communication skills •It helped to network with alumni. •I was able to work with different students. 	<ul style="list-style-type: none"> •n/a •N/A •n/a •N/A •N?/A •Na •Na •NA •Na •NA •No answer •no involvement •none •None •none •Not Applicable •Not applicable...I am an online student. •Not much •off campus •-online student- •Online Student, N/A •if I would have had time to be more involved I would have been



Stephen F. Austin State University Senior Exit Survey Report

AY 2014 (Fall 2013 – Summer 2014)

How did your campus involvement enhance your overall SFA experience?

Connected	Social	No Campus Involvement
<ul style="list-style-type: none"> •Helped prepare me for what is to come next. •They helped me become more confident in my skills. •Having the speech and hearing clinic on campus really helps with learning. •I did the Undergraduate Research Conference one year. •I became more involved with activities outside my major. •I felt a valued part of the campus and my department. •I enjoyed being in both ODK and Driving Jacks. It gave me something to do outside of studying. •I gave me a more hands on view of what SFA has to offer •I enjoyed the environment and the students, it wasn't like a normal university with 30,000 students and I prefer that. •My involvement in the Wesley foundation and going to sports really enhanced my experience! •I became better acquainted with faculty in my major, learned more about options in my major than could be gained from a class. •Being involved on campus proved to be very beneficial to my experience, and made me enjoy being at SFA so much more. 	<ul style="list-style-type: none"> •I made the best friends of my life, and it really helped SFA feel like home •I made connections with people I would not have otherwise met. •I made friends and developed leadership skills. •I made great friends in Driving Jacks until it was completely overrun by greeks. •I met people i would not have know from classes or hall residence. •I met people that I would not have otherwise met. •I made some wonderful friends, contacts, and inspirational people in various communities thanks to on-line networking. •I met people i would not have know from classes or hall residence. •I participated in intramural sports which allowed me to meet more people and make new friends. •I was a Human Science Ambassador and I loved it it helped me get to know more people. •I got to interact with a variety of people and organizations, making new friends and associates. •I gained many new friendships. I received letters of recommendation due to my campus involvement. 	<ul style="list-style-type: none"> •It was ok, but due to where I lived I didn't spend much time on campus. •I was involved mainly in off-campus organizations. •I was more involved with off campus organizations than on campus. •I wasn't really involved in amps organizations. •i lived too far and have 2 children, did not participate in campus involvement. •I had to work full-time or more my entire college career... •I transferred into SFA for my last two years so I did not have much campus involvement •I was not involved in campus activities but my SFA experience was great. •As a theatre/education major, I didn't have time to do anything but theatre or education. •I am a mature student living with my family off-campus. I don't participate in campus involvement. •I am a non-traditional student and was unable to be involved in many campus activities. •I had to work through school and was really focused on my school work so I did not get involved with much of anything at campus.



Stephen F. Austin State University Senior Exit Survey Report

AY 2014 (Fall 2013 – Summer 2014)

How did your campus involvement enhance your overall SFA experience?

Connected	Social	Social	Social
<ul style="list-style-type: none"> •It made it so much better. •I would not of stayed at SFA if I had not gone through recruitment. •Campus involvement enhanced my SFA experience keeping me involved and busy •My involvement in the music organizations enhanced my experience a great deal! •I was able to connect with others and gain experience as a professional •getting involved with the Christian ministries changed my attitude in a very positive way •Learned more about the campus and it felt more like a home to me. •Made me feel more involved with the SFA community •I made my experience a change of a lifetime. •Made me feel connected and helped me meet more people. 	<ul style="list-style-type: none"> •I learned more and enjoyed my experience. •If I had not been involved, I probably would not have stayed at SFA. •I was able to serve my community, which is a passion that I want to teach my students. •I have taken useful knowledge from the business program. •Allowed me to not only learn the SFA campus, but the city of Nacogdoches as well •allowed me be prepared for the overall business world •Built self confidence and made me feel more at ease on campus •Made me a part of SFA. Made this my home. •Made me become more active in the school •It allowed me to feel more at home and a greater sense of community with my peers. 	<ul style="list-style-type: none"> •It allowed me to meet new people •It allowed me to meet new people but it was also stressful at times. •It got me better acquainted with different groups of people •It enhanced it by increasing my social life, and personal resources. •It had me well involved and gave me a chance to network with others •Helped me better my social skills and become more comfortable at SFA •It helped me become more involved socially and academically. •Opened up opportunities to network and excel my social experience •Helped to branch out and make connections •Helped me better my social skills and become more comfortable at SFA 	<ul style="list-style-type: none"> •It allowed me to meet my online classmates. •It enabled me to gain friendships and feel more at home. •It got me involved with people outside of my major •It gave me friends that made me feel like part of a family •Helped me gain knowledge for the sorority that I wanted to be apart of •It allowed me to have a tighter community and network between peers. •It allowed me to meet and interact with fellow Lumberjacks. •It gave me motivation to get out of my shell and interact with people. •I worked with a tight knit group of students who helped one another. •Helped me make friends and have fun in college



Stephen F. Austin State University Senior Exit Survey Report

AY 2014 (Fall 2013 – Summer 2014)

How did your campus involvement enhance your overall SFA experience?

Connected	Social	Social	
<ul style="list-style-type: none"> •There is a lot of experience to be learned working for the AARC! •SFA cheerleading involved me in a lot of on campus and off campus activities •They gave me different resources that are applicable to my career. •It allowed me to develop into the strong, motivated leader I am today. •I was thrilled o gain life experience as well as classroom learning. •I was very involved and it made me love it here all the more. •My campus involvement helped me to grow as a future teacher. •Working collaboratively, with a group, has prepared me for group participation in the teaching environment. •In Elementary Ed, going to different schools and working with various students around the city was very helpful. 	<ul style="list-style-type: none"> •It allowed me the chance to get involved in more community service •It did raise a sense of pride about being a lumberjack. •It gave me opportunities to things and stay busy. •it gave me a good ideal of what the teaching field was all about •My campus involvement made my entire SFA experience memorable and fun! •Created a mentoring organization called RISE •It made my experience personal here at SFA and was a huge reason for my desire to stay •It made my overall experience great. After joining a lot of organizations on campus, it made my experience much better. •My campus involvement was my SFA experience. It made me the kind of worker and student I am. 	<ul style="list-style-type: none"> •my campus.involvement gave me social and leadership skills. •made a lot of friends and a lot memories that i will never forget •Made friends, felts apart of sfa community, learned about new organizations •I met people that I would not have otherwise met. •helped me to network and get more involved in my field. •It was nice to be involved and make new friends. •It taught me how to be social in any environment •I was able to work with peers and professional staff. It also made me feel more connected with the university. •I was an extreme introvert before attending SFA, and my campus involvement helped bring me out of my shell. 	<ul style="list-style-type: none"> •It helped me grow into a responsible adult and make friends along the way •It helped me learn to work with a diversity of people with different levels of education. •Helped me meet a lot of people and get to know my teachers really well •Helped to get more involved and meet others. •It taught me how to deal with different people, etc. •I just felt more involved with the campus. it was nice. •Greek life made me stay in school, and become an overall better student and person. •It helped me develop more of a personal connection with my peers and the university as a whole. •It helped me meet more people that were also in my classes, and make lifelong friendships.



Stephen F. Austin State University Senior Exit Survey Report

AY 2014 (Fall 2013 – Summer 2014)

How did your campus involvement enhance your overall SFA experience?

Connected		Social	
<ul style="list-style-type: none"> •It helped me as a growing teacher learn first hand with experience. •It helped me better prepare for the real world. •It helped me build my resume for future job opportunities. •It really let me become a part of something bigger than myself and learn so much. •It built a stronger relationship with the campus and Nacogdoches community as a whole. •it was a good experience because I see the psychology research in my own eyes by helping my teacher study. 	<ul style="list-style-type: none"> •It helped me becoming familiar with others and the campus/community. •It helped me feel that if I needed help there was always resources around for me. •It helped me gain knowledge and experience in the field. •It made my college experience more fun and meaningful. •I did online classes for a Principal Certificate and feel my education was outstanding. My professors were very knowledgeable. •By being involved on campus I not only had a greater knowledge of SFA but I knew more of my resources I had and how to use them. 	<ul style="list-style-type: none"> •It helped me use the university as a networking tool as well as an educational one. •Being involved help me meet alot of other students who were interested in similar things. •created lasting relationships, helped me climb the ladder to notable resources, made East Tx easier to cope with •It allowed me to as a student, to make new friends, become more comfortable with professors and students. •gave me people i could go to for help in other classes and advice on how they went about certain things •My campus involvement enhanced my overall SFA experience by meeting new people every I went and organizations I joined. 	<ul style="list-style-type: none"> •It made me branch out and meet new people, people that I wouldn't normally meet. •Greatly enhanced my SFA experience! I met so many wonderful people through the organizations and on-campus activities. •Involvement allowed for connection to more people leading to more positive experiences and activities. •It helped me to get to know others. The campus involvement was much better than that when I went to U of H main campus. •It would have been a lonely ride without the friends, experiences, and opportunities I gained through campus involvement. •It allowed me the opportunity to meet fellow students who are equally motivated to make a difference. It built a sense of community.



Stephen F. Austin State University Senior Exit Survey Report

AY 2014 (Fall 2013 – Summer 2014)

How did your campus involvement enhance your overall SFA experience?

Connected	Social
<ul style="list-style-type: none"> •I loved all the clubs and organizations I became a part of. They helped me to develop my sense of identity and find my passions. •I got involved with ODK for my last two semesters. I wish I'd been more aware of all the organizations on campus earlier. I really enjoyed my time with ODK •I enjoyed the Face-to-face meeting once a semester with the online completer program for education. I think the program is great for those who cannot participate in a traditional school program. •Enhanced my experience at SFA 100 percent. Everyone has to find something that they are passionate about and get involved. 	<ul style="list-style-type: none"> •Participating in on-campus research with faculty and staff provided information regarding the city of Nacogdoches as a whole •Participating in the Mast Student Investment Roundtable was an experience that will differentiate me during my job search and was extremely informational. •Getting involved is the best way to make college worthwhile. It not only prepares you for the outside world, but it gives you the traditional collegiate friendships that you're supposed to have. •I am the current President of the Fashion Merchandsing Club, and this will something I can cherish forever but also put on my resume. <ul style="list-style-type: none"> •I was on the SFA Pom Squad so it made my SFA experience even more amazing buy introducing me to new people and situations. •I was able to interact more with the faculty and create new and lasting friendships and connections with professionals and other a like. •Being involved around greek life and being involved in academic organizations enhanced my overall SFA experience by making it more enjoyable and providing me a place to network more. <ul style="list-style-type: none"> •Being involved led to be getting to know people who had the same interests at me, allowing me to create friendships since my freshman year. •Being involved with a Greek organization let me meet people I otherwise may not have met and gave opportunities I most likely would not have had. •Being greek really enhanced my SFA experience. It gave me a plave to call home with people that I love dearly. The girls I was surounded with encouraged me personally and academically.



Stephen F. Austin State University Senior Exit Survey Report

AY 2014 (Fall 2013 – Summer 2014)

How did your campus involvement enhance your overall SFA experience?

Connected

<ul style="list-style-type: none">•My campus involvement made my experience here at SFA a great one. I was able to branch out and meet a broad spectrum of students and peers that I can look forward to seeing hopeful in the workforce in my discipline.	<ul style="list-style-type: none">•It's more difficult to work in collaborative groups in an online environment where students are remotely located, but it worked and I was positively impacted by my learning experiences.	<ul style="list-style-type: none">•There is no other time in life other than college when you get the kind of community you get in college. My community at SFA was excellent and a huge part of me loving it and growing here.	<ul style="list-style-type: none">•It has been a great experience throughout these four years, and being involved is what kept me busy through the semester and applying time management to be on top of my school work as well.
<ul style="list-style-type: none">•My campus involvement was THE biggest contributing factor in my SFA experience. I have been very involved with several campus chapters of clubs while attending and it has increased my understanding. Attending events in Texas, Oklahoma, and Pennsylvania with clubs has been an excellent networking opportunity also.	<ul style="list-style-type: none">•My first semester freshmen year, I wasn't involved with anything. It was awful. I became more involved afterwards with RHA and ResLife. That helped more with my experience, especially those first two years of having to live on campus. Being involved with ResLife and other organizations helped my experience be more meaningful and fun.	<ul style="list-style-type: none">•Involvement enhanced my SFA experience because it gave me a chance to represent my school besides being a number. It also gave me a chance to know my professors outside of the classroom and have connections that will last beyond SFA. I also had the chance to experience so many things that I wouldn't have done not being involved.	<ul style="list-style-type: none">•It completely changed by experience for the better. I made great, great friends and became the president of the org. that i was involved in. We have grown so much over the 2 years as president. MLK Day of Service and The Big Event were both great programs that i participated in. RHA also put on some great programs too. SAA keeps doing great things to get everyone involved. It's been awesome.
<ul style="list-style-type: none">•You care more about things when they are important to you. Being involved makes things more important to you, because it's your work. Also it becomes more enjoyable because you meet more people to share your life with.	<ul style="list-style-type: none">•Although I had no help from SFA on finding or getting my nursing internship over the summer, it was by far the best experience I could have gotten and helped me academically and professionally in so many ways	<ul style="list-style-type: none">•It is what kept me at SFA with out the community college students would go crazy. Nacogdoches doesn't have much to offer so most of the social interactions, recreation, and fun comes from the campus.	<ul style="list-style-type: none">•I was only on campus twice a year, but I felt far more connected because of it. I wish I could have been a traditional college student at SFA. I love it there, as does my family!



Stephen F. Austin State University Senior Exit Survey Report

AY 2014 (Fall 2013 – Summer 2014)

How did your campus involvement enhance your overall SFA experience?

Connected

<ul style="list-style-type: none"> •My campus involvement was what made my experience with SFA great •pleasantly •Scholarships •Involvement made my experience better. •It helped some. •It teaches me a lot •It was fun •It was a good way to see what grad school would be like in my major. •It made the experience better. •It provided opportunities to step out into the world for hands-on experience. •It made me feel reassured that the campus was really made to help me improve •It made being on campus fun and not boring. 	<ul style="list-style-type: none"> •It allowed me to serve others and help meet needs. •positively •Sense of belonging •It has helped me get real-life experience. •It was good. •It was good. •it was great! •It made my experience a lot more personal and memorable •It prepared me for the real world. •It made me feel like I was thought about and that I wasn't alone. •It made me more comfortable with other professors. •It made it a more enjoyable time in my life 	<ul style="list-style-type: none"> •It got me more involved in all that SFA has to offer. •Pretty good •Slightly enhanced •It helped me grow and learn from others. •it was more important than the curriculum. •It was the main reason I stayed at SFA •it went very well. •It opened doors for me. I was exposed to beneficial things •It made me love being at SFA. •It made me feel like I was part of a community. •It made it a little bit better. I enjoy belonging to something. •It made it better. 	<ul style="list-style-type: none"> •It taught me leadership skills and prepared me for my future career. •Provided many skills •Small campus made it easy to get around. •It helped it. •It was fun and I learned a lot. •It made my school years more enjoyable. •It made school much more enjoyable •It opened my eyes what I will experience in my chosen profession. •It made me more aware of SFA policies •It made me feel connected to the community of Nacogdoches as well as SFA. •It made it a more fulfilling experience with the different projects. •it made it so much better
--	--	--	---



Stephen F. Austin State University Senior Exit Survey Report

AY 2014 (Fall 2013 – Summer 2014)

How did your campus involvement enhance your overall SFA experience?

Connected

- It made me more knowledgeable and aware of school traditions, customs and introduced me to more people round the town.
- I was involved in Greek Life and an academic association and I loved both groups. In terms of Greek Life my only wish is that the Multicultural Greek Council got as much acknowledgement, respect and support from all faculty including those who were in charge of advising it. Personally I think that IFC and SFA Pan Hellenic got way more privileges and rights compared to MGC and we worked just as hard with way fewer people.

- It made it more enjoyable and being apart of an organization was rewarding

- It helped me grow closer to the leader I know I will become. I learned to balance a full course load, be organized with school and organizations, and met several people who brought new perspectives into my life and motivated me to be better and want more for myself.

- It made it that much more enjoyable and also made me a well rounded person.

- It made my experience at SFA so much better. I was involved mainly through my department, but that opened so many doors in itself that I was happy enough where I participated.

- It made it way better