



# LUMBERJACK ORIENTATION HANDBOOK



**STEPHEN F. AUSTIN  
STATE UNIVERSITY**

NACOGDOCHES, TEXAS

**2023-24**





# WELCOME TO THE LAND OF ACADEMICS AND AXE HANDLES.



This handbook contains the details you need to know about SFA (like where to get help deciding on a major) and includes the stuff you want to know (like on-campus dining choices). It's also chock-full of helpful information on how to make the adjustment to college life and get acquainted with your soon-to-be alma mater.


**Enjoy the journey!**

## SFA'S OFFICIAL SOCIAL MEDIA:

    @sfasu

 @SFAlumberjacks

 @sfa\_jacks

 Stephen F. Austin State University

## ORIENTATION SOCIAL MEDIA:

  @sfaorientation

 @sfa\_orientation

## WEEKS OF WELCOME SOCIAL MEDIA:

   @sfawow



**Look for the Jack Facts icon for  
interesting tidbits about SFA.**

# ACADEMICS

COUNTLESS THINGS  
TO LEARN ALL IN ONE PLACE



## THE FLEXIBLE WAYS SFA OFFERS CLASSES



### Face-to-Face

A traditional course in which you attend class with faculty and students on campus for each class meeting.



### Online (anytime)

Content and activities are delivered online. No on-campus attendance is required, and you can engage in the course at any time.



### Livestream

Regularly scheduled class sessions are delivered via Zoom, with real-time interaction between you, the faculty and students. No on-campus attendance is required.



### Hybrid

Delivered as a blend of face-to-face and online, face-to-face and livestream, or online and livestream.

Classes meet at regular, scheduled intervals.

Your faculty member will share the dates and times when on-campus or livestream attendance is required.



### HyFlex

You decide whether to attend the class face-to-face, via livestream at scheduled times, online anytime, or any combination.

## FAVORITE STUDY SPOTS ON CAMPUS

Anywhere  
with a plug

Starbucks  
on and off  
campus

Baker Pattillo  
Student  
Center patio  
area

Fourth floor  
of the Steen  
Library

Picnic table  
in any  
of SFA's  
gardens

# MAJORS, MINORS AND CONCENTRATIONS

Visit [sfasu.edu/academics](https://sfasu.edu/academics) for more information about SFA's six colleges and academic offerings, which are subject to change. Lumberjacks can choose from about 80 undergraduate majors and more than 120 areas of study.

Major	★
Concentration	●
Minor	▶
Fully Online Program	■

## James I. Perkins College of Education

- |   |  |  |
|---|--|--|
| <ul style="list-style-type: none"> <li>Addiction Studies ▶</li> <li>All-Level Teaching - Kinesiology ●</li> <li>Athletic Coaching ▶</li> <li>Aviation Sciences ★</li> <li>Communication Sciences and Disorders ★▶</li> <li>Community Health ●</li> <li>Construction Management ★</li> <li>Culinary ●</li> <li>Dance Team Coaching ▶</li> <li>Dance ★▶</li> <li>Deaf and Hard of Hearing ★▶</li> <li>Deaf Services ●</li> <li>Dietetics and Nutritional Sciences ★</li> <li>Early Childhood Education ▶</li> <li>Early Intervention ▶</li> <li>Educational Interpreting ▶</li> <li>Elementary Teaching - Deaf and Hard of Hearing ●</li> <li>Exercise Science ●▶</li> <li>Family and Consumer Sciences ●▶</li> </ul> | <ul style="list-style-type: none"> <li>Fashion Merchandising ●</li> <li>Fitness and Human Performance ▶</li> <li>Food and Nutrition ★▶</li> <li>Health Science ★▶</li> <li>Hospitality Administration ★▶</li> <li>Human Development and Family Studies ●▶</li> <li>Human Sciences ★■</li> <li>Human Services ★</li> <li>Interdisciplinary Studies ★</li> <li>Core Subjects EC-6 ●</li> <li>Core Subjects 4-8 ●</li> <li>English/Language Arts/Reading 4-8 ●</li> <li>Math 4-8 ●</li> <li>Science 4-8 ●</li> <li>Social Studies 4-8 ●</li> <li>Special Education ●</li> <li>Interior Design ★▶</li> <li>Interior Merchandising ●</li> <li>Kinesiology ★▶</li> </ul> | <ul style="list-style-type: none"> <li>Lodging ●</li> <li>Meeting Planning ●</li> <li>Merchandising ★▶</li> <li>Nonregistered Dietitian ●</li> <li>Nutrition in Healthcare ▶</li> <li>Orientation and Mobility ●</li> <li>Performance and Choreography - Dance ●</li> <li>Pre-Audiology ★</li> <li>Preprofessional Registered Dietitian ●</li> <li>Registered Dietitian ●</li> <li>Rehabilitation Services ★●▶</li> <li>Restaurant ●</li> <li>Secondary Education ▶</li> <li>Secondary Teaching - Dance ●</li> <li>Secondary Teaching - Deaf and Hard of Hearing ●</li> <li>Special Education, Nonteaching ▶</li> <li>Special Education, Teaching ▶</li> <li>Travel and Tourism ●</li> </ul> |
|---|--|--|

## Nelson Rusche College of Business

Accounting ★►  
 Banking ★  
 Business Communication and Corporate Education ★  
 Business Communication ►  
 Business Economics ★►  
 Corporate Communication ●  
 Economics ★►  
 Electronic Business ►  
 Entrepreneurship ★►  
 Finance ★►  
 Financial Planning ●  
 General Business Technology Applications ►  
 General Business ★►■  
 Human Resource Management ★►  
 International Business ★►  
 Investment Management ●  
 Legal Studies ●►  
 Management ★►  
 Marketing ★►  
 Sales ►  
 Sports Business ★►■

## Arthur Temple College of Forestry and Agriculture

Agribusiness ●►  
 Agriculture Development ●  
 Agriculture Engineering Technology ●►  
 Agriculture ★►  
 Agroforestry ●  
 Animal Science ●►  
 Cultural Resources ●  
 Discipline Specialization ●  
 Environmental Science ★►  
 Equine Science ●►  
 Fire Management ●  
 Forest Management ●  
 Forestry ★►  
 Forest Wildlife Management ●  
 Geospatial Science ★►  
 Horticulture ●►  
 Human Dimensions in Natural Resources ●  
 Land, Air and Water Resources ●  
 Land Surveying ●  
 Natural Resources ●  
 Poultry Science ●►  
 Pre-Veterinarian ●►  
 Urban Forestry ●

## College of Liberal and Applied Arts

Applied Arts and Sciences ★	Leadership ►	Secondary Education -
Advertising/Public Relations ●	Liberal Studies ★	Communication Studies ★
Anthropology ●►	Linguistics ●►	Secondary Education - Geography ●
Communication Studies ★►	Literature ●	Secondary Education - History ●
Creative Writing ★►	Mass Communication ★►	Secondary Education - English ●
Criminal Justice ★►	Medical Humanities ★	Social Media ●►
Dual Languages - Modern Languages ●	Military Science ►	Social Sciences - Public
English ★►	Modern Languages ★►	Administration ►
Film Studies ►	Philosophy ★●►	Social Studies ●
French ●►	Political Science ★►	Social Welfare ►
General Studies ★	Portuguese ●►	Social Work ★
Geography ★►	Pre-law ►	Sociology ★►
German ●►	Private Security and Asset Protection ►	Spanish ●►
History ★►	Psychology ★►	Sustainable Community
International and Intercultural	Public Administration ★►	Development ★●
Communication ★	Public History ►	Teaching - Modern Languages ★
International Studies ►	Radio/Television ●	Technical Writing ►
Journalism ●	Religious Studies ●►	Women's and Gender Studies ►
Latin American Studies ►		

## Micky Elliott College of Fine Arts

- Acting and Directing ●
- Art ►
  - Ceramics ●
  - Digital Media ●
  - Drawing ●
  - Filmmaking/ Cinematography ●
  - Graphic Design ●
  - Jewelry ●
  - Painting ●
  - Photography ●
  - Printmaking ●
  - Sculpture ●
- Art Education ★
  - Ceramics ●
  - Digital Media ●
  - Drawing ●
  - Filmmaking/ Cinematography ●
  - Graphic Design ●
  - Jewelry ●
  - Painting ●
  - Photography ●
  - Printmaking ●
  - Sculpture ●
- Composition - Music ●
- Design and Technology - Theatre ●
- General Studies - Theatre ●
- Music ★►
- Music Education ★
  - Choral - Vocal ●
  - Choral - Piano ●
  - Elementary Music ●
  - Instrumental Piano ●
  - Instrumental Strings ●
  - Instrumental Wind ●
- Music Performance ★
  - Keyboard ●
  - Keyboard - Pedagogy ●
  - Orchestral Instrument ●
  - Voice ●
- Music Voice for Theatre ►
- Sound Recording Technology ●
- Stage Management ●
- Studio Art ★
  - Ceramics ●
  - Digital Media ●
  - Drawing ●
  - Filmmaking/ Cinematography ●
  - Graphic Design ●
  - Jewelry ●
  - Painting ●
  - Photography ●
  - Printmaking ●
  - Sculpture ●
- Theatre Education ★
- Theatre ★►

## Pre-Health Professions Program

This program is designed for students seeking admission to professional schools. Students select any major and work within the pre-health profession program for academic guidance, professional exploration and school admission assistance.

- Pre-Chiropractic
- Pre-Pharmacy
- Pre-Dentistry
- Pre-Physical Therapy
- Pre-Medicine
- Pre-Physician Assistant
- Pre-Occupational Therapy
- Pre-Veterinary
- Pre-Optometry

## Pre-Engineering Program

Students wishing to major in engineering may take their first two years in pre-engineering at SFA then transfer to a college of engineering for their final two years. Pre-engineering students normally pursue degrees in the following fields of engineering:

- Chemical
- Civil
- Electrical
- Mechanical
- Petroleum

## College of Sciences and Mathematics

- Actuarial Studies ●
- Combined Sciences ►
- Geology ★►
- Applied Physics ►
- Computer Information Systems ★►
- Geosciences ●
- Applied Statistics ►
- Computer Science ★►
- Human Health Perspectives ►
- Astronomy ►
- Data Analytics ★
- Information Technology ★►
- Biochemistry ★
- Data Sciences - Mathematics ●
- Interdisciplinary Chemistry ●
- Biology ★►
- Ecology and Evolutionary ●
- Mathematics ★►
- Botany ●
- Engineering Physics ★►
- Nursing ★
- Cellular and Molecular ●
- Electrical ●\*
- Physics ★►
- Chemistry Education ●
- Mechanical ●\*
- Secondary Teaching (JacksTeach) ►
- Chemistry ★►
- Fermentation Science ●

Major	★
Concentration	●
Minor	►
Fully Online Program	■

\*Pending approval

Successful Lumberjacks are always aware of important dates and events. Be sure to reference the [university calendar](#) in the Undergraduate Bulletin, which can be found online at [catalog.sfasu.edu](http://catalog.sfasu.edu).

# ACADEMIC TERMINOLOGY

## READ NOW. QUIZ LATER. JK

Below are a few words, titles, descriptions and phrases commonly used in academia that you need to know to be a successful student.

**Academic Advisor:** A professional staff or faculty member who helps students select courses and plan for the future.

**Academic Year:** Starts on the first day of fall classes and ends in mid-August after summer final exams.

**Brightspace by D2L:** This learning management system is the gateway to your online courses as well as supporting materials for traditional classroom-based courses. It is often the platform in which you'll submit assignments, take quizzes and exams, and receive assignment grades. (You'll hear it referred to as both Brightspace and D2L.) Accessible via [d2l.sfasu.edu](https://d2l.sfasu.edu) or [mysfa.sfasu.edu](https://mysfa.sfasu.edu).

**Class Hour:** One hour of time spent in class per week. Most classes are three class hours, meaning they meet for approximately three hours per week.

**Continued Probation, Academic:** Probation undergraduate students whose semester GPA is 2.0 or higher but their cumulative GPA fails to meet the minimum standard 2.0.

**Core Curriculum:** The general educational requirements needed to obtain a degree. These are in addition to the courses required in the student's major.

**Co-requisite:** A class that must be taken with another class.

**Dean:** A person with significant authority over a specific academic unit, area of concern or both.

**Dean's List:** Students who earn a 3.5 GPA in a semester with at least 12 quality hours. Courses excluded from grade-point computation also are excluded from quality hours and may not be used to determine honor roll status.

**Degree Plan:** The document provided by academic departments and colleges that specifies the courses required to earn a certain degree.

**Development Course:** A foundational support course designed for students to learn the skills required for academic success in college-level coursework. These foundational support courses do not apply to a student's degree plan of study.

**Dropping Courses:** The process of removing one specific course from a semester schedule while remaining enrolled in other courses. Students may drop a

course until the fifth business day prior to the first day of final exams for the appropriate part of term.

**Full-time Students:** For Title IV purposes, any student registered for 12 semester hours or more during the fall, spring or summer term is considered a full-time student.

**Grade-point Average:** Calculated as the total number of grade points received over a given period divided by the total number of credits awarded — GPA for short.

**Hold:** A block put on a student's account that may prevent the student from registering or receiving a transcript. For example, a hold is placed on an account before the student has been academically advised prior to course registration, if a student owes an outstanding balance to the university, etc.

**Independent Study:** Individual work on a special topic that is supervised by a faculty member. The student's academic department must approve the project in advance, and a faculty member must agree to oversee the work.

**Internship:** On-the-job experience relevant to a student's major and/or career interest that may also provide academic credit. The Center for Career and Professional Development can help students find internships in their chosen career field.

**Lab:** Laboratory work provides students with the opportunity to apply principles learned in lecture classes.

**Lecture:** A class where the primary method of instruction is lecturing. There may be relatively little interaction between the faculty member and students during class, which is why it is important for students to utilize the faculty members office hours.

**Major:** Upper-division study in an academic department. Approximately 30 to 36 class hours in a specific field of study.

**Minor:** Course concentration in a field outside a major; requires approximately 18 hours of specified coursework. Not all majors require a minor.

**mySFA:** Part of SFA's website where students can access their email, update their personal information, register for and drop classes, check their grades, view holds on accounts, and pay tuition and fees, among many other services. Students also may access D2L, Zoom and Office 365.

**Prerequisite:** A course that must be satisfactorily completed in order to enroll in a subsequent course.

**President's Honor Roll:** Students who earn a 4.0 GPA in a semester with at least 12 quality hours. Courses excluded from grade-point computation also are excluded from quality hours and may not be used to determine honor roll status.

**Probation, Academic:** A student is placed on academic probation following the first regular semester in which the cumulative GPA fails to meet the minimum academic standard 2.0.

**Registrar:** The office where students' records are maintained. The registrar's office maintains student academic transcripts and coordinates course registration.

**Repeating Courses:** Students who make an F in a course can get credit only by repeating the course. Undergraduate students who want to repeat courses to improve their GPA at SFA must repeat those courses at SFA. For any course repeated at SFA, the grade earned during the most recent enrollment will be used to calculate the GPA. Credit hours for courses taken at other institutions to replace credit hours earned at SFA may be used to meet graduation credit-hour requirements but may not be used for GPA calculation.

**Six Drop Rule:** Students who enrolled in a Texas public institution of higher education for the first time in the fall 2007 or thereafter may not drop more than six courses with a "W6" grade during their undergraduate career. This number includes any course dropped at another Texas public institution but excludes full semester withdrawals and exceptions as defined in Texas law. After six drops, the student will receive the grade awarded for each attempted course.

**Suspension, Academic:** A student is placed on academic suspension after a regular semester that immediately follows a semester of probation if the student's semester GPA maintains below a 2.0.

**Syllabus:** Course outline, usually distributed the first day of class, with a brief description of the course. The syllabus generally includes assignments, exam dates, grading system, attendance policy and the faculty member's contact information.

**Transcript:** Official record of a student's academic work. It is maintained and updated each semester.

**Withdrawal from the University:** Students may drop a course or withdraw from all courses until the fifth business day prior to the first day of final exams for the appropriate part of term. A student may not drop a course or withdraw from all classes after this date. A drop or withdrawal on or before the official reporting date of the appropriate part of term will not be recorded on a student's transcript. After the official reporting date and before the last day to drop or withdraw in a part of term, a drop will be noted as a "W6" or "W" grade and a withdrawal will be noted as a "W" grade on the student's official transcript.



# CLASSROOM SUPPORT WEB-BASED SOFTWARE

## Brightspace by D2L

This learning management system is the gateway to your online courses as well as supporting materials for traditional classroom-based courses.

Brightspace is used by faculty members across campus to create and deliver course content, post grades and much more. It is integrated with the mySFA portal and a number of online learning tools, including Turnitin, LiveText, Zoom, Proctorio and YouSeeU.

It is often the platform in which you'll:

- submit assignments
- take quizzes and exams
- and receive assignment grades.

You'll hear it referred to as both Brightspace and D2L by students, faculty and staff.

Accessible via [d2l.sfasu.edu](https://d2l.sfasu.edu) or [mysfa.sfasu.edu](https://mysfa.sfasu.edu).



## Brightspace Pulse App



Brightspace Pulse is a mobile app for students that can help you stay connected and on track with your D2L coursework. It gives you one easy view of course calendars, readings, assignments,

evaluations, grades and news.

The app will help you make better decisions about how to handle your workload, when to submit assignments and when to prepare for tests. Real-time alerts will let you know when classes are canceled, rooms are moved or new grades are available.

The schedule view and weekly visualization enables you to quickly glance at what is due today, this week and upcoming across all your courses.

Download the app now in the App Store or Google Play!

- See all the important dates and deadlines for each one of your courses.
- Anticipate your busiest times with a quick glance.
- Receive the latest grades and news.
- Share updates via email, text message and social media.
- Enter your own events and deadlines.
- Edit course details and customize how much assignments and tests are worth.
- Seamlessly log in to Brightspace via your browser to complete tasks.

## Need assistance with Brightspace by D2L?

Give SFA's Brightspace support team a call at (936) 468-1919, email at [d2l@sfasu.edu](mailto:d2l@sfasu.edu), or visit them in the Steen Library, Room 210, from 8 a.m. to 5 p.m. Monday through Friday.

# Lower Your Student Debt with 15 To Finish



Taking 15-plus semester credit hours during the fall and spring semesters can help you graduate on time and save time and money.

An extra year of college could cost up to **\$69,100**

- **\$10,600** annual tuition for a full-time student  
*Texas resident*
- **\$10,900** annual room and board  
*Mid-priced residence hall*
- **\$47,600** potential lost wages  
*(Payscale.com)*

Visit with your academic advisor TODAY about 15 To Finish. Also, be sure to ask about SFA's flat-rate tuition plan, where you can take 15 or more semester credit hours for the cost of 12.



FIND OUT MORE AT  
[SFASU.EDU/STAYONTRACK](https://sfasu.edu/stayontrack).

## HOW CAN SFA HELP YOU GRADUATE ON TIME?



### DEGREE MAPS

Degree maps are course sequences students follow to help ensure the courses they need to graduate on time are available when needed.



### ADVISING

Academic advisors help students address concerns and clear issues that might cause them to detour from the degree map.



### SCHEDULING AND REGISTRATION

Registration professionals work with students to help reduce schedule conflicts. This makes it easier for students to take 15-plus credit hours per semester.



**STEPHEN F. AUSTIN  
STATE UNIVERSITY**  
NACOGDOCHES, TEXAS

# TUITION OPTIONS FOR THE 2023-24 ACADEMIC YEAR



Many full-time students **are taking credit loads that automatically put them on a five-year plan for a bachelor's degree instead of four years.** Further complicating the matter, federal financial aid policies require students to be enrolled in just 12 credits each semester to be eligible for assistance, creating the impression that 12 credits is “full time.”

## THE RESULT:

- Students **graduate later** and accrue **unnecessary time and debt** in the process.
  - SFA students are advised to enroll in 15 credits each semester (or 30 credits per year), putting them on track to graduate on time.
  - Research shows that students who take 15 credit hours **do better academically** and **are more likely to persist.**

SFA creates two options to help students afford additional courses at **no extra cost.**

## FLAT-RATE TUITION

- \$5,300 per semester; \$10,600 an academic year (\$100 course and lab fee is included)
- For any undergraduate student enrolled in 12 or more credit hours
- Fall 2023 and spring 2024 semesters only
- Flat rate applies toward 12 to 21 credit hours each semester

BOTTOM LINE:

12 credit hours  
15 credit hours  
18 credit hours  
21 credit hours



**\$5,300**  
per semester  
for fall 2023 and  
spring 2024 only

## GUARANTEED-PRICE PLAN

- \$5,675 per semester (\$100 course and lab fee is included) for first-time students in 2022-23
- Must be enrolled in 12 or more credit hours to participate
- Rate is locked in for four years for each fall and spring semester

BOTTOM LINE:

12 credit hours  
15 credit hours  
18 credit hours  
21 credit hours



**\$5,675**  
per semester up to  
four years beginning  
fall 2023

## TO DETERMINE WHICH TUITION OPTION YOU QUALIFY FOR, ANSWER THESE QUESTIONS.

### Question 1: Are you a resident of Texas?

**Yes** – Proceed to next question.

**No** – Eligible for nonresident rates or border-state rates

### Question 2: Are you a transfer student?

**Yes** – Possibly eligible for the flat-rate tuition option associated with year of high school graduation

**No** – Proceed to next question.

### Question 3: Are you a graduate student?

**Yes** – Eligible for Texas resident graduate school rates

**No** – Proceed to next question.

### Question 4: Are you a first-year, first-time student?

**Yes** – Proceed to next question.

**No** – Ineligible for Guaranteed-Price Plan, but automatically billed at the flat-rate tuition option

### Question 5: Do you qualify for tuition and/or fee exemptions related to the Hazlewood Act, etc.?

**Yes** – Ineligible for Guaranteed-Price Plan, but automatically billed at the flat-rate tuition option

**No** – Eligible to participate in the Guaranteed-Price Plan

For more information about SFA's tuition options, contact Student Business Services at (936) 468-6960 or [sbs@sfasu.edu](mailto:sbs@sfasu.edu).

# STUDENT SUCCESS CENTER

## FROM ORIENTATION TO GRADUATION

Navigating college can be difficult, which is why SFA's Student Success Center is here to help you find your way. The center comprises critical resources and programs designed to help you during your time as an SFA student.

Our focus is to serve as the university's compass for Lumberjacks. We work to ensure all students have access to necessary resources and tools to accomplish their goals as a student and after graduation. Keep reading for a brief outline of our services. For more detailed information, log on to our website at [sfasu.edu/studentsuccess](https://sfasu.edu/studentsuccess).

### Contact us:


Phone: (936) 468-5803


Fax: (936) 468-7611

Email: [studentsuccess@sfasu.edu](mailto:studentsuccess@sfasu.edu)

Web: [sfasu.edu/studentsuccess](https://sfasu.edu/studentsuccess)

Campus Location: Steen Library, Room 203

 @SFASuccess

 @sfastudentsuccesscenter

## Academic Advising for Undecided Students

The SSC provides advising services for students who have not declared an academic major. Full-time advisors are available to assist students with course selection and resources to help them explore career options. The SSC also has information on all academic majors offered at SFA.

Visit [sfasu.edu/advising](https://sfasu.edu/advising) for more information.

## Generation Jacks

Generation Jacks is a program designed for first-generation college students – meaning neither parent(s) nor guardian(s) graduated from a four-year college or university.



### Some benefits of Generation Jacks:

- *Academic Learning Community* – Three courses during the first semester and two career readiness courses during the following semester are taught exclusively with other GenJacks students by GenJacks faculty members.
- *Service Learning and Mentor Opportunities* – Students participate in community service projects and receive a peer mentor and success coach.
- *Summer Leadership Academy* – Students move in early to participate in workshops, socials, and service and leadership activities. GenJacks students also get to meet some of their faculty members and get acclimated to campus before classes begin.
- *Residential Learning Community* – One floor in Steen Hall is exclusively reserved for GenJacks students with special programming and events throughout the semester.
- Early course registration and study rooms are available.

More information about Generation Jacks can be found at [sfasu.edu/genjacks](https://sfasu.edu/genjacks).

 @GenJacks

 @SFA\_genjacks

## Peer Mentors

Peer mentors are upperclass students who have a passion for supporting other Lumberjacks. They assist students in navigating the university, becoming involved in student clubs and organizations, and providing support and guidance to each student they serve. Peer mentors help students set academic and personal goals and serve as a support system by helping students overcome various challenges. Visit [sfasu.edu/studentsuccess/136.asp](https://sfasu.edu/studentsuccess/136.asp) for more information.



## SFAS 1101 – Student Success Course

It's important for students to understand how a university works and what they need to do to be successful. Therefore, the university offers a one-credit course designed specifically for first-semester college students, as well as a section designed solely for transfer students.



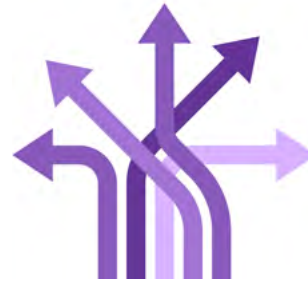
In classes of no more than 25 students, SFAS 1101 students work with an experienced SFA instructor and a successful junior or senior student. This course provides study and practice in methods for success in college, which include critical-thinking skills, study skills, time and money management, goal setting, career planning and more. Find out more at [sfasu.edu/sfas1101](https://sfasu.edu/sfas1101).

## Texas Success Initiative

The SSC serves as the campus liaison for the Texas Success Initiative. TSI is a statewide program to promote academic success for all students by ensuring they are well prepared for college-level work. To support this goal, the TSI program requires students to earn exemption from placement testing or undergo assessment in the areas of reading, writing and mathematics.

SSC staff members correspond with upward of 10,000 admitted students every year, and each semester, our advisors counsel between 400 to 800 students about developmental coursework. Find out more about TSI at [sfasu.edu/advising/111.asp](https://sfasu.edu/advising/111.asp).

## UNDECIDED ON A MAJOR?



You're not alone! Many first-year college students have not yet selected a major. Don't worry. Academic advisors in the SSC, located on the second floor of Steen Library,

will help you explore majors and select courses until you declare your major.

Contact the SSC to begin your major exploration journey and become confident in the major you choose.

(936) 468-5803  
[studentsuccess@sfasu.edu](mailto:studentsuccess@sfasu.edu)

“When people ask,  
‘what’s your major?’  
it’s just a starting  
point for conversation.

Don’t freak out if  
you’re undecided.”



# MORE ACADEMIC RESOURCES



## Join the School of Honors

Benefits include competing for exclusive scholarships, financial support for undergraduate research, study abroad trips, early registration and a designated computer lab with free printing.

Honor students also have the opportunity to live in the Lumberjack Landing Honors Wing or Wisely Hall. Lumberjack Landing is a first-year hall with modern facilities that promote an academically focused atmosphere. Wisely Hall houses all classifications in a quiet, coed living environment that challenges academically talented students through engagement and networking. Learn more at [sfasu.edu/honors/about/advantages.asp](https://sfasu.edu/honors/about/advantages.asp).

## Lumberjack Leadership Academy

Lumberjack Leadership Academy is a program intended to grow and develop student leaders while enhancing the overall college experience. The academy has a specialized SFAS 1101 with two times from which to choose.

The program emphasizes global and service leadership. In addition to attending class, the academy also requires participation in unique leadership and service opportunities. This is an official SFA class, so you must be available to attend all scheduled class sessions and complete all assigned work. Learn more at [sfasu.edu/student-life](https://sfasu.edu/student-life).

## Did you know?

- Class sizes at SFA are small, so you get lots of attention from faculty members who know your name and act as mentors (student-to-faculty ratio: 18:1).
- Approximately 98% of SFA's professors hold the highest degree in their field.

## Steen Library

The resources you need to make the grade can be found within SFA's library. The four-story facility houses various type of study spaces (group or individual) and resources (books, computer labs, etc.).

From the library's website, you can reserve a study room, utilize any of our academic research guides, explore the robust historical archives and utilize Journals@Steen to research scholarly and peer-reviewed journal articles.

Don't know where to start? Ask a librarian!

[library.sfasu.edu](https://library.sfasu.edu)



# TUTORING SERVICES

*Lumberjacks know it's a sign of strength to take advantage of available help to push through their classes.*

## Academic Assistance and Resource Center

The AARC is an award-winning program that provides free peer tutoring for entry- and upper-level courses. Tutors gladly meet students where they are, which means they offer versatile tutoring options: in-person, online, livestream, individual, group, appointment or walk-in. All tutoring sessions are led by one of our more than 150 trained and certified tutors.

Show our welcome desk staff members which of our social media accounts you follow and we'll give you a free Scantron or blue book! Just let us know which one you need.

### Types of Tutoring Offered at the AARC

**Supplemental Instruction Groups:** A student selected by the faculty member offers a second review of class material. You may attend SI Groups for courses taught by faculty members other than your own. No sign-up is required.

**Walk-In Tables:** Tutors answer questions during set hours, direct you in problem-solving and review concepts. There's no appointment needed, and

you can use walk-in tables as often as you like. Some walk-in table hours, called power hours, are for a specific subject.

**Online Writing Lab:** The OWL provides personalized reviews of undergraduate papers within 48 hours. Writing tutors check for basic sentence structure and grammar, point out up to two examples of each error type, and tell you where to find more information to improve your paper. You can access the OWL through Brightspace/D2L, which you can find in mySFA.

Visit [sfasu.edu/aarc](https://sfasu.edu/aarc) to learn more.

## Ed and Gwen Cole Student Success Center

Housed on the first floor of Lumberjack Landing, the Cole Student Success Center features helpful resources like a computer lab, whiteboards for collaboration with other students and three private study rooms. The AARC also hosts some of its supplemental instruction group meetings at the center.



Welcome to beautiful Nacogdoches!



# Loblolly Properties, LLC

A REAL ESTATE BROKERAGE FIRM

*SFA Alumni Owned and Operated*

**LoblollyNac.com**

**(936) 305 - 5500**





# lofts

## NACOGDOCHES



### FEATURES:

- Walking distance to SFA
- Fully Furnished
- Washer & Dryer
- All Bills Included
- \$30 cap on electricity\*
- Valet Living Trash
- 24-hour Emergency Maintenance

### AMENITIES:

- 24-hour Computer Lab w/FREE Printing
- 24-hour State of the Art Fitness Center
- 24-hour Community Lounge
- Resort Style Saltwater Pool
- Community BBQ Grills
- Full-size Basketball Court
- Sand Volleyball Court

**936-569-1333**  
**liveatthelofts.com**  
**1333 Pearl Street,**  
**Nacogdoches, TX 75961**





# Luxury STUDENT LIVING



**LIMITED  
AVAILABILITY!**

RENT STARTING AT  
**\$ 615.00**

## PROPERTY FEATURES



### All Bills Included

At the Overlook, ALL bills are included in your rent! Water, Electricity, and blazing fast Internet!



### Private Bathroom & Closet

Each apartment at Overlook has their very own private Bedroom, Bathroom, and Walk-in closet!



### 2 Fitness Centers

Get your sweat on with our TWO fitness centers! Our very own "Fitness on Demand" will be sure to provide an amazing workout!



### Largest Dog Park

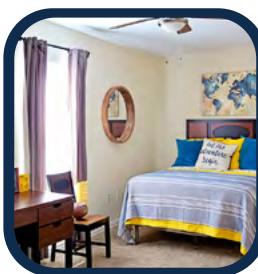
We are Pet friendly & we love our furry residents! Make them feel at home with the largest dog park in Nacogdoches!



### 2 Swimming Pools

The Overlook has TWO glistening resort style pools in two different locations on the property.

## LEASE NOW



## ABOUT PROPERTY :

The Overlook at Nacogdoches is a thriving community that the lights the way to convenient, comfortable living for residents in Nacogdoches. Conveniently located near fine dining, shops, corporate businesses, and Stephen F. Austin State University, The Overlook is perfect for anyone wanting to be close to campus or work, have 24-hour access to stellar amenities and enjoy an upgraded lifestyle. Featuring spacious 2- and 3-bedroom apartments, The Overlook's garden-style flats come fully furnished, so the only thing you need to add to the equation is yourself!



Contact Us  
**936-715-9670**

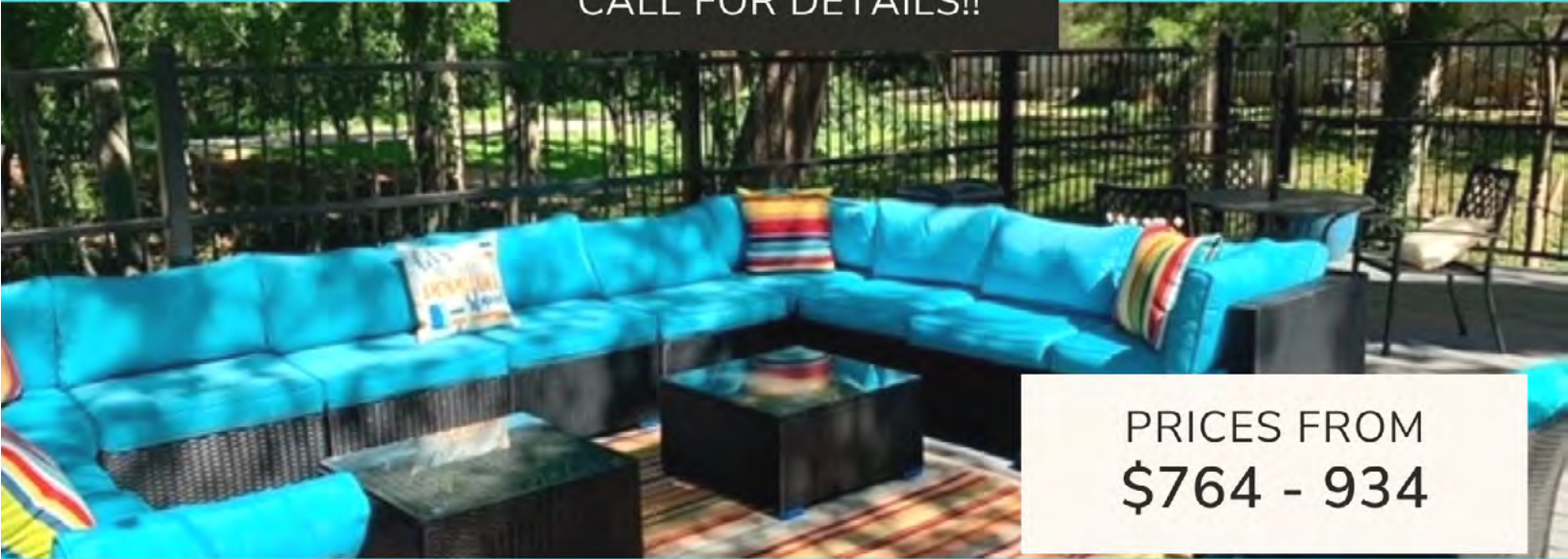
Visit Our Website  
**theoverlooknac.com**



# GET \$300 OFF RENT

5222 Northway Drive, Nacogdoches, TX 75965

CALL FOR DETAILS!!



PRICES FROM  
\$764 - 934



## ABOUT THE PROPERTY

Come discover living at its best at The Cambridge Apartments in Nacogdoches! Our homes are neatly tucked away within a breathtaking acreage featuring lush landscaping and mature trees, while remaining just minutes from SFASU!

## OUR PROPERTY FEATURES

- Living Room
- Private patios
- 1 and 2 Bedrooms
- BBQ Area
- Pet Friendly
- Swimming Pool
- Clubhouse
- Laundry Facility

936-569-6026

canbridgecourt@npmainfo.com



# CAMPUS LIVING AND DINING

SLEEP. EAT. ATTEND CLASSES.  
EAT. NAP. STUDY. EAT. STUDY.  
AND REPEAT.



## Baker Pattillo Student Center

Your hub away from home because there's so much to do here! Take in a movie at the 383-seat multilevel theater, grab a cup of coffee at Starbucks, sit down for pizza, smoothies, ice cream and more and just visit with friends or study in one of the many lounge areas.



# OTHER PLACES INSIDE THE STUDENT CENTER



## Campus Post Office

Located in the basement of the Baker Pattillo Student Center, the post office provides full U.S. postal services to all members of the Lumberjack community. With more than 10,000 boxes, box rental is required for students who live on campus and is available for students residing off campus.



## Barnes & Noble Bookstore

The Barnes & Noble Bookstore, located in the Baker Pattillo Student Center, sells new and used textbooks and supplies you'll need for class. In addition, you can shop for licensed SFA clothing and other items, including spiral notebooks, pens, Scantrons and blue books.



## Graphic Shop and Student ID Cards

Located on the first floor of the student center, the Graphic Shop offers services to all SFA faculty, staff, organizations and students to produce a variety of high-quality printed materials for a fee. The Graphic Shop also is the place to take your picture for your official student ID card.



# LIVING ON CAMPUS: RESIDENCE LIFE

SFA's on-campus living requirement, which stipulates that students who are younger than 21 and have earned fewer than 60 credit hours must reside and dine on campus, is designed to provide a supportive environment and aid in student success.

Thousands of Lumberjacks have opted to live in one of our 11 residence halls this fall, and we are so excited to welcome them! First-year students reside in the First-Year Commons, which include:



## **HALL 14:**

Coed / Shared Room / Community Bathroom



## **KERR HALL:**

Female / Shared Room / Community Bathroom



## **LUMBERJACK LANDING:**

Coed / Shared Room / Suite Bathroom



## **LUMBERJACK VILLAGE:**

Coed / Shared and Private Rooms / Suite Bathroom



## **STEEN HALL:**

Coed / Shared Room / Suite Bathroom



## **WISELY HALL (HONORS):**

Coed / Shared Room / Community and Suite Bathrooms

Residence Life Contact Information

Location: Rusk Building, Room 332  
Website: sfasu.edu/reslife  
Email: reslife@sfasu.edu  
Phone: (936) 468-2601  
Fax: (936) 468-2074  
Follow Residence Life on Instagram! @sfa\_reslife

Residence Hall Association

Dedicated to providing all students living on campus with a positive experience, the RHA encourages residents to make positive contributions and become leaders within each of the residence hall communities.

Through its hall council and executive board, residents have a voice in suggesting programs and improvements. Residents are encouraged to join committees and provide input on food service, community service, sustainability, sports and recreation, policies and procedures, and fundraising.

RHA also hosts many campuswide programs, like Casino Night, Fall Fest and Holiday Extravaganza. These programs bring students together for fun and networking.

Residence Hall Front Desk Phone Numbers

First-year halls

Hall 14.....	(936) 468-4609
Kerr Hall.....	(936) 468-5301
Lumberjack Landing.....	(936) 468-5404
Lumberjack Village.....	(936) 468-4300
Steen Hall.....	(936) 468-5201
Wisely Hall (honors).....	(936) 468-2600

Non-first-year halls

Griffith Hall.....	(936) 468-4909
Hall 20.....	(936) 468-2595
Kerr Hall.....	(936) 468-5301
Lumberjack Lodge.....	(936) 468-2400
Lumberjack Village.....	(936) 468-4300
Wisely Hall (honors).....	(936) 468-2600

First-Year Living Learning Communities

Think of Living Learning Communities as an inside connection to friendships, fun and the kind of support that can help you be a successful student for no additional cost.

When you sign up for a Living Learning Community, we give you priority selection to live with other students who have signed up for the same experience, direct mentorship with faculty and staff, and an upperclass student mentor to support you while living and learning at SFA. Each community has its own group-defined goals and events.

LLCs include:

- Education studies
- Esports
- Fine arts
- Generation Jacks
- Human sciences
- Honors
- Natural resource management
- Pre-nursing
- Rusche Business

Learn more at sfasu.edu/reslife by clicking on "Living Learning Communities."



Twigg, a local celebrity featured on KETK in Tyler, lives his best life on campus eating sunflower seeds near the Ferguson Building. Follow @SFA\_Twigg on Instagram and Twitter.

# RESIDENCE LIFE CHECKLIST

The following items are mostly suggestions. You are not required to bring everything on this list. Discuss with your roommate what each of you will bring to campus.

*\*Dimensions on Page 24*

## ITEMS ALREADY IN YOUR ROOM

- ☐ Bed frame\*
- ☐ Closet\*
- ☐ Desk\*
- ☐ Dresser\*
- ☐ Mattress\*
- ☐ Mirror

## HEALTHY LIVING ITEMS

- ☐ Cleaning supplies (recommended list at [epa.gov](https://www.epa.gov))
- ☐ Extra month supply of prescriptions (if applicable)
- ☐ Hand sanitizer (alcohol based, 60% or more)
- ☐ Resources to help complete classes remotely (if needed)
- ☐ Thermometer

## FOR YOUR BED

- ☐ Bedspread, comforter or blankets
- ☐ Mattress pad
- ☐ Pillows and pillowcases
- ☐ Sheets

## FOR YOUR BATH

- ☐ Bathrobe
- ☐ Brushes, combs and hair accessories
- ☐ First-aid kit
- ☐ Hair dryer, curling or flat iron
- ☐ Prescribed medications, prescriptions for renewal
- ☐ Shower caddy or tote
- ☐ Shower shoes or flip-flops
- ☐ Soap, body wash, shampoo and conditioner
- ☐ Toothpaste, toothbrush and dental floss
- ☐ Towels and washcloths

## FOR YOUR ROOM

- ☐ Blender
- ☐ Broom and dust pan, small vacuum
- ☐ Carpet or rug, curtains
- ☐ Clock
- ☐ Coffee pot (one per room)
- ☐ Dishes and cups
- ☐ Dish soap
- ☐ Flashlight and batteries
- ☐ Reusable water bottle
- ☐ Storage caddy or under-the-bed bins
- ☐ Toolkit (small)
- ☐ Trash can and bags
- ☐ Travel mug

## FOR LAUNDRY

- ☐ Clothes hangers
- ☐ Dryer, fabric softener sheets
- ☐ Drying rack/hanger
- ☐ Iron
- ☐ Laundry basket
- ☐ Lint roller
- ☐ Liquid detergent/pods
- ☐ Sewing kit

## ELECTRONICS

- ☐ Cellphone and charger
- ☐ Computer or laptop with charger
- ☐ Desk or floor lamp (no halogen lamps allowed)
- ☐ DVD/Blu-ray player
- ☐ Gaming system/console
- ☐ Headphones and/or earbuds
- ☐ Surge protector (NRTL-approved only)
- ☐ TV (only one TV cable port per room)

## SCHOOL SUPPLIES

- ☐ Backpack or tote
- ☐ Calculator
- ☐ Desk supplies (stapler, tape, sticky notes, etc.)
- ☐ Notebooks, folders, pens, pencils, highlighters

## FOR OUTDOORS

- ☐ Anti-itch cream
- ☐ Bicycle, lock and helmet
- ☐ Bug spray
- ☐ Rain gear (coat and boots)
- ☐ Sunscreen
- ☐ Sunglasses
- ☐ Swimming suit, goggles, nose plug
- ☐ Umbrella

## CARRY WITH YOU OR KEEP IN LOCKING AREA

- ☐ Debit card, credit card(s)
- ☐ Driver's license, car registration, proof of insurance
- ☐ Health insurance card
- ☐ Passport or other state ID
- ☐ Student ID

## DECORATING YOUR ROOM

Use only approved products to hang posters and other decorations in your room.

### APPROVED products:

- ☐ Adhesive strips
- ☐ Painters tape, clear tape, double-sided tape
- ☐ Poster tacky

### BANNED products:

- Anything that will leave a hole in the wall
- Nails
- Push pins
- Tacks



## PROHIBITED ITEMS

- Alcoholic beverages and alcohol-labeled containers (Learn more on [Page 66.](#))
- Barbecue grills and sandwich makers
- Candles, oil lamps and other open-flame sources
- Controlled substances, drugs and drug paraphernalia
- Crock-Pot or hot plate (does not include coffee pot)
- Fireworks and explosives
- Incense and oil/wax scent diffusers, plug-ins, etc.
- Lighter fluid
- Multiplug adapters
- Pets: Exceptions include fish in a 10-gallon tank (or less) and small birds. Support and service animals must be approved prior to arrival via special accommodations.
- Portable heater or air conditioner
- Road, street and traffic signs
- Twinkle lights or string lights (battery operated also not allowed)
- Weapons of any kind, including toy weapons
- Wi-Fi router

**TIP:** Bring a dolly or cart for move-in day!



SFA Dance Marathon, a student-led event, has raised **\$119,568.78** for Children's Miracle Network during the past six years.

# DIMENSIONS FOR FIRST-YEAR HALLS

	HALL 14	KERR HALL	LUMBERJACK LANDING	LUMBERJACK VILLAGE #2 TWO-BEDROOM QUAD (TWO TO A ROOM)	STEEN HALL
ROOM SIZE	12' x 15'	11' x 15'	14' x 25'	665 sq. ft.	12' x 22'
BED	Twin mattress 39" x 75" 1' to 3' from floor	Twin mattress 39" x 75" 1' to 3' from floor	XL twin mattress 39" x 80" 1' to 3' from floor	Twin mattress 39" x 75" 1' to 3' from floor	XL twin (loft style) mattress 39" x 80" 2'4" to 4'10" from floor
CLOSET	Rod-to-floor: 66" Shelf-to-ceiling: 1'8" 3'6"W x 7'4"H x 2'2"D	Rod-to-floor: 66" Rod-to-ceiling: 1'8" 3'6"W x 7'2"H x 2'D	Rod-to-floor: 41" and 80" Shelf-to-ceiling: 1'4" 3'8"W x 8'H x 2'2"D	Rod-to-floor: 50" Shelf-to-ceiling: 58" 6"W x 108"H x 22"D	Wardrobe Shelf-to-top: 1' (Steen East): 2'6"W x 6'H x 2'D (Steen West): 2'10"W x 4'5"H x 1'10"D
DRESSER	Freestanding with three drawers 2'5"W x 2'6"H x 2'D Built-in with five drawers 2'W x 4'H x 1'6"D	Freestanding with three drawers 2'5"W x 2'6"H x 2'D Built-in with six drawers 1'10"W x 4'H x 1'3"D	Freestanding with three drawers 2'W x 2'6"H x 2'2"D	Freestanding with three drawers and one pull-out shelf on rollers 36"W x 30"H x 24"D	Freestanding with three drawers 2'5"W x 2'6"H x 2'D
DESK	Built-in with two drawers 3'10"W x 2'6"H x 2'D	Built-in with two drawers 2'6"W x 2'6"H x 2'D	Freestanding with no drawers and one pull-out shelf 2'W x 2'6"H x 2'6"D	Freestanding with no drawers and one pull-out shelf 32"W x 30"H x 24"D	Freestanding with no drawers and one pull-out shelf 2'8"W x 2'6"H x 2'D
LOCKING AREA	Lock on closet door	Lock on closet door	Hasp lock on nightstand	Hasp lock on dresser	Steen East: Hasp lock on dresser Steen West: Hasp lock on nightstand
WINDOW	47"H x 64"W	48"H x 64"W	First floor: 54.5"W x 78.5"H Second to fourth floors: 54.5"W x 62.5"H	70.25"W x 34.5"H	72"H x 35"W
OTHER FURNITURE	Built-in bookshelf above desk with three shelves 2'10"W x 3'11"H x 10"D	Built-in bookshelf above desk with three shelves 3'W x 9"H x 10"D	Nightstand with one cabinet, one drawer and one pull-out shelf 2'W x 2'6"H x 1'5"D	N/A	Steen East: N/A Steen West: nightstand 1'5"W x 2'6"H x 2'D

# DINING ON CAMPUS

## LUMBERJACK EATS

SFA's Dining Services offers meals to please everyone's taste buds. From all-you-care-to-eat dining locations in the Baker Pattillo Student Center and Eatery on East to the fantastic tastes of Chick-fil-A, Starbucks and other retail outlets, you'll have tons

of choices to calm your stomach's growl. SFA also has a registered dietitian on staff to help you plan meals and maintain a healthy lifestyle. For more information, email [LumberjackEats@sfasu.edu](mailto:LumberjackEats@sfasu.edu) or visit [dineoncampus.com/sfa](http://dineoncampus.com/sfa).

### Dining Options Located in the Student Center

#### Main Dining Hall



### Located on East College Street Across from Steen Hall

#### Main Dining Hall



### Located in the Steen Library



# BAPTIST STUDENT MINISTRY

---



[www.sfabsm.org](http://www.sfabsm.org)





# NobiliTea



## TEA = POSITIVITEA

NobiliTea is the largest provider of loose leaf tea, with over 70 blends and endless combinations. We also offer our own signature line of boba, organic sugar, sugar free enhancers, and let's not forget our signature line of chai products.

NobiliTea  
**popping boba**  
*bursting with flavor!*





# DEAN OF STUDENTS OFFICE

## SUPPORTING THE HEALTH AND WELL-BEING OF EVERY LUMBERJACK

The focus of the Dean of Students Office is student wellness and well-being. This focus is served through five distinct areas: Student Outreach and Support, Student Conduct, Campus Recreation, Counseling Services, Student Wellness and Health Services. Our entire team is dedicated to serving students and doing everything we can to help students be successful.

### Campus Recreation

Campus Recreation offers programs and services to engage students in developing and taking care of their physical, social and mental wellbeing. There's a climbing wall, outdoor pool with a lazy river, sand volleyball, basketball and racquetball courts, an indoor jogging track, and thousands of square feet devoted to cardio and exercise equipment. Additionally, students can select from a variety of group fitness classes, outdoor pursuits, intramurals and sport clubs.

Visit [sfasu.edu/campusrec](https://sfasu.edu/campusrec) to learn more.

### Counseling Services

Counseling services is staffed with licensed professional counselors and offers individual and group mental health counseling to SFA students. Counseling helps students overcome personal and academic obstacles and make healthy, productive decisions. This service is free and confidential.

Visit [sfasu.edu/counselingservices](https://sfasu.edu/counselingservices) to learn more.

### Student Conduct

Student Conduct facilitates a positive and safe environment for student learning and to foster a university community based on the core values of integrity, civility, honesty, respect and accountability.

### Student Outreach and Support

Student Outreach and Support focuses on connecting students in need of assistance to the extensive network of resources and support services on and off campus. Student Outreach and Support (SOS) staff members are trained to match you with the targeted services and programs to meet your needs. Intervention tracks comprise of behavioral/medical, attendance issues and academic performance.

### Student Wellness and Health Services

Student Wellness and Health Services is dedicated to advancing the health and well-being of our students. With a focus on providing a comprehensive health education programs, this area includes alcohol and drug prevention programs, peer health education, and other wellness initiatives.

Visit [sfasu.edu/healthservices](https://sfasu.edu/healthservices) to learn more.

# LUMBERJACK WELLNESS NETWORK

MAKING HEALTHY CHOICES  
TO MAINTAIN BALANCE IN  
ALL DIMENSIONS OF LIFE.



Housed within the Dean of Students Office, the Lumberjack Wellness Network comprises faculty and staff who feel passionate about removing the stigma around mental health.

Through iCare Ambassadors and a network of campus offices, we re-imagine the ways in which our community works to combat mental health issues among our students.

LWN educates the SFA community on mental health issues. We empower faculty and staff to have meaningful and helpful conversations with students in need. We equip you with tools, resources, and appropriate recommendations and referrals so you're connected to the help you need.

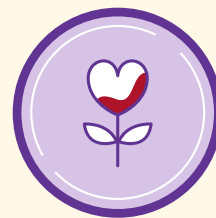
The website includes information on the dimensions of wellness, more than 50 areas of common student needs listed in the A-Z concerns, and resources to refer students for help.

Visit [sfasu.edu/lwn](https://sfasu.edu/lwn) to learn more about this network of resources.

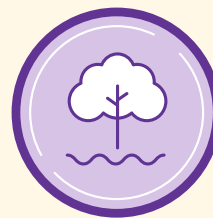
SEVEN  
DIMENSIONS OF  
WELLNESS  
CLICK ON EACH GRAPHIC  
TO LEARN MORE!



**Career and  
financial**



**Emotional**



**Environmental**



**Intellectual**



**Physical**



**Socio-cultural**



**Spiritual**

# HEALTH AND WELLNESS HUB

The Health and Wellness Hub offers comprehensive services that treat the whole person – mind, body and spirit. All services are located within the Health and Wellness Hub, at the corner of East College and Raguet Streets. For questions, contact (936) 468-4008 or [thehub@sfasu.edu](mailto:thehub@sfasu.edu).

## Health Services

Health Services is an outpatient medical facility offering preventative care and other services you may receive with your local physician. All currently enrolled students are eligible to utilize Health Services.

### HOURS OF OPERATION:

8 a.m. to 5 p.m. Monday through Friday  
For emergencies, dial 911.

[sfasu.edu/healthservices](https://sfasu.edu/healthservices)

## Counseling Services

Our counselors help students identify goals and potential solutions to problems that cause distress, leading to improved self-esteem and increased coping skills, social connectedness and optimal mental health.

Professional counseling is offered in a variety of forms, including individual, group, couples and families, roommate mediation and suicide prevention training.

These services are brief interventions with the focus on individualized care. Available to current SFA students, our services are free, confidential and delivered in person and via a telehealth platform. Visit [sfasu.edu/counseling](https://sfasu.edu/counseling) or call (936) 468-2401 for more information.

## Food Pantry

The Lumberjack Food Pantry is open 8 a.m. to 5 p.m. Monday through Friday to SFA students who are experiencing food insecurity. The Lumberjack Food Pantry uses PantrySoft, an online platform that allows you to shop online for the food you need. To receive food, you must first [register online](#).

## Student Outreach and Support

The Student Outreach and Support office promotes student success and retention, reduces risk and enhances the overall community well-being of students by connecting students in need of assistance to the extensive network of resources and support services located on and off campus. SOS staff members help students identify barriers, leverage resources and foster self-efficacy.

If there is a concern for a student, please contact Student Outreach and Support staff at (936) 468-4008 or [icare@sfasu.edu](mailto:icare@sfasu.edu).

## Student Wellness

The Student Wellness office offers Wellness Coaching to all SFA students! Wellness coaching has the potential to improve your overall well-being and success at SFA. It leverages your strengths and what motivates you to support behavior change through a collaborative, non-judgmental partnership. This free service could be a good fit if you are considering:

- Making changes to optimize your personal health and well-being
- Looking to positively shift aspects of your life
- Feeling stuck and would like to work through barriers to achievement and well-being

Ready to begin? Sign up to meet with a wellness coach by completing an intake form found under the "Ready to Begin" section at [gosfa.com/wellnesscoaching](https://gosfa.com/wellnesscoaching).



## The SFA Way

Lumberjacks believe in doing things "The SFA Way," and we strive for personal excellence in everything we undertake.

The five root principles (Respect, Caring, Responsibility, Unity and Integrity) serve as the Lumberjack standard.



According to student leaders, 90% say cocurricular experiences have helped them understand what they are learning in the classroom.

# THE SFA WAY

## RESPECT

Lumberjacks command respect and treat others with respect • They are considerate of others and tolerant of differences • They demonstrate respect for those around them by avoiding the use of offensive or profane language • They do not threaten or harm anyone and deal peacefully and civilly with conflict.

## CARING

Lumberjacks think of the needs of others and seek to improve the quality of life of those around them • They are compassionate, empathic and kind • They respond with humility to those they have helped and freely express gratitude to those who help them • Lumberjacks prepare themselves to become leaders in their communities and workplaces • They dedicate themselves to excellence in their chosen field of study and to using what they learn in the service of others.

## RESPONSIBILITY

Lumberjacks do what is right • They persevere in times of adversity • Through self-control and self-discipline, they strive to do their best • Lumberjacks challenge each other to exceed expectations • They are active learners both inside and outside of the classroom • They are reliable; they do what they say they will do • Lumberjacks hold themselves accountable for their decisions.

## UNITY

Lumberjacks are loyal to their friends, family, university, state and country • Lumberjacks stand together against any adversary • They recognize that though we are very different from one another, we are united by the Lumberjack Spirit. Lumberjacks seek to understand the people and world around them • When one Lumberjack fails, all fail • When one Lumberjack succeeds, all succeed.

## INTEGRITY

Lumberjacks have the courage to do what is right, even when it is hard or unpopular • They respond to each situation with steadfast values that are not subject to change based on the actions of others • They seek opportunities to practice effective and ethical leadership • Lumberjacks are honest; they do not deceive, cheat or steal • Lumberjacks stand up for those who cannot stand up for themselves • As lifelong learners, Lumberjacks are committed to continuously improving themselves.

# ATTENTION STUDENTS



## The Office of Title IX would like to welcome our new Lumberjacks!

We know you will love SFA as much as we do.

Part of our commitment to enhancing knowledge and providing you a memorable experience includes the following online training resource to help make you aware of issues relevant to college students. Through this training, you will learn about campus resources, as well as ways to respond to and reduce the risk of sexual violence.



## Voices for Change

*Online training that includes information about:*

- healthy relationships
- sexual violence
- alcohol abuse prevention
- sexual health
- bystander intervention
- and campus and community resources.

## TO ACCESS THE TRAINING:

1. Log in to your mySFA account.
2. Look for the "Student Training" section on the right, and click on the red link.

**Required training should be completed by Aug. 26.**

For more information, visit [sfasu.edu/lcc](https://sfasu.edu/lcc) or email [oedicompliance@sfasu.edu](mailto:oedicompliance@sfasu.edu).



# PUT YOUR BEST SMILE FORWARD!

COSMETIC DENTISTRY | DENTAL IMPLANTS  
ORTHODONTICS | TEETH WHITENING



**nacogdoches dental**  
COSMETIC AND FAMILY DENTISTRY

4703 NE Stallings | [nacdental.com](http://nacdental.com) | 936.560.0698

Brent A. Stephens, DDS





SFA WESLEY FOUNDATION



SFAWESLEY



SFAWESLEY

# SFA WESLEY FOUNDATION CAMPUS MINISTRY

.....  
Wednesday's  
6 PM Dinner | 7 PM Worship  
129 E. College Street (across from the music building)  
.....

**OPEN 7 AM - 11 PM EACH DAY**

**SFAWESLEY.ORG**





# STUDENT LIFE

SO MANY FUN THINGS TO DO!  
THANK GOODNESS YOU HAVE  
FOUR YEARS TO ENJOY IT ALL.

(936) 468-3703

[sfasu.edu/studentlife](https://sfasu.edu/studentlife)

Instagram @sfastudentlife

TikTok @sfastudentlife

Facebook SFA Student Life

SFA's Student Life office is dedicated to providing programs that enrich student involvement, leadership, engagement and fun. From leadership and volunteerism to the annual Homecoming bonfire and concert, there's an avenue for every Lumberjack to enjoy. Some of the areas housed within the division include:

- AXEperience
- Center for Career and Professional Development
- Orientation and Transition Programs
- Student Engagement Programs
- Student Government Association
- Student Publications

For more information about student life and the programs offered, visit [sfasu.edu/studentaffairs](https://sfasu.edu/studentaffairs).



## Center for Career and Professional Development

As a student, you will collect different opportunities and learning experiences through each class you take, group project, student organization, part-time job, internship or volunteer role. The CCPD is here to help students connect all those experiences and build on them as part of your professional development.

The CCPD team helps all students and alumni with career coaching and exploration; résumé and professional document creation or edits; job searching through our online job platform, Handshake; practice interviews; and hosting career fairs for part-time, internships and full-time work. We also have a Career Closet where students can borrow free professional clothing (suits, dresses, blazers, ties, shoes, etc.) for any professional event needs.

[sfasu.edu/ccpd](https://sfasu.edu/ccpd) | [ccpd@sfasu.edu](mailto:ccpd@sfasu.edu)  
(936) 468-3305 | [sfasu.joinhandshake.com](https://sfasu.joinhandshake.com)  
Baker Pattillo Student Center, third floor

# CENTER FOR CAREER AND PROFESSIONAL DEVELOPMENT

[sfasu.edu/CCPD](https://sfasu.edu/CCPD) • [ccpd@sfasu.edu](mailto:ccpd@sfasu.edu) • (936) 468-3305 • BPSC, Third Floor



## FOUR-YEAR CAREER DEVELOPMENT GUIDE



### FOR PARENTS

#### FIRST YEAR

- ☐ Begin the transition by shifting your role as a parent to that of a supporter. Encourage your student to make good grades and meet with their faculty members at least once a semester.
- ☐ Talk with your student about getting involved through a student organization, part-time job or volunteering.
- ☐ Encourage your student to use the four-year career development plan.

#### SECOND YEAR

- ☐ Talk with your student about career exploration or a desired major/minor and encourage research in different areas of interest.
- ☐ Listen to what your student is talking about concerning a career and major choice.
- ☐ Strongly encourage your student to utilize CCPD for career coaching, résumé critiques and career fairs.
- ☐ Remind your student about looking into internship/externship opportunities, as well as part-time jobs related to their field.

#### THIRD YEAR

- ☐ Urge your student to foster meaningful and supportive relationships with faculty members and key administrators on campus.
- ☐ Encourage your student to get involved in activities that will enhance their academic experience and make them more marketable, such as a leadership role in an organization or service-learning projects.
- ☐ Strongly recommend that your student utilizes CCPD for career fairs, job-search skills, résumé critiques and mock interviews.
- ☐ Highly recommend attending career fairs and other career-related events in order to establish a professional brand, narrow prospective employers, and increase your student's network and job opportunities. Remind your student about looking into internship opportunities, as well as part-time jobs related to their field.
- ☐ Advise your student to be aware of their online presence and to clean up social media accounts for viewing by prospective employers.

#### FOURTH YEAR

- ☐ Encourage/assist your student in purchasing professional attire.
- ☐ If on a graduate school track, remind your student to take appropriate entrance exams, request letters of recommendation, apply for scholarships and complete applications before deadline.
- ☐ Remember this can be a stressful and overwhelming time of change for your student. Encourage them to start the full-time career search process early their senior year and to visit the CCPD for assistance.

### FOR STUDENTS

#### FIRST YEAR: EXPLORE

- ☐ Meet with a career coach to discuss your major/minor, career goals, and to research career opportunities.
- ☐ Get involved! Join a student organization, obtain a part-time job and/or volunteer for a service project.
- ☐ Transition your high school résumé to a college one. Visit our website for résumé writing tips and tools.
- ☐ Attend career fairs for internship and volunteer opportunities.

#### SECOND YEAR: EXPERIMENT

- ☐ "Reality test" your career options with internships, externships, job shadowing, volunteering and part-time employment.
- ☐ Build on your "living" résumé and develop relationships with faculty and staff.
- ☐ Attend career fairs to build your network, learn about occupations and employers in your field of interest, and find out what skill set employers are seeking.
- ☐ Meet with your career coach to solidify a major, and meet with your academic advisor to make it official.

#### THIRD YEAR: EXPERIENCE

- ☐ Reassess your career goals, consider alternative career plans, and monitor your academic progress.
- ☐ Take a leadership role in organizations to develop teamwork, leadership and interpersonal skills.
- ☐ Utilize CCPD for help with resume edits, mock interview practice, and using Handshake for internship and job openings and information.
- ☐ Continue to update your résumé and fine tune your job-search skills by visiting our website for tips and tools.

#### FOURTH YEAR: EXCEL

- ☐ Prioritize the full-time employment search, which can take longer than you might think, by utilizing Handshake, the CCPD's online job platform, along with other online job search resources.
- ☐ Attend career fairs to establish your brand, identify and target employment opportunities, and refine your job-search skills.
- ☐ Polish your professional image by updating your résumé and applying for jobs, purchasing professional attire and cleaning up your social media accounts.
- ☐ Seek the help of your network, to include faculty/staff mentors.

### FOLLOW US @SFACCPD



## Orientation and Transition Programs

Incoming first-year and transfer students take part in sessions hosted by this office that help integrate them into the SFA community. Orientation staff members coordinate Weeks of Welcome and Family Weekend.



### Weeks of Welcome

Starting the first two weeks of the fall and spring semesters, Weeks of Welcome is your opportunity

to involve yourself on campus and meet other Lumberjacks. From the massive group class photo to barbecues and pool parties, Weeks of Welcome is nothing but fun!



Do you need help finding classes? During your first few days of in-person classes, you can stop by Surfin' Steve between 8:30 and 11 a.m. and receive directions to help you get to class on time.

## Student Government Association

The SGA is administered entirely by SFA students. Its purpose is threefold: to be the voice of the student body, to serve as a model government (with its executive, legislative and judicial branches) and to foster leadership development.



The association introduces legislation on behalf of students, and while it does not pass legislation that is binding to university policy, it does have a significant influence.

## Student Publications

Publishing online during the fall and spring semesters, The Pine Log is SFA's independent student newspaper and is accessible at [thepinelog.com](http://thepinelog.com). Occasionally, The Pine Log also prints special editions, including the annual summer Welcome Edition, which are available on newsstands throughout campus. Additionally, the Stone Fort is SFA's award-winning yearbook. Yearbook subscriptions may be purchased during Lumberjack Orientation. To get involved with SFA Student Publications, email [pinelog@sfasu.edu](mailto:pinelog@sfasu.edu).

**Welcome to SFA TEXAS**

**FAMILY WEEKEND SEPT. 22-24**

PRESENTED BY ORIENTATION AND TRANSITION PROGRAMS

# STUDENT ENGAGEMENT PROGRAMS

## AXEperience

This spirited group of student leaders hosts activities throughout the year that educate Lumberjacks about the rich traditions and history of our university. They also are responsible for coordinating and leading Jacks Charge, Holler @ Homer and Homecoming. Learn more about a few of our traditions on Pages 34-35.

@sfaaxeperience

## Clubs and Organizations

One of the best ways to make friends and connect with SFA is to join a club or organization. SFA offers more than 200! Whether you desire to unite in the brotherhood or sisterhood of a fraternity or sorority or become part of a club designed to help community members, there's a group just for you.

Getting involved also is proven to help raise your GPA and increase your chances of graduating on time.

The university's clubs and organizations focus on the following areas:

- Academic/professional
- Cultural
- Fraternity and sorority life
- Religious
- Service
- Special interests/hobbies

For a complete listing of SFA's student organizations and information about each one, visit [sfasu.edu/organizations](https://sfasu.edu/organizations).

## Fraternity and Sorority Life

With more than 30 different chapters at SFA, fraternities and sororities provide students with opportunities to build friendships, serve the community and challenge themselves in a supportive environment. Through their involvement, students can learn new skills and prepare for their future. Every fraternity and sorority member strives to live the SFA Way.

## Leadership and Service

The Jacks Give Back Initiative offers students several ways to enhance leadership skills and give back to the local community and beyond. Opportunities include alternative spring break, large service day events, a children's health movement and monthly service projects.

## Student Activities Association

SAA is your source for free or low-cost entertainment. It provides a wide variety of activities for students throughout the year. SAA hosts events like comedy shows, concerts, speakers, game shows and DIY events. Students involved in SAA have the opportunity to learn about event planning, develop their leadership skills and learn how to be part of a team.



# JUST A FEW LUMBERJACK TRADITIONS

## TOP 10

HOMECOMING  
WEEKEND

THE BIG DIP

DECORATING  
AXE HANDLES

HOMECOMING  
BONFIRE

JACKS  
CHARGE

THE BIG  
EVENT

BATTLE  
OF THE  
PINEY  
WOODS

SPRINGFEST

WATERMELON  
BASH

HOLLER @  
HOMER



### Homecoming Weekend

Usually held in October, Homecoming unites the Lumberjack community. From near and far, alumni come “home” to SFA to take part in the traditional bonfire, pep rally, downtown parade, tailgating, football game and much more. The night of the bonfire, attendees are treated to a free live concert. Past entertainment has included Walker Hayes, Jesse McCartney and 3OH!3.



### The Big Dip

The SFA Alumni Association’s The Big Dip ring ceremony is one of the final steps to becoming an SFA graduate. Students get their hand dipped in purple dye before receiving their official SFA ring.

## SAVE A LUMBERJACK. USE A COMMA.

**Axe 'em Jacks!**  
No comma means  
axing our own Lumberjacks (No!)

**Axe 'em, Jacks!**  
With a comma means  
axing our opponent (Yes!)



### Axe Handles

All new students can receive an axe handle at Holler @ Homer to personalize with their own representation of Lumberjack spirit. Students can be seen (and heard) banging axe handles on the bleachers at SFA football games.

### Jacks Charge

Bring your axe handle and lead the Lumberjack football team onto the field before the first home game. Wear your purple and white and meet at the SFA Spirit Rock (near Hall 20) 23 minutes (in honor of SFA opening its doors in 1923) before the first game. First-year students are highlighted in the first Jacks Charge of the season.



### Purple Haze Student Section

The official student section of SFA where all Lumberjacks come to cheer and show their school spirit. Purple Haze students pride themselves on being the loudest and proudest student fans. Students attend home sporting events and sit in the reserved student section wearing as much purple as possible. Jackhammers, known as the Purple Haze student leaders, are the "heartbeat" of the student section. They wear overalls and cheer as loud as they can for the Lumberjacks.

### Springfest

Closing out the year is the last campus party of the spring semester. Springfest is sponsored by the Student Activities Association and features music, games, free food, prizes and free "stuff." Springfest is usually held at the end of April.



### Watermelon Bash

The Student Government Association hosts the annual Watermelon Bash during fall's Weeks of Welcome. The event is free and is SGA's oldest-standing tradition.

*Greetings  
from ...*

# WEEKS OF WELCOME



STUDENT AFFAIRS PROGRAMS



#getinvolved

*Aug. 25 - Sept. 9*

WoW is designed to welcome new students to campus and introduce them to campus life. For returning students, it offers a way to become involved and interact with new students and campus organizations. WoW programming takes place the first two weeks of every fall and spring semester.

## CONTACT US:



Baker Pattillo Student Center  
Room 3.300



(936) 468-6641

## FOLLOW US:



[facebook.com/SFAWOW](https://facebook.com/SFAWOW)



[@sfawow](https://www.instagram.com/sfawow)



[@sfa\\_wow](https://twitter.com/sfa_wow)

# ATHLETICS AND SPIRIT TEAMS

## NCAA Division I Athletics

SFA is an NCAA Division I program competing in the Western Athletic Conference. SFA sponsors 18 intercollegiate sports. Men's sports include football, basketball, baseball, cross-country, indoor-outdoor track and field, and golf.

Women's sports include soccer, volleyball, beach volleyball, cross-country, basketball, indoor-outdoor track and field, softball, golf, tennis and bowling.

Bring your student ID to enter all home games for free. For schedules, rosters and the latest sports news, visit [sfajacks.com](https://sfajacks.com).

@SFA\_Athletics

@SFA Athletics

WatchESPN app



## Cheer & Dance Teams

The SFA cheerleading and dance teams work to increase the overall spirit of the campus community by performing and cheering at SFA events and serving as ambassadors and role models. Together, the teams have won an amazing 35 national championships since 1993.



## Ol' Cotton Cannon

When you attend SFA home football games, you had better bring earplugs. Each time the Lumberjacks score, Ol' Cotton, a World War II-era cannon named after Ret. Lt. Gen. Orren R. "Cotton" Whiddon, the most senior military officer ever to graduate from SFA, is fired by the Lumberjack Battalion's cannon crew.



## Purple Lights

To help notify the SFA community of an athletic victory, purple lights have been installed on top of the Steen Hall towers and in the Baker Pattillo Student Center clock. If you're unable to attend a game, just look to the sky, and when the lights are shining, you can rejoice! Axe 'em!

# ARMY ROTC

*BE THE BEST*



**STEPHEN F. AUSTIN  
STATE UNIVERSITY**  
Military Science

SFA's Army ROTC is a world-class practical leadership experience, and can be a part of your curriculum. Upon graduation, you will commission as a Second Lieutenant in the United States Army, Army Reserve, or Army National Guard. SFA's Department of Military Science has provided more than 700 commissioned officers.

You will have the opportunity to lead soldiers at home and around the globe in a multitude of career field options.

**Ask us what careers are possible!**

## **Requirements:**

- Three to four credit hours of military science classes per semester
- Physical training three days per week
- One to two overnight field training exercises per semester

Scan the QR code to learn more.



[www.spiritoutfittersusa.com](http://www.spiritoutfittersusa.com)



*We Do...*

**T-SHIRTS**

**SILKSCREEN PRINTING & GRAPHIC DESIGN**

**WE CAN PUT YOUR LOGO ON ALMOST ANYTHING!**



**EMBROIDERY • SIGNS  
CUPS • CAR DECALS**

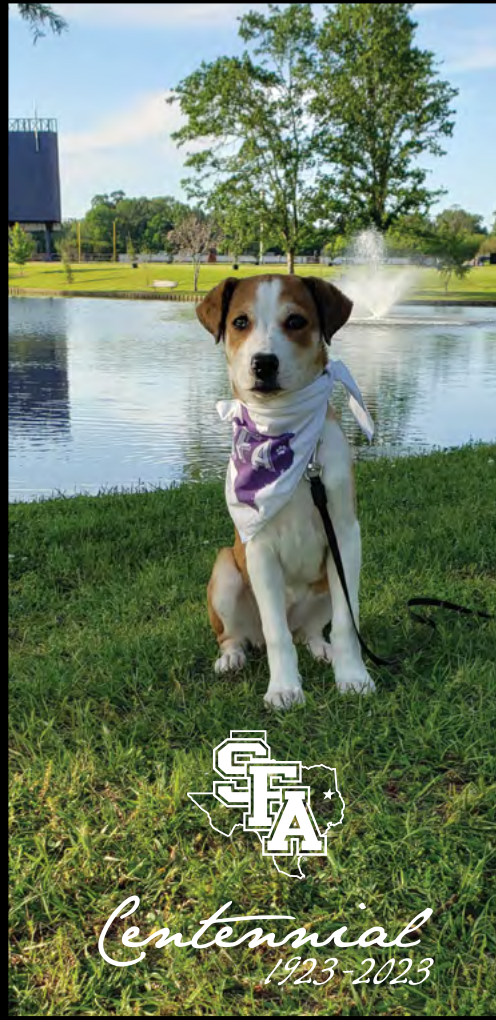
*Call* TODAY! **936-462-8543**

**CUSTOM DESIGNED  
TO YOUR SPECIFICATIONS**

**COME BY AND PLACE YOUR ORDER  
(OR GO TO OUR WEBSITE AND PLACE YOUR ORDER THERE)**

**2920 Westward Dr. ■ Nacogdoches, TX ■ 75964**

WWW.JACKBACKERS.COM



PRESENT THIS AD TO RECEIVE

**25% OFF**  
**SINGLE ITEM APPAREL PURCHASE**

Valid in store only. Offer expires September 30, 2023.

**JACK BACKERS**  
**COLLEGE BOOKSTORE**

*SFA's Only Alumni Owned Bookstore!*

315 E. College Street | On the corner of East College & Raguet Streets



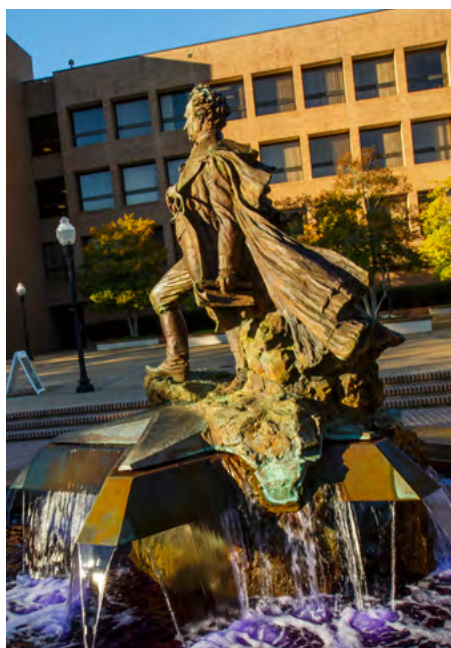
# MEET YOUR NEW HOME

## What does SFA stand for?

Stephen Fuller Austin, the university's namesake and Father of Texas.

## Stephen F. Austin Facts

- Born Nov. 3, 1793, in Virginia; died Dec. 27, 1836
- Graduated from Transylvania University in Kentucky
- Created informal armed groups that later became known as the Texas Rangers
- Appointed as the Republic of Texas' first secretary of state in October 1836
- A 67-foot statue of Austin stands in Angleton, Texas.
- The National Statuary Hall Collection permits each state to select just two statues for display at the Capitol in Washington, D.C. Stephen F. Austin was selected as one of Texas' statues.
- In 1959, Stephen F. Austin was posthumously inducted into the Hall of Great Westerners.



## What is Surfin' Steve?

Surfin' Steve is how Lumberjacks refer to the statue/fountain of our namesake, Stephen F. Austin. It is located in the center of the campus and depicts Austin standing on a star. It's one of the most popular landmarks and meeting locations on campus.



## Lumberjack Mascot

In 1932, SFA students and faculty met to decide on a mascot. Several names were considered, including Pine Cones. By vote, the assembly chose Lumberjacks.



### Nacogdoches History

Nacogdoches is a Caddo Indian word. Folklore legends tell of a Caddo chief ordering his two grown sons to report to him precisely at sunrise. He told one son to walk east and the other west until sunset. The sons were to establish villages at the places they reached. The westward-bound son stopped in a grove of persimmon trees and named his village Nacogdoches, meaning persimmon. The eastbound son reached a grove of papaw trees and named his village Natchitoches, meaning papaw.



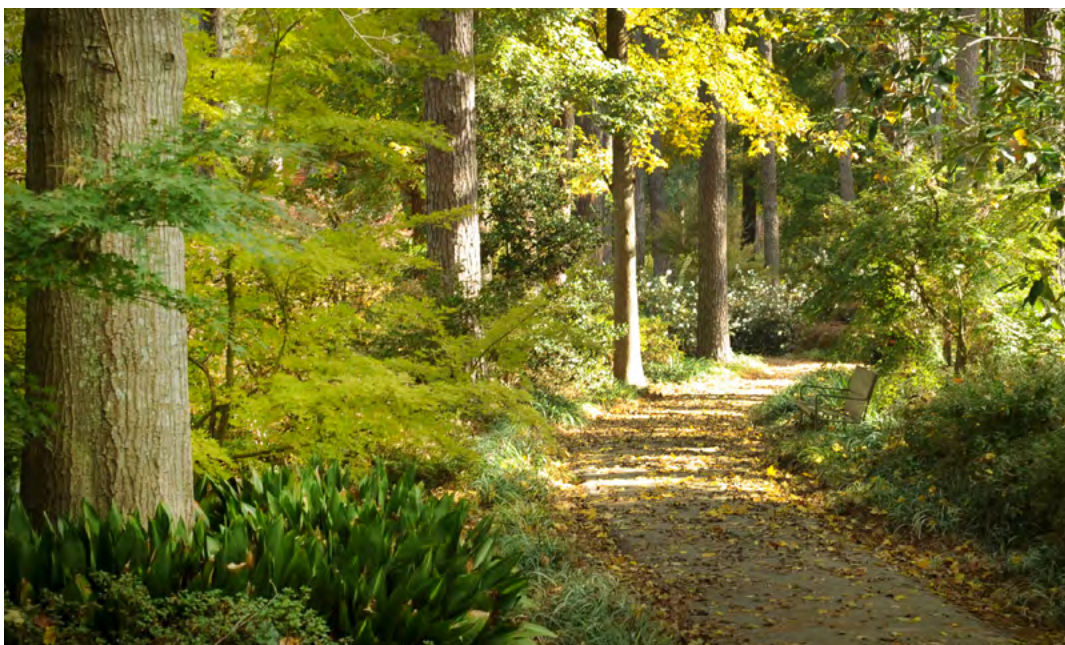
### SFA's Famous Squirrel

SFA is famous for the squirrels on its campus. They love and depend on trees — just like Lumberjacks. Don't be surprised if one comes up to you to take a waffle fry right out of your hand. And yes, one of our squirrels has his own Instagram and Twitter account. Follow him at [@SFA\\_Twiggy](#). Twiggy's favorite pastime is eating sunflower seeds from his favorite tree swing outside of the Ferguson Building. He also has a picnic table to eat his lunch.



### Music, Theatre and Art Events

SFA's Micky Elliott College of Fine Arts showcases the talents of SFA students and faculty members in various productions, exhibits, performances, concerts and shows year-round. Find out about upcoming performances at [finearts.sfasu.edu](https://finearts.sfasu.edu).



### Explore the miles and miles of beautiful trails.

Nacogdoches is the Garden Capital of Texas. On the university's campus, there are several world-class landscapes that provide breathtaking opportunities to enjoy the seasons. SFA's recreational trails include 68 acres of hiking and bicycle trails that wind through Texas' oldest town. The Lanana Creek trail runs through the east side of campus.

## LUMBERJACK PRIDE Brought to you by Commercial Bank of Texas



**Get a FREE SFA Spirit Debit Card with any CBTx Checking Account!**



**Tracy Thomas**

936-715-4280

tracy@cbtx.com

NMLS #2301036

SFA Banking Center  
222 Vista Drive

**Welcome to Stephen F. Austin State University!** We're your full-service bank on campus and beyond — bringing you the latest technology and tools like Interactive Teller Machines and Mobile Deposit, plus Online Banking, Bill Pay and Money Manager so you can make the most of your #CollegeLife. That's Banking Texas Style.

On-campus ATMs include: ★ Baker Pattillo Student Center  
★ Steen Library ★ Steen Hall ★ Lumberjack Landing

Visit us at [www.cbtx.com](http://www.cbtx.com) for a full list of banking centers and ATM locations.



**Charlotte Ashcraft**

936-715-4140

cashcraft@cbtx.com

Main Banking Center  
215 E. Main Street

CBTx VP & SFA Alumni  
Association President

 **CBTx**  
Commercial Bank of Texas, N.A.®  
800-723-7601 ★ [www.cbtx.com](http://www.cbtx.com)

Alba | Allen | Bedford | Cushing | Diboll | Elkhart | Emory | Farmersville | Kennard  
Lewisville | Lufkin | McKinney | Nacogdoches | Palestine | Roxton | San Augustine | Wells



# FINANCIAL RESOURCES

## Financial Aid and Scholarships

Located on the first floor of the Austin Building, the Office of Financial Aid and Scholarships exists to help you find the best way to pay for your SFA education. All students who apply for financial assistance must fill out a Free Application for Federal Student Aid at [studentaid.gov](https://studentaid.gov).

SFA offers hundreds of scholarships each year to both new and returning students. To be considered, you must fill out the general scholarship application through mySFA, the university's intranet web portal. The application is available starting Sept. 1 each year, and the deadline for submission is Feb. 1. Scholarships are offered on such criteria as academic major, cocurricular activities and talent. For more information on scholarships, visit [sfasu.edu/scholarships](https://sfasu.edu/scholarships).

The Office of Financial Aid and Scholarships can provide you with the necessary information to apply for financial assistance — whether that be scholarships, grants and/or federal loans.

In order to be considered for financial assistance, you'll be required to complete the FAFSA. Here's what to do:

- You can apply starting Oct. 1 for the next academic year by logging on to [studentaid.gov](https://studentaid.gov).
- You and/or your parent or legal guardian must electronically sign the FAFSA. Missing signatures will delay processing.
- Verify all responses for accuracy.
- Print yourself a copy.
- If selected for the verification process, be prepared to contact the IRS for a copy of your tax transcripts.

**Remember** — If you received a scholarship from your high school or other organization, SFA must be notified to help determine an accurate financial aid award package for you. You can complete the electronic resources request to notify us of pending scholarship amounts and the entity that awarded the scholarship.

## Additional Information About Financial Assistance

SFA offers a number of services through its financial aid office, including short-term loans, summer aid and study abroad assistance. A net price calculator also is available through the Texas Higher Education Coordinating Board and is intended to provide students with useful consumer information regarding college costs after financial aid is taken into consideration. For more information regarding financial aid and the services SFA provides, visit [sfasu.edu/faid](https://sfasu.edu/faid).

## Financial Literacy

SFA has teamed up with CashCourse to provide you with a step-by-step guide for taking charge of your financial life. Use the website to explore financial topics, practice money skills and plan for your future. Log in to [gosfa.com/finliteracy](https://gosfa.com/finliteracy) and start improving your financial literacy today!

Another resource is the Student Financial Advisors group created and managed by the Rusche College of Business. Located in the McGee Business Building, Room 169, advisors are a free resource dedicated to the promotion of financial literacy and smart money management.

## The Student Emergency Aid Fund

If you are having trouble paying your eBill or need assistance with textbooks after your eBill has been paid, SFA has a free resource set up for those of you who may find yourself in need of financial assistance.

The Student Emergency Aid Fund is a free resource for students where you have the opportunity to receive a one-time school or life expense grant up to \$1,000. To be eligible for SEAF, you must have utilized all financial resources, including student loans. Special circumstances may be considered. More information about SEAF can be found at [sfasu.edu/thehub/sos/seaf](https://sfasu.edu/thehub/sos/seaf).

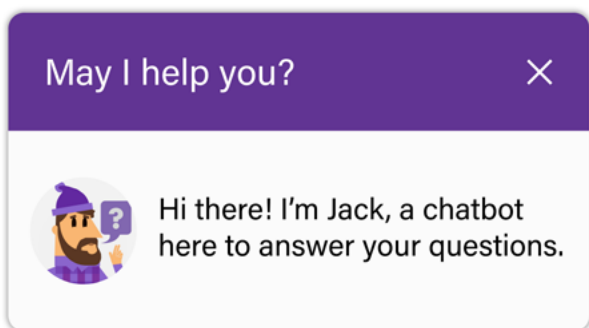
# HOW TO PAY YOUR BILL

## Paying Your Bill Online

Your mySFA account is where you'll pay for your bill online.

1. Log in to mySFA.
2. Click the "Billing" tab.
3. Click "Pay Online with eBill."

Student Business Services, located on the second floor of the Austin Building, handles student bills. The office also initiates financial aid refunds and cash advances through BankMobile®. If you have questions about an eBill or other payment-related inquiries, call (936) 468-6960 or email [sbs@sfasu.edu](mailto:sbs@sfasu.edu). Visit the [Student Business Services website](#) for more information.



## Axe Handle One-Stop Shop

Looking for one resource to "handle" all your questions? SFA's brand new Axe Handle one-stop shop can help! We are committed to improving the university experience for all Lumberjacks through our centralized virtual services. To reach us, call (936) 468-1000 directly or any office the Axe Handle services, including the Office of Financial Aid and Scholarships, Student Business Services, Office of the Registrar, or Residence Life. Have an after-hours question? You also can interact with our website's chatbot, Jack, any time of the day or night.

# OTHER RESOURCES

## Testing Services

If your student needs to take tests, such as the TSI Assessment Exam, Texas Educator Certification Exam (TExES), CLEP, Graduate Management Admissions Test, TEAS or others, an appointment must be made with Testing Services at (936) 468-3958. Some tests require a proctoring fee.

## Campus Technology and Tech Support

More than 20 computer labs and approximately 800 workstations are available for student use. One of the technology tools you'll use throughout your SFA career is mySFA. Through this online portal, you'll manage your SFA email account, register for courses, view your grades and transcripts, and more. Students can access fast and easy printing using the Wēpa wireless printing stations located throughout campus, as well as free charging stations for smart devices.



Tech Support Services for students include device repair, issues with mySFA, passwords, Office 365, wireless networks, etc. To learn more, visit our online Help Desk at [help.sfasu.edu](http://help.sfasu.edu). You also can call (936) 468-4357 or email [helpdesk@sfasu.edu](mailto:helpdesk@sfasu.edu).



There are charging stations for electronic devices throughout campus. Each station can hold up to 10 devices. All you need is your electronic device and student ID card.

# *Always* LEASING

for Fall, Spring & Summer  
*All Bills Paid!*



- ✓ Beautiful Pools
- ✓ Spacious Floor Plans
- ✓ Efficient Floor Plans
- ✓ Comfortable Living

Taliesin  
apartments

1811 North St.  
936.569.0032

THE CALIFORNIAN  
apartments

728 E. Starr  
936.569.2477

RUSSIAN RIVER  
APARTMENTS

3027 N. Pecan  
936.564.2562

Scan for 3D Tours  
of Our Properties!



# Newk's®

EATERY

SANDWICHES | SALADS | PIZZAS & MORE



Newk's **REWARDS**

Earn Points. Get **FREE** Newk's.

**SIGN UP TODAY!**

FREE Cake on Your Birthday!  FREE Drink for Signing Up!



3609 North St. Nacogdoches, TX | Order Online Or Through the Newk's App



# DIVERSITY, EQUITY AND INCLUSION

The Office of Diversity, Equity and Inclusion is primarily responsible for creating a network of caring responses to our diverse student body. The office achieves this by ensuring critical services and programs are accessible to all students and sharing information about the resources available to them. The areas for which we are individually responsible are Disability Services, Veterans Resource Center, Lumberjacks Care, Office of Multicultural Affairs and Title IX office.

These SFA offices are important because they demonstrate personal caring to individuals in extraordinary circumstances — students who are in crisis, students dealing with mental health concerns, students injured on or off campus, or students who are part of our underrepresented populations.

The Office of Diversity, Equity and Inclusion wants to ensure all aspects of the student's experience at SFA are positive and holistic. The intent of this office is to foster an open and welcoming environment where our students, faculty and staff of all backgrounds can learn, work and serve while embracing all human differences and building on commonalities.

[sfasu.edu/odei](https://sfasu.edu/odei)

(936) 468-6300

[diversity@sfasu.edu](mailto:diversity@sfasu.edu)

## Disability Services

SFA is committed to providing equal opportunities in higher education to students with disabilities. Disability Services works collaboratively with the student to facilitate specialized support services and accommodations that meet individual disability-related needs.

Students who experience temporary limiting conditions as a result of injuries, surgeries or short-term disabilities also may visit this office for access to resources during the duration of the condition. For more information, visit [sfasu.edu/disabilityservices](https://sfasu.edu/disabilityservices).

## Office of Multicultural Affairs

The OMA strives to create a welcoming and inclusive environment for all students by creating networks of support and developing programs for students to provide meaningful interactions and learning experiences.

In addition, the office assists many student organizations in promoting social justice and cultural and racial diversity through lectures, special events and observances. Learn more on Page 44, and visit us online at [sfasu.edu/multicultural](https://sfasu.edu/multicultural).



## Title IX

SFA is dedicated to providing an inclusive working and learning environment that affirms the rights and dignity of every Lumberjack. With this goal in mind, discrimination on the basis of sex, sexual orientation, gender identity and gender expression is prohibited.

The Title IX office supports the university's commitment by offering training, programs and processes that promote an inclusive, diverse and supportive environment consistent with the SFA Way.

All incoming students are required to complete an online training covering Title IX and substance use on campus to aid the university in stopping sex- and gender-based discrimination, remedying its effects, and preventing its reoccurrence. More information can be found at [sfasu.edu/titleix](https://sfasu.edu/titleix) and on Page 29.

## Veterans Resource Center

Located in the Baker Pattillo Student Center, the VRC provides a space for military veterans and their dependents to gather, socialize and form relationships

with other veterans and their dependents. These networks of support are meant to boost and build feelings of inclusion at SFA. The VRC also is the hub for veteran programming that includes connecting student veterans to faculty veterans, as well as providing access to veterans' resources provided by the university and outside agencies.

To learn more about utilizing the GI Bill® or other Veterans Affairs educational benefits, email [vaservices@sfasu.edu](mailto:vaservices@sfasu.edu).

[sfasu.edu/vrc](https://sfasu.edu/vrc)

(936) 468-6494

[sfaveterans@sfasu.edu](mailto:sfaveterans@sfasu.edu)



The **Office of Multicultural Affairs** creates a campus environment where all SFA students feel welcome, participate in meaningful cross-cultural interactions and engage in learning experiences that promote respect for diversity.

f @omasfa



### A FEW OF OUR EVENTS

- Noche De Gala
- Tunnel of Oppression
- MLK Day of Service
- Women's Empowerment Summit
- Men's Empowerment Summit
- OMA Graduation Celebration
- Homecoming Step Show
- Diversity Week
- Diversity Conference

### RESOURCES

- Allied Space
- Axcel Mentoring Program
- ASPIRE
- Brother2Brother
- Diversity and Inclusion Certification Program
- Impact U Volunteer Organization
- Meeting and Study Room
- Multicultural Resource Library
- and more!

Visit [sfasu.edu/oma](https://sfasu.edu/oma) to learn more.

# DOWNLOAD OUR NEW APP



Download on the  
**App Store**






ANDROID APP ON

**Google play**





# FIND YOUR FOCUS

-  Treatment of General Eye Disorders, Comprehensive Exams
-  The latest in Eye Wear Lens Technology, Designer Frames and Contacts
-  Advanced Glaucoma, Retina and Cataract Surgery and Management



*Cataract, Glaucoma & Retina*  
CONSULTANTS OF EAST TEXAS

*Medical Arts Surgery Center | Benchmark Optical*

*Nacogdoches' only  
full-service eye clinic,  
surgery center and  
optical boutique  
staffed by board-certified,  
fellowship-trained  
Ophthalmologists,  
Optometrists and Opticians.*



**SHANNON L. SMITH, M.D., F.A.C.S.**  
Fellowship-Trained Glaucoma Specialist



# MISC. STUFF YOU NEED TO KNOW

## The Office of the Registrar: Registration, Transcripts and Diplomas

Once you are accepted and enrolled at SFA, the registrar's office can help you update your personal record and protect the privacy of your academic records. We help students with questions about:

- Registering for classes
- Adding/dropping a class
- Withdrawing from all classes
- Medical appeals
- Family Educational Rights and Privacy Act
- Legal name changes
- Gender markers
- Sending transcripts
- Applying for graduation
- Printing diplomas
- Degree verification
- Proof of enrollment (showing good grades for lower insurance)

To learn more, visit [sfasu.edu/registrar](https://sfasu.edu/registrar).

### Know your deadlines!

Registration [dates and deadlines](#)

Graduation [dates and deadlines](#)

### Contact us:

8 a.m. to 5 p.m., Monday through Friday

Rusk Building, Second Floor

(936) 468-2501

[registrar@sfasu.edu](mailto:registrar@sfasu.edu)

## Family Educational Rights and Privacy Act

The FERPA is a federal law that protects the privacy of student education records. The law applies to all schools that receive funds under an applicable program of the U.S. Department of Education. FERPA gives parents certain rights with respect to their children's education records. These rights transfer to the student at the age of 18 or if the student attends a school beyond the high school level. Students to whom the rights have transferred are "eligible students." If you would like to obtain more information regarding FERPA, visit [sfasu.edu/registrar](https://sfasu.edu/registrar).

## SFA Alumni Association

The SFA Alumni Association supports current students and graduates with events, programs and networks during school and after graduation. Students can join the Tomorrow's Alumni Generation program as a member of the Alumni Association. Students may enjoy association benefits, extra discounts and other perks.

The official SFA class ring is purchased through the association after a student completes 60 hours. Senior Send-Off is an exciting event that celebrates graduation with an opportunity to join the Alumni Association as an official graduate of SFA. For more information, visit the association's website at [sfaalumni.com](https://sfaalumni.com).

# CAMPUS SAFETY AND PARKING

SFA's University Police Department employs Texas commissioned peace officers who patrol the campus 24/7. Here are some of the services UPD provides:

- **Emergency call boxes:** Located throughout campus, the boxes are bright yellow or white and labeled "Emergency." Operation is easy, and the call goes directly to the UPD communication center.
- **Police escorts:** Between dusk and daylight, UPD provides police escorts to any member of the Lumberjack family between campus locations. Just use the call box to request one or call (936) 468-2608. An evening shuttle bus also operates from 5 p.m. to 1 a.m. Sunday through Thursday and runs a circular route through campus.
- **Vehicle assistance:** UPD can provide help to students having difficulty starting their vehicle or retrieving keys locked inside a vehicle.
- **Jack Alerts:** SFA provides a notification system whereby members of the campus community can receive timely notifications concerning emergencies that may affect them. Notifications are sent through text message, voice call, email, Facebook and Twitter. The system is in compliance with the Clery Act. Registration takes place through mySFA by clicking on "Sign Up for Campus Alerts."
- **Lumberjack Guardian:** This mobile app provides enhanced campus safety through real-time interactive features that create a virtual safety network of friends, family and UPD. Features in the app include a panic button, tip texting, personal guardians, a safety timer and a safety profile to include medical conditions. [View download instructions](#) at [sfasu.edu/upd](https://sfasu.edu/upd) then scroll down and click on "Register Now" for the Lumberjack Guardian app located on the left side.
- **Training programs:** Personal safety training, including defense and alcohol and drug awareness, are offered through UPD. Contact them at (936) 468-2265, or visit [sfasu.edu/upd](https://sfasu.edu/upd) for a complete list of programs and sign-up information.
- **Eyewitness text tip:** This service provides a way for the SFA community to report crimes anonymously. Just send a text to 67283. Begin the message with SFASUTIP.
- **Automated external defibrillators:** Located throughout campus, these devices provide instructions when opened.

Remind your student that, in case of an emergency, dial 911 from any campus phone or call UPD at (936) 468-2608. To view SFA's Annual Security and Fire Safety Report, access [sfasu.edu/upd](https://sfasu.edu/upd) and click the "Police Department" tab. To receive the report by mail, call (936) 468-2252.

## *A note about crime prevention*

Students can help avoid becoming victims by following a few simple actions:

- Lock the residence even for short trips down the hall.
- Do not leave valuables in the open.



- Engrave valuables with a driver's license number.
- Record the serial numbers and brand names of property (view information about property registration on mySFA).
- Require identification before admitting unfamiliar people into a residence.
- Remain on lighted walkways and/or use the police escort service at night.

## Parking Services

Students, faculty and staff who park on campus must purchase a parking permit. Student parking lot assignment is based on residence hall location. Parking permits for cars and trucks are hangtags, and motorcycles use decals.

### *Helpful information:*

- Parking permits can be purchased online through the parking portal in your mySFA account.
- Parking rules are enforced 24 hours a day, even when classes are not in session.
- Students should only park in designated areas for their particular permit type and properly display the permit.
- Report lost/stolen permits immediately.
- If you receive a citation, do not ignore it. Vehicles with three or more citations are boot eligible. Students who receive 10 or more citations in an academic year may lose their parking privilege for a year.
- There is a 10-day appeal period for citations.
- Students who change cars during the semester should move the hangtag to the new vehicle.
- Visitor parking spaces require a permit obtained at either Parking Services or the Visitors Booth on Griffith Boulevard.
- A person temporarily disabled due to illness or injury may obtain a temporary permit valid for up to one week. Contact Parking Services for more information.

## Jack Track Shuttle Service

If you don't have access to an automobile, don't worry. Movement around campus will still be easy with SFA's Jack Track shuttle service. It's free for all currently enrolled SFA students.

During the fall and spring semesters when classes are in session, shuttle buses travel around the campus and stop at high-traffic areas. Jack Track is safe, convenient and reliable. Just wait at one of the bus stops, and a bus will be by shortly. For schedules and routes, visit [sfasu.edu/jacktrack](https://sfasu.edu/jacktrack).



# CONTACT INFORMATION

Academic Advising - Student Success Center	(936) 468-5803	<a href="https://sfasu.edu/advising">sfasu.edu/advising</a>
Academic Assistance and Resource Center	(936) 468-4108	<a href="https://sfasu.edu/aarc">sfasu.edu/aarc</a>
Admissions	(936) 468-2504	<a href="https://sfasu.edu/admissions">sfasu.edu/admissions</a>
Alumni Association	(936) 468-3407	<a href="https://sfaalumni.com">sfaalumni.com</a>
Athletics Department	(936) 468-3501	<a href="https://sfajacks.com">sfajacks.com</a>
Baker Pattillo Student Center Info Desk	(936) 468-3401	<a href="https://sfasu.edu/student-services">sfasu.edu/student-services</a>
Barnes & Noble Bookstore	(936) 468-2108	<a href="https://sfasu.bncollege.com">sfasu.bncollege.com</a>
Center for Career and Professional Development	(936) 468-3305	<a href="https://sfasu.edu/ccpd">sfasu.edu/ccpd</a>
Counseling Services	(936) 468-2401	<a href="https://sfasu.edu/counseling-services">sfasu.edu/counseling-services</a>
Dean of Students Office	(936) 468-7249	<a href="https://sfasu.edu/dean-of-students">sfasu.edu/dean-of-students</a>
Disability Services	(936) 468-3004	<a href="https://sfasu.edu/disability-services">sfasu.edu/disability-services</a>
Financial Aid and Scholarships	(936) 468-2403	<a href="https://sfasu.edu/financial-aid">sfasu.edu/financial-aid</a>
Health and Wellness Hub	(936) 468-2813	<a href="https://sfasu.edu/thehub">sfasu.edu/thehub</a>
Honors Program	(936) 468-2813	<a href="https://sfasu.edu/honors">sfasu.edu/honors</a>
Jack Camp	(936) 468-1367	<a href="https://sfasu.edu/jackcamp">sfasu.edu/jackcamp</a>
Lumberjacks Care/Title IX	(936) 468-8292	<a href="https://sfasu.edu/lumberjacks-care">sfasu.edu/lumberjacks-care</a>
Multicultural Affairs	(936) 468-1073	<a href="https://sfasu.edu/multicultural">sfasu.edu/multicultural</a>
Orientation and Transition Programs	(936) 468-6641	<a href="https://sfasu.edu/orientation">sfasu.edu/orientation</a>
Parking Services	(936) 468-7275	<a href="https://sfasu.edu/parking">sfasu.edu/parking</a>
Registrar	(936) 468-2501	<a href="https://sfasu.edu/registrar">sfasu.edu/registrar</a>
Residence Life (Housing)	(936) 468-2601	<a href="https://sfasu.edu/reslife">sfasu.edu/reslife</a>
SFAS 1101	(936) 468-6960	<a href="https://sfasu.edu/sfas1101">sfasu.edu/sfas1101</a>
Student Business Services	(936) 468-6960	<a href="https://sfasu.edu/sbs">sfasu.edu/sbs</a>
Student Employment Center	(936) 468-2304	<a href="https://sfasu.edu/hr">sfasu.edu/hr</a>
Student Engagement Programs	(936) 468-1018	<a href="https://sfasu.edu/student-affairs">sfasu.edu/student-affairs</a>
Student Success Center (Steen Library)	(936) 468-5803	<a href="https://sfasu.edu/student-success">sfasu.edu/student-success</a>
Texas Success Initiative	(936) 468-5803	<a href="https://sfasu.edu/ssc/tsi">sfasu.edu/ssc/tsi</a>
University Police Department	(936) 468-2608	<a href="https://sfasu.edu/upd">sfasu.edu/upd</a>
Veterans Resource Center	(936) 468-6494	<a href="https://sfasu.edu/vrc">sfasu.edu/vrc</a>

# POLICIES TO KNOW

Starting your journey at SFA will be an exciting time, and you will find several policies have been adopted to help you succeed and remain in good standing with the university. The following policies include the university's illicit drug and alcohol policy, the student conduct code, and the university's policy on hazing. An online manual can be accessed for a complete list of current policies by visiting [sfasu.edu/policies](https://sfasu.edu/policies).

## 2.2 Accessibility for Persons with Disabilities

### 2.11 Nondiscrimination

### 2.13 Title IX

### 4.1 Student Academic Dishonesty

### 6.1 Academic Accommodation for Students with Disabilities

### 6.3 Final Course Grade Appeals by Students

### 6.4 Academic Probation, Suspension and Reinstatement for Undergraduates

### 6.7 Class Attendance

### 6.16 Satisfactory Academic Progress for Financial Aid Recipients

### 6.22 Withdrawal Without Financial Clearance

## 9.3 Digital Millennium Copyright

### 10.3 Hazing

### 10.4 Student Code of Conduct

### 10.9 Student Organization Formation and Recognition

### 10.10 Student Organization Risk Management Training

### 13.9 Firearms, Explosives and Ammunition

### 13.11 Illicit Drugs and Alcohol Abuse

### 13.13 Missing Student Notification

### 13.21 Smoking, Vaping and Use of Tobacco Products

### 16.4 Expressive Activities