

SFA GARDENS ANNUAL REPORT SEPT 1 2015 – AUG 31 2016

INTRODUCTION

STATE LINE, GRANTS, ENDOWMENTS,
SALE INCOME AND GIFTS 2015-2016

SFA GARDENS MAP

GARDEN GOALS FOR THE PAST YEAR – STATUS

GARDEN GOALS FOR 2016 - 2017

PLANT SALE – FALL 2015 AND SPRING 2016

LES REEVES LECTURE SERIES

DAVE CREECH

GREG GRANT

DAWN STOVER

ELYCE RODEWALD

KERRY LEMON

DUKE PITTMAN

A PICTORIAL HISTORY – 2015-2016



SFA GARDENS ANNUAL REPORT 9-01-2015 to 8-31-2016

Introduction

SFA Gardens continues as a recognized center within Stephen F. Austin State University, Nacogdoches, Texas, USA. SFA Gardens is a multi-faceted public garden developed within SFA's Arthur Temple College of Forestry and Agriculture. The gardens are managed by Associate Director Dr. David Creech (1/2 time) and 4.5 FTE staff, both professional and classified, volunteers and student workers. SFA Gardens cover 68 acres on the SFA campus -10 acres in the Mast Arboretum and Jim and Beth Kingham Children's Garden, eight acres in the Ruby M. Mize Azalea Garden, eight acres in the Gayla Mize Garden, and 42 acres in the Pineywoods Native Plant Center and Jimmy Hinds Park. SFA Gardens plays a role in the maintenance and development of the 60-acre SFA's Recreational Trails and Gardens, which is adjacent to the Gayla Mize Garden.

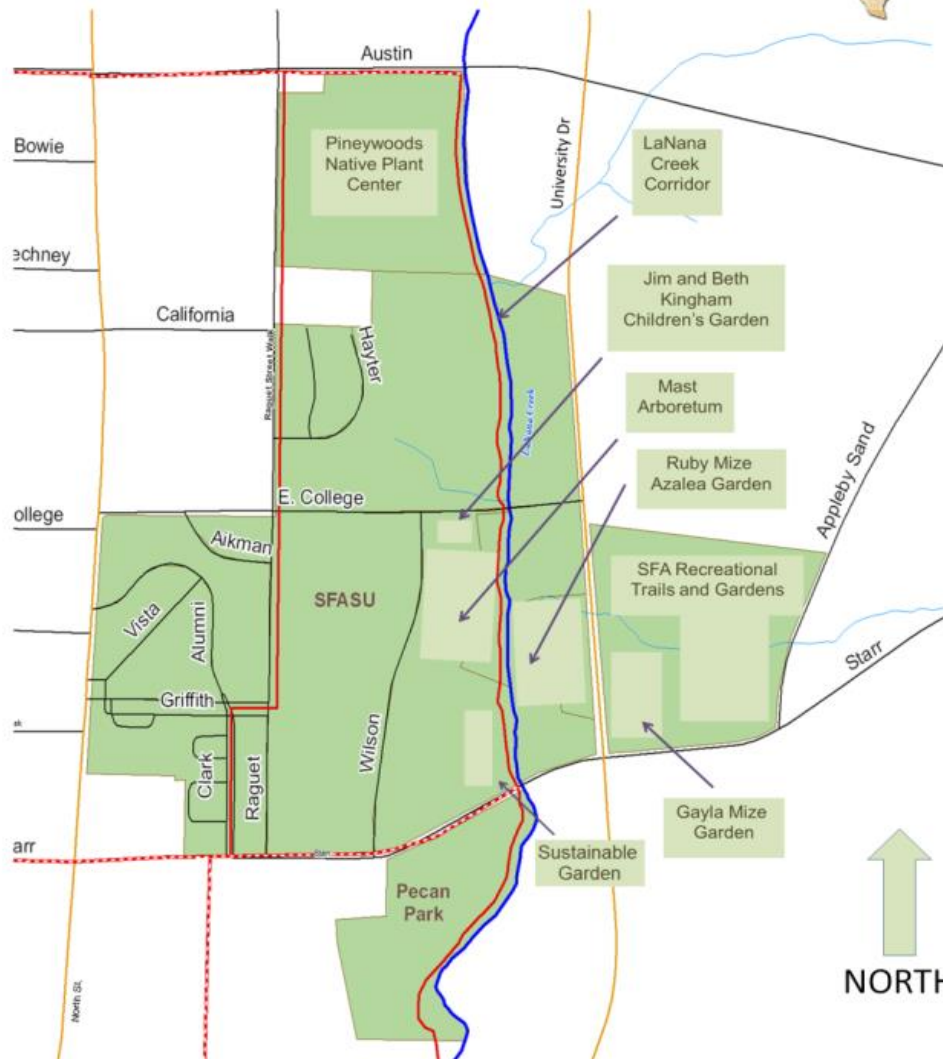
Community support is provided by a "Friends of SFA Gardens" group with about 200 members and the SFA Gardens Advisory Board, which meets quarterly. SFA Gardens enjoys a great corps of volunteers. In the past year, our Environmental Education volunteers generated 595 hours for a total value of \$13,958.70. The Gardens Volunteer Corps generated 1630.6 hours, worth \$38,368.02, with most of the focus on growing and managing the two plant sales per year. Thus, the total volunteer hours for the SFA Gardens set a record this past year: 2225.6 hours' worth \$52,326.72. While State of Texas funding assists with operations and maintenance expenses, the gardens staff raise significant funds through plant sales, a robust grant-seeking effort, and six endowments that support the gardens. The Ina Brundrett Conservation Education Building was constructed at the PNPC in 2014 after a successful campaign to raise the funding. In the past year, we have added additional outdoor lighting to facilitate parking and visitor access during the evening programs. The building demonstrates environmentally sensitive methods of construction and operation.

A new development since 2014, the Jimmy Hinds Park, received funding in the past year from Barbara Finney, who was the daughter of Jimmy Hinds, the first Agricultural Professor at SFA. In the past year, this project saw the construction of a vineyard, the placement of a PVC- sign that recognizes the contributions of Jimmy Hinds, the very first Agriculture instructor at SFA (Barbara Finney's father), and the installation of four benches in the weeping bald cypress treehenge.

Plant diversity and adaptability are key focal points in developments in each of the four main gardens, offerings in the two plant sales, and in the public outreach by staff through lectures, public events, publications, and tours. Environmental education for future generations is another main initiative that reaches nearly 14,000 a year in a broad spectrum of programs for ages K-adult.



ARTHUR TEMPLE COLLEGE OF FORESTRY AND AGRICULTURE
Stephen F. Austin State University
Nacogdoches, Texas



LaNana and Banita Creek Trail System		Date: July 25, 2013
CASTILAW ENVIRONMENTAL SERVICES, LLC <small>NACOGDOCHES, TX 75701-4491 SULPHUR SPRING, TX 75483-0204</small>	City of Nacogdoches Nacogdoches County, Texas	
	Created By: Neil Boitnott, Austin Russell, & Adam Miller	Data Source: CES & City of Nacogdoches Datum: NAD 83

Trail System	Highways
Existing - 5.4 Miles	Highways
Proposed - 2.7 Miles	Streets
Areas of Interest	Major Creeks
	Minor Creeks

STATUS OF GOALS FOR PAST ANNUAL REPORT: 2015-2016

Dave Creech

HIGH PRIORITY: With the Introductory Crops course being accepted as a “core” science course, the SFA Gardens use of the Horticulture facility behind the Agriculture building came under space pressure. After discussions with the two Horticulture professors in Nov 2015, it was agreed that the SFA Gardens staff would move to the PNPC – and that a campaign for the construction of a new greenhouse would be undertaken. The project received the permission of the Site Modification committee at SFA. The campaign received the permission of the President shortly thereafter. At the close of the year (Aug 31, 2016), the project had achieved about \$35,000 in donations.

Pittman/Creech: Bracing for the Gayla Mize Garden Gazebo – add the eight rafters that are under the Ag building – in-house roof creation – IN PROGRESS

Creech/Dawn: Pecan variety planting at Pecan Acres Park – a City/SFA Gardens collaboration – DONE, MAPPED, AND HEALTHY

Creech: Continue Acer skutchii evaluation at the SRC and replant any losses. DONE

Creech/Greg: Add two rows of blueberry germplasm to the plots at the N end of the PNPC and tie in to existing irrigation system. DONE

Creech/Greg: Now that gutters are installed, design and install rainwater capture at the Ina Brundrett Conservation Education Building – UNDER STUDY

GM Garden plantings expanded – GM Garden drainage project – PLANTINGS CONTINUE, DRAINAGE WAY DONE

Pittman/Creech: Expand Kiwi Evaluation Plots - DONE

Creech: Expand Coliseum Parking Lot plantings – DONE

Dawn/Greg: Expand Wildflower Plantings along Starr Avenue – augment with plugs of appropriate perennials – develop signage – DONE, NEEDS SIGNAGE

Work with Physical Plant and donor to get GM Well Water to RM Garden – NOT ACCOMPLISHED.

Increased focus on pollinator/prairie habitat creation at the SFA Gardens. Search for grants and other sources of funding to facilitate this goal. IN PROGRESS

Develop a Wildflower PVC sign and install there. NOT ACCOMPLISHED

Continue to expand woody plant and hardy chrysanthemum trials – post excel files and data collection on web. NEED TO REINVIGORATE MUM TRIAL

Host second Industry Day event in June 24, 2016 DONE

PNPC and JIMMY HINDS PARK

Expand and enhance the profile of the PNPC's rare, threatened, and endangered plants conservation program utilizing the Elisabeth Montgomery Endowment funds.
NOT ACCOMPLISHED

Assist campaign for new horticulture greenhouse facilities for SFA Gardens.

Greg: Make at least 20 K at both spring and fall sales. DONE

Replace plants lost in 2015 drought. WORK IN PROGRESS

Trail maintenance – SOME PROGRESS, NEED MORE

Repair and enhance landscape irrigation. NOT ACCOMPLISHED

Expand nursery herbaceous pad. DONE

Replace GH mist nozzles. DONE PLUS BOTTOM HEAT REWORKED

Develop a parking plan to allow vertical parking. NOT ACCOMPLISHED

In bottomland, create 5 glades . . . sunlit circles already located, to be planted in winter 2016. NOT DONE

Plant more native plants down Sara's branch in appropriate spots and provide chicken wire tubes for protection from deer. SOME ADDITIONS BUT NEED MORE.

Paint the new Jimmy Hinds Park boardwalk floor. DONE

Repair bridges and boardwalks in the PNPC with paint and grit. DONE

Return to an annual Privet control effort in bottomland. NOT DONE

Benches at JH Park placed – Interpretive sign at JH Park placed. DONE

New red iron ore rock trails at JH Park expanded DONE

Structure on Oxbow Island at JH Park created with seating – IN PLANNING

Oxbox planting with wetland plants. IN PLANNING

Muscadine Grape Vineyard at Jimmy Hinds Park built, planted and with irrigation.
DONE

Signage for the muscadine planting. NOT DONE

Elyce Rodewald

Focus on vegetable gardening with after-school program

Increase education assistant position to full time in order to maintain current level of educational programming

Kerry Lemon

Help develop program for gardening with youth.

Assist in developing positions and job descriptions to maintain current level of educational programming.

Assist in development of curriculum with a focus on endangered plant species for summer camp and third grade field trips.

Organize educational programming files and create curriculum folders for after-school activities.

GOALS FOR 2016-2017

Dave Creech

Raise \$150,000 for new greenhouse range at PNPC and build the new greenhouse.

Coordinate with ONCOR to deal with construction of new pylons for the high voltage lines.

At the PNPC, develop a parking plan to allow vertical parking. Install gate at S end PNPC to the Raguet Elementary Parking Lot and provide lighting.

In PNPC bottomland, create 5 glades . . . sunlit circles already located, to be planted in winter 2016.

Return to an annual Privet control effort in PNPC bottomland. Spot treatments.

Add JH Park, add one more row of Muscadine grapes.

Hire Kerry Lemon's replacement

Hire Greg Grant's replacement.

Step up conservation research utilizing the Elisabeth Montgomery Endowment fund.

Increase advertising and promotion of the SFA Gardens Industry Day.

Jimmy Hinds Park – add an additional row of muscadine grapes because of recent acquisitions. Working with TAMU's Justin Scheiner on this project. Add a small orchard of fruit trees starting with plum and persimmon varieties. Oxbow island structure at JH Park.

At the GM Garden, assist Eagle Scout Luke Stanley with a "labyrinth Project"

At the GM Garden, finish the gazebo project which involves additional bracing, a roof cap and a weather vane.

Moody plot work expanded to the full two acres of property. Cooperate with Steve Wagner, Josephine Taylor and Ken Farrish on their research projects.

TDA grant of \$35,000 expected in December 2016 will be used to expand our golden kiwifruit research plots and work with TAMU's Tim Hartmann.

Two International trips. One trip to New Zealand in May 2017 to visit during the kiwifruit harvest season to observe harvesting, processing, packing, and marketing strategies there. Second trip to China in July 2017 to present paper at the International Botanical Congress, visit ornamental nurseries and blueberry and kiwifruit farms in central China with colleagues of mine at the Nanjing Botanical Garden.

Dawn Stover

First, we'll need to build a big, brand new greenhouse at the Pineywoods Native Plant Center. Our funding is in place, so we're in good shape for this to happen – hopefully in April of 2017.

I'd like to create more "designed plant communities" in the SFA Gardens, using the style described in my new favorite book, "Planting in a Post Wild World" by Thomas Rainer and Claudia West.

I hope to continue our efforts to collect locally sourced native plants to be able to distribute appropriate plant material for our area, and to use in creating more pollinator gardens here at SFA and in Nacogdoches.

Lastly, with Greg's departure, I'm hoping to pull off a successful plant sale under only my direction. We have a wonderful army of volunteers and student workers who really make the sales happen, but Greg and I did share Commander in Chief duties.

Elyce Rodewald

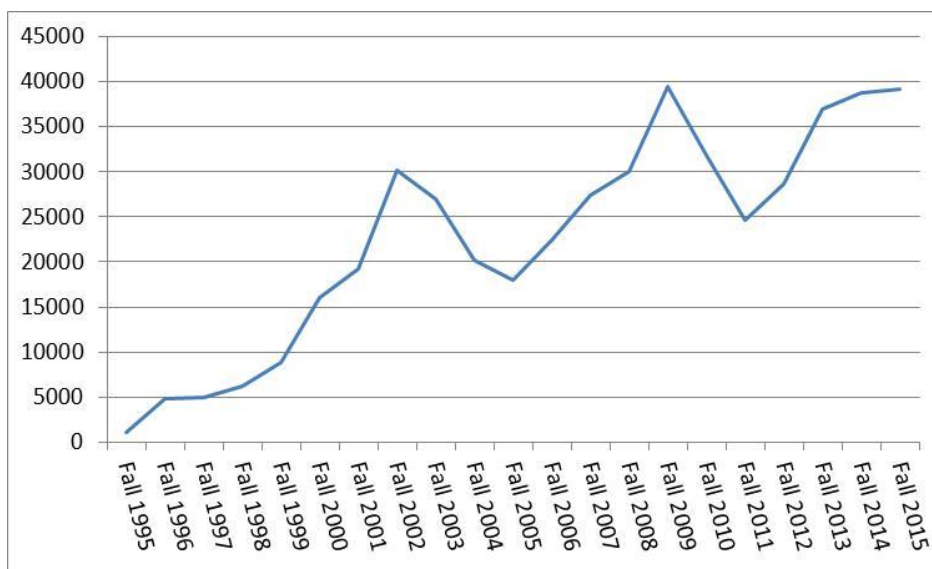
Increase gardening component of after school program

Review and revise learning excursions to incorporate more inquiry learning

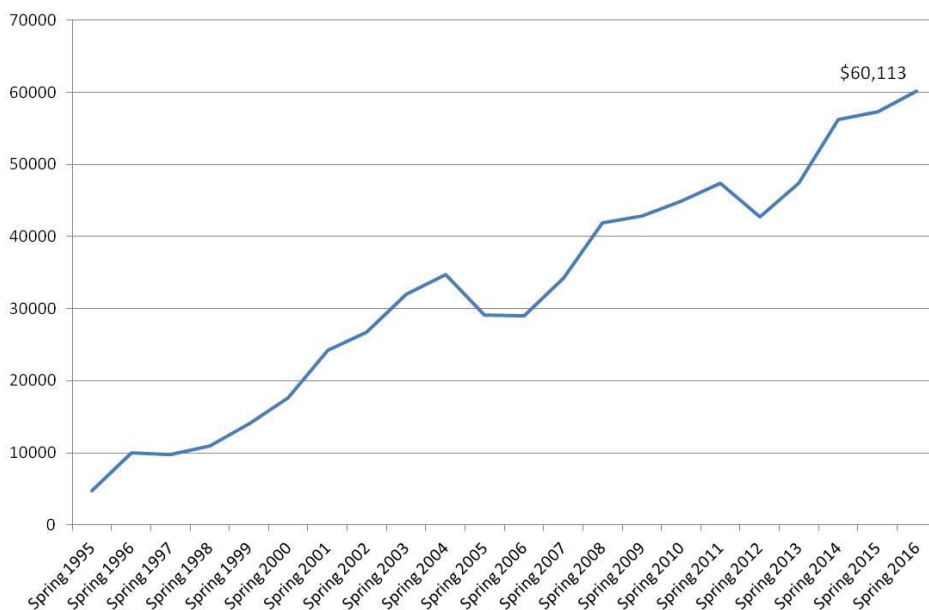
Integrate new education coordinator into all aspects of environmental education program

FALL 2015 AND SPRING 2016 PLANT SALES

SFA Gardens hosts two plant sales per year. They serve as a major source of funding for staff salaries and program development. This has surfaced as the record year since our plant sale began in spring 1986. \$39135 for Fall 2015; \$60113 for Spring 2016. \$99,248 total for fiscal year.



SPRING GARDEN GALA DAY SALES



2015-2016 LES REEVES LECTURE SERIES

SEPT 17 - Greg Grant / Dawn Stover - Is this the best Plant Sale in Texas or not? A Plant Sale Preview - SFA Gardens, Nacogdoches, TX - ggrantgardens@yahoo.com , dawnstover@sfasu.edu

OCT 8 – Leon Young - Making Dirt Work For You - SFA Soil and Plant Tissue Testing Laboratory, Nacogdoches, TX – lyoung@sfasu.edu

NOV 12 Heath Lowery - Numonics, the unabridged story of bee collapse and what we should all do. NuFarm Americas Inc., Hockley, TX heath.lowery@us.nufarm.com

DEC 10 – Dave Creech - Changes brewing at SFA Gardens; interesting plants, plans, and people. SFA Gardens, Nacogdoches, TX - dcreech@sfasu.edu

Jan 14 - Adam Black, University of Florida, Gainesville, FL and Manager of Xenoflora LLC. Made In Taiwan - Collecting Amazing New Plants For Gulf coast Landscapes. adamblack@ufl.edu

Feb11 – Danny Carson, Director of Gardens, Moody Gardens, Galveston, TX. Evolution Of The Moody Gardens Landscape. dcarson@moodygardens.org

Mar 10 – Tom Cox, Cox Arboretum, Canton, Georgia. Breaking New Ground With Conifers For The South. coxarb@bellsouth.net

Apr 14 - Dr. Mike Arnold, TAMU, College Station, Texas. Sifting Ashes For A Phoenix And Other Tales From The Former TAMU Horticulture Garden. ma_arnold@tamu.edu

May 12 – Dr. Lisa Alexander, Research Geneticist, The United States National Arboretum, McMinville, TN. Improving The World, One Plant At A Time. Lisa.Alexander@ars.usda.gov

June 9 – Greg Grant, PNPC, Research Associate, SFA Gardens, Nacogdoches, TX. Show Me Your Garden and I Shall Tell You What You Are -Twenty Years Creating One View. ggrantgardens@yahoo.com

Jul 14 – Ethan Guthrie, Atlanta Botanical Garden, Gainesville, GA. Yes, We Really Are The Atlanta Botanical Garden - But We're The One In Gainesville, Georgia. eguthrie@atlantabg.org

Aug 11 - Laura Miller, County Extension Horticulturist, Fort Worth, Texas. Ornamental Plants For A Drier And Hotter World. Immiller@ag.tamu.edu

DAVE CREECH (Sept 1, 2015 – Aug 31, 2016)



International

China, Aug 12 – Sept 2, 2015.
Consultancy to China, long term collaboration with Professors Yin Yunlong and YuHong of the Nanjing Botanical Garden, Nanjing, China. Presented five seminars seminars - 166 total in audience.

China, May 30 – June 14, 2016.
Consultancy to China, long term collaboration with above. Numerous meetings – presentations - with a focus on blueberries, Taxodium nurseries, kiwifruit, and pecans. 240

Presentations

Creech, David. Sept 18-21, 2015. Going bald is beautiful, an overview of Taxodium research at SFA Gardens. Conifer Society conference, Chatanooga, Tennessee. 110

Creech, David. Oct 5-6, 2015. Is there potential for Kiwifruit in Texas? Texas Fruit Growers conference. 210.

Creech, David. Oct 9-14, 2015.. XXX. Southern region International Plant Propagators Society (IPPS), Tampa, Florida.

Creech, David. Feb 4-6, 2016. Evaluation of Golden Kiwifruit, *Actinidia chinensis*, at SFA Gardens and Opportunities for Commercialization. ASHS-SR conference, San Antonio, TX. 22

Creech, David. Oct 22, 2015 . “Experiences in international Agriculture.” Guest lecture to Leon Young’s class. 15?

Creech, David. Nov 14, 2015. Camellias for Southern Gardens. Smith county Master Gardener Lecture Series, Tyler, TX. 76

Creech, David. Dec 10, 2015. Adventures in China. Dave Kulhavy class. 15

Creech, David. Dec 17, 2015. Landscape design, a primer. TAMU landscape short course, College Station, TX. 24.

Creech, David. Jan 21, 2016. New and exciting woodies for the Gulf South. Sugar Creek Country club, Houston, TX. 63.

Creech, David. Jan 26, 2016. The natives are restless. MG training on native plants, Montgomery country Master Gardeners, Conroe, TX. 82

Creech, David. Feb 16. Figs for East Texas. 45

Creech, David. Feb 24-26, 2016. SFA Gardens Overview. Texas Association Botanical Gardens and Arboreta conference, Galveston, TX. 107

Creech, David. March 11, 2016. Viburnums for the homescape. Houston Federation of Garden Clubs, Houston, Texas – 130.

Creech, David. March 17, 2016. New and exciting woodies for the Gulf South. Arbogate, Houston, Texas. 54

Creech, David. Mar 31, 2016. Breaking the mold with new plant materials at SFA Gardens. Athens Annual Spring Gardening conference, Henderson county Master Gardeners, Athens, Tx. 265.

Creech, David. Apr 6, 2016. International experiences in Agriculture. Guest lecture for Leon Young's class, SFA. 24.

Creech, David. Apr 7, 2016. Adventuresome Horticulture – Reflections on Biophilia behind the Iron Curtain. Lecture to faculty, staff and students. TAMU, College Station, TX. 84.

Creech, David. Apr 7, 2016. Genetic improvement of woody ornamentals and propagation tips and tricks. Guest lecture to a Horticulture class. 35.

Creech, David. April 19 and Apr 20, 2016. New, Interesting and Underutilized Woody Ornamentals for the South. Two lectures at Moore Farms and Botanical Gardens, South Carolina. 163 in two lectures.

Creech, David. June 24, 2016. Hosted the SFA Gardens "Industry Day" – Wild about Woodies. SFA Gardens, Nacogdoches, TX. 65

Creech, David. July 20-24, 2016. The Natives are Restless. Presentation to Cullowhee Native Plant Conference, Cullowhee, NC. 220

Creech, David. August 19, 2016. Figs for East Texas. East Texas Fruit and Vegetable Conference, TAMU, Overton, Texas. 65.

Total: 2316

Publications

Submitted to Plant Systematics and Evolution: Yuhong Zheng; Lei-hong Wang; Jun-xian Yang; Li Fu; David Creech. "Phylogeny of *Elaeagnus* L. based on morphology in China". Pending.

Creech, David. 2015. Influence of Three Pruning Strategies on Growth and Form of Three Taxodium Clones. **HortScience** 50(9): S33

Allen Owings, David Creech and Daniel Wells. 2015. Collecting and Evaluation New Lagerstroemia Cultivars in Louisiana and Texas. **HortScience** 50(9): S46

Chaoguang Yu, Yunlong Y, David L. Creech, and Huogen Li. 2016. Morphological characters and SRAP analysis of two hybrids between *Hibiscus dasycalyx* and Hibiscus 'Moy Grande'. *Scientia Horticulturae* 198:118-124.

Creech, David. 2015. Thirty years of Plant Evaluation: A Retrospective. Proceedings of the 2015 Southern Nurserymen's Research Conference 60: 215-224.
<http://www.sna.org/resources/Documents/15resprosec07.pdf>

Creech, David. 2015. Why go native? Fall 2015 Sawdust 42 (2): 7

Creech, David. 2015. Is there a future for kiwis in Texas. TNLA Green Nov-Dec 2015 17(6): 39-42.

Creech, David. 2016. *Spigellia marilandica* – Indian pink, a Jewel in the Forest. TNLA Green XVIII (4): 41 – 43.

Creech, David. 2016. Camellias for Southern Gardens. TNLA Green Jan-Feb 2016 XVIII (1): 49-50.

Greg Grant

SFA Gardens Annual Report

September 1, 2015-August 31, 2016



<< At the end of this year, Greg Grant accepted a position as a Texas Agrilife Horticulture Extension Agent for Tyler, a really terrific high impact position. We hate to lose Greg but there's one thing for sure. Greg's stamp on Horticulture in the Pineywoods will continue. For SFA Gardens, we continue forward. One door closes, another door opens. >>

Presentations:

November 12, 2016. "The Hole Truth" to the Nacogdoches County Master Gardeners Lunch and Learn. 87 in attendance.

November 6, 2016. "Heirloom Gardening for the South" to the Nacogdoches Garden Club. 23 in attendance.

October 10, 2015. "Long Live the Kings" to the 100th anniversary celebration at King's Nursery in Tenaha. 103 in attendance.

September 10, 2015. "Fall Sale Review" to the SFA Gardens Lecture Series in Nacogdoches. 50 in attendance.

September 11, 2015. "Let Me Introduce You" to the Houston Plant Conference in Houston. 100 in attendance.

September 17, 2015. "Texas Superstar Perennials, Roses, and Per-annuals" to the advanced Master Gardener training in San Antonio. 43 in attendance.

September 21, 2015. "Restoration Celebration" to the Texas A&M Landscape Design Study Course in College Station. 175 in attendance.

February 9, 2016. "Plant Breeding" to SFA horticulture class in Nacogdoches. 9 in attendance.

February 27, 2016. "Heirloom Gardening in the South" at the Mobile Botanic Garden in Mobile Alabama. 120 in attendance.

March 5, 2016. "Picking and Grinning" to the Gregg County Master Gardener Spring Conference in Longview. 200 in attendance.

March 19, 2016. "Greg Grant Introductions" at The Arbor Gate Nursery in Tomball. 25 in attendance.

April 14, 2016. "Gardening for the Birds and the Bees" to the Nacogdoches County Master Gardeners Lunch and Learn. 88 in attendance.

June 9, 2016. "Show me Your Garden and I Shall Tell You What You Are" to the SFA Gardens lecture series in Nacogdoches. 83 in attendance.

July 29, 2016. "Tree ID" to the Texas Forest Service certified arborist training in Tyler. 26 in attendance.

August 6, 2016. "Seed Saving" at the SFA Pineywoods Native Plant Center in Nacogdoches. 40 in attendance.

Total Lecture Attendance: 1,172

Tours:

September 23, 2015. PNPC tour to Christ Episcopal School students. 9 in attendance.

February 19, 2016. PNPC tour to international students organization. 12 in attendance.

March 30, 2016. PNPC tour to Gregg County Master Gardeners. 15 in attendance.

May 31, 2016. Arcadia garden tour to Garrison Methodist church group. 11 in attendance.

May 28, 2016. Arcadia bird walk to Tyler Master Naturalists. 20 in attendance.

Total Tour Attendance: 67

Publications:

Grant, Greg. Sizing Things Up. Neil Sperry's *Gardens*. September/October 2015.

Grant, Greg. My Hardwood Forest. *Texas Gardener*. September/October 2015. Volume XXXIV. Number 6.

Grant, Greg. My Grandparent's Texas Garden. *Southern Living*. November 2015.

Grant, Greg. A Balancing Act. Neil Sperry's *Gardens* November/December 2015

Grant, Greg. Cottage Garden Spring to Life. *Texas Gardener*. November/December 2015. Volume XXXV. Number 1.

Grant, Greg. The Story of the Maroon Bluebonnet. SFA Gardens Newsletter. Fall 2015.

Grant, Greg. A Field of Dreams. *Texas Gardener*. January/February 2016. Volume XXXV. Number 2.

Grant, Greg. Euell Gibbons. *Texas Gardener*. March/April 2016. Volume XXXV. Number 3.

Grant, Greg. Home on the Range. SFA Gardens Newsletter. Spring 2016.

Grant, Greg. Tigers on the Loose! *Texas Gardener*. May/June 2016. Volume XXXV. Number 4.

Grant, Greg. *Gardening Truly is the Best Medicine*. July/August 2016. Volume XXXV. Number 5.

Grant, Greg. Holy Anole. SFA Gardens Newsletter. Summer 2016.

Dawn Stover

Research Associate SFA Gardens



EDUCATION

Dec. 12, 2015 – “Fundamentals of Wreath and Swag Construction” - presentation, SFA HRT 322 Floriculture class, 20 attendees

Dec. 5, 2015 – “Deck the Halls” – workshop, SFA Gardens Saturday Seminar, 20 attendees

Jan. 8, 2016 - “The Importance of Pollinators” – presentation, Flora Garden Club, Nacogdoches, 30 attendees

Feb. 4, 2016 – “Greenhouse Production” – guest lecture, SFA HRT 213 Annuals and Perennials, 15 attendees

Feb. 18, 2016 – Ruby M. Mize Azalea Garden tour, San Augustine Master Gardeners, 10 attendees

Mar. 5, 2016 – FFA Nursery and Landscape Invitational Career Development Event at Houston Livestock Show and Rodeo – contest judge – 150 student attendees

Mar. 10, 2016 – “Perennials for Pollinators” – presentation, Nacogdoches County Master Gardener Lunch and Learn Seminar, 75 attendees

Mar. 30, 2016 – Mast Arboretum tour, Harrison Master Gardeners, 10 attendees

Apr. 5, 2016 – Mast Arboretum tour, Smith County Master Gardeners, 15 attendees

Apr. 7, 2016 – “Seed Germination” – guest lecture, SFA HRT 416 Plant Propagation, 10 attendees

Jun. 4, 2016 – “50 Nifty Perennials for Southern Gardens” – presentation, American Rose Society, Gardens of the American Rose Center, Shreveport, LA, 50 attendees

Jun. 23, 2016 – “Wild About Color: Planting for Pollinators” – presentation, Horticultural Field Trials, Overton Experiment Station, Overton, TX, 150 attendees

Jun 24, 2016 – “Industry Day: Wild About Woodies” – organize and host event, sponsored by Bailey Nurseries, 40 attendees

Jul. 11, 2016 – “#zone8mafia” – presentation, Cultivate '16, Columbus, Ohio, 50 attendees

TOTAL: 645

Publications

Stover, Dawn. 2016. Industry day at the SFA Gardens. TNLA Green 18 (3): 25,28.

COMMUNITY OUTREACH (120)

Nov. 6, 2015 – Texas Arbor Day – plant 99 pecan trees at Pecan Acres Park, 35 volunteers present

Feb. 26, 2016 – Green Forest Work Volunteer Tree Planting, NISD Ag Center, 110 trees planted, 35 student and community volunteers present

Apr. 30, 2016 – Garden Tour of Homes, Garden Capital of Texas committee, 50 attendees

Wrapped up S.F.A. Sculpture for All campaign. Started this next biennial campaign which will be installed in 2017.

Elyce Rodewald - Environmental Education Programming

Education Team

Coordinator: Elyce Rodewald

Assistant Coordinator: Kerry Lemon

Student Workers: Kelsey Brawner,
Alex Marquez, Faith Reyes, Trenton
Stiefel

Intern: Dalton McGinnis, Diana
Chavez, Haley Jacobs

Education Assistants: Jocelyn
Moore, Rebecca DeBardelaben, Savanna Jenkins, Chris Suehs, Izzabella Daniels,

SFA Garden Volunteers: Jackie Grant, Ray Goehring, Kathy Greer, Mary Beth
Hagood, Ruth Heino, Kay Jeffrey, Mary Louise Jobe, Marianne Young, Cindy Sims,
Pam Neely, Merry Anne Bright, DC Brown



Presentations

Coordinated and/or presented educational programs for SFA Gardens for over 13,000 participants. See table below.

Highlights include weekly after-school programs for Boys and Girls Club Members and Raguet Elementary School students, hands-on environmental education field trips for all Nacogdoches ISD elementary students grades K-5, outdoor family fun days, bi-monthly garden seminars, four weeks of summer camps and special events including the Little Princess Tea Party, Juneteenth Celebration, Healthy Nac Slam Jam and two FFA Career Development Events (horticulture judging contests).

SFA Student Involvement

Environmental Education programs at SFA Gardens advanced the University mission by enhancing excellence in teaching, learning, creative work and service and by creating new learning opportunities for SFA students. Three students completed required internships by participating as teachers in the after-school program or summer camp experience. Students enrolled in Dr. Alan Soward's and Leah Kahn's science methods courses also gained hands-on experience in curriculum development and

instruction in an outdoor classroom through their participation in Bugs, Bees, Butterflies and Blossoms and Wild About Science.

Community Partners

Pineywoods Audubon Society, Boys and Girls Club of Nacogdoches, Texas Forest Service, Boyette Consulting, City of Nacogdoches Parks and Recreation Department, Keep Nacogdoches Beautiful, Pineywoods Beekeepers Association, Texas Parks and Wildlife Department, US Forest Service, Nacogdoches Junior Forum, Nacogdoches Boys and Girls Club

Training

At SFA, attended SMUV training, CPM training, receipts and deposits training. Attended Learn, Go, Eat, Grow curriculum training workshop in January and August.

Service

Serve as co-chair of nutrition committee on the Healthy Nacogdoches Coalition
Served as member of Increasing K-12 Connections committee for SFA strategic planning

Grants and Funding

Managed Texas Parks and Wildlife COOP grant. Grant was completed 2016.

Managed SFA Garden Membership drive and supervised collection of fees for educational programs.

EDUCATIONAL PROGRAMMING

	2001- 2002	2002- 2003	2003- 2004	2004- 2005	2005- 2006	2006- 2007	2007- 2008	2008- 2009	2009- 2010	2010- 2011	2011- 2012	2012- 2013	2013- 2014	2014- 2015	2015- 2016
Adult Programs															
Arboretum/Azalea Garden/PNPC Tours	744	744	768	1334	1214	1343	863	1244	1499	908	460	1278	912	690	634
Les Reeves Lecture Series	980	860	709	823	922	751	824	789	811	780	802	809	982	820	788
Garden Seminars	83	158	184	175	32	45	57	65	32	145	396	142	206	178	155
Educator Workshops	24	186	23	121	183	225	455	110	160	30	43	88	0	147	60
Volunteer Training	25	35	13	45	29	11	30	18	10	8	12	26	11	0	2
Adult Special Events	1285	1927	1070	1508	1200	3281	1862	1350	1020	987	300	254	0	88	150
Lectures-outreach							3179	4232	2905	2388	3437	4738	5169	6189	2701
Sub-total	3141	3910	2767	4006	3580	5656	7270	7808	6437	5246	5450	7335	7280	8112	4490
Children's Programs															
Arboretum Adventures	917	546	820	733	1048	1120	771	1162	1377	784	546	514	588	543	626
Trees Are Terrific	2320	1246	962	622	1784	1750	2072	1795	552	921	717	0	0	0	0
Forest Awareness						450	600	1050	1200	1900	535	613	600	571	415
GardenQuest	398	644	381	0	525	182	316	80	320	175	0	28	120	130	182
Go Wild	174	690	924	549	711	772	803	752	549	540	499	473	495	521	538
Wild About Science (Go Native Field Day)	0	0	250	300	594	594	508	351	483	479	525	452	446	455	425
Earth Science Exploration						475	475	612	1076	869	796	447	462	520	557
School Gardening	66	0	0	0	0	0	0	120	0	0	0	473	495	0	0
Bugs, Bees, Butterflies and Blossoms	500	1000	2025	2640	2574	2816	2800	2800	2477	3292	3301	3523	3279	3395	3553
Pineywoods Day Camps	26	26	36	58	63	67	74	77	77	83	87	87	91	92	82
Children's Special Activities	571	1056	1538	1756	2004	200	350	800	882	115	804	2120	1902	1023	500
Wild About Wetlands	0	0	0	87	154	395	111	46	19	28	27	30	100	106	88
Nacogdoches Naturally-Family Day								193	520	500	893	1753	1888	1040	424
CDE (Career Development Education)						700	686	511	704	772	897	845	700	800	996
Nacogdoches Naturally-After school									503	495	648	1138	938	916	347
Sub-total	4972	5208	6936	6745	9457	9521	9566	10349	10739	10953	10275	12496	12104	10112	8733
Total	8113	9118	9703	10751	13037	15177	16836	18157	17176	16199	15725	19831	19384	18224	13223
Data shown are from September through August each year.															

DUKE PITTMAN



Duke Pittman is our lead Arboretum Technician. He is responsible for organizing the work load of our student assistants in the garden, irrigation, landscape maintenance, project development and keeping staff morale high.

Kerry Lemon Assistant Education Coordinator September 1, 2015 – August 31, 2016



Kerry Lemons held the SFA Gardens Assistant Education Coordinator position and she retired in August 2016.

REMEMBERING GREG GRANT AND KERRY LEMON

With two staff members moving on, I have included this document that appeared in the SFA Gardens Newsletter:

And then I looked around and they were gone . . .

Greg Grant, our long time plantsman at SFA Gardens has taken the Smith County Texas Agrilife Horticulture Extension position in Tyler, Texas. We will miss him professionally and miss him personally. Greg goes back to the early days of the

Arboretum and has seen this garden adventure grow and prosper. Greg's mark on this garden's psyche will last forever. We were lucky to have him here. Greg's talents are enormous. He's an award winning horticulturist, writer, conservationist, and seventh generation Texan from Arcadia, Texas. His roots and mine in Shelby county means our kinship is set in concrete. Greg is author of numerous books including, 1) Greg's Garden-A Pineywoods Perspective on Gardening, Nature, and Family and 2) Texas Fruit and Vegetable Gardening and 3) co-author of Heirloom Gardening in the South, Texas Home Landscaping, and The Southern Heirloom Garden, and, 4) he's finishing up The Rose Rustlers with Dr. Bill Welch. He also writes the popular "In Greg's Garden" column for Texas Gardener magazine and writes a "Greg's Ramblings" monthly blog at arborgate.com. His articles have also appeared in The San Antonio Express News, The Dallas Morning News, Country Living Gardener, Southern Living, and Neil Sperry's Gardens where he wrote for almost 30 years. He is a graduate of the Benz School of Floral Design, a member of the Garden Writers Association of America, and a lifetime member of the Native Plant Society of Texas, the Texas Bluebird Society, the Big Thicket Association, and the Southern Garden History Society where he serves on the board of directors.

No one is more eager to learn than Greg Grant. With a Masters in Horticulture from TAMU and post graduate classes from LSU, NCSU, and SFASU, that fact is obvious. Greg has had a varied career path. He was a horticulturist with Mercer Arboretum and San Antonio Botanical Gardens, an instructor at Stephen F. Austin and Louisiana State Universities, a horticulturist with the Texas Agricultural Extension Service, director of research and development at Lone Star Growers, and with the Antique Rose Emporium. Never known for staying in one spot too long, we can proudly say we had him the longest.

If you look at plants introduced that actually made a mark in the industry and the market, Greg wins the prize. Just a few of those include the Blue Princess verbena, dwarf pink Mexican petunia, Gold Star esperanza, Laura Bush and VIP petunias, John Fanick phlox, Stars and Stripes pentas, Pam's Pink honeysuckle, Lecompte and Flora Ann vitex, Henry and Augusta Duelberg sages, Big Momma and Pam Puryear Turk's cap, Peppermint Flare hibiscus, and the Marie Daly, Nacogdoches (Grandma's Yellow), and Climbing Belinda's Dream roses. He was presented the Superior Service Award by the Texas Agricultural Extension Service and the Lynn Lowery Memorial Award by the Native Plant Society of Texas for horticultural achievement in the field of native Texas plants. Heirloom Gardening in the South was a Garden Writers Association Silver Award recipient.

Greg has traveled extensively to hundreds of botanical gardens throughout the United States and Europe and has given over one thousand invited and, of course, very entertaining lectures. His garden, farm, and plant introductions have been featured in

many magazines and newspapers including Southern Living, Texas Gardener, Neil Sperry's Gardens, The Dallas Morning News, The Houston Chronicle, The Los Angeles Times, The San Antonio Express News, and Woman's Day.

Until this leap to Tyler, Greg has lived in deep East Texas in his grandparent's restored dogtrot farmhouse, where he tends a small cottage garden, his Rebel Eloy Emanis Pine Savanna and Bird Sanctuary, a little flock of laying hens, and terriers Acer, Lizzie, Mollie, and Sonny. Greg, we will miss you.

Kerry Lemon

When Kerry Lemon first approached me about retiring I said, "I forbid it." Well, that didn't work. Since 2000 she has made a huge impact on our environmental education found the resources to put her on short term contracts, primarily to handle varied summer camps for kids. She has served as camp director for the SFA Pineywoods Camp since 2002 and in that long span she has touched the lives of over 1000 children, ages 4-15. But enough was enough, and finally in July 2009 we placed her in a new part time position, Assistant Educational Coordinator for the SFA Gardens Environmental Education Programs. This was initially through a grant through the Texas Parks and Wildlife Department Community Outdoor Outreach Program. Since then, there's been a whirlwind of activities that have connected kids to nature. She served as Project Director of Nacogdoches Naturally, an outdoor adventure program that includes after-school, family weekend, and summer camp programs. As the coordinator of after-school programs, she provided kids with a healthy dose of hands-on science learning, exploring nature, developing outdoor skills and gardening. Kerry also managed outdoor family day through an Earth Day Celebration, Breakfast on the Farm (Farm and Forestry Day), Great Backyard Bird Count, and an Outdoor Adventures Day. Kerry is part of the reason our program has grown from just a few kids impacted to over 15,000 school age kids getting a chance to connect with the environment and horticulture. Kerry is certified in the National Archery in the Schools Program, Angler Education with TPWD, Project WILD, Project Learning Tree, and the Leopold Project. The list goes on.

After growing up in Austin, Kerry lived for seven years in California and spent a year studying in Madrid, Spain before returning to her southern roots and moving to East Texas in 1988. Kerry's experience as an educator spans over three decades, including work with special needs infants, in pre-school and elementary classrooms, training adults with developmental disabilities, teaching English as a second language, providing environmental education to children and adults, and homeschooling her own two children. Kerry has been certified to teach a variety of environmental education curricula including Project Wild, Project Aquatic Wet, Project Learning Tree, Keep Texas Beautiful-Waste in Place, and Leopold Project. She is certified through TPWD

in Angler education and as an archery instructor through the National Archery in the Schools Program. In addition, Kerry was trained in Wilderness First Responder through the Wilderness Medicine Institute and is currently certified as a canoe instructor through the American Canoe Association. She speaks Spanish although she admits to being a bit rusty these days.

Kerry has lived with her husband and two children in a hand built off-the-grid home for the past 22 years. This untraditional lifestyle has contributed to her love of nature and commitment to sustainable land ethics. She has gardened extensively for many years learning about growing flowers and vegetables in the trenches and arriving at the conclusion that there is always so much more to learn from the plant world. Her family has traveled across the country (as well as to Mexico and Greece) camping, backpacking, canoeing, and hiking. She has a deep connection with the natural world and an appreciation for the gift of “wilderness” in her life. For her time here, she’s been personally and professionally committed to connecting children and families with the natural world through outdoor educational and recreational experiences. We will miss her.

THE YEAR IN REVIEW SEPT 1, 2015- AUG 31, 2016

Our first visiting scientist, Yuhong Zheng, 'Jade', arrived in August 2015, our first visiting scientist for 2015-2016. She is an associate professor from Nanjing, China on a one year scholarship from the Chinese Academy of Science. She will be tackling various research projects. One project involves looking at the DNA of our amazing collection of Taxodiums, bald cypress.



The Gayla Mize Gazebo gets a facelift on the South side of the Agriculture building – the fine carpentry of Chris Dempsey



Trialing garden gets a face lift - Chris Dempsey in action smoothing our raised beds in the trialing garden at the North end of the Mast Arboretum – Spring 2016



Big thank you to Sam Pollard's Texas Pecan Nursery for donating 15 varieties and multiples of each - and for the City allowing SFA Gardens to add over 100 trees to Pecan Acres Park. One or two waterings in the summer of 2016 and they survived!



July 8 2016. Inspecting the *Hibiscus dasycalyx* research plot at Mill Creek Gardens with Amber Miller, USFW, Austin, TX – and Clay Sunda, S.B. Hayter Trust land manager. This is part of our endangered plant research program. We call it the “Three R’s” – Rescue, Research and Reintroduction



Ethan Guthrie, Atlanta Botanical Garden, lecturing at the Ina Brundrett Conservation Education building. The building serves as the center of our educational effort which includes the monthly Theresa and Les Reeves lecture series, special seminars and workshops, and our environmental education program for K-12.



The Ina Brundrett Conservation Education Building is the center of all the SFA Gardens educational programming.



Crape myrtle trials at SFA Gardens are by the Coliseum parking lot



Blueberry variety and selection trials at the North end of the Pineywoods Native Plant Center



Anne Sullivan is our new Program Associate and she came on board in May, 2016. She is responsible for understanding and managing the myriad of accounts of the SFA Gardens, the many details of the varied programs of the Garden, and dealing calmly with crisis management.



Kerry Lemons retired in August 2016 and her effort report has been meshed with the report of Elyce Rodewald. She held the SFA Gardens Environmental Education Program Coordinator position and we will miss her.



Taxodium Evaluation at SFA Gardens continues with a great growth year for trees along LaNana creek. T406 continues to be our favorite – no knees, nice form, and very resistant to Cercopteris leaf blight. May be the best of the hybrid cypress we are evaluating from the program at the Nanjing Botanical Garden in China.



Aug 8, 2016 – field expedition to the home of *Magnolia pyramidata*



The fig collection at SFA Gardens along LaNana creek and the intramural field is now back in action after a year in limbo. We've added sand, improved the drainage and have accumulated new varieties for the planting. Image in Aug 2016.



August 9, 2016 – Greg Grant supervising our nursery pad expansion. New irrigation system on a controller and a fine firm platform for plant growing.



Gayla Mize Garden – new plants and drainage improvement in the garden. Koromo Shikibu in full bloom on the University Drive face of the garden

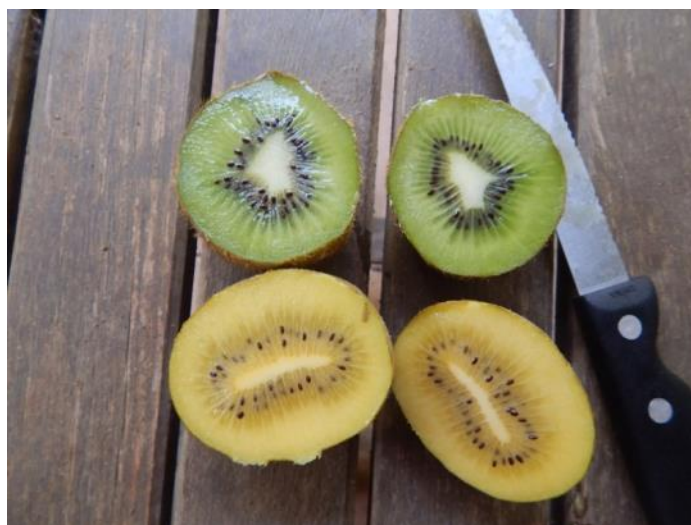


Mast Arboretum – a new trialing garden – new plants and better maintenance



GOLDEN KIWIFRUIT – THE FIRST EVER CROP IN TEXAS!

Brock Vinson in Sept 2015 harvesting our second and biggest crop of golden kiwifruit! Plots are along LaNana creek and Starr Avenue and we harvested 880 lbs from about that many square feet of canopy = about 20 tons per acre extrapolated. Best variety is 'Golden Dragon' in terms of yield. We added new rows and posts. A proposal submitted to the Texas Department of Agriculture, Specialty Crops Block Grant, with TAMU Horticulture's Tim Hartmann as co-PI was submitted in the spring 2016 and word received that it was approved. The \$35,000 award will be beginning Dec 1, 2016. In Aug 2016, Colin and Elisabeth Stevenson, Auckland, NZ – Miko Asia, Ltd. visiting our region for potential joint venture growing their proprietary varieties. Will golden kiwis be a commercial crop in Texas? Time will tell.



MOODY GARDENS PROJECT

With a grant from the Moody Foundation our work began in the Spring 2016. It's a wonderful full sun spot by Moody Gardens just on the South side of the Airport, a big open field and only 4 to 5 feet above sea level. Elaine Harris is beginning her MS thesis project here under the direction of Dr. Ken Farrish. Elaine Fowler MS thesis under the direction of Dr. Steve Wagner in Biology. Sabino Bilon and Jose Flores of Moody Garden are great help in getting the first of our collection together!



MEXICO MOUNTAIN SUGAR MAPLE PROJECT

Acer skutchii – the rare Mexico Mountain Sugar maple plots at the Science Research Center showing the effects of a terrible dry spell . . . 09-27-2015 image and a drought since June. This amazing tree is very drought and alkaline tolerant and has great promise in Central Texas and other harsh climates.



Environmental Education at the SFA Gardens in 2015-2016



Standouts in 2015-2016



Cleome 'Senorita Rosalita'



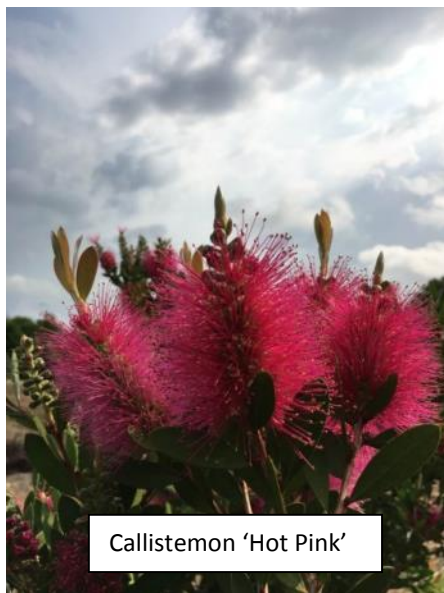
Gomphrena 'Fireworks'



Gulf Fritillary on Little Bluestem 'Standing Ovation'



Hibiscus dasycalyx at Boggy Slough, Texas

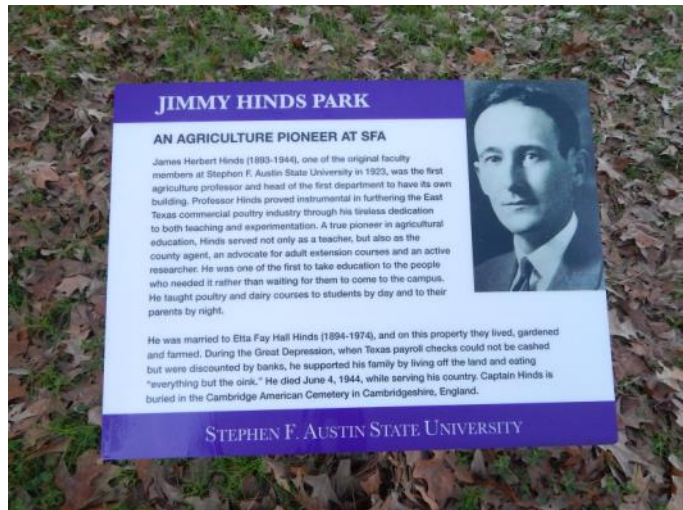


Callistemon 'Hot Pink'



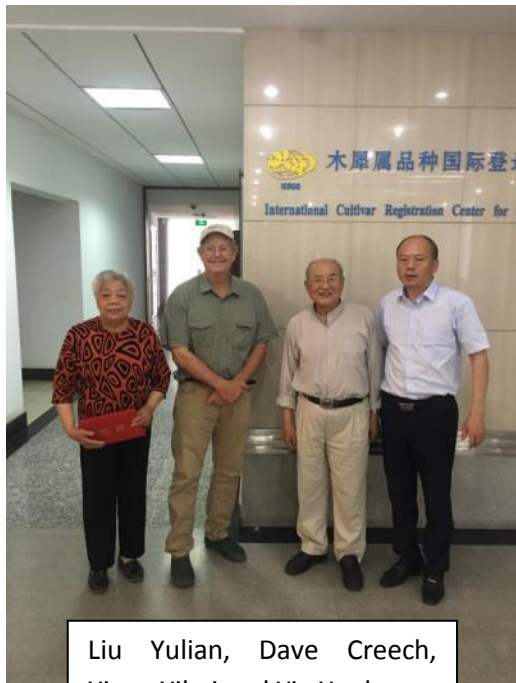
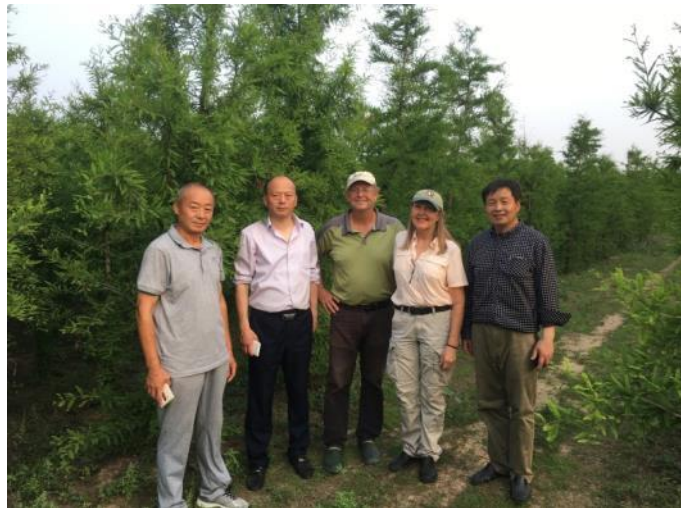
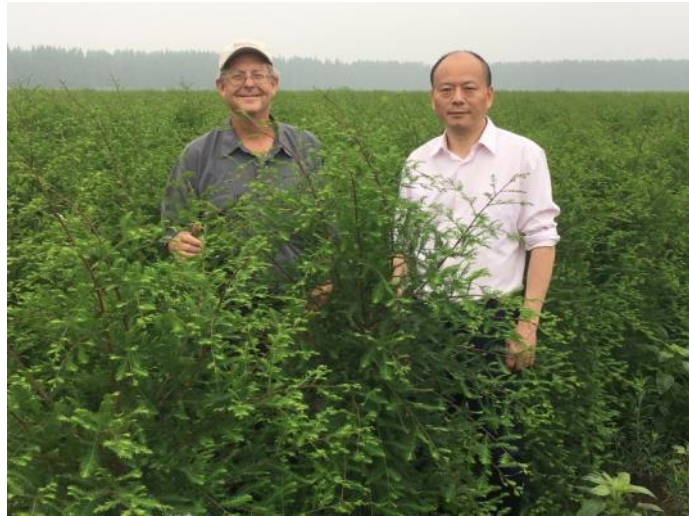
Acer fabri

Jimmy Hinds Park Development is funded via a gift from Barbara Finney. A major goal for the year was to bring irrigation to the 2 acre patch, install an interpretive sign, and create a world class muscadine grape vineyard (56 varieties and counting). We also painted the boardwalk with grit paint to be more ADA compliant.



CHINA

June 2016 consultancy to China with a focus on Taxodium and Blueberries



Liu Yulian, Dave Creech,
Xiang Xibai and Yin Yunlong –
Sweet Olive Research Center



Shangdong coal pit Taxodium planting

Minland Farms near Shanghai

