

Stephen F. Austin State University

Senior Exit Survey Report

Fall 2013

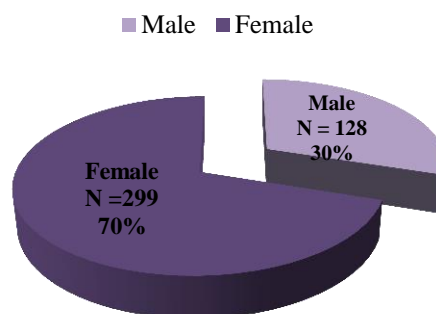
The Senior Exit Survey was delivered electronically to students' SFA e-mail address via Qualtrics. There were a total of 802 undergraduate seniors in fall 2013. Three students were excluded from the survey because their e-mail addresses were not available in the student database. Therefore the target survey population was 799. A total of 467 (58.4% of the target population) students started the survey, and 427 (53.5% of the target population) completed the survey. The completion rate for those who started the survey was 91.4% (427 students), with 38 students (8.6%) partially completing the survey.

The original e-mail survey solicitations were sent on September 25th. Because students were able to apply after the graduation application due date, e-mails were sent to new late applicants on October 24th and December 5th. Each round of survey solicitation was followed by two reminder emails. The survey was closed on December 13th, one day prior to winter commencement.

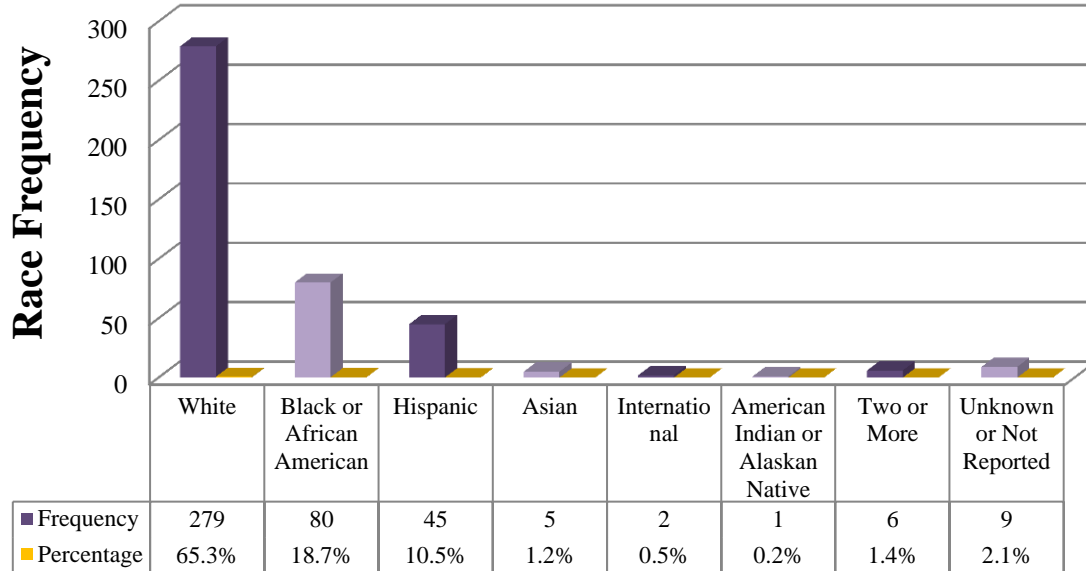
For this administration, the questions provided by colleges, departments, and student services were not included in the survey due to an error in the survey setup in Qualtrics. Future administrations of the survey will include these questions.

A total of 128 males (29.98%) and 299 females (70.02%) took the survey. There were 279 white (65.3%), 80 Black or African American (18.7%), 45 Hispanic (10.5%), 5 Asian (1.2%), 2 International (0.5), 1 American Indian or Alaskan Native (0.2%), 6 Two or More racial (1.4%), and 9 Unknown or Not Reported (2.1%) respondents.

Senior Exit Survey Gender

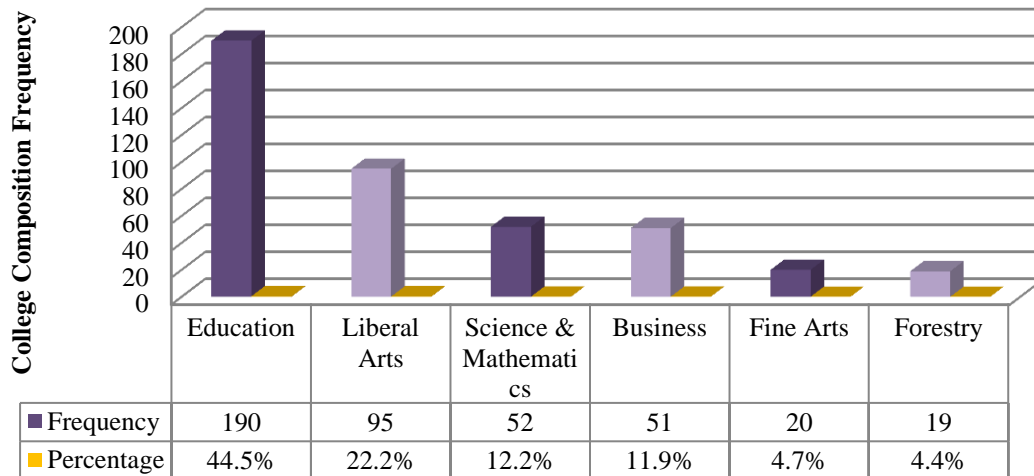


Senior Exit Survey Student Race

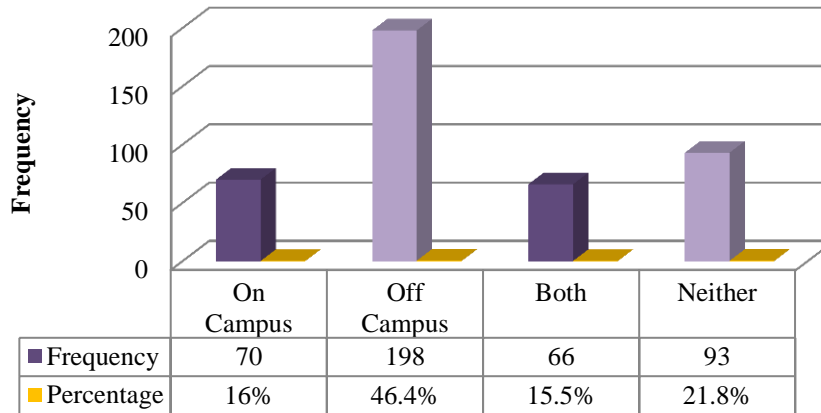


Fifty-one (11.9%) students were from the College of Business, 190 (44.5%) from the College of Education, 20 (4.7%) from the Fine Arts, 19 (4.4%) from the Forestry, 95 (22.2%) from the Liberal & Fine Applied Arts, and 52 (12.2) from the Sciences & Mathematics.

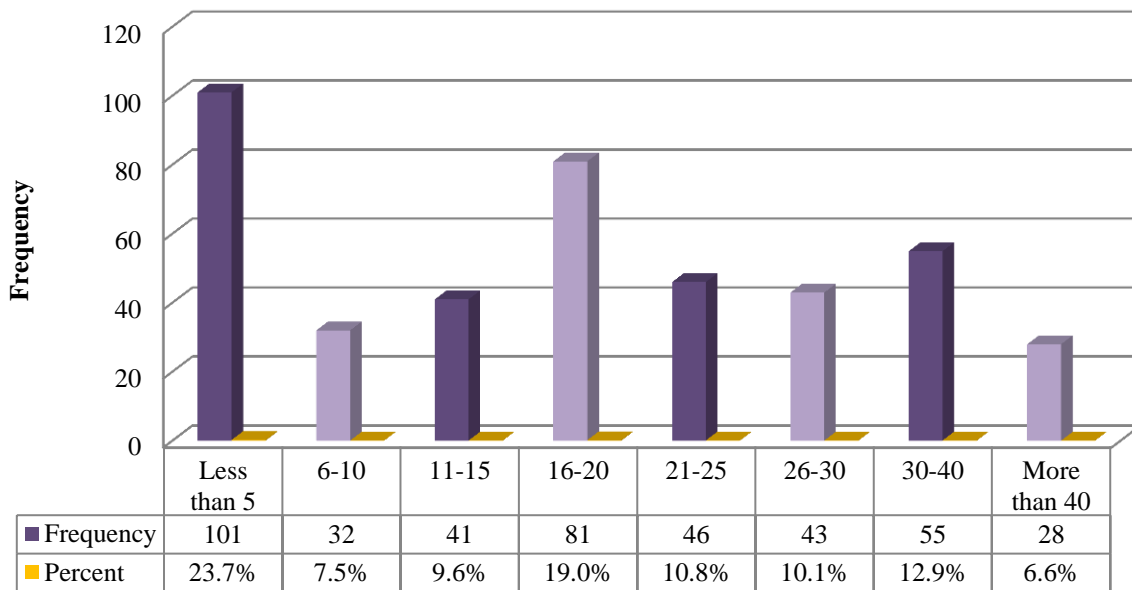
Senior Exit Survey Colleges



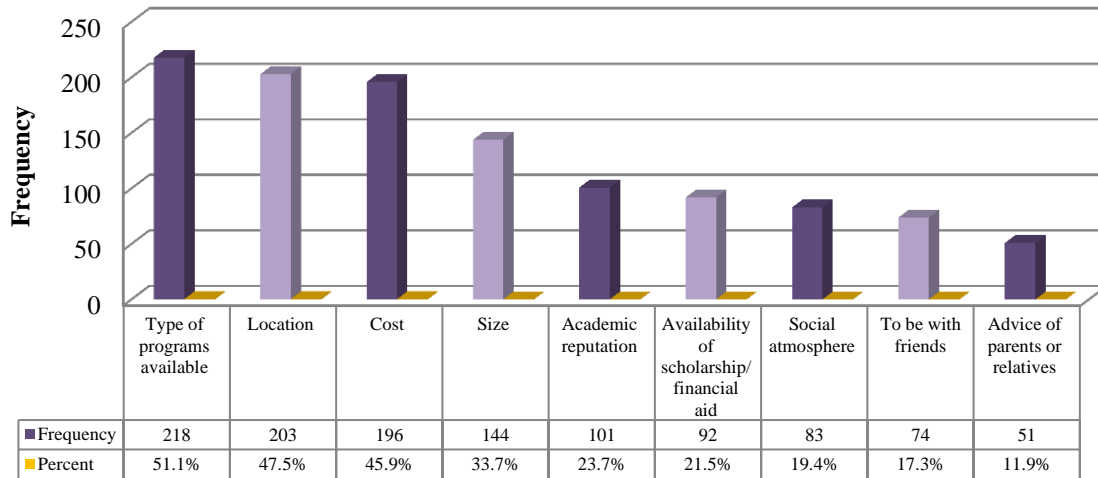
While enrolled at SFA, I was working



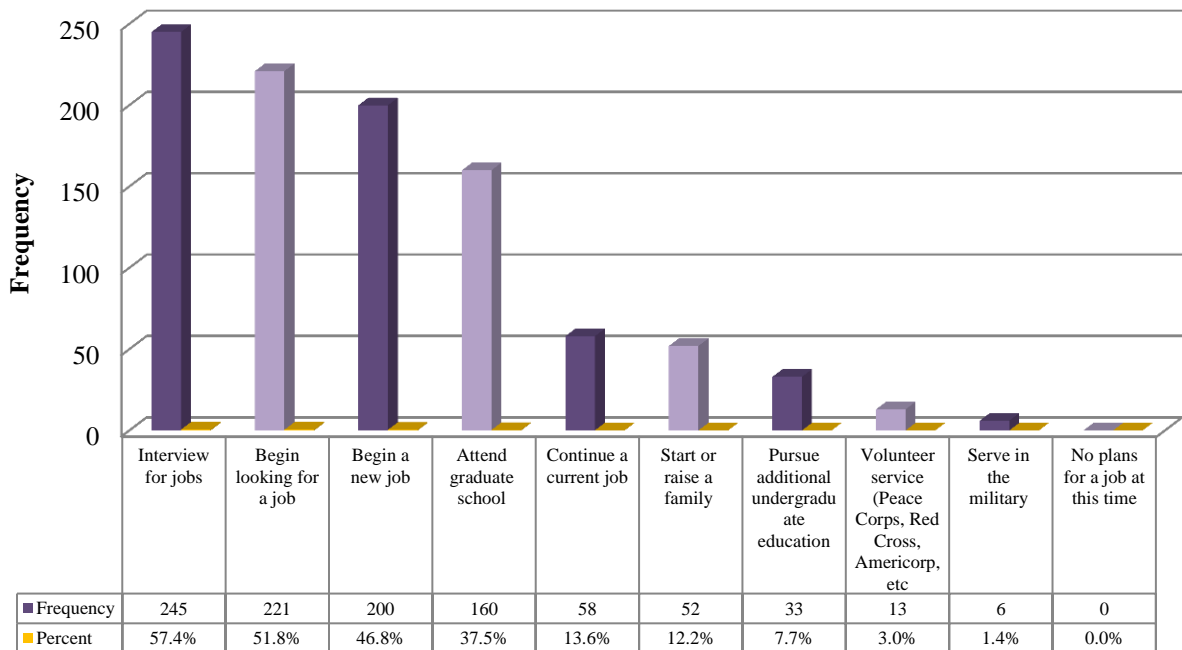
While enrolled at SFA, I worked an average of ___ hours per week.



What were the three most important reasons for staying at SFA?



What are your plans after graduation (check all that apply)?



I. Overall Close-end Question Responses:

1. SFA Student General Experience

Please tell us about your experience at SFA.		N	Mean
(Strongly Agree - Strongly Disagree; 5-1)			
1.	I felt a sense of community in my time at SFA.	427	4.17
2.	If I could start college over, I would still choose SFA.	427	4.09
3.	If I could start college over, I would choose to graduate with the same major.	427	4.17
4.	I would definitely recommend SFA to others.	427	4.38
5.	Overall, I had a satisfying educational experience at SFA.	427	4.41

2. SFA Student Experience with Fellow Students

Please tell us about your experience with fellow students in your major during your study at SFA.		N	Mean
(Strongly Agree - Strongly Disagree; 5-1)			
1.	Students in my major are competitive with each other.	417	3.90
2.	Students in my major are supportive and help each other meet the academic demands of the program.	423	4.27
3.	Students in my major are interested in a broad range of ideas from many disciplines.	418	4.12
4.	Students in my major are career oriented.	419	4.31
5.	Students in my major communicate effectively.	422	4.20
6.	Students in my major are academically honest.	417	4.26
7.	Students in my major are willing to contribute to group work.	423	4.18
8.	Students in my major are motivated to learn.	417	4.32

3. SFA Student Experience with Faculty

Please tell us about your experience with faculty in your major at SFA.		N	Mean
(Strongly Agree - Strongly Disagree; 5-1)			
1.	Faculty have good instructional skills.	427	4.33
2.	Faculty are effective teachers.	427	4.35
3.	Faculty are interested in the personal development of students.	427	4.39
4.	Faculty are interested in the academic development of students.	427	4.39
5.	Faculty are interested in the professional, and career development of students.	427	4.36
6.	Faculty introduce students to a broad range of ideas, perspectives and worldviews.	427	4.37
7.	Faculty respond to undergraduate students regarding their needs, concerns, and suggestions.	427	4.28
8.	Faculty are knowledgeable about what they are teaching.	427	4.50
9.	I found my major academically stimulating.	427	4.42

10.	I found my major to be characterized by mutual respect between undergraduate majors and professors.	427	4.38
11.	Students are encouraged to participate in professional clubs and organizations.	427	4.28
12.	Students are encouraged to attend professional seminars and presentations.	427	4.27
13.	Students are encouraged to become familiar with current and emerging technology.	427	4.26
14.	Students are encouraged to participate in research or creative projects with faculty or other students.	427	4.20
15.	Students are encouraged to become acquainted with the department's faculty.	427	4.26

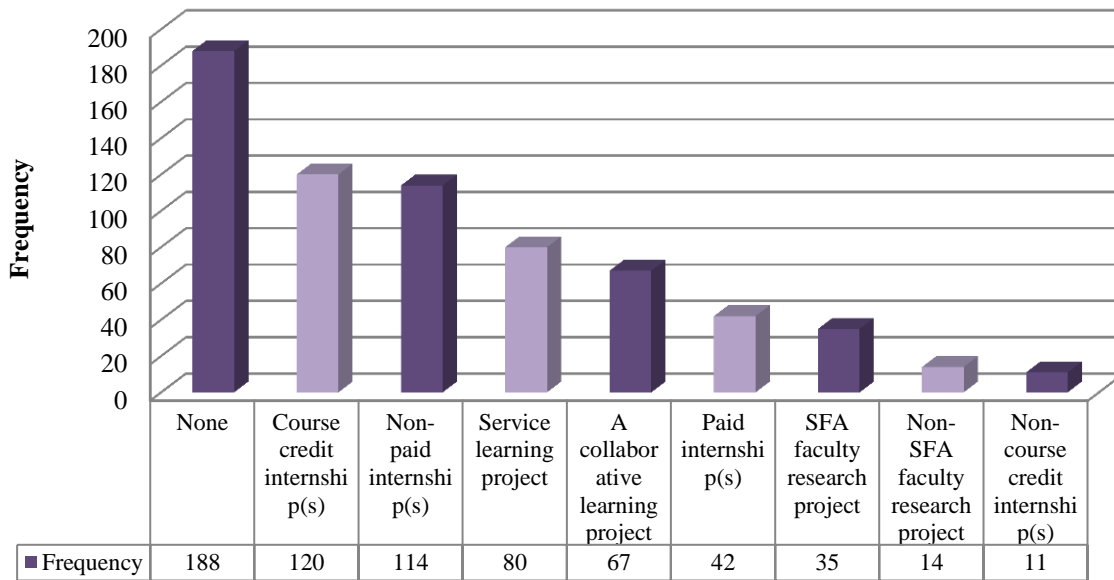
4. SFA Student Experience with Campus Services

Please tell us about your level of satisfaction with the following SFA Services:		N	Mean
(Strongly Agree - Strongly Disagree; 5-1)			
1.	Admissions	415	4.08
2.	The Business Office	420	3.95
3.	Academic Advising	421	4.04
4.	Student Financial Aid services	396	3.68
5.	Registrar	421	3.92
6.	Disability Services	195	3.82
7.	Counseling Services	261	3.96
8.	Multicultural Affairs	222	3.81
9.	Access to Electronic Library Resources (database, electronic journals and books)	399	4.23
10.	Library Staff	368	4.13
11.	Library Holdings	318	4.07
12.	Library Facilities	387	4.15
13.	SFA Campus Dining (Food Services)	354	3.64
14.	Resident Hall Facilities	305	3.66
15.	Resident Hall Services	304	3.72
16.	Greek Experience (fraternity/sorority)	223	3.80
17.	Leadership and Service Programs (ODK, MLK Day)	240	3.91
18.	Campus Clubs/Organizations (Academic/Nonacademic)	323	4.14
19.	Campus Bookstore (Barnes & Noble)	404	3.84
20.	Pine Log--Campus Newspaper	312	3.96
21.	Campus Recreational Services	364	4.32
22.	Student Rights & Responsibilities	345	4.06
23.	Career Services	342	4.09
24.	Students' Health Services	324	3.78
25.	Parking Services	384	2.90
26.	Parking Facilities	393	2.98
27.	Parking Availability	386	2.45

28.	Campus Security	383	3.90
29.	Veterans Resource Center	187	3.81
30.	New Student Orientation	340	3.94

5. SFA Student Self-Report in Participating Programs

Please indicate your participation in the programs given below (check all that apply):



6. SFA Student Perception of Knowledge/Skills Gained

As a result of studying at SFA, how much progress do you feel you have made in the following areas? (Excellent -Poor, 5-1)	N	Mean
1. Communication Skills - effective development, interpretation, and expression of ideas through written, oral and visual communication	427	4.26
2. Empirical and Quantitative Skills - the manipulation and analysis of numerical data or observable facts in informed conclusions	427	4.01
3. Teamwork - the ability to consider different points of view and to work effectively with others to support a shared purpose or goal	427	4.24
4. Personal Responsibility - the ability to connect choices, actions, and consequences to ethical decision-making	427	4.34
5. Social Responsibility - intercultural competence, knowledge of civic responsibility, and the ability to engage effectively in regional, national, and global communities	427	4.19
6. Critical Thinking Skills - creative thinking, innovation, inquiry, analysis, evaluation, and synthesis of information	427	4.21

II. Close-end Question Responses Compared among Colleges

(Note: 1. The statement marked with ‘*’ shows statistical significant differences at 95% confidence level, and ‘**’ shows 99% confidence level, ‘***’ shows above 99.9% or above confidence level; 2. The statement with significant differences among the colleges are sorted in descending fashion):

1. SFA Student General Experience

Please tell us about your experience at SFA.

(Strongly Agree - Strongly Disagree; 5-1)

	Colleges	N	Mean	F Ratio and Sig
** I felt a sense of community in my time at SFA.	ED	190	4.31	
	SM	52	4.27	
	BU	51	4.16	F (5,421)
	FA	20	4.05	= 3.117
	LA	95	3.96	<i>p</i> = .009
	FR	19	3.68	
	Total	427	4.17	
** If I could start college over, I would still choose SFA.	ED	190	4.27	
	SM	52	4.21	
	BU	51	3.96	F (5,421)
	LA	95	3.87	= 3.14
	FA	20	3.75	<i>p</i> = .009
	FR	19	3.74	
	Total	427	4.09	
If I could start college over, I would choose to graduate with the same major.	BU	51	4.18	
	ED	190	4.24	
	FA	20	4.15	F (5,421)
	FR	19	4.16	= 1.60
	LA	95	3.91	<i>p</i> = .16
	SM	52	4.38	
	Total	427	4.17	
I would definitely recommend SFA to others.	BU	51	4.47	
	ED	190	4.45	
	FA	20	4.20	F (5, 421)
	FR	19	4.05	= 2.15
	LA	95	4.23	<i>p</i> = .06
	SM	52	4.48	
	Total	427	4.38	
*Overall, I had a satisfying educational experience at SFA.	SM	52	4.52	
	ED	190	4.48	
	BU	51	4.45	F (5, 421)
	FA	20	4.25	= 2.56
	LA	95	4.23	<i>p</i> = .027
	FR	19	4.21	
	Total	427	4.41	

2. SFA Student Experience with Fellow Students

Please tell us about your experience with fellow students in your major during your study at SFA.

(Strongly Agree - Strongly Disagree; 5-1)

	Colleges	N	Mean	F Ratio and Sig
***Students in my major are competitive with each other.	FA	20	4.45	
	SM	52	4.33	
	BU	50	4.06	F (5, 411)
	ED	185	3.84	= 5.08
	FR	17	3.65	<i>p</i> = .000
	LA	93	3.62	
	Total	417	3.90	
***Students in my major are supportive and help each other meet the academic demands of the program.	ED	188	4.45	
	SM	52	4.44	
	BU	50	4.18	F (5, 417)
	FR	19	4.11	= 6.33
	FA	20	4.00	<i>p</i> = .000
	LA	94	3.96	
	Total	423	4.27	
Students in my major are interested in a broad range of ideas from many disciplines.	BU	50	4.04	
	ED	184	4.22	
	FA	20	4.00	F (5, 412)
	FR	17	4.18	= 1.17
	LA	95	3.98	<i>p</i> = .32
	SM	52	4.17	
	Total	418	4.12	
***Students in my major are career oriented.	SM	52	4.58	
	ED	187	4.42	
	BU	50	4.42	F (5, 413)
	FR	17	4.24	= 7.34
	FA	20	4.00	<i>p</i> = .000)
	LA	93	3.97	
	Total	419	4.31	

3. SFA Student Experience with Faculty

Please tell us about your experience with fellow students in your major during your study at SFA.

(Strongly Agree - Strongly Disagree; 5-1)

	Colleges	N	Mean	F Ratio and Sig
***Students in my major communicate effectively.	SM	52	4.40	
	ED	189	4.34	
	BU	50	4.14	F (5, 416)
	LA	93	4.00	= 5.22
	FR	19	3.79	$p = .000$
	FA	19	3.68	
	Total	422	4.20	
***Students in my major are academically honest.	SM	51	4.45	
	ED	185	4.42	
	BU	50	4.22	F (5, 411)
	FA	20	4.00	= 4.85
	LA	93	4.00	$p = .000$
	FR	18	3.94	
	Total	417	4.26	
*Students in my major are willing to contribute to group work.	SM	52	4.44	
	ED	189	4.24	
	BU	50	4.16	F (5, 417)
	LA	94	4.02	= 2.71
	FR	18	4.00	$p = .02$
	FA	20	3.80	
	Total	423	4.18	
***Students in my major are motivated to learn.	BU	50	4.28	
	ED	186	4.41	
	FA	20	4.20	F (5, 411)
	FR	17	4.24	= 6.58
	LA	93	4.02	$p = .000$
	SM	51	4.67	
	Total	417	4.32	

**Please tell us about your experience with
faculty in your major at SFA.**

(Strongly Agree - Strongly Disagree; 5-1)

	Colleges	N	Mean	F Ratio and Sig
*Faculty have good instructional skills.	FA	20	4.50	F (5, 421) = 2.79 <i>p</i> = .017
	SM	52	4.46	
	ED	190	4.40	
	BU	51	4.27	
	LA	95	4.21	
	FR	19	3.89	
	Total	427	4.33	
**Faculty are effective teachers.	FA	20	4.55	F (5, 421) = 3.42 <i>p</i> = .005
	SM	52	4.44	
	ED	190	4.43	
	LA	95	4.27	
	BU	51	4.22	
	FR	19	3.84	
	Total	427	4.35	
*Faculty are interested in the personal development of students.	SM	52	4.54	F (5,421) = 2.36 <i>p</i> = .039
	ED	190	4.46	
	FA	20	4.40	
	BU	51	4.29	
	LA	95	4.27	
	FR	19	4.00	
	Total	427	4.39	
**Faculty are interested in the academic development of students.	SM	52	4.58	F (5,421) = 3.33 <i>p</i> = .006
	ED	190	4.49	
	FA	20	4.40	
	LA	95	4.27	
	BU	51	4.22	
	FR	19	4.00	
	Total	427	4.39	
**Faculty are interested in the professional, and career development of students.	SM	52	4.52	F (5,421) =3.81 <i>p</i> = .002
	ED	190	4.49	
	BU	51	4.27	
	FA	20	4.25	
	LA	95	4.19	
	FR	19	3.89	
	Total	427	4.36	

Please tell us about your experience with faculty in your major at SFA. (Strongly Agree - Strongly Disagree; 5-1)	Colleges	N	Mean	F Ratio and Sig
**Faculty introduce students to a broad range of ideas, perspectives and worldviews.	BU	51	4.33	
	ED	190	4.44	
	FA	20	4.15	F (5,421)
	FR	19	4.05	= 3.15
	LA	95	4.23	<i>p</i> = .008
	SM	52	4.60	
	Total	427	4.37	
**Faculty respond to undergraduate students regarding their needs, concerns, and suggestions.	SM	52	4.46	
	ED	190	4.41	
	FA	20	4.30	F(5,421)
	BU	51	4.16	= 4.27
	LA	95	4.09	<i>p</i> = .001
	FR	19	3.74	
	Total	427	4.28	
Faculty are knowledgeable about what they are teaching.	BU	51	4.41	
	ED	190	4.55	
	FA	20	4.70	F(5, 421)
	FR	19	4.42	= 2.22
	LA	95	4.36	<i>p</i> = .05
	SM	52	4.63	
	Total	427	4.50	
I found my major academically stimulating.	BU	51	4.35	
	ED	190	4.49	
	FA	20	4.50	F (5, 421)
	FR	19	4.16	= 1.69
	LA	95	4.29	<i>p</i> = .136
	SM	52	4.52	
	Total	427	4.42	
**I found my major to be characterized by mutual respect between undergraduate majors and professors.	FA	20	4.50	
	SM	52	4.50	
	ED	190	4.45	F(5, 421)
	BU	51	4.41	= 3.41
	LA	95	4.23	<i>p</i> = .005
	FR	19	3.84	
	Total	427	4.38	

Please tell us about your experience with faculty in your major at SFA.

(Strongly Agree - Strongly Disagree; 5-1)

	Colleges	N	Mean	F Ratio and Sig
Students are encouraged to participate in professional clubs and organizations.	BU	51	4.06	
	ED	190	4.31	
	FA	20	4.20	F (5, 421)
	FR	19	4.16	= 1.52
	LA	95	4.28	<i>p</i> = .18
	SM	52	4.48	
	Total	427	4.28	
***Students are encouraged to attend professional seminars and presentations.	SM	52	4.56	
	FA	20	4.55	
	ED	190	4.37	F (5, 421)
	FR	19	4.16	= 5.48
	LA	95	4.02	<i>p</i> = .000
	BU	51	3.98	
***Students are encouraged to become familiar with current and emerging technology.	Total	427	4.27	
	SM	52	4.60	
	ED	190	4.37	
	FR	19	4.21	F (5,421)
	LA	95	4.06	= 5.38
	FA	20	4.05	<i>p</i> = .000
	BU	51	3.98	
***Students are encouraged to participate in research or creative projects with faculty or other students.	Total	427	4.26	
	SM	52	4.60	
	ED	190	4.28	
	LA	95	4.11	F (5, 421)
	FR	19	4.05	= 5.47
	FA	20	4.05	<i>p</i> = .000
**Students are encouraged to become acquainted with the department's faculty.	BU	51	3.78	
	Total	427	4.20	
	SM	52	4.54	
	ED	190	4.34	
	LA	95	4.19	F(5, 421)
	FA	20	4.15	= 3.34
	BU	51	4.04	<i>p</i> = .006
Total	427	4.26		

4. SFA Student Experience with Campus Services

Thirty questions are used to evaluate students' satisfactory level about the SFA services. The following table only lists the statements drawn significant differences from students' responses among the colleges.

Please tell us about your level of satisfaction with the following SFA Services.				
(Very Satisfied - Very Dissatisfied; 5-1)	Colleges	N	Mean	F Ratio and Sig
*Academic Advising	SM	50	4.26	
	ED	189	4.17	
	FA	20	4.00	F (5, 415)
	BU	49	3.98	= 2.94
	FR	19	3.95	<i>p</i> = .01
	LA	94	3.70	
	Total	421	4.04	
*Library Staff	SM	47	4.36	
	ED	151	4.21	
	LA	91	4.10	F (5, 362)
	FA	19	3.95	= 2.87
	BU	44	3.84	<i>p</i> = .02
	FR	16	3.75	
	Total	368	4.13	
*Library Holdings	SM	37	4.38	
	ED	129	4.16	
	FA	19	4.05	F (5, 312)
	BU	35	3.91	= 2.40
	LA	84	3.89	<i>p</i> = .04
	FR	14	3.86	
	Total	318	4.07	
***SFA Campus Dining (Food Services)	ED	154	3.90	
	SM	44	3.73	
	FA	18	3.67	F (5, 348)
	LA	82	3.41	= 4.63
	BU	40	3.38	<i>p</i> = .000
	FR	16	2.81	
	Total	354	3.64	
*Campus Bookstore (Barnes & Noble)	ED	180	4.03	
	SM	49	3.84	
	LA	91	3.74	F (5, 398)
	FA	18	3.61	= 2.92
	BU	47	3.53	<i>p</i> = .01
	FR	19	3.53	
	Total	404	3.84	

Please tell us about your level of satisfaction with the following SFA Services.				
(Very Satisfied - Very Dissatisfied; 5-1)				
	Colleges	N	Mean	F Ratio and Sig
**Career Services	SM	46	4.37	
	ED	148	4.22	
	BU	43	4.00	F (5, 336)
	LA	78	3.85	= 3.5
	FA	15	3.80	<i>p</i> = .004
	FR	12	3.75	
	Total	342	4.09	
**Students' Health Services	SM	42	4.05	
	ED	137	3.98	
	LA	75	3.57	F (5, 318)
	FA	17	3.53	= 3.24
	BU	36	3.50	<i>p</i> = .007
	FR	17	3.35	
	Total	324	3.78	
*New Student Orientation	ED	145	4.11	
	SM	42	3.98	
	BU	39	3.85	F (5, 334)
	LA	82	3.84	= 2.8
	FR	15	3.67	<i>p</i> = .02
	FA	17	3.41	
	Total	340	3.94	

5. SFA Student Perception of Knowledge/Skills Gained

As a result of studying at SFA, how much progress do you feel you have made in the following areas? (Excellent--Poor; 5-1)	Colleges	N	Mean	F Ratio and Sig
*Communication Skills - effective development, interpretation, and expression of ideas through written, oral and visual communication	ED	190	4.39	F (5, 421) = 2.93 p =.01
	SM	52	4.27	
	FA	20	4.20	
	LA	95	4.19	
	BU	51	4.08	
	FR	19	3.74	
	Total	427	4.26	
***Empirical and Quantitative Skills - the manipulation and analysis of numerical data or observable facts in informed conclusions	SM	52	4.27	F (5, 421) = 4.7 p = .000
	BU	51	4.16	
	ED	190	4.12	
	FR	19	3.84	
	LA	95	3.77	
	FA	20	3.35	
Total	427	4.01		
*Teamwork - the ability to consider different points of view and to work effectively with others to support a shared purpose or goal	SM	52	4.37	F (5, 421) = 2.75 p = .02
	ED	190	4.34	
	BU	51	4.29	
	LA	95	4.06	
	FA	20	4.05	
	FR	19	3.79	
	Total	427	4.24	
*Personal Responsibility - the ability to connect choices, actions, and consequences to ethical decision-making	ED	190	4.45	F (5, 421) = 2.48 p = .03
	SM	52	4.40	
	BU	51	4.37	
	FA	20	4.30	
	LA	95	4.14	
	FR	19	3.95	
Total	427	4.34		
**Social Responsibility - intercultural competence, knowledge of civic responsibility, and the ability to engage effectively in regional, national, and global communities	ED	190	4.33	F (5, 421) = 3.82 p = .002
	SM	52	4.31	
	BU	51	4.25	
	LA	95	4.00	
	FA	20	3.85	
	FR	19	3.63	
Total	427	4.19		
Critical Thinking Skills - creative thinking, innovation, inquiry, analysis, evaluation, and synthesis of information	BU	51	4.18	F (5, 421) = 1.37 p = .24
	ED	190	4.29	
	FA	20	4.15	
	FR	19	3.84	
	LA	95	4.09	
	SM	52	4.27	
	Total	427	4.21	

7. Open-end Question Responses:

- What were the three most important Reasons for staying at SFA?

Responses
Athletic program
Athletics
cheer
coud[sic] nt[sic] transfer[sic] due to low gpa
Could not get in anywhere else
Credits don't transfer well
Didn't have the right classes for transferring to A&M [sic]
Excellent Education Program
Excellent professors
Football
Forestry and Forestry Alone
Great and growing music program
Great Online Program
honors program
I honestly don't know I should have left when my program was closed this has been ridiculously difficult...and now I am not graduating with honors because I only have 52 hours not 54 because my 6 hours of student teaching doesn't count yet I have a 3.94 GPA....REALLY!!!!!!!!!!!!!! this is ridiculous...if my advisor did her job and stayed consistent in advising and if the online program was supported fully online with classes I wouldn't have been forced to go to another college to take some of my classes...I hold SFA responsible...support your online programs or lower the hours requirement for graduating with honors...
I love my professors
It's the place I stated and I couldn't transfer hours
My department
Nursing Program
online classes
professors
School of Social Work
SFA Dance Teams
Sigma Chi Fraternity
Sports (Baseball)
Teacher Program
The environement[sic]
there are not three reasons
To run on the cross country and track teams
too late to transfer out
Too many credits to transfer out
Tri Delta
Was pleased with the overall college
Work

- What are your plans after graduation?

Responses

Look for a job in the fall

ALT CERT for Teaching

attend physican [sic] assistant school

Continue looking for a job

Continue with the current employer at a higher position

Football

freelance

Get married.

Internship

mentor teacher

Move to DFW area

Moving to London

Not go to debtor's prison, hopefully

promotion to new job

Take the Lisc. [sic] Exam for LBSW.

travel

travel and intern

- Please add additional comments about your experience with fellow students:

Responses

Arthur Temple College is a world of its own. Hands down the best faculty on campus. Other professors do not really care, but Arthur temple professors are truly passionate about what they do

As nursing majors, we highly adhere to the academic honesty policy. Ultimately your character is what makes you.

Because I took most of my courses online, many questions regarding my fellow students are hard to answer.

Because of SFA, I have made some life long friends that will be with me the rest of my life.

Communication skills need to be addressed, especially regarding professional communication. Poor grammar, spelling, and an inability to present or elaborate on ideas were reoccurring issues. This is not acceptable for students majoring in education.

Everybody is so helpful and nice. They are always happy.

everyone was nice

friendly

From my experiences, students tend to form study groups in classes that are harder than others. Everyone that i've [sic] known participates [sic] fully in group projects. If you need help with something, students are willing to help.

Good networking and a community of people in the same major to relate to

Group work with online students is especially difficult when we've not met face-to-face. This type of activity should be limited for online students.

I am not a fan of group work because although it does prepare us for interaction in the work realm, some group members are extremely lazy and do not carry their weight. Group work should not be involved passed the sophomore level.

I didn't interact with my fellow students very much. I found them contemptible and disgusting, not worthy of attention.

I enjoyed meeting like-minded people in my major and learning about the paths they were planning to take. It helped me when I was ready to make my own plans.

I felt uncomfortable with my peers in my major. Peers in my minor were totally different, maybe it's the culture difference.

I had a great experience at SFA.

I have been blessed to learn along side [sic] the best future teachers here at SFA. I have enjoyed the friendships I have made and the support that we give each other. I have made lasting friendships in my program will people that can also be help to me professionally.

I have enjoyed attending SFASU. It is a wonderful school and it has a nice relaxed environment. I would recommend to anyone.

I have made a lot of friends and future connections!

I have made many friends who are psychology majors and we were able to take the same classes together. it's been a very beneficial experience

I have made some really great friends throughout the college years.

I have really enjoyed and learned a lot from my fellow students during online discussion and the face to face sessions.

I liked having the same people in my classes as I got into my junior and senior year.

I love my peers they are supportive and always pushing their fellow lumberjacks to excel

i love sfa

I personally didn't care for group work, but I do enjoy collaborating with other students

I would not have made it through the program without the other students.

In class HMS459 my group mrmber[sic] did not wanr[sic] to use the D21 for communicating on our assign and I did not like that. we had instruction to submit tha[sic] way. Any way we both made a bad grade.

In my majors classes, there is healthy competition between classmates. Lots of group studying and group efforts to achieve the highest grade possible.

It was difficult to build a relationship or bond with students because we were distance education students.

Lots of complaining in from radio/television majors. Lack of respect for teachers at times

Many of these kids are spoiled and it shows in their attitudes

My classmates in general often had no feedback for others. Most are very shy, and often stuck in there [sic] own worlds. Many of them we're one dimensional in there thinking and could care less about learning other skills. The teachers we're great though.

My experience with SFA has been completely online.

my fellow students at sfa sucked.

My major had a small number of students so it was easy to become friends with them because we were in the same intro class and now graduating together.

Some students are motivated but some aren't. You know the ones that are willing to go above and beyond contribute to organizations within their major. The ones that don't just give forth what they have for classes and that is all. I've noticed as well that it's the women population at SFA that attempt to do more work and contributions towards SFA than the male perspective.

Students were helpful and had positive attitudes

The average class size makes it helpful when discussing studying tips, and group work with classmates

the college of forestry and agriculture is a close nit group of students and proffessors[sic] with plenty of one on one time

The Communication Studies department is phenomenal.

the diversity of backgrounds is welcoming

The majority of the students I worked with produced quality work; however, there were also some that expected an "A" for little or no effort.

The size of the classes allowed for strong relationships between fellow students.

The students in the mass communications department do not have a big drive to do anything with their degrees. I believe this in part has to do with the fact that there are no clubs or organizations for this department. Other departments have many clubs/organizations. When I attempted to start a club, I could not get any professor to agree to support the club. They pushed it off saying that the new professor (that they did not hire) could have the responsibility of starting the club.

The writing profession[sic] is not really a team sport

There if you need help

This was an online program so most of this does not apply.

We all try to help each other because there are not many others who will.

we are like a family in the art department we all care for eachother[sic]

- Please add additional comments about your experience with faculty in your major.

Response

After changing my major several times, geography was the only one that I felt was taught properly.

Almost every professor I worked with was amazing! They really care and most are extremely organized in their course presentation.

As a music education major, these responses only apply to my music professors. I feel that my education professors could have been significantly better in all areas

Biology is definitely a challenging major and people who choose to do so really cannot mess around.

Dean Bullard is an amazing man. Dr. Hans Williams is THE best professor at SFA. I would challenge any professor on campus to the mental capacity of Jeremy Stovall and Matthew McBroom and they would completely out smart any of them. Whether its history of football or bio chem [sic] these two guy are the smartest men I've ever met.

Dr [sic] Maurer in Ag dept [sic] is a bully to students and shouldn't be allowed to teach anyone!

Dr. Lumar is amazing.

Dr. Newman, Ms. Ollie, S. Reynolds and P. Gilbert made an impact in my life and encouraged me to be the best in my profession.

Every professor that i have had has been great. One astronomy professor was very monotoned [sic] though.

Faculty in my major was god awful. I would rather burn a slow horrible death than ever sit through a class at sfa ever again.

Forest Wildlife management is a unique major in that it combine an industrial (timber) disipline[sic] with an ecological and conservation based disipline[sic] (wildlife management and conservation) forestry faculty were unhelpful. ag[sic] faculty were the best

Great and Knowledgeable professors and always there for you

Great faculty. All were very knowlegeable[sic] in their field of specialty and biology in general.

Helpful and reliable

I am a history major and the faculty in my major are hardworking and sincere! They want the best for us. Notable professors are Dr. Sandul, Dr. Carney, and Dr. Sosebee

I did not feel "challenged" enough in my major, I also do not fully feel prepared to go out in the real world and do a job pertaining to my degree.

I enjoyed getting to know the faculty in my major. I wish I had more opportunities to interact with them in face-to-face classes, as many of my major classes were only offered online. I enjoyed learning from them, though, and having the opportunity to talk with them about projects, assignments, concepts, and future aspirations.

I feel like teachers within my major are excellent but the teachers within the Ag department as a whole are not.

I found the head of my department[sic] rude and unfriendly on many occasions, she was routinely[sic] unapproachable[sic] and uncaring.

I have been charged for on campus fees and I am fully online.....I am not graduating with honors when I have worked VERY hard and have a 3.94 GPA because I was forced to take a third science with a lab which resulting in me having to take it at a local college...my peers were allowed to take their third science with NO lab allowing them to take a science online at SFA.....with those Science hours at SFA I would have graduated with honors and the worst part is that I found out I wasn't graduating with honors WEEKS before graduation....

i love health science

I loved all of the faculty, they are so passionate about their work which is encouraging.

I loved my faculty however, i could tell that they have a lot on their plate due to the overwhelming class sizes. No matter how many students they have in their classes our Professors are willing to help us any way they can. However the health science department NEEDS MORE PROFESSORS! The health science department is going and so should its staff!

I really like the faculty because they challenged us but also taught us what we need to know and shared their experiences with us. They were also willing to help us even if they were not our teacher that semester.

Most of the faculty in my major were very kind and respectful as well as caring. However, there is always that one professor that seems to stand out and not be that way.

Nursing faculty are very knowledgeable about the nursing profession and provide different projects to enhance the learning experience.

Of course there are exceptions, but as a whole, the faculty at SFA are disinterested in students, and care only about their own meaningless research, vying for a tenured position.

only one no compassion or off to make up work better within limits

Several faculty members were strong standouts for me - Paula Griffin, Sudan Barber, Elizabeth Kelly, Larry Cupit, Dr. Sowards, and Tefanie Erwin. I really worked for my grades with these professors and felt they were asking for my best efforts. I appreciate their dedication to my instruction and my future career.

The care that the professors have for their students is the reason why I stayed at this school.

The Elementary Education program was phenomenal. Most professors were outstanding. I could not imagine a better experience than I had going through the Elementary Ed program.

The faculty at SFA are like no other[sic] college faculty. They really are there for the students.

The faculty did not believe in embracing the technology of the profession. For mass communication and journalism, many of the career choices must have a knowledge of the internet, social media, and its place in the mass communication world. Not one professor wanted to teach that. Dr. Mayer taught the Public Relations class and does not believe in technology at all. You cannot teach PR without social media. Social media is PR these days. The mass communications department had no interest in helping us search for a career after college. The Human Sciences Department (my minor) talked about job opportunities all the time. They set up interviews for students constantly. Not once did any of my professors do any work to help mass communications majors prepare for a career. The professors did not seem to care about students, only their books being published. In many of my classes, I got A's because of my knowledge I already had about journalism/PR. Pat Spence is the only teacher who actually taught us. I feel like Bond and Mayer, although they are nice, did not prepare me for the real world or for any part of the journalism field.

The faculty in my major are great! They don't have to be your advisor nor your professor to give you advice and aid you to the future. They are a great group of staff and I'm more than honored to have met them either by having classes with them or seeing them in the hallway.

The faculty is very helpful and understanding.

The faculty is very knowledgeable[sic], smart, and always willing to help. They have student's success and well-being as a priority.

The faculty is very personable and easy to approach.

The faculty really care about your success and willing to help in anyway they can to fully comprehend the material.

The instructors are the best I've ever had.

The instructors for the education department were all very supportive and took great care to make sure their material was stimulating and up to date. However, the Dean of the College of Education was unhelpful and in some cases even rude when asked for help on a particular issue.

The only issue I had with the department faculty was advising, which cost me an extra semester.

the professor of my major with a knowledgeable about everything that was going on and what classes I need in order to graduate

The Sociology department is great! I loved working with these professors in particular: Dr. Szafran, Dr. Cecil, & Dr. Segady. My advisor Dr. Darville was very helpful. Peggy Moss is the most amazingly sweet and helpful Admin Assistant on campus. She completely deserves a raise for being such a pleasure to interact with. Dr. Segady is the best professor at SFA, he is the reason I majored in Sociology. His passion for his profession really comes across in his lectures. Dr. Cecil is very entertaining and completely relatable to the students. She has great real life experiences to share and it helps to get the information to really sink in. Dr. Szafran is super nice, I didn't do as well as I would have liked in his courses but overall just a really great professor. I would also like to note that the anthropology department has a great staff and they do an amazing job. Overall my experience with both departments was fantastic! I chose a great major for my temperament I just wish the job opportunities were more plentiful.

There are some professors in the accounting department that really try to stimulate creative thinking and encourage students to think for themselves, like Marsh, Noe, Bunn & Ethridge. However, there are other professors that take the easy way out and don't [sic] teach, instead they tell stories all day. I use to take lots of pride in our dept[sic], but professors need to understand that by not teaching, they are only hurting the program.

They are easy to talk to and very supportive!

They are not qualified to help advise you about which classes to take or what is required of you by the university.

With the exception of Dr. King, most professors in the music department pick favorites and over look [sic] others who also work hard and have talent.

You will always have at least 1 difficult professor each semester. I hope they were there for some life lesson to be learned later.

- Please add additional comments about SFA services:

Response

Being a student who came to this school without any friends, professors did not mention or push me to join any groups or organizations. I came in this alone and am leaving alone. All I enjoyed was what I learned. I wish I could have been more involved than receiving ugly looks from people when I asked about what an organization was. I wanted to be apart of a group but coming to SFA after already attending a two year college didn't really give me a head start. Some of the Sororities such as tri-delt [sic] and tkos[sic] need a little bit of attitude adjustments. I have never seen Greek organizations act in a manner that these two did the two years I have been here.. [sic] Staff at SFA was amazing. I loved working with the staff in the development office and the rest of the staff I met. I think there are some profesors [sic] that do push and make organizations a success but I think more professors should be encouraged to get students into organizations so students like me, who came here not knowing anybody, can be a part of something.

Addign [sic] the additonal [sic] fees on for recreation use for online students is out ragious[sic] and the parking for commuters is HORRIBLE... residents park in commuter parking and leave commuters with no parking!

As a commuter student I found parking to be very difficult. I had an issue with not being able to find a parking spot and I had a parking pass for the day. When I parked in a lot that was empty since the lot for commuters was full, I received a ticket. I appealed the ticket but lost. I felt this was an opportunity for

SFA to make money not a service to students.

As an online completer, I did not use many of SFA's services. However, when coming into town for quarterly meet-ups, parking was difficult and could be pricey. Parking around the on-campus research center/elementary school was extremely limited.

As an online only student, I felt like a second-class student who paid for services used only by on campus students. I don't mind paying for things I use, but I don't appreciate having to pay for things I don't use.

Axe 'em!

Financial aid needs financial aid counselors who actually care about getting students their money. Every semester, I had to fight with financial aid to get the money to attend school here. I know they are holding money from us because I called this semester asking them if there was any way I could get any more money because I could not afford college. All of a sudden, they had an additional \$500 in a grant for me. I did not have to apply or anything. That means they have the money but will not use it. Why? I wish I knew. Career services is a joke. Unfortunately, they do not help you at all prepare for jobs. They do not have any actual job postings, and the career fairs do not have very good options in them. Unless you are a teacher or an accounting major, you are sadly out of luck. I feel like SFA has so much potential, but no one cares to try to get this school up to par. If you didn't want to go greek, [sic] there were no options available for clubs or organizations.

fix them

Great school in a great town. Needs a few improvements but what school doesn't? I am a proud Lumberjack!

Great school of nursing experience and program! I would highly recommend this program for future students.

Housing really needs to be improved. I lived and Todd and couldn't wait to get out. I was pleased with the vegetarian options in the cafeterias though! Needs to be more commuter parking ON CAMPUS. Update the science building, too. It is just so old.

I am very dissatisfied that there are more junk food choice than there are healthy, wholesome food choices. Also, I hate riding the elevator in the Library to get to the second floor or really any floor because people mess around or cant[sic] make up their minds and the machine takes too long. Plus, I hate the fact that the whole place isn't monitored very well, there are some good books ruined by pizza grease and that's another rule that needs to be thrown out, the one allowing people to bring food into the facility. And the noise in the Library is appalling! I have had no interest in studying in the Library since my freshmen year.

I could probably consider Dr. Darville, my academic advisor, my best friend throughout my time at SFA. He, as well as Bobby Williams in the business office, both went out of their way for me many, many times.

I enjoyed my educational experience at SFA.

I have always had great experiences with the SFA services that i have used.

I have been thrilled with my SFA experience.

I liked SFA, but i have been unhappy with a lot about it.

I love SFA

I love SFA but the parking situation is horrible!!

i love their services

I love this school and am sad to leave.

I saw 7 advisors in my time with SFA before we got a dedicated advisor who was wonderful, I did feel that this was very unhelpful in obtaining my degree and found that it set me back by taking several classes I did not need to take and not having reliable information about my degree plan.

I was an online student so I did not use many of the services provided for on campus students.

I was pleased with most services. However, I was disappointed with veteran services. I would have been qualified to have veteran services under the hazelwood [sic] legacy act, but it was under the university discretion that I was denied. Also, I have been informed by other college financial aid representatives that students can have extensions for pell [sic] grants, but this was also under university discretion which I was denied. I almost was unable to complete my degree, but I was awarded a much needed scholarship.

I was somewhat displeased with Academic Advising because several times I was told that I needed to add classes that I should have taken when i first arrived at SFA, but I was left to take these classes in my sophomore semester. I just wish there was better Academic Advising upfront.

IF SFA truly cared about their students someone would contact me and discuss the issues I have had...the department of Education truly does not care....I am so thankful I will be graduating in a week and done with this school. I have a daughter who is a Senior in High School and I would NEVER allow her to consider SFA even on campus because of all of the problems in my 2 years with SFA. When friends mention it I make sure to let them know the problems I have had especially if they consider Education. Sure some things were taken care of and others not...the most important thing was for me to graduate with honors...to receive an email a couple of weeks prior to graduation letting me know I am not graduating with honors because I only have 52 quality hours not 54 even though I am in a 6 hour class that is pass/no pass and the science class as I mentioned prior was not an option at SFA because for some reason I was forced to take a third science lab...that was out of my control...someone needs to have the advising more consistent and if SFA is going to offer a full online program all of the classes the final 2 years needs to be offered by SFA online and when the student has to take them i.e. timing for the degree plan.

It was a nightmare dealing with Higher One... The financial aid system was better when SFA took care of it on their own.

It would be nice if the library were open for later hours. Midnight is too early for me!

It's been a pleasure!

Loved my time here.

Many faculty and staff in the Financial Aid and business office tend to be rude and very disrespectful to students and unwilling to help. Often times they deny students full access of resources to help them.

More Parking for commuter students. The academic advisors need to be professors WITHIN your major. They actually know the courses and when they will be offered. There were few within my major who had any help from the advising center. We were assigned an advisor there, and still went to our professors for help and advice.

My general feeling about services available on campus is that the university cares more about their money than they care about the students

My only issue with parking is that it was oftentimes hard to find places to park in the garages -- the bus system took a good amount of time, making it necessary to arrive at school earlier than was needed. Also, as I am graduating in December, I am pretty bummed about the fact that parking permits are offered only on a year basis. I bought the pass -- which is overpriced, in my opinion -- and am only using it for half a year. I wish there was an option to buy a pass for a semester, so we wouldn't have to pay more than was necessary.

None at this time

online [sic] tech support is great foe online students.

over [sic] all this school provide good services. Although the parking situation is not the best.

Overall experience at SFA I give it a B-

Overall I wouldn't change my experience with the services here

Parking is a disaster

Parking is a joke. The fines are ridiculous. Faculty staff might as well be the only people allowed to park near a building on campus. When looking for a parking spot as a commuter, or even when I was a student, I would pass dozens of available spots but I couldn't park there because they were faculty staff. I appreciate the faculty staff and believe they deserve good parking, but why can't students park behind hall 16? I know parking has and most likely will always be an issue, but the faculty to student ratio is not proportional to parking. I know forking fines are just another way for SFA to get students money and to enforce the parking rules, but at the end of the day, the students are not happy. Lucky for me, I figured out a way to beat the system for the last 2 years. I'll keep that as a secret to pass on to other deserving students

Parking is a nightmare and the campus police go out of their way to collect MORE money from students by handing out parking tickets. Not a fan in the least.

parking needs to be better but im[sic] pretty sure you already know that

Parking services is awful for students. I always leave a minimum of 30 minutes from home when I live 3 miles away from campus and still have trouble finding spots. Even when I park at the commuter lot and I'm there early the jack track is terrible. I preferred the old commuter bus because at least I knew I could get to class on time. It's ridiculous that I have to wait sometimes 15min in the rain with no umbrella for two bus that are not in a synchronized schedule. Not to mention that getting to class has taken longer due to frequent stops. I'm also very displeased that that students have to share garages with faculty because every time I'm on campus there seems[sic] to be plenty of faculty spaces available while students are suffering everyday with what they have. Not to mention the fact that if you want to use a spot that is by the Wilson Garage and the Landing you have to pay! That is absurd that students not only have to pay more for parking but to park on spots by a garage you have to pay extra is ridiculous. I know it generates income for the school but the students do that already and trying to squeeze every penny from that is just wrong.

SFA does a pretty decent job overall, but I would like to make a couple suggestions. The people who ride bikes on campus are a hazard to people walking. There needs to be a bike lane in the high traffic areas on campus or students shouldn't be allowed to ride their bikes in those areas. If we could put in a sidewalk just for bikes or paint areas/lanes on the concrete just for bikes that would be great. I would also like to suggest that the library clean the computers more often. Those computers are absolutely disgusting. It is also very hard to do homework in the computer lab because it is so loud. There are always students in there listening to music blasting through their headphones. They are also always talking loudly about things unrelated to class work. I could understand the chat if it had to do with a group project assignment or studying. I know the computer lab isn't[sic] a quiet zone but it would be nice if it was a minimal conversation zone. The Business Office also needs to be more available to students, calling the Business Office is an ordeal since they don't have very many people answering the phones. In general I feel that SFA is a great campus. .

SFA has great service with a smile.

SFA services are very helpful!

SFA services provide the best quality and take the time to listen to the student.

SFA services were helpful

SFA services were very helpful.

Stop hiring ex convicts[sic] to run campus food. It's a disgrace to the college to see full sleeve tattoos and have to learn Ebonics. For having the top forestry and ag [sic] program in the state it's a disgrace to see the work our grounds crew does. Listen to the professional DOCTORS you hire. Parking on campus and east college is ridiculous. Fix the road already. I loved my time at SFA but only because of Arthur Temple. To have a program like Sylvans that consistently represents our school with 1,2, or 3rd place every year it's ridiculous that members still pay for their own fuel across the country. Heaven forbid students spend THEIR whole spring break bringing home a trophy for SFA and have to pay for it out of pocket. I am not writin[sic] this to bitch but in hopes that someone will realize that Forestry is the highest respected major on campus with nursing and education. Where is any new addition to the forestry building? Where is any strive to show new students how badass the program is here. I am more proud of Arthur temple than I am of SFA and I believe that future students shouldn't have to feel this way. Baker patillo [sic] should be

proud of the forestry department and I don't see it. I will bleed purple for life and say all this to better the school as a whole

The BEST School of NURSING EVER. Very proud to be a lumberjack nurse!

The campus has great customer service and I am proud to have been part of excellence.

The Counseling Center saved my life.

The dining services are bad, not just the cafeteria. The hours for other services are at times, very inconvenient. There's too much staff and faculty parking that's barely used and not enough for students.

Professors were at times pushy about their beliefs.

The Faculty at Arthur Temple College of Forestry and Agriculture are awesome and they make you feel at home if you work hard in your classes and respect them.

The majority of SFA services were extraordinary. However, parking is a huge issue! There are too many students and not enough parking!

The only thing I have to complain about is the commuter parking. The permit costs \$100 and the nearest parking available for me is in the pecan park parking lot or the CVS parking lot. There are absolutely no parking spaces available for commuters in the parking garages or on campus. More emphasis should be placed on commuter parking availability because we spend too much money on a permit that does not give us any kind of advantage.

The parking garages are wonderful, but students rarely get to use them bc faculty use them and we are left with the commuter lots while the entire faculty parking lot is vacant! It's so frustrating!!

The past two years has been great at SFA. My only regret is that I live too far from campus to use any of the amenities. Overall SFA has been a great experience[sic].

The policy regarding tuition[sic] increase for students with excess hours MUST be reexamined. It is absolutely ridiculous that my tuition was that much just because I had excess hours!! Also, this policy should not have applied to me because I started school before this policy was made.

the school was great i am going to miss it

The services at SFA were far from adequate. The buses were continually late, I had to wait months to hear anything important regarding my graduation, I WAS PREVENTED FROM GRADUATING ON TIME THE FIRST TIME THROUGH, I was lied to about the availability of jobs once I graduated the first time. I felt robbed of my tuition every semester.

the staffing for the various eateries were well mannered and respectful

There is not enough parking for students. The ECRC is ridiculous[sic]. Staff get have the parking lot when they only take up 1/4 of it..

There needs to be better advising. Many students graduate late or take the wrong classes because of this. HUGE issue. Also helping those students not in education or nursing transition from undergraduate school into a career path would be nice. You give us an education but after but don't teach us anything about what to do or expect after college.

There needs to be more parking on campus. The library should be open 24 hours a day.

there needs to be more student parking

There needs to more parking space and the need to come more frequently. The quiet zone in the library are noisy they need to have someone regulate those areas. It is difficult for student who come from abroad to intern with companies before entering [sic] graduates [sic] school, most companies that show up for career fair do not accept.

This school needs to work on improving all the facilities and to work to build a new cafeteria and to not allow students in this school who are not prepared for college you are making our school worse!

This semester I was charged excessive tuition. I was told by the business office that all I needed to do was send a letter from my advisor with my appeal to not be charged excessive tuition rates. However, my appeal was denied! I am now in an extreme circumstance financially because of being lied to on what I needed to do so as not to be charged excessive tuition. This has caused emotional stress and suffering in to my family.

Within my major, I was very satisfied with my experience [sic] at SFA. But as a whole, I felt like I was overpaying for the entire campus experience[sic]. Each year I was enrolled, it seemed as if there were more and more ignorant people around campus. This is very discouraging from a students [sic] standpoint who has worked very hard, has a 3.5 throughout[sic] graduate school and already has a job lined up at a CPA firm. In my opinion, the school needs to stricтен[sic] the admission requirements and to also do a better job on parking. The parking garage on Wilson should go back to 3 floors for comuter[sic] students and the short term paid parking lot is a joke becuase[sic] it is only there for the school to get extra money from students.

Wonderful job

Would prefer talking to people instead of having to email them all the time.

You guys did good wurrk[sic]

Your eBill online updates slowly and should not spit transations[sic] during charges. It confuses the payment process.

- How did your campus involvement enhance your overall SFA experience?

Response

I wasn't on campus much, unless my organization was there, but when I did go with my organization we met great people and created relationships that we might not of made otherwise. It is important to get involved on your campus. I missed out on a lot before my organization brought me on campus.

-online student-

allowed me be prepared for the overall business world

Allowed me to gain friends

Allowed me to not only learn the SFA campus, but the city of Nacogdoches as well

Becoming involved was hands down one of the best things that I have ever done here at SFASU!

Being greek really enhanced my SFA experience. It gave me a plave[sic] to call home with people that I love dearly. The girls I was surrounded [sic] with encouraged me personally and academically.

Being involved help me meet alot [sic] of other students who were interested in similar things.

Campus involvement enhanced my SFA experience keeping me involved and busy

Campus involvement helped me to maintain a good GPA and develop friendships with people who had common goals.

Campus involvement made SFA a great place to go to school.

Campus involvement really improved my overall SFA experience by helping me to meet new people. connections made for future endeavors

Distant learner.

Gave me a sense of community

gave me something to do besides party.

Good

Good learning experience

Good networking and involvement

Great part of the growth process

Greek Life

helped me be more soical[sic]

Helped me make new friends.

Helped me meet new people

Helped me realize I love working with kids.

Helped me study and learn better

Helped me to meet people.

Helped prepare me for what is to come next.

Helped raise my GPA

Helped to get more involved and meet others.

I am a non-traditional student and was unable to be involved in many campus activities.

I didn't have campus involvement

I enjoyed being in both ODK and Driving Jacks. It gave me something to do outside of studying.

I enjoyed the environment and the students, it wasn't like a normal university with 30,000 students and I prefer that.

I got involved with ODK for my last two semesters. I wish I'd been more aware of all the organizations on campus earlier. I really enjoyed my time with ODK

I got to interact with a variety of people and organizations, making new friends and associates.

I just felt more involved with the campus. it was nice.

I love campus. I wish the nursing building was located on campus. My last two years at SFA (nursing school) I felt almost as if I did not go to SFA. The nursing building is wonderful...I just wish it was on actual campus or closer (walking distance) to it.

i loved the activities

I loved the development department

I made connections with people I would not have otherwise met.

I made my experience a change of a lifetime.

I meet new people

I participated in intramural sports which allowed me to meet more people and make new friends.

I transferred into SFA for my last two years so I did not have much campus involvement

I was a distance education/online student.

I was a studnet athlete and did not have much time for any other than school and sports.

I was able to work with peers and professional staff. It also made me feel more connected with the university.

I was heavily involved on campus throughout my time at SFA. Being involved helped me gain knowledge that will help in the real world. Some knowledge and skills that I would not have learned other wise

I was in greek life at SFA. It was a fucking joke. The only involvement I wanted on campus was getting the hell out of niggadoches[sic].

I was not involved in campus activities but my SFA experience was great.

I was not very involved on campus

I was too busy with work.

I was unable to very much campus involvement due to being a single, working mother.

I wasn't really involved in amps organizations.

I wasn't very involved in campus activities. I wish I would have participated more, but I needed to work and study for classes. The involvement I did have was pleasant and I am glad I did the things I did.

if I would have had time to be more involved I would have been

In a very effective way

Increased network

Involvement allowed for connection to more people leading to more positive experiences and activities.

Involvement enhanced my SFA experience because it gave me a chance to represent my school besides being a number. It also gave me a chance to know my professors outside of the classroom and have connections that will last beyond SFA. I also had the chance to experience so many things that I wouldn't have done not being involved.

It allowed me the chance to get involved in more community service

It allowed me to meet my online classmates.

It allowed me to serve others and help meet needs.

It built a stronger relationship with the campus and Nacogdoches community as a whole.

It completely changed by experience for the better. I made great, great friends and became the president of the org. that i was involved in. We have grown so much over the 2 years as president. MLK Day of Service and The Big Event were both great programs that i participated in. RHA also put on some great programs too. SAA keeps doing great things to get everyone involved. It's been awesome.

It did not enhance my experience in any way.

It did raise a sense of pride about being a lumberjack.

it didn't

it gave me a good ideal of what the teaching field was all about

It got me involved with people outside of my major

It has been a great experience throughout these four years, and being involved is what kept me busy through the semester and applying time management to be on top of my school work as well.

It helped in the social department

It helped it.

It helped me becoming familiar[sic] with others and the campus/community.

It helped me feel that if I needed help there was always resources around for me.

It is what kept me at SFA with out the community college students would go crazy. Nacogdoches doesn't have much to offer so most of the social interactions, recreation, and fun comes from the campus.

It made being on campus fun and not boring.

It made it a more fulling[sic] experience with the different projects.

It made it better.

it made it so much better

It made it worse.

It made me more comfortable with other professors.

It made me more knowledgeable and aware of school traditions, customs and introduced me to more people round the town.

It made my experience personal here at SFA and was a huge reason for my desire to stay

It made school much more enjoyable

It provided opportunities to step out into the world for hands-on experience.

It taught me how to be social in any environment

It taught me leadership skills and prepared me for my future career.

It teaches me a lot

It was fun and I learned alot[sic].

It was good.

it was more important than the curriculum.

It was the main reason I stayed at SFA

learn team working skills

Made it better!

Made me love it even more

made me more friendly

Made me stay at SFA

makes you fell more at home.

My campus involvement allowed me to meet a variety of people and make lots of new friends. I grew professionally by developing leadership and communication skills.

My campus involvement helped me to grow as a future teacher.

My campus involvement made my entire SFA experience memorable and fun!

My campus involvement was my SFA experience. It made me the kind of worker and student I am.

My campus involvement [sic] was wha [sic] made my experience[sic] with SFA great

Not applicable...I am an online student.

Online Student, N/A

Participating in on-campus research with faculty and staff provided information regarding the city of Nacogdoches as a whole[sic]

SFA was no help at all getting my internships. I found them myself and did all the work to get them. Even when I went for advice, they were no help.

Small campus made it easy to get around.

Taught me how to be social.

There is no other time in life other than college when you get the kind of community you get in college.

My community at SFA was excellent and a huge part of me loving it and growing here.

This is not really applicable to me as an online completer living 4 hours away.

Traditions council needs a complete overhaul, Amanda Horne is outstanding in Greek life

You care more about things when they are important to you. Being involved makes things more important to you, because it's your work. Also it becomes more enjoyable because you meet more people to share your life with.

- Please add additional comments on the areas of study at SFA that need further improvement.

Response

Again, because I took most of my courses online, it is hard to answer some of these questions.

Communication skills for education majors are a must, especially professional communication.

Every area needs improvement, from hiring professors who don't humiliate their students, to actually using brain cells to get programs here that work. I visited tutoring centers exactly three times, none of the "tutors" were able to even comprehend what I was trying to do, much less help me understand it. These people are paid to be there? Waste of money.

good

I am not sure what SFA could do differently.

I have grown as a person while studying at your School of Nursing.

I think being involved in organizations and SFA in general, i have learned so much and have grown so much. I think encouraging students to volunteer more and give back, to stand up to oppression by encouraging students to say something if they see bullying, etc. A lot of programs help this, but encouraging it can only do good things.

I think critical thinking skills and social responsibility are both very important and can never be improved [sic]upon enough. The society we live in needs constant help with those two areas and I think more time and effort can always be spent there.

I was in the secondary education program... We need to be able to take the PPR before we student teach, I had to take 4 certification test while student teaching.

I'm fifty seven and I started to school, learning the tecnology [sic]was a turning point for me with no skills on the computer. I don't know I'm from the old school comming [sic]into the new school.

more multicultural training and exposure for staff and faculty because this university does not have one type of student.

Much of this would be swayed by my online experiece [sic]. I thought our peer interaction was satisfactory and wouldn't mind more, but don't feel that it is necessary.

My personal responsibility skills and social responsibility skills were taught to me by my family. No school can teach that; It starts at home with discipline.

personal responsibility within students. Some students get too accustomed to professors "babying" them, when they reach exit courses, they complain about the course load and assignments and blame the professors. But in actuality, they just need to take the responsibility[sic] of studying the material.

Professors encouragement to students to join organizations. Extra credit etc.

Seriously SFA was easier than highschool[sic].

soils is made too hard. forestry professors choose favorites

The Nursing department needs improvement with its admissions. It is too competitive for people to get in and the percentage of students who leave the nursing school after being admitted is way too high. There needs to be a better screening process and another way to help those students who are applying to fulfill the requirements to get admitted.

The Staff that work in the parking and traffic department need to be fired. Very rude. Especially Ms. Wilcox.

The whole communications department needs a makeover.

There should be classes that teach you actual important life skills. Basic skills such as taxes, making a budget, write a resume, deal with loans and interest, and other average person life skills.

This is less thanks to sfa and more thanks to my own maturity.

Top 15 Ducks Unlimited chapters in the national and all I hear about is SAA. Kyle Turner wins nationals for SFA bass team and doesn't make the paper? Instead we focus on marijuana arrests on campus and have officers that chase ducks around the ag pond at night because they are bored.
